



Comprehensive River Management Plan

Spring 2011

Wild & Scenic

Snake River Headwaters

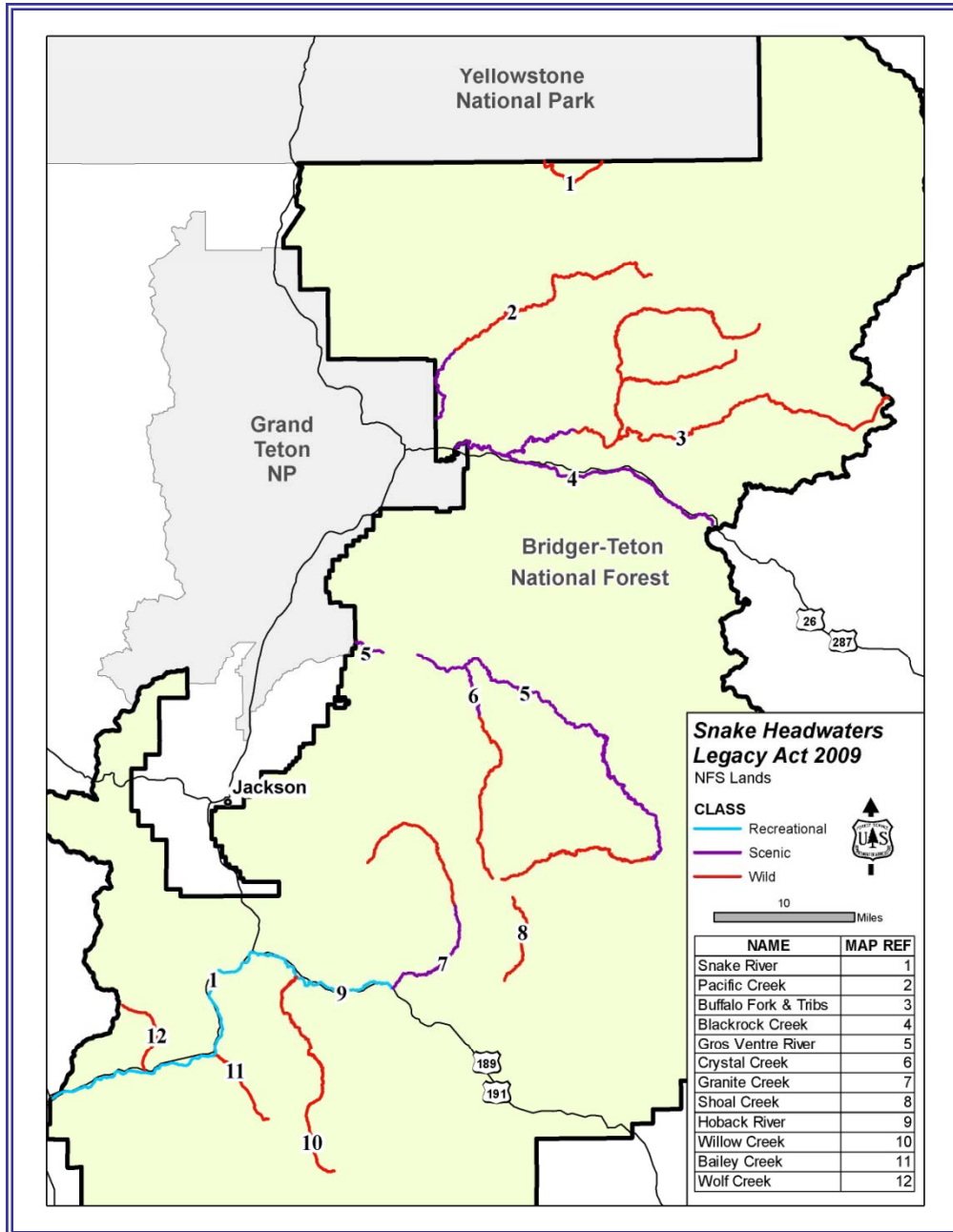


Craig Thomas Snake Headwaters Legacy Act of 2009

To protect for current and future generations ... the outstandingly remarkable scenic, natural, wildlife, fishery, recreational, scientific, historic, and ecological values of the rivers and streams of the headwaters of the Snake River System, while continuing to deliver water and operate and maintain valuable irrigation water infrastructure.”



Bridger-Teton National Forest



BTNF designated rivers

Snake River Headwaters includes YNP/GTNP/NER.



Water Rights

Prior to designation

- Water rights allowed
- Access to point of diversion allowed
- Maintenance allowed
- Moving point of diversion allowed
- Filing new water rights allowed

After designation

- Current water rights protected
- Access to point of diversion allowed
- Maintenance allowed
- Moving point of diversion allowed
- New water rights allowed
- Priority date for WSR rights March 2009

Outstandingly Remarkable Values

River Segment	Scenery	Recreation	Cultural	Ecological and Wildlife	Fisheries	Geologic
Bailey Creek	*	*		*	*	*
Blackrock Creek	*	*	*	*	*	
Buffalo Fork (wild)	*	*	*	*	*	*
Buffalo Fork (scenic)	*	*		*	*	*

Classification vs. Outstanding Value

**Determined by
development levels
at time of designation**

Wild river areas:

free of impoundments, no roads,
watersheds primitive

Scenic river areas:

free of impoundments, shores
undeveloped, but accessible
in places by roads

Recreational river areas:

readily accessible by road, some
development, may have had
some past impoundment or
diversion

Outstanding Values Include :

Scenery: visual attributes to
protect, viewsheds as seen from
rivers and from roadsides/trails

Recreation: settings and
experiences enjoyed by visitors

Both are aspects of some
segments that management must
work to protect and enhance.



Bridger-Teton National Forest



Buffalo Fork, scenic section



Outstandingly Remarkable Values



- Draft report to public November 2010.
- Public meetings and online input solicited.
- Revised report released February 2011, incorporating public feedback and professional knowledge.



Existing Land Uses

- Patterns of use at time of designation can help establish limits for acceptable land use changes.



Non-Federal Lands



- CRMP standards and actions apply to *federally-assisted water projects only*: Section 7 reviews of bed/banks proposals.
- Additional protection relies on *voluntary cooperation* of state/local governments, landowners, and river organizations.

Corridor Boundaries

- **No more than 320 acres per mile (average)**
- **1/4 mile from high water line is default**
- **Set to include special features (ORVs)**
- **Generally include private lands wherever river values (ORVs) exist**

Potential Benefits for non-federal landowners:

- **Ability to receive federal funding for riverside enhancements**
- **Tax incentives for conservation easements**
- **Greater ability to sell property to federal government or land trusts**



Next Steps

BTNF Land and Resource Management Plan



Amendment 2 → 1992

set up temporary standards
after eligibility determination

Fall 2011 Proposed action for
formal analysis and public review
(NEPA): will create detailed
standards by segment
→ new Forest Plan Amendment
Finalize CRMP

Questions to be considered in planning process

- What are the most appropriate uses along each river segment?
- What are the most appropriate natural and cultural resource management strategies within the corridor?
- What are the implications of various management approaches in terms of visitor capacity?
- How can land managers protect the unique character of areas designated in this system?
- What specified values require a minimum amount of flow to be sustained?



Upcoming Efforts

Online questionnaire will inform options.

Invite us to your meetings.

Planners will draft proposed action for formal scoping.

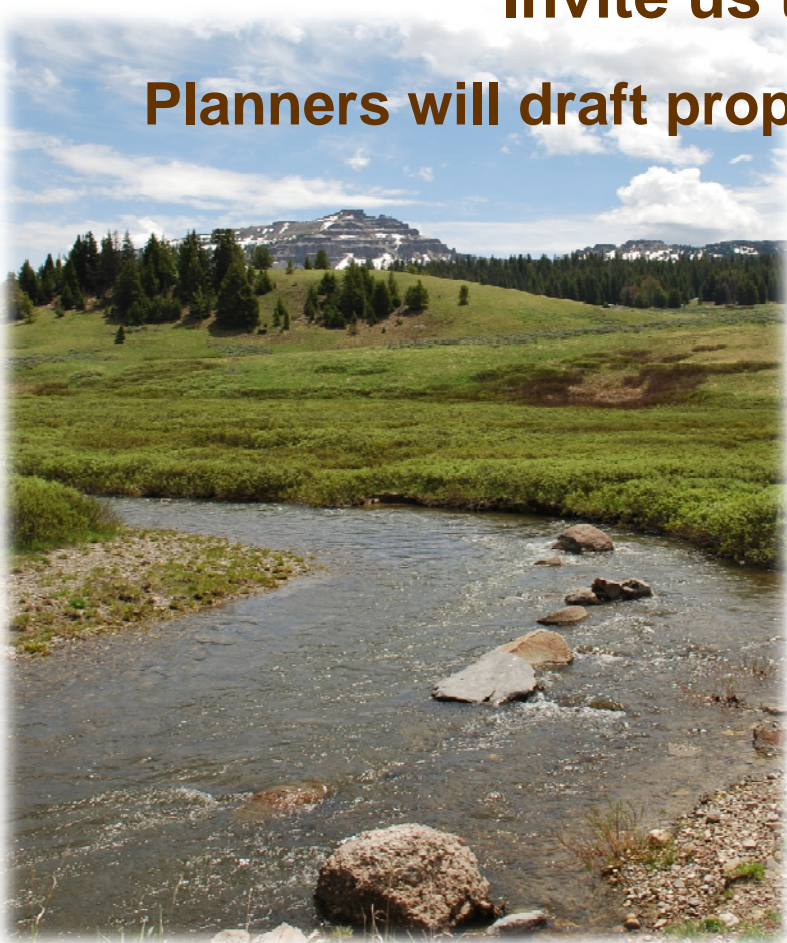
- Newsletter Vol. 3 Summer
- Sign up for Email updates

www.SnakeHeadwatersAct.com

www.fs.usda.gov/btnf

swoods@fs.fed.us

886-1274



Our Vision

The Bridger-Teton National Forest is home to world-class headwaters, wildlife, wilderness and wildlands. Conserving these values, in concert with providing for sustainable uses, is our legacy. We are leaders committed to service, action, and excellence.

