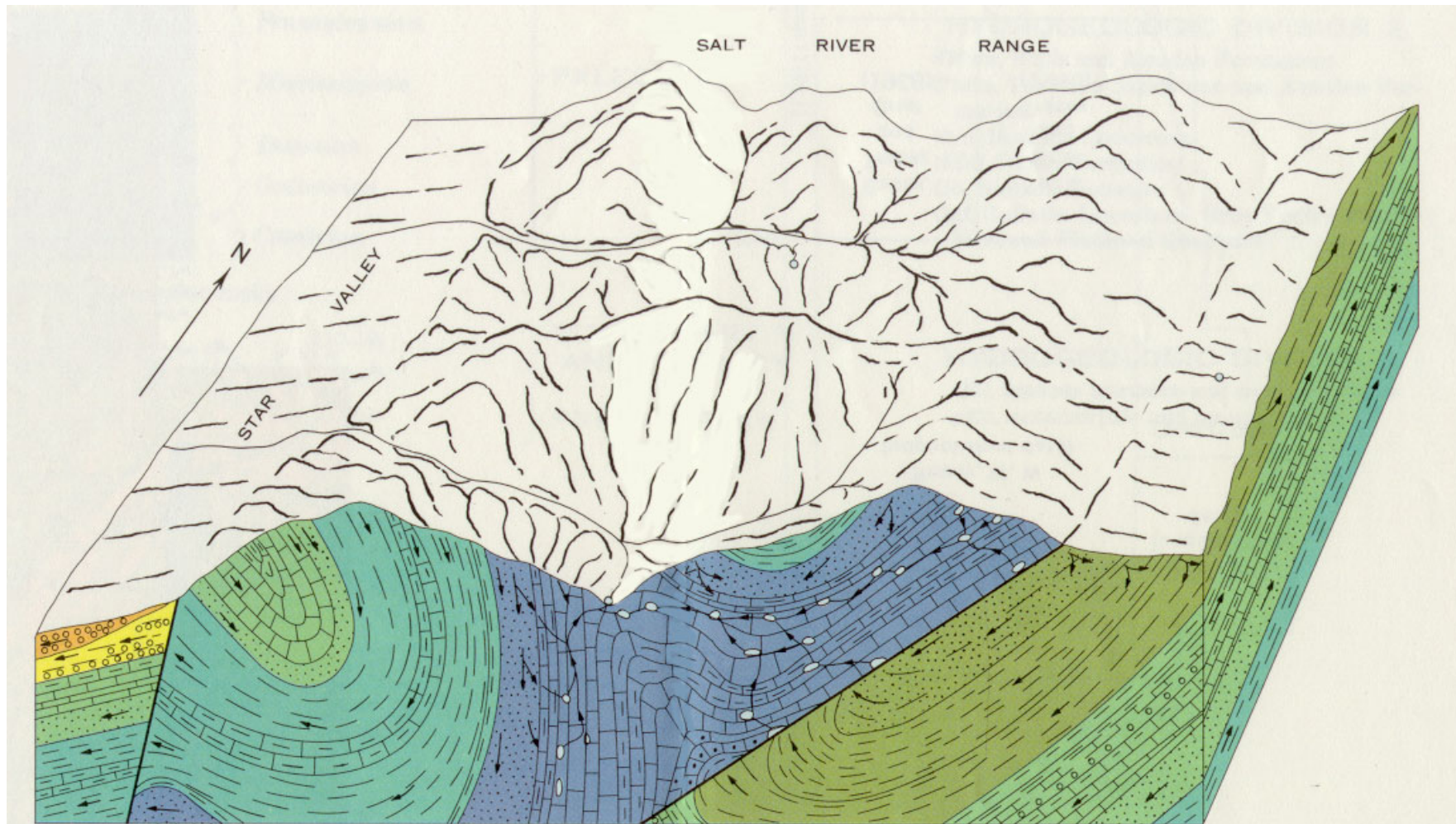


Schematic Groundwater Circulation - Salt River Range (from Lines & Glass, 1975)



Not to scale

Generalized block diagram of part of the Salt River Range and Star Valley with arrows showing the inferred movement of ground water. Note the interbasin movement of ground water, the draining of rocks that overlie Paleozoic limestones or that have been butted against the limestones along thrust fault, and the concentration of flow through solution openings in the vicinity of spring.