



# Upper Laramie River and Middle North Platte – Glendo Watershed Studies

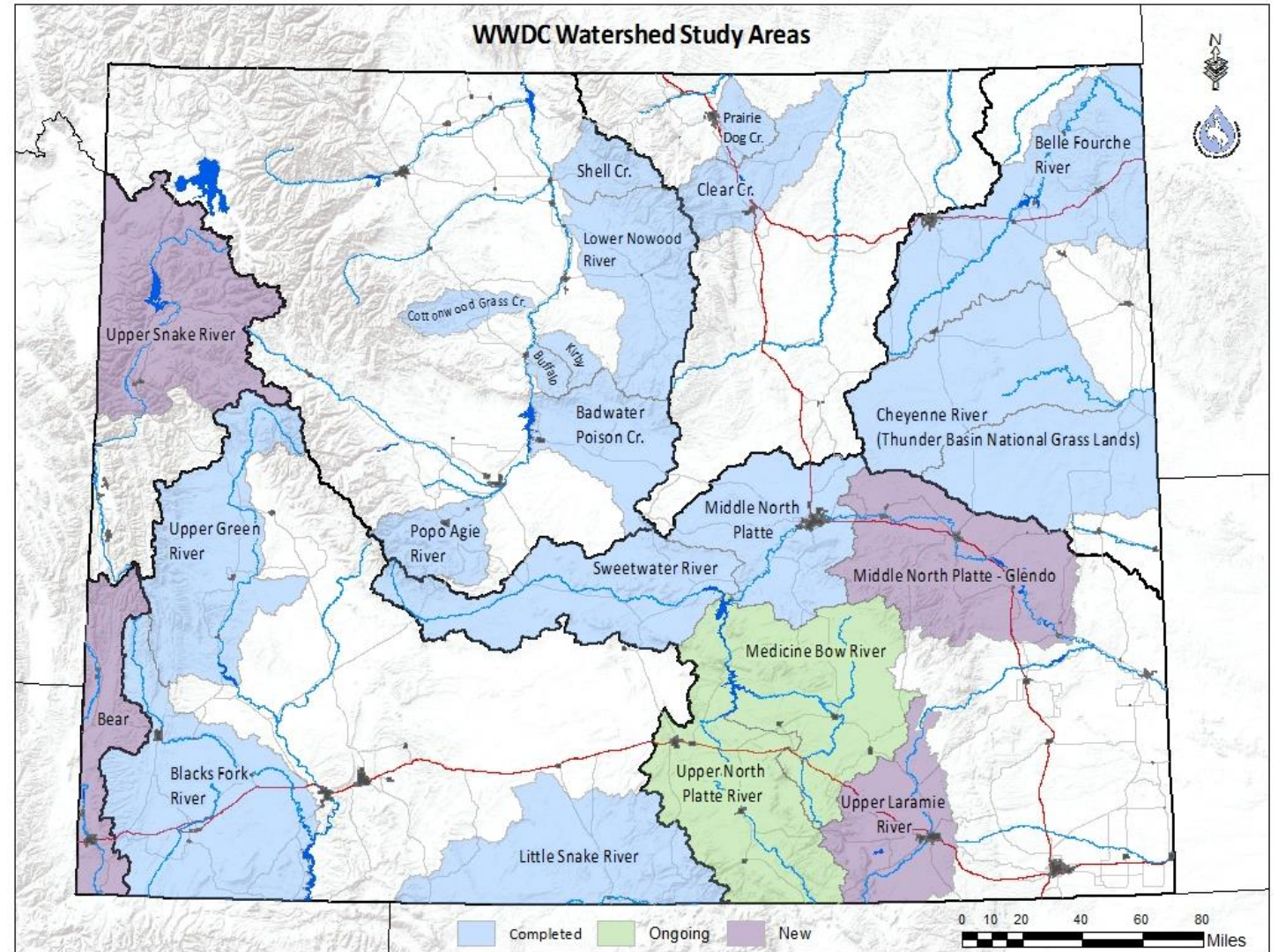
JODIE PAVLICA AND TONY RUTHERFORD

# Presentation Outline

- ▶ Statewide Look
- ▶ Upper Laramie River
- ▶ Middle North Platte – Glendo
- ▶ Small Water Project Program
- ▶ Contact Information

# WWDC Watershed Studies

New, Ongoing, and Completed Watershed Studies



# Upper Laramie River Watershed

Includes: Wheatland Reservoir No. 2, Wheatland Reservoir No. 3, and the Laramie Plains Lakes

Area: 1,201,671 acres

Primary Crops: Grass Hay, Irrigated Pasture (~91,482 Irrigated Acres)

Facts: ~ 90% Rangeland, ~70% Privately Owned

- ▶ Sponsored by the Laramie Rivers Conservation District.
- ▶ Located primarily in Albany County
- ▶ North Platte River Decree, 1945 (& Modified, 2001)
- ▶ Platte River Recovery Implementation Program
- ▶ Laramie River Decree, 1922

## Middle North Platte – Glendo Watershed

Includes: Glendo Reservoir,  
La Prele Reservoir, and  
Guernsey Reservoir.

Area: 2,095,177 acres

Primary Crops: Alfalfa, Grass  
Hay, Irrigated Pasture

Usage: 67% Range, 17%  
Forest, 10% Pasture-Hay, 4%  
Other, 1% Developed, 1%  
Water/Wetlands

- ▶ Sponsored by the Converse County Conservation District.
- ▶ Includes portions of five other districts including:
  - ▶ Platte County Resource District
  - ▶ Niobrara Conservation District
  - ▶ Laramie Rivers Conservation District
  - ▶ Natrona County Conservation District
  - ▶ Lingle – Ft. Laramie Conservation District

# Progress to Date

- ▶ The 2015 Legislature authorized \$375,000 to complete each study
- ▶ Statements of Interest were received from consultants February 10<sup>th</sup>
- ▶ Proposals submitted by consultants April 3<sup>rd</sup>
- ▶ The top three were interviewed Wednesday May 6<sup>th</sup>
- ▶ May 8<sup>th</sup>, the Commission gave the office authorization to begin contract negotiations
- ▶ Contracts will be signed by the Commission on June 4<sup>th</sup>
- ▶ Notice to proceed us usually issues around the 1<sup>st</sup> of July.
- ▶ We want to hear from you.

# Small Water Projects Program

- ▶ Small project: A project where the estimated construction or rehabilitation cost, permit procurement, construction engineering, and project land procurement are \$135,000 or less and where the maximum financial contribution from the commission is \$35,000 or less.
- ▶ Eligible Entities: Some examples of eligible entities include Conservation Districts, Watershed Improvement Districts, Water Conservancy Districts, Irrigation Districts, and Municipalities.
- ▶ Project Types: Small Reservoirs, Wells, Solar Platforms, Pipelines and Conveyance facilities, Springs, Wetland Development, Irrigation projects, Windmills.



# Small Water Projects Program

- ▶ Eligibility: Projects must be within the boundary of an existing WWDC Watershed study or equivalent as determined by WWDO.
- ▶ Applications: Are due by January 1 of each year, but may be submitted earlier. Applications meeting criteria requirements will be considered during the regularly scheduled WWDC Meeting in March.







Jodie Pavlica, P.E.  
[Jodie.Pavlica@wyo.gov](mailto:Jodie.Pavlica@wyo.gov)  
(307)777-7626



Tony Rutherford  
[Tony.Rutherford@wyo.gov](mailto:Tony.Rutherford@wyo.gov)  
(307)777-7626