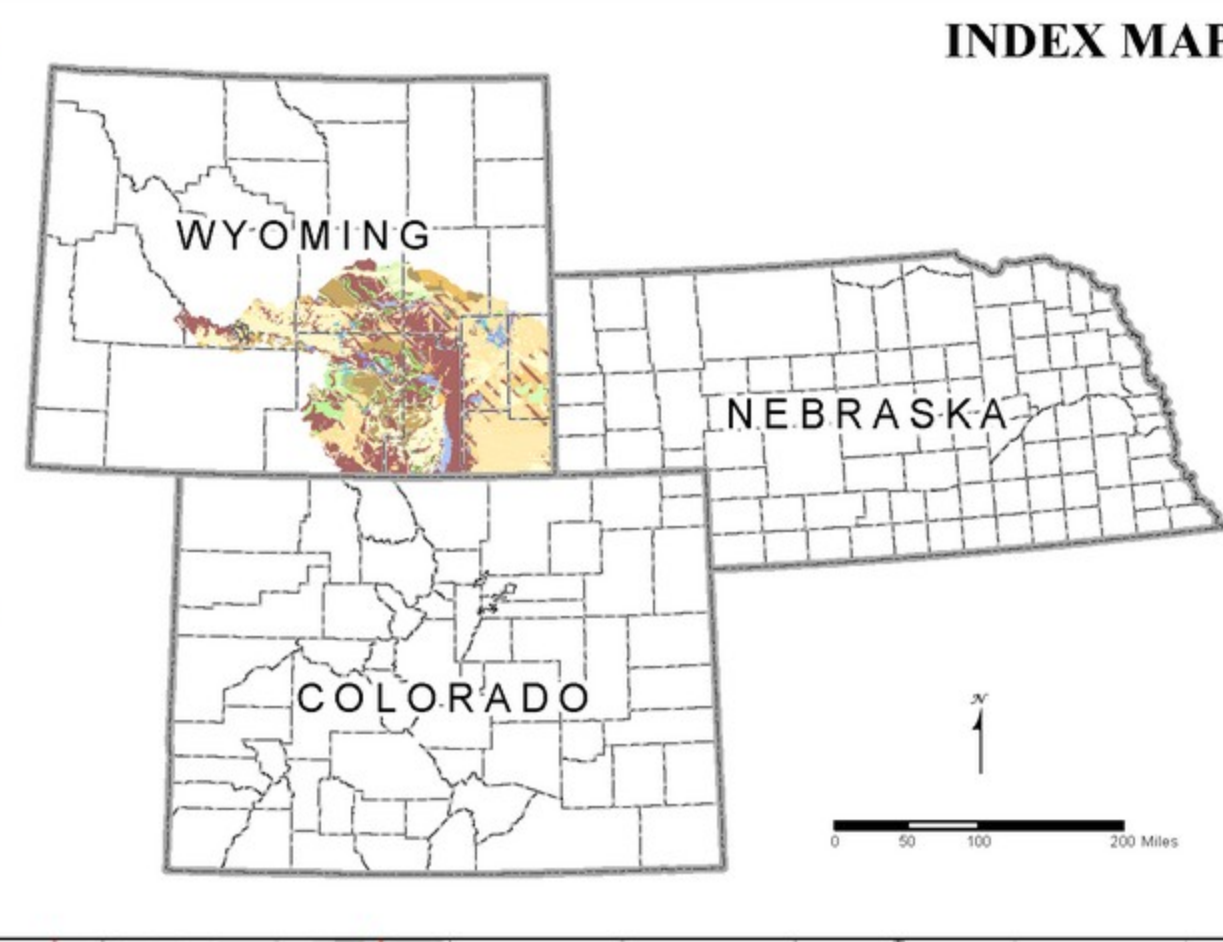
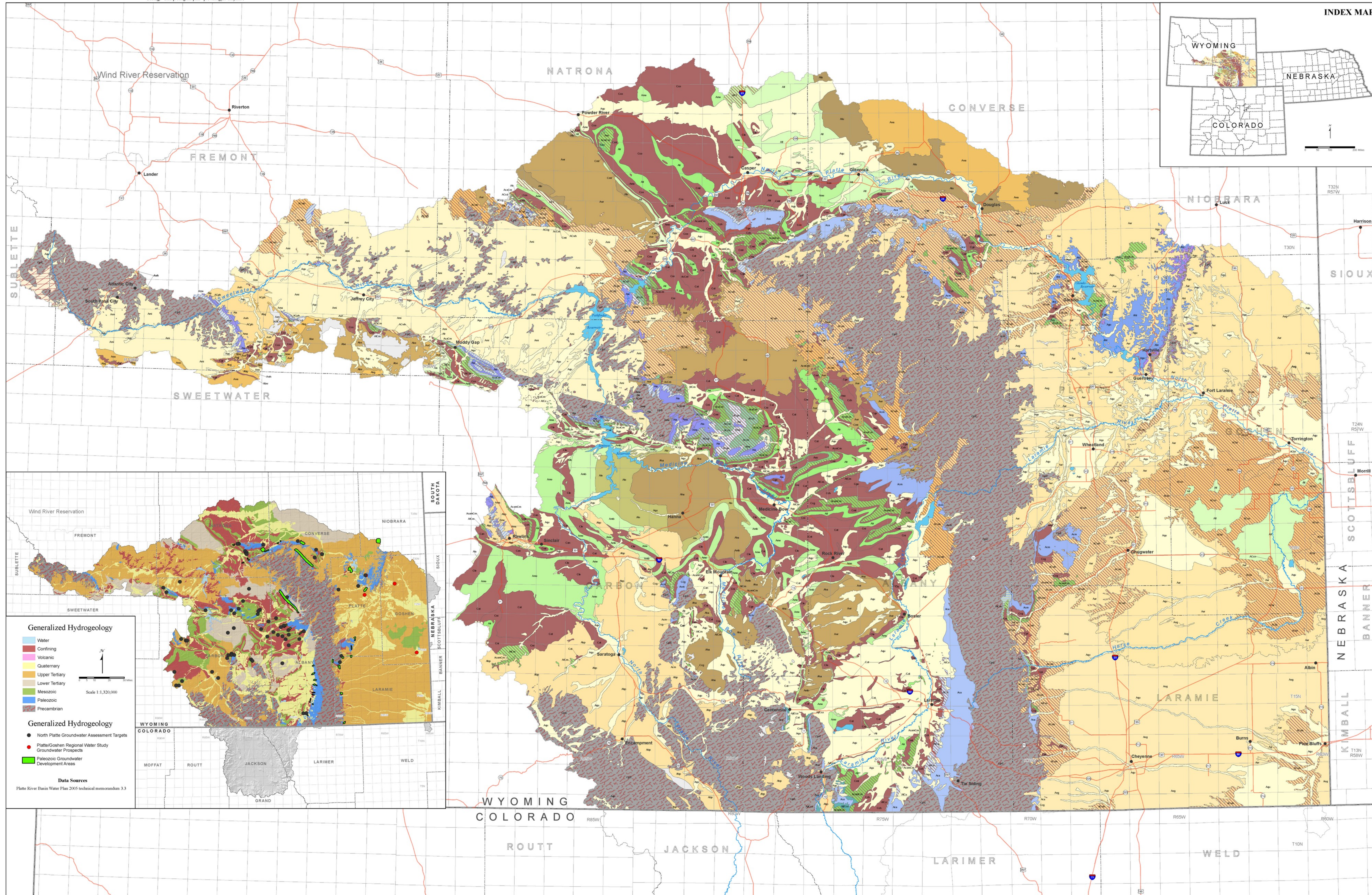


Geology - Interpreting the past - providing for the future



Hydrogeology Platte River Basin Wyoming, Colorado, and Nebraska

compiled by
Tim Bartos, Brett Worman,
Tomas Gracias, and James Stafford

Map Projection: Universal Transverse Mercator (UTM), Zone 13
False Easting: 500000, False Northing: 0
Central Meridian: -106.0 Degrees West
Linear Unit: Meter
Horizontal Datum: North American Datum of 1983 (NAD 83)
Map layout by
Tomas Gracias and James Stafford
Map editing by Suzanne C. Lahr
Magnetic Declination = 9° 55' E
at center of map
(July 1, 2011)
Scale 1:400,000

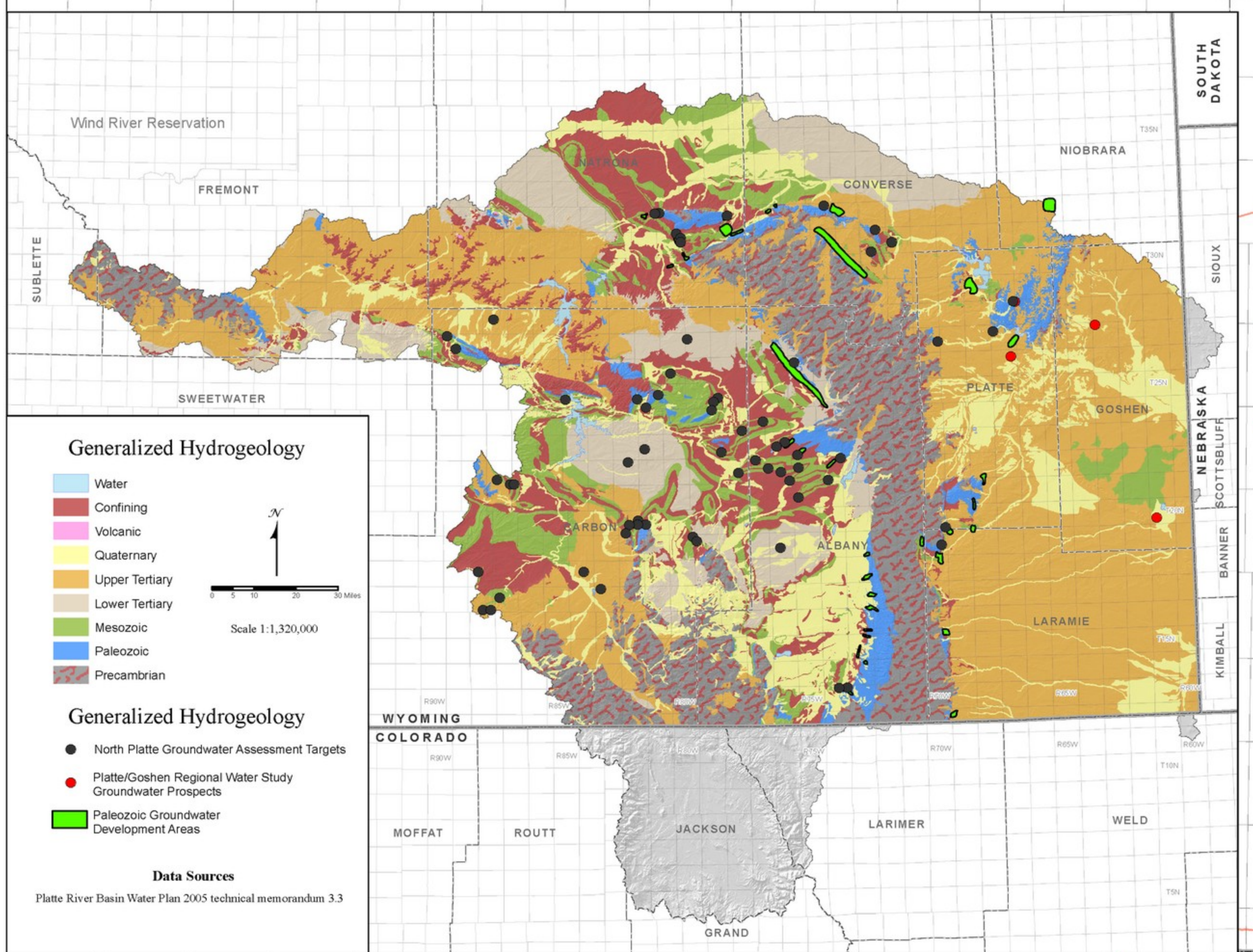
Explanation

- Interstate highway
- US highway
- State highway
- Normal fault - dotted where concealed, half & bar on downthrown block
- Thrust fault - dotted where concealed, south on upper (topographically higher) plate
- City or town
- Township boundary
- County boundary
- State boundary
- Lake or reservoir
- River or creek

Hydrogeology

Hydrogeologic Units - Compiled from Plates J, K, M, S, T, and U

- Undefined hydrogeologic properties
- Quaternary unconsolidated deposit aquifer
- Miocene aquifer
- Undifferentiated Tertiary lithostratigraphic units
- Miocene and Oligocene aquifer
- Ogallala aquifer
- Arbuckle aquifer
- Brownie Park aquifer
- White River aquifer
- White River aquifer confining unit
- Brule aquifer and confining unit
- Chalkian aquifer and confining unit
- Shawnee aquifer and confining unit
- Brigader aquifer
- Green River confining unit
- Wyandich aquifer
- Wyandich Fort Union aquifer
- Battle Spring branch aquifer
- Battle Spring aquifer
- Wind River aquifer
- Indian Meadows confining unit
- Hanna aquifer
- Fort Union aquifer
- Ferns aquifer
- Lance aquifer
- Lance-Fox Hills aquifer
- Lance aquifer and Lewis confining unit
- Medicine Bow aquifer
- Fox Hills aquifer
- Fox Hills aquifer and Lewis confining unit
- Montrose-Lewis confining unit
- Lewis confining unit
- Mosier aquifer
- Purcell confining unit
- Cody confining unit
- Steele confining unit
- Steele-Niobrara confining unit
- Niobrara confining unit
- Niobrara confining unit, Frontier aquifer, and Mowry-Thermopsis confining unit
- Frontier aquifer
- Frontier aquifer and Mowry-Thermopsis confining unit
- Mowry-Thermopsis confining unit
- Cloverly aquifer and Morrison aquifer and confining unit
- Cloverly and Morrison confining unit
- Cloverly and Sundance aquifers and Morrison aquifer and confining unit
- Cloverly and Sundance aquifers and Morrison confining unit
- Sundance aquifer
- Sundance-Sagest aquifer
- Chaparral aquifer and confining unit
- Chaparral confining unit
- Chaparral-Divide aquifer and confining unit
- MESOZOIC and PALEOZOIC
- Alto and Forts aquifer and Chaparral and Sundance confining units
- Chaparral-Cross Lig aquifer and confining unit
- Chaparral-Cross Lig confining unit
- Wind River aquifer
- Undifferentiated Mesozoic and Paleozoic lithostratigraphic units
- PALEOZOIC
- Grosvonts aquifer and confining unit
- Grosvonts confining unit
- Fertile aquifer and Sundance confining unit
- Undifferentiated Paleozoic lithostratigraphic units
- Phosphoria aquifer and confining unit
- Casper aquifer
- Casper-Madison aquifer
- Harville aquifer
- Tensley-American aquifer
- Madison aquifer
- Ogarey aquifer
- PRECAMBRIAN
- Precambrian basal confining unit



- #### Generalized Hydrogeology
- Water
 - Confining
 - Volcanic
 - Quaternary
 - Upper Tertiary
 - Lower Tertiary
 - Mesozoic
 - Paleozoic
 - Precambrian
- #### Generalized Hydrogeology
- North Platte Groundwater Assessment Targets
 - Platte/Goshen Regional Water Study Groundwater Prospects
 - Paleozoic Groundwater Development Areas
- Data Sources
Platte River Basin Water Plan 2003 technical memorandum 3.3

REFERENCES

Bartos, T., 2012, Platte River Basin Water Plan Update Groundwater Study Plates J, K, M, S, T, and U, USGS Wyoming Water Science Center
 Blackstone, D. L., Jr., 1993, Precambrian basement map of Wyoming, Wyoming State Geological Survey Map Series 43, scale 1:1,000,000.
 Lilgraves, J.A., and Schar, A. W., 1996, A new look at the Laramide Orogeny in the Seminoe and Shirley Mountains, Freezout Hills, and Hanna Basin, south-central Wyoming, Wyoming State Geological Survey Public Information Circular no. 36, 52 p.
 Love, J.D., Christiansen, A.C., and Ver Flog, A.J., compilers, 1993, Stratigraphic chart showing the Phanerozoic nomenclature for the state of Wyoming, Wyoming State Geological Survey [Geological Survey of Wyoming] Map Series 41 (MS-41)
 Love, J.D., and Christiansen, A.C., compilers, 1985, Geologic map of Wyoming, U.S. Geological Survey, 3 sheets, scale 1:500,000.
 Showler, D.B., Green, G.M., Morath, L.C., Hovan, W.D., Wilson, A.B., Mowry, D.W., and Van Gosen, B.S., 2005, Preliminary integrated geologic map databases for the United States Central States - Montana, Wyoming, Colorado, New Mexico, Kansas, Oklahoma, Texas, Missouri, Arkansas, and Louisiana, North Dakota, South Dakota, Nebraska, and Iowa, U.S. Geological Survey Open-File Report 2005-1031, version 1.2, updated December 2007, digital data [includes Wyoming, Colorado, and Nebraska 1:500,000-scale].
 Tele Atlas North America, Inc., and ESRI, 2006 World, Europe, United States, Canada, and Mexico, ESRI data & maps
 Twiss, Ogden, comp., 1979, Geologic map of Colorado, U.S. Geological Survey, 2 sheets, scale 1:500,000.

DISCLAIMERS

Users of these maps are cautioned against using the data at scales different from those at which the maps were compiled. Using this data at a larger scale will not provide greater accuracy and is, in fact, a misuse of the data.
 The Wyoming State Geological Survey (WSGS) and the State of Wyoming make no representation or warranty, expressed or implied, regarding the use, accuracy, or completeness of the data presented herein, or of a map printed from these data. The act of distribution shall not constitute such a warranty. The WSGS does not guarantee the digital data or any map printed from the data to be free of errors or inaccuracies.
 The WSGS and the State of Wyoming disclaim any responsibility or liability for interpretations made from these digital data or from any map printed from these digital data, and for any decisions based on the digital data or printed maps. The WSGS and the State of Wyoming retain and do not waive sovereign immunity.
 The use of or reference to trademarks, trade names, or other product or company names in this publication is for descriptive or informational purposes only, or is pursuant to licensing agreements between the WSGS or State of Wyoming and software or hardware developers/vendors, and does not imply endorsement of those products by the WSGS or the State of Wyoming.

NOTICE TO USERS OF INFORMATION FROM THE WYOMING STATE GEOLOGICAL SURVEY

The WSGS encourages the fair use of its material. We request that credit be expressly given to the "Wyoming State Geological Survey" when citing information from this publication. Please contact the WSGS at 307-766-2286, ext. 224, or by e-mail at wsgs.admin@wyo.gov if you have questions about citing materials, preparing acknowledgments, or extensive use of this material. We appreciate your cooperation.
 Individuals with disabilities who require an alternative form of this publication should contact the WSGS. For the TTY relay operator call 800-877-8975.
 For more information about the WSGS or to order publications and maps, go to www.wsgs.wyo.gov, call 307-766-2286, ext. 224, or e-mail wsgs.sales@wyo.gov.