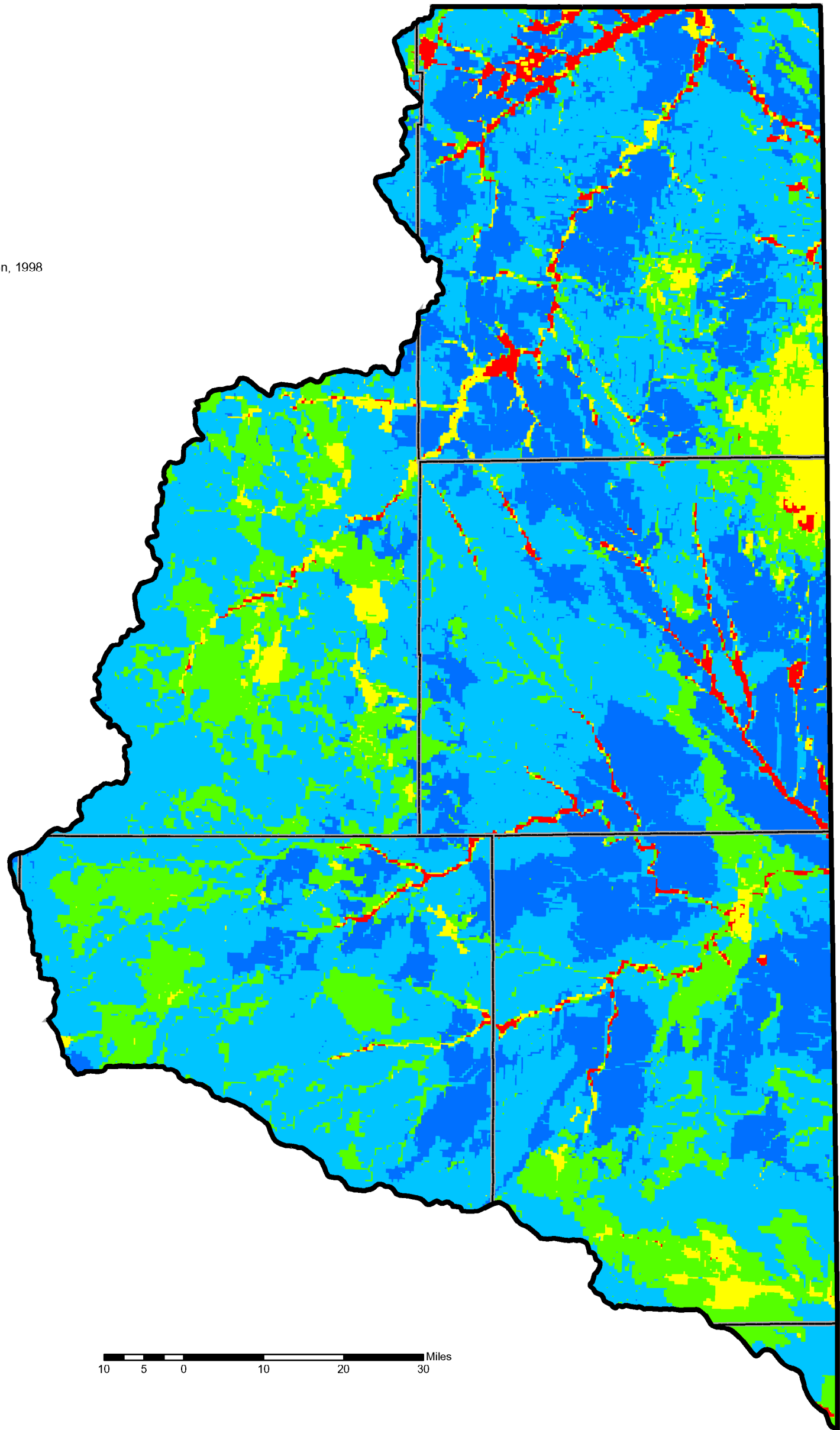


APPENDIX D

Aquifer Sensitivity to Contamination and Ground Water Vulnerability to Pesticides, Northeast Wyoming River Basins Plan Area

- Legend**
- LOW
 - MEDIUM
 - HIGH
 - HIGH
 - HIGH

Source: Hamerlinck and Arneson, 1998




Aquifer Sensitivity to Contamination



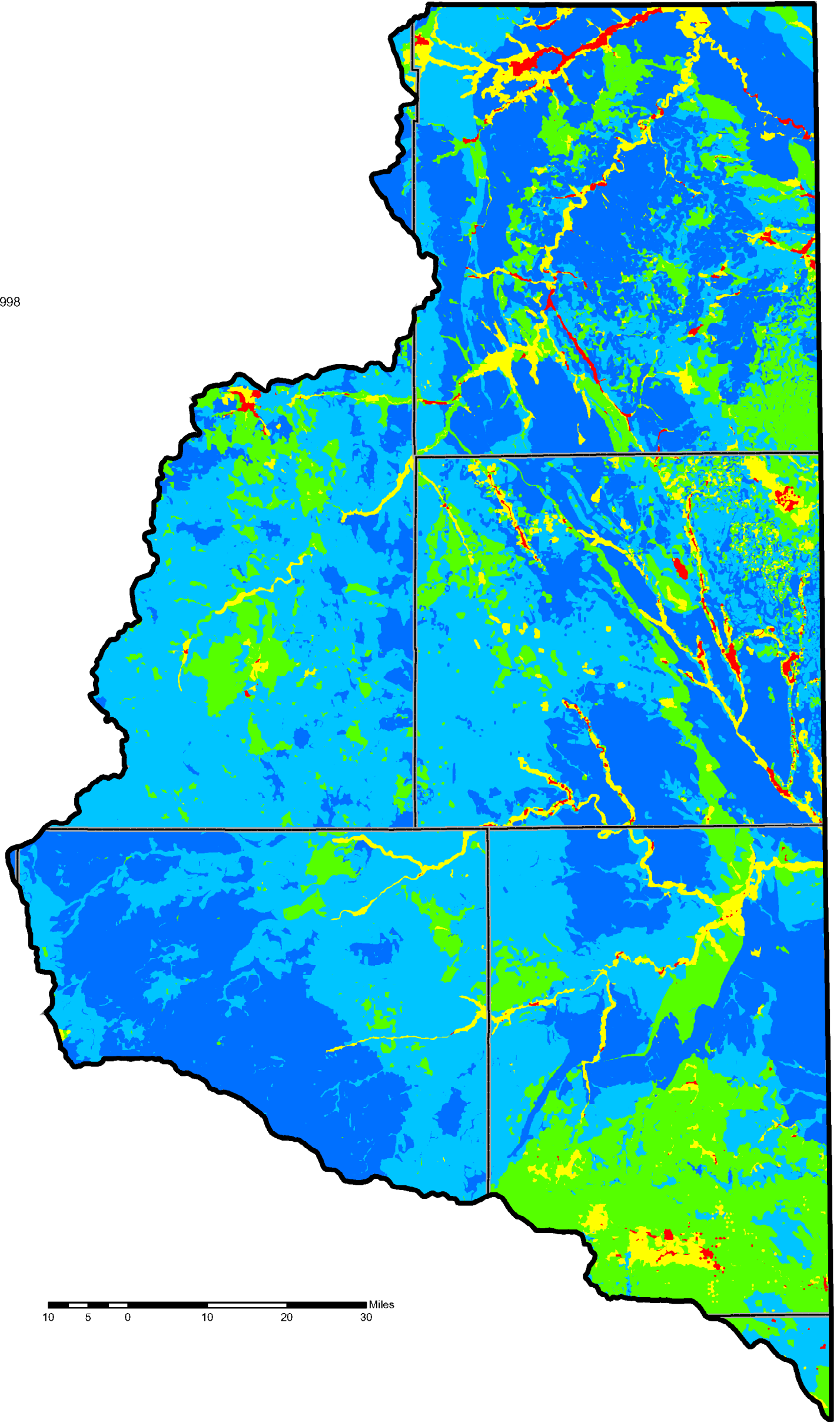
HKM Engineering Inc.
 Granite Tower Building
 222 N. 32nd St., Suite 700
 P.O. Box 31318
 Billings, MT 59107-1318
 (406) 656-6399, FAX (406) 656-6398

PLATE D.1

Legend

-  LOW
-  MEDIUM
-  MEDIUM
-  HIGH
-  HIGH

Source: Hamerlinck and Arneson, 1998



Ground Water Vulnerability to Pesticides



HKM Engineering Inc.
Granite Tower Building
222 N. 32nd St., Suite 700
P.O. Box 31318
Billings, MT 59107-1318
(406) 856-8399, FAX (406) 856-8398

PLATE D.2