

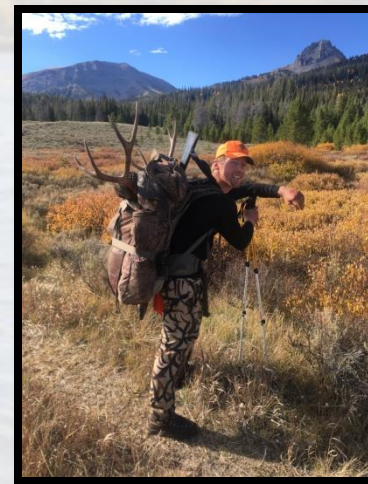
Pinedale Aquatics



Pete Cavalli



Darren Rhea



Luke Schultz



Kris Holmes



Pete Feck



Hilda Sexauer

AIS MOA

- We applied for a grant under the MOA.
- Cost of operations in the CO/Green River drainage.
- Costs of AIS technician time.
 - 10 AIS techs,
 - Evanston Specialist for 9-months,
 - Green River Specialist for 12-months = \$57,885.
 - Equipment the first year.
 - The funding becomes available in October 2017.
- The broad MOA allowed us to apply for a grant.
- This funding should be available to us for several years to come. We will use it to fund our AIS inspection program in the Green River drainage.

Bare Creek Treatment

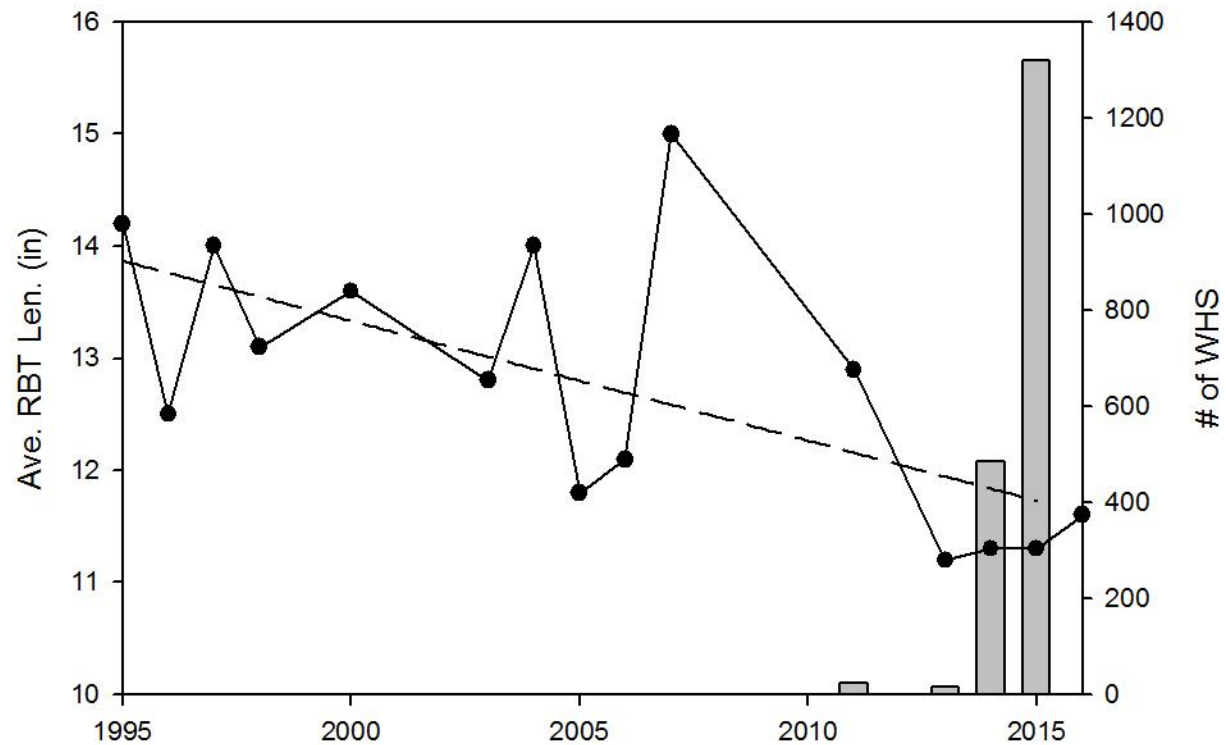
- Bare Creek treatment
 - 2015 and 2016
- Maki Creek transplant
 - Transplant Colorado River Cutthroat trout from nearest neighbor



Dollar Lake Treatment

- Dollar Lake is a 27-acre
- Maximum depth of 34 ft, is fed by springs and groundwater
- Angler use is considered high
- Recent creel surveys have estimate angler use at 2,500 days/year, with open-water and ice angling opportunities available year-round.
- Rainbow trout is the primary game fish and are stocked annually.
- Other fishes known to currently inhabit Dollar Lake include native Mountain Whitefish and Speckled Dace, and nonnative Redside Shiner and White Sucker.
- Nonnative White Sucker were first discovered in Dollar Lake in 2007 and their numbers, based on catch-per-unit-effort.
- Mean length of captured Rainbow Trout has declined
- Mean Wr for Rainbow Trout historically exceeded 90, however, RBT collected in 2016 had a mean Wr = 70, the lowest mean Wr on record.

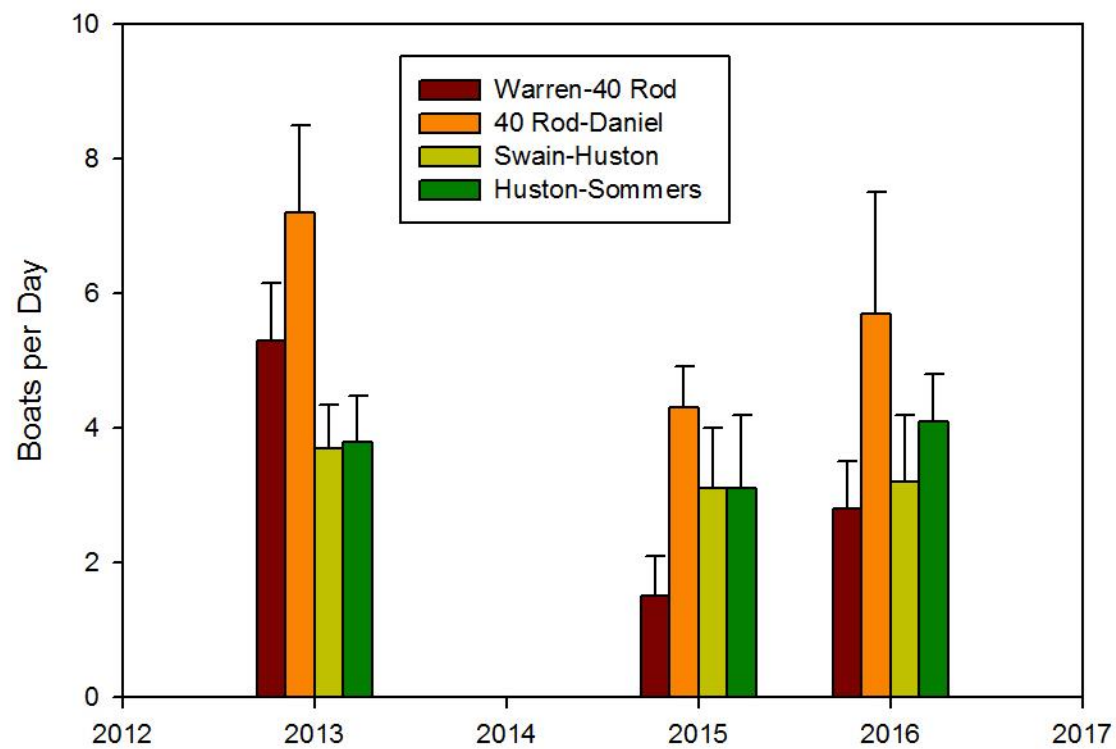
Dollar Lake Treatment



Angler Use and Access

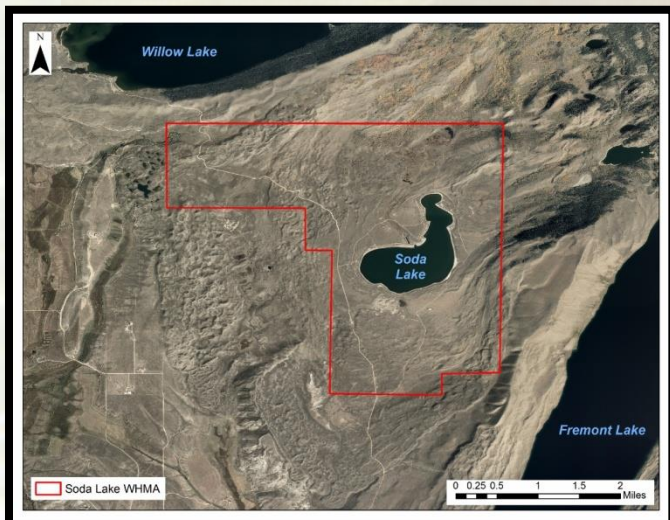
- Time Lapsed Cameras
 - Cameras two locations
 - 40-Rod Access Area
 - Huston Access Area.
 - Cameras capture boaters coming off or leaving at a site, providing use data for reaches above and below the camera.





Woody Vegetation Regeneration at Soda Lake WHMA

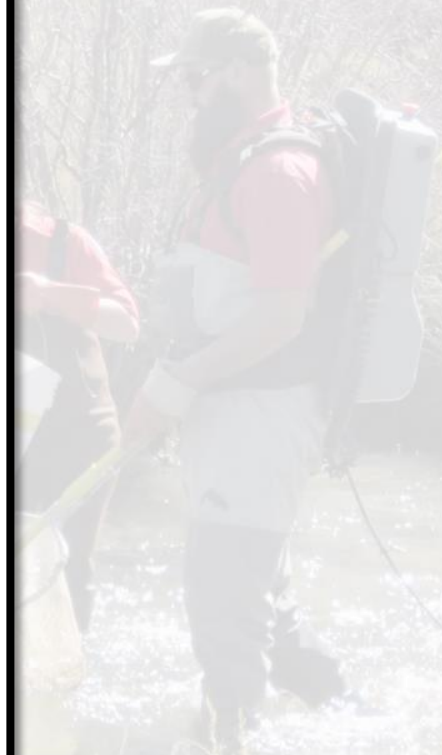
- Restore woody vegetation around Soda Lake, inlet and wetland area
- Steel jack fence aspens and willows
- 4 – 6 years protection
- 8 to 10 feet in height



New Fork River Habitat Enhancement

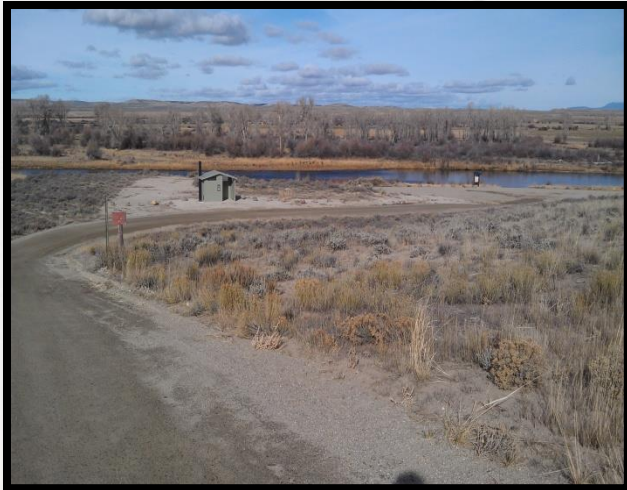


New Fork River



Fishing Access Development

- Remmick Access
- East Fork Confluence

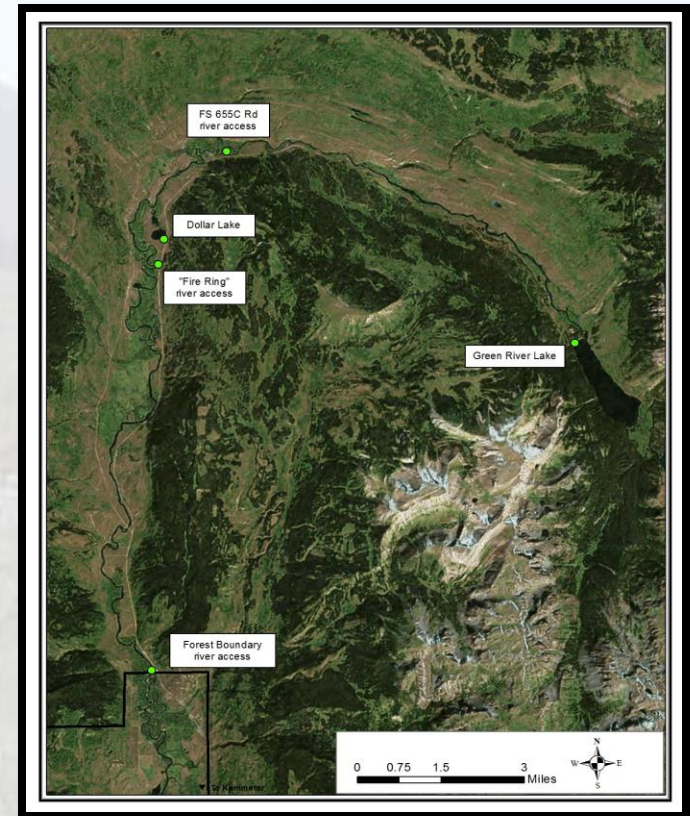
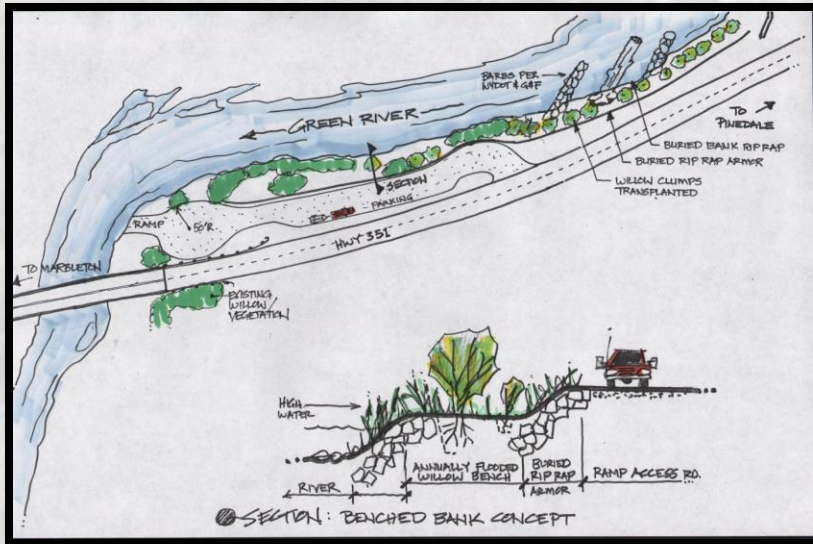


- Gas Wells



Fishing Access Development

- Upper Green on Forest
- Hwy 351



Roundtail Chub Transplant

- Create refuge population
 - Burnt Lake to Meadow Lake
 - Unknown if Meadow Lake is historic range
 - No predators
 - Inlet for spawning
 - Rocky shoreline in the outlet area of the lake for spawning

Pine Creek

- Fremont User Meeting
 - Spring and Fall
- Pine Creek – Town, USFS, Highland Irrigation, Lee Irrigation, BLM
 - Storage water : 173 acre-feet
 - Direct flow: 40 cfs in May, June, and October; 26 cfs in April; 32 cfs in November; and 20 cfs in Dec-Mar. We do not have a direct flow right in July, August, and September

Spawning Operations



- North Piney Lake
 - Colorado River cutthroat trout (June/July operation)
- Meadow Lake
 - Grayling (May operation)
- New Fork Lake
 - Kokanee (September operation)
- Green River Lake
 - Kokanee (new operation – 2017 first year)

Graduate Research Projects

- **Population structure, movement dynamics, and population structure of Burbot in the upper Green River system**
University of Idaho (Tucker Brauer)
- **Movement dynamics and survival of hatchery reared Colorado River cutthroat trout post stocking**
University of Wyoming (Alex LeCheminant)
- **Boreal toad habitat selection and survival in relation to grazing intensity and disease prevalence**
University of Wyoming (Gabe Barrile)
- **Ecological Responses to Stressors in Headwater Streams of the Wyoming Range**
University of Wyoming (Richard Walker)

