

RECLAMATION

Managing Water in the West

**Fontenelle Operations
Wyoming Water Update
May 17, 2017**



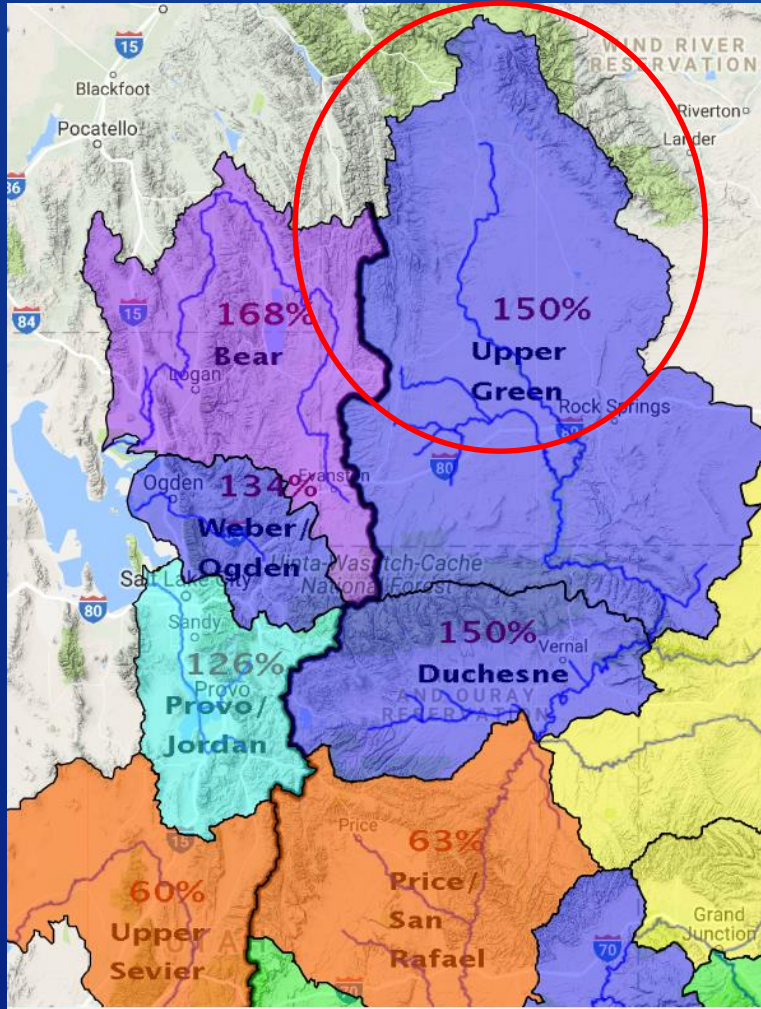
U.S. Department of the Interior
Bureau of Reclamation

Jed Parker, P.E.
Upper Colorado Region

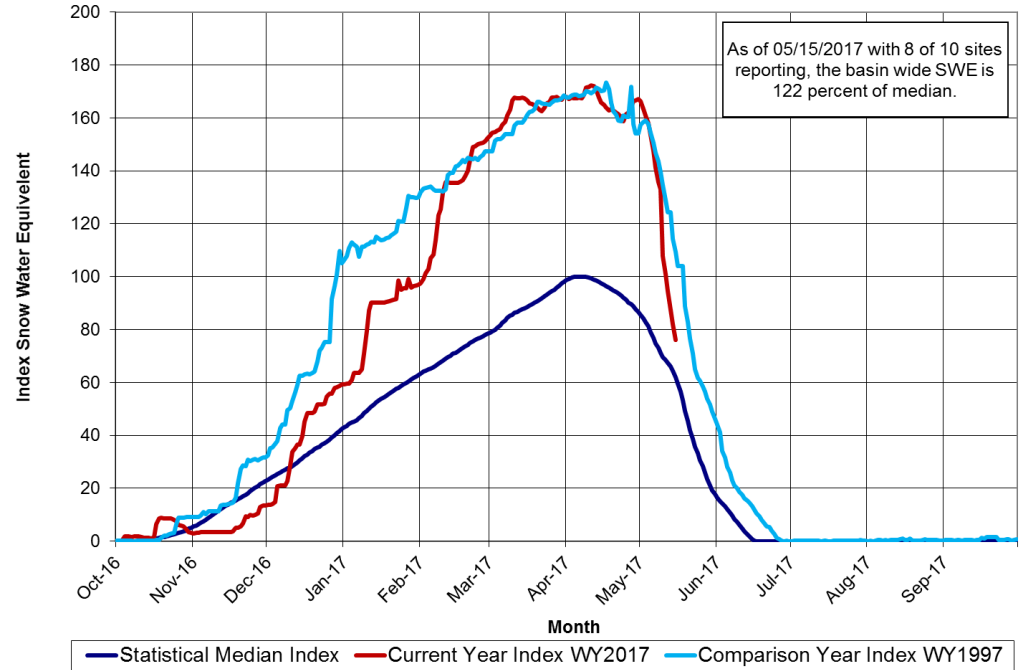
Presentation Overview

- Review of snowpack
- Compare prior year runoff volumes to forecasts
- Review of 1997 Operations
- Review of 2016 Operations
- Current operations
- Planned operations for 2017

Snow Water Equivalent (SWE)



Upper Green River Basin Snotel Tracking
Aggregate of 10 Snotel Sites above Fontenelle Reservoir

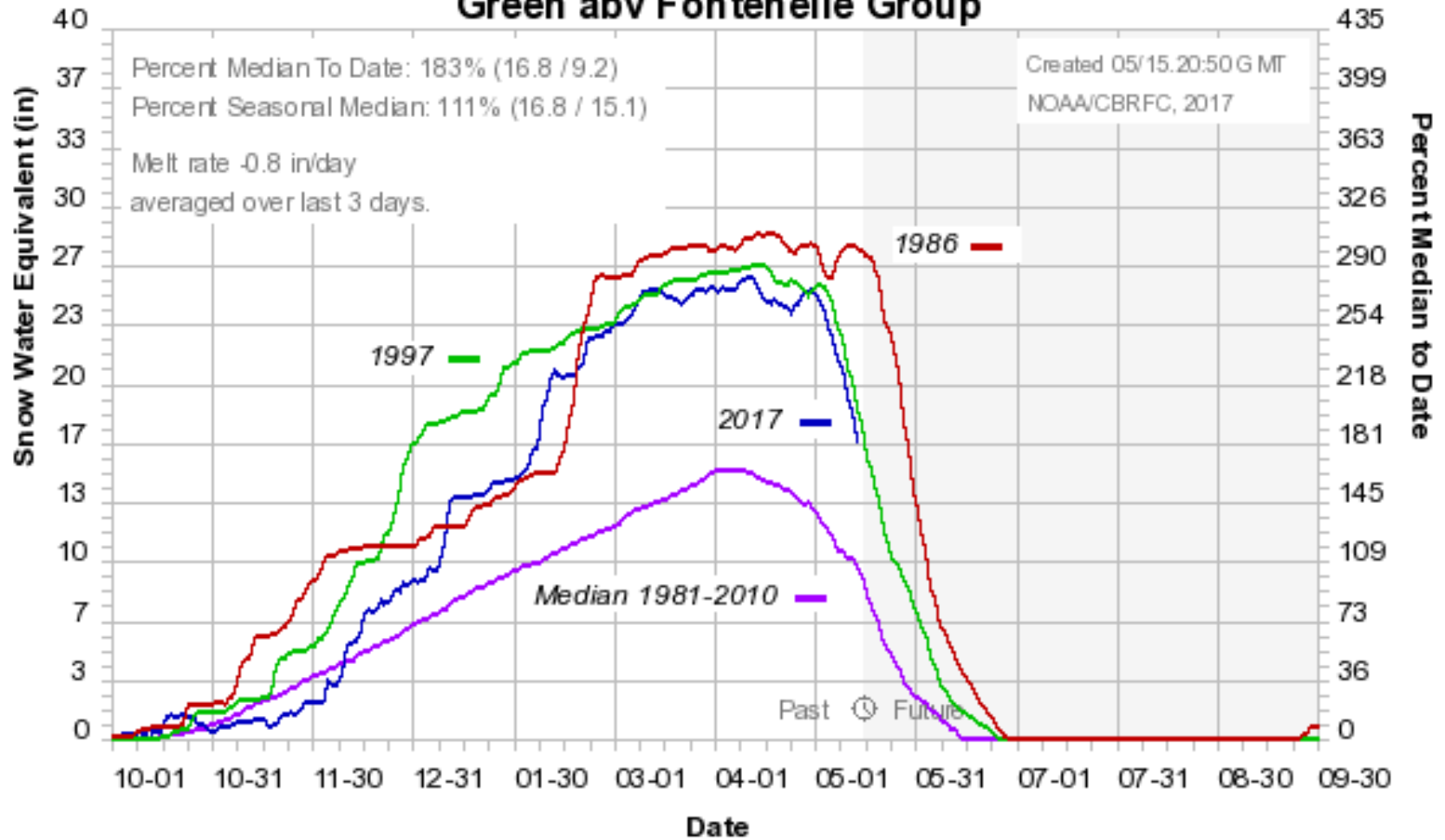


Data Provided by the Natural Resource Conservation Service

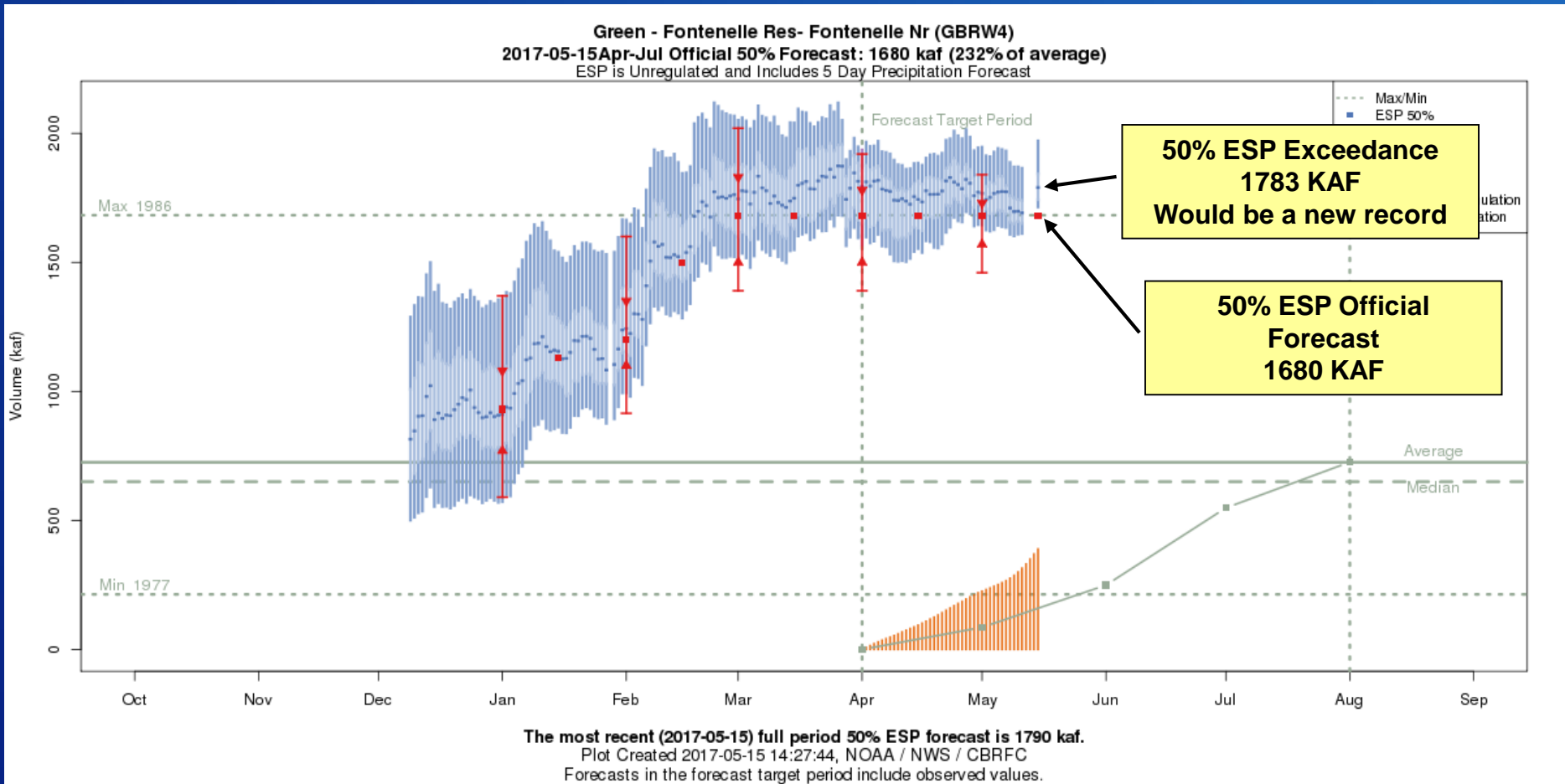


Current Snowpack

Colorado Basin River Forecast Center Green abv Fontenelle Group

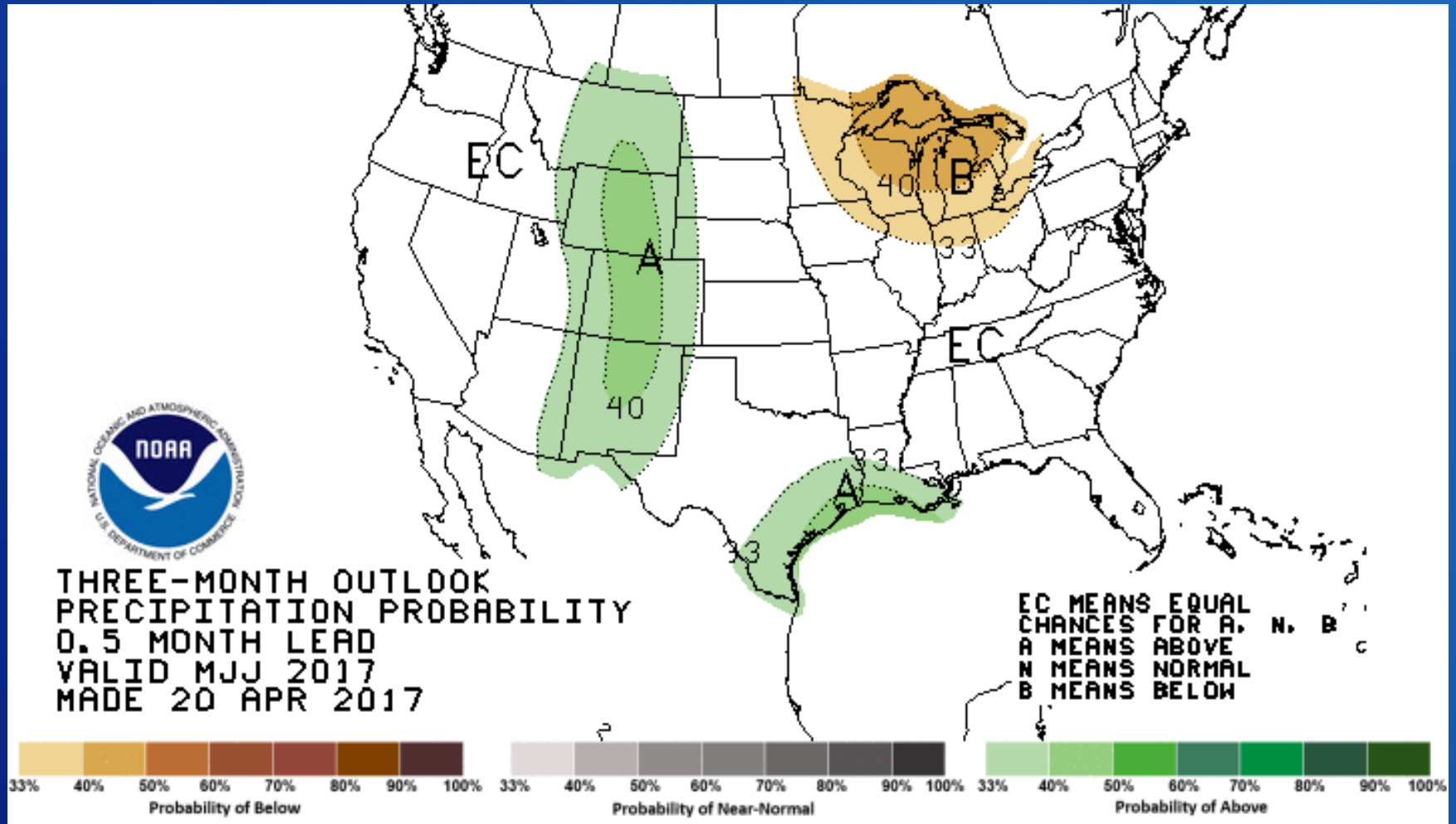


Forecast Evolution



RECLAMATION

3-Month Precipitation Outlook

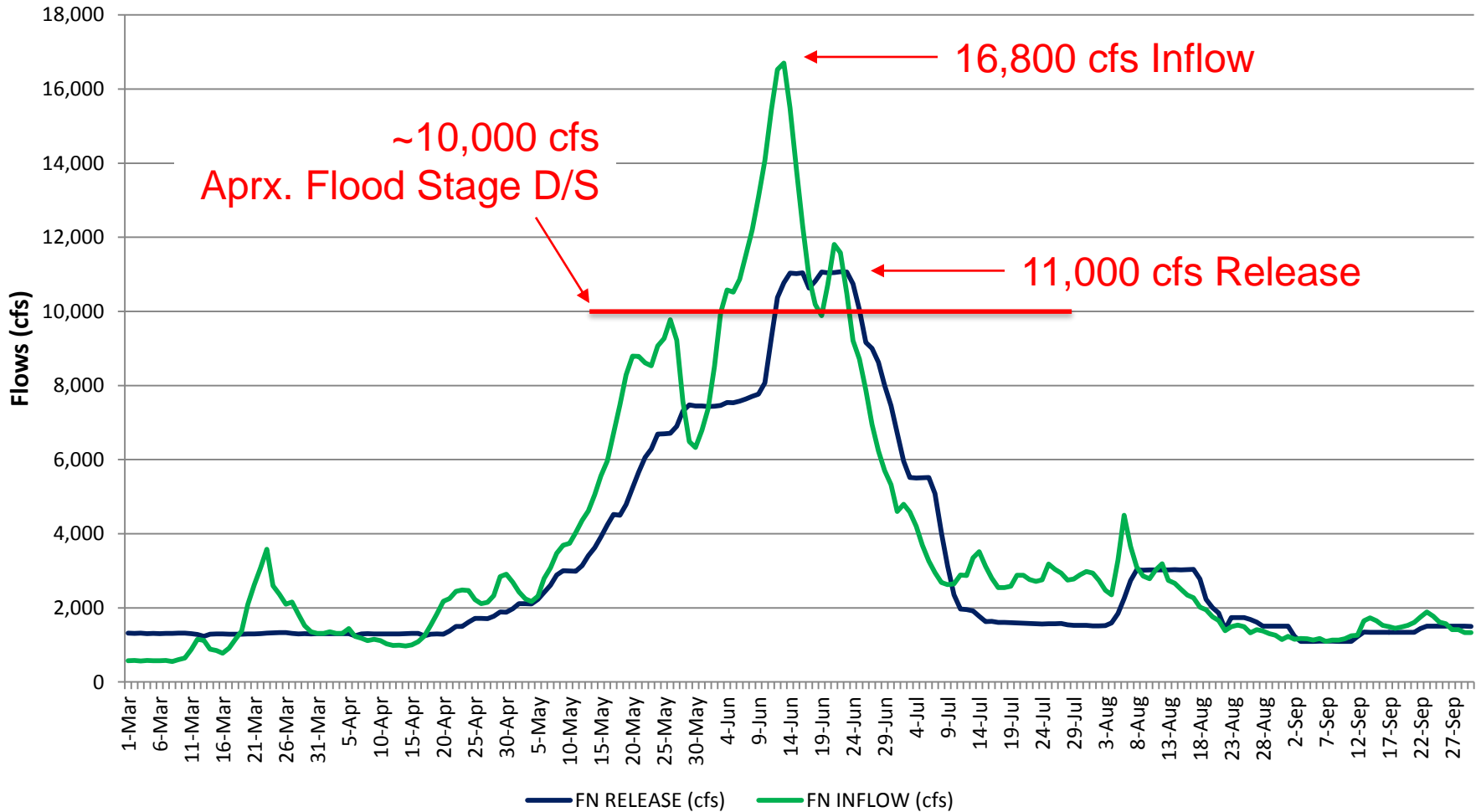


Presentation Overview

- Review of snowpack
- Compare prior year runoff volumes to forecasts
- Review of 1997 Operations
- Review of 2016 Operations
- Current operations
- Planned operations for 2017

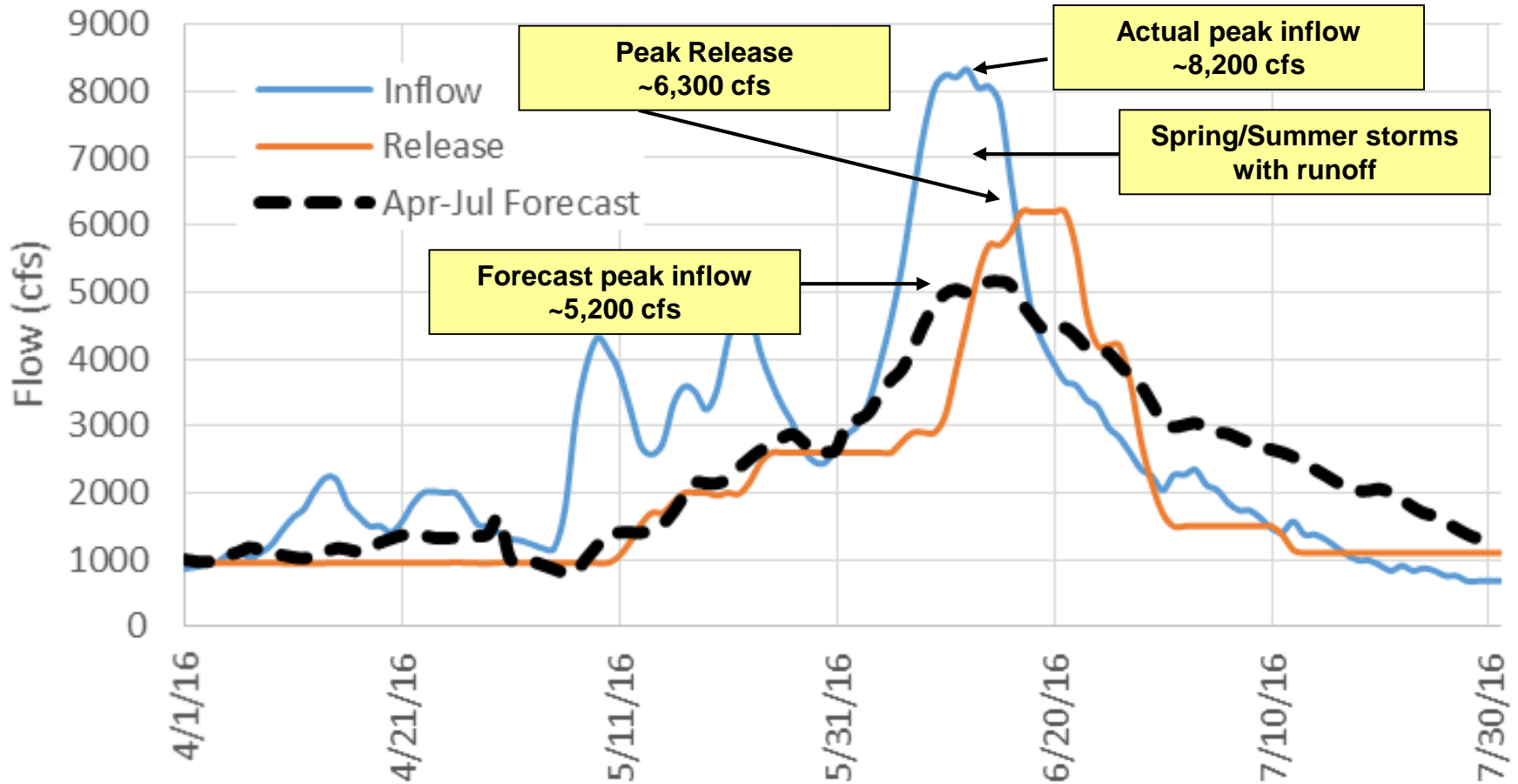
Historic Operations

Fontenelle Dam Inflow & Releases, 1997



Review of Operations

Fontenelle Operations 04/16 - 08/16



Presentation Overview

- Review of snowpack
- Compare prior year runoff volumes to forecasts
- Review of 1997 Operations
- Review of 2016 Operations
- Current operations
- Planned operations for 2017

Fontenelle Reservoir Current Status

Storage

Live capacity	345,000	AF
Capacity on 5/16/2017	<u>146,000</u>	AF
	(42% full)	

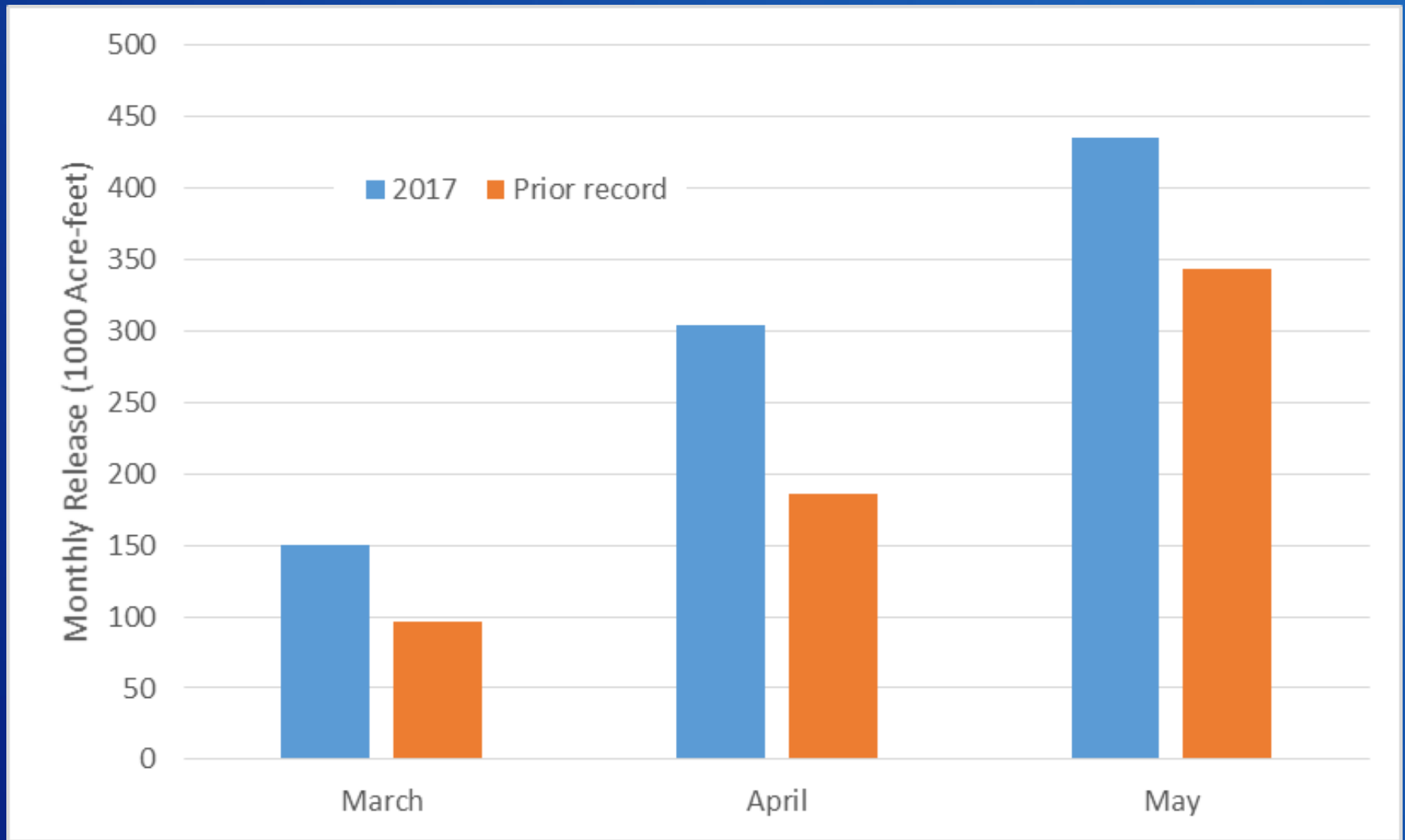
Pool elevation

Reservoir elev. (Min)	6463.00	feet
Elevation on 5/16/2017	<u>6476.00</u>	feet
Elevation above (Min)	13.00	feet

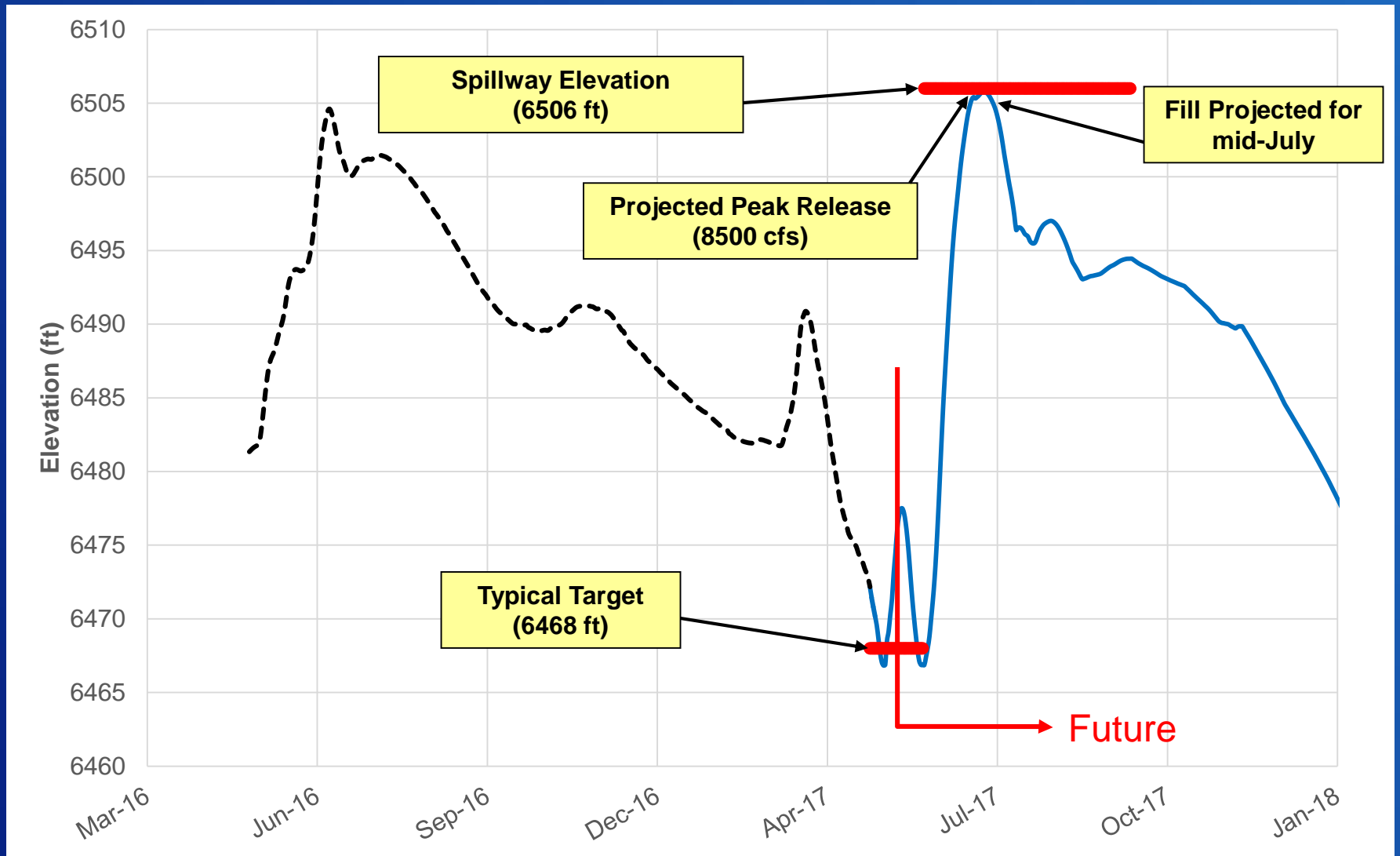
Inflow and release

Average inflow	11,000	cfs
Average release	7,500	cfs

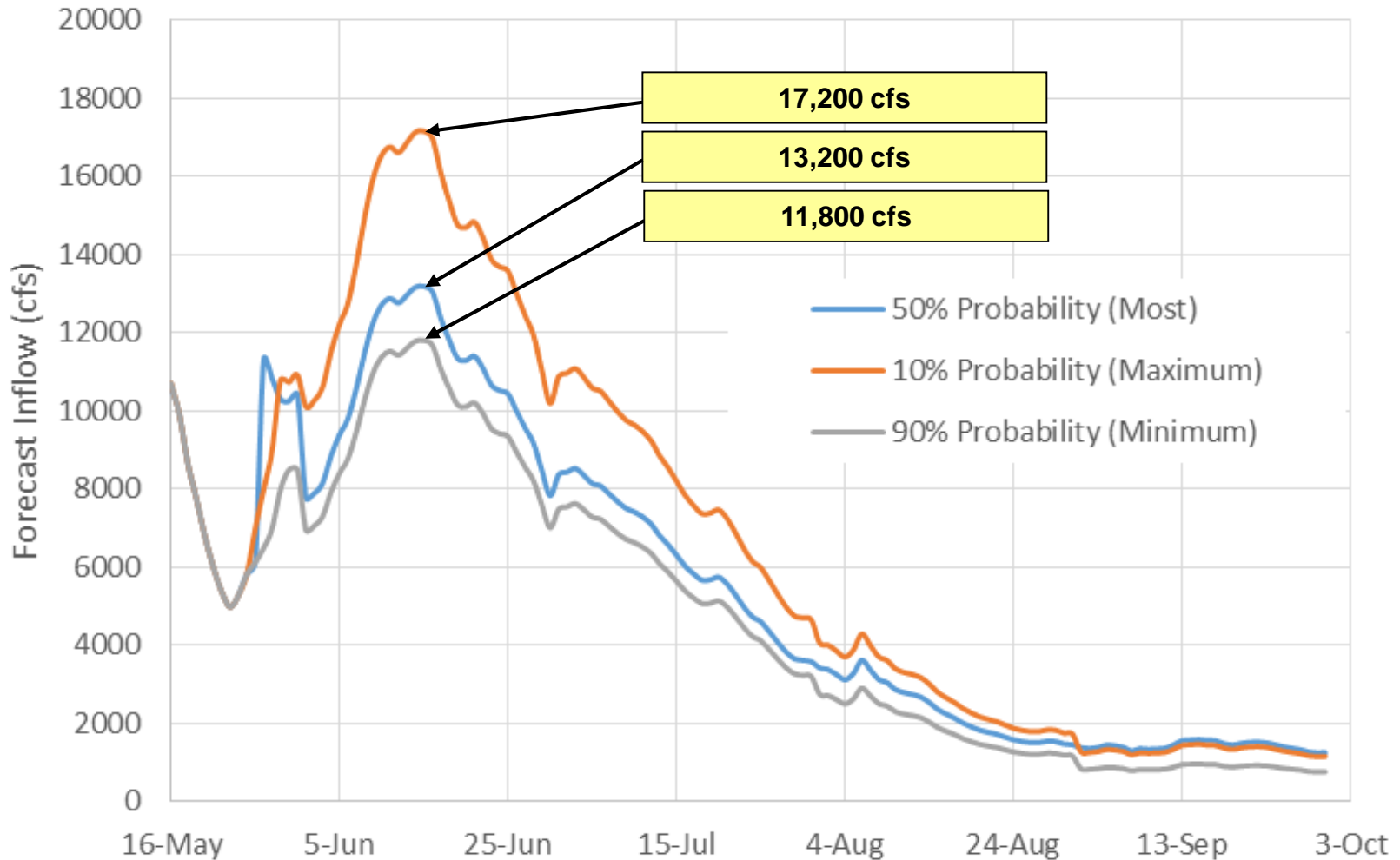
2017 Releases vs Prior records



Projected Reservoir Elevation



Probable Inflows & Releases



Review

- 1997 is an analogous year regarding snowpack
- March, April, and May volume releases have been records
- Uncertainty in forecasts – timing, volume, and possibility of rainstorms
- Planning to safely pass flows without use of the spillway (8,500 cfs peak release)
 - Should avoid flooding downstream
 - Possibility releases could exceed flood stage (>10,000 cfs)

Fontenelle Work Group Meeting April 2017

Questions / Comments ?

Jed Parker, P.E.
jparker@usbr.gov
801-524-3816

<https://www.usbr.gov/uc/water/crsp/cs/ftd.html>

RECLAMATION