

RECLAMATION

Managing Water in the West

Hydrology and Forecasted Operations:

Big Sandy, Meeks Cabin, & Stateline

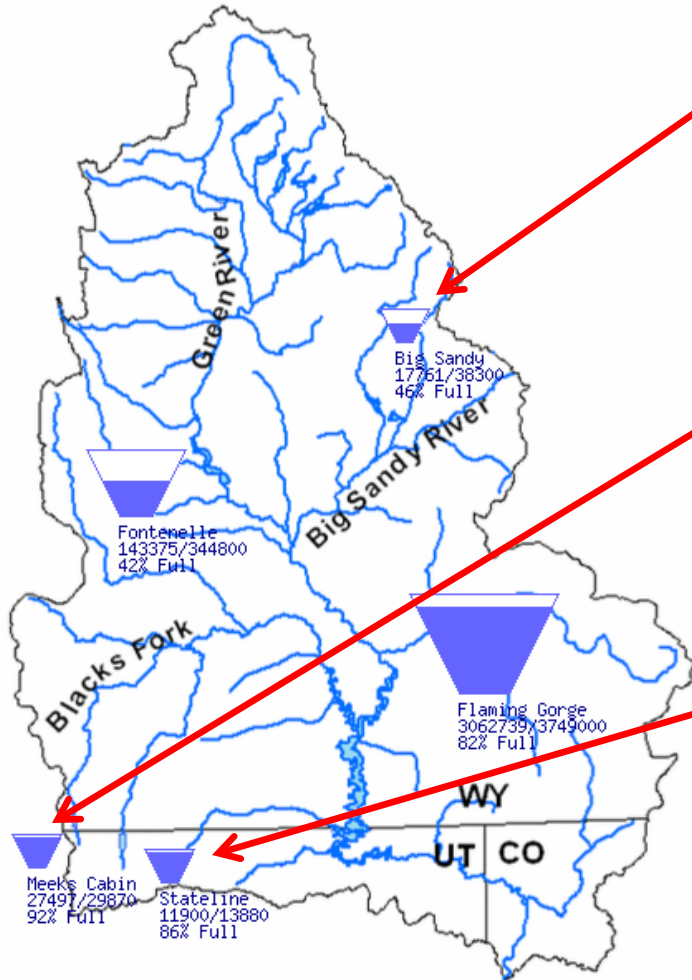
May 20, 2014



U.S. Department of the Interior
Bureau of Reclamation

Current Reservoir Conditions

Data Current as of:
05/18/2014 **Upper Green River Basin**



- **Big Sandy**
 - Live Storage: 49%
 - Inflows: 100-200 cfs
 - Releases: >100 cfs
- **Meeks Cabin**
 - Live Storage: 92%
 - Inflows: > 800 cfs
 - Releases: 700-800 cfs
- **Stateline**
 - Live Storage: 88%
 - Inflows: >200 cfs
 - Releases: >70 cfs

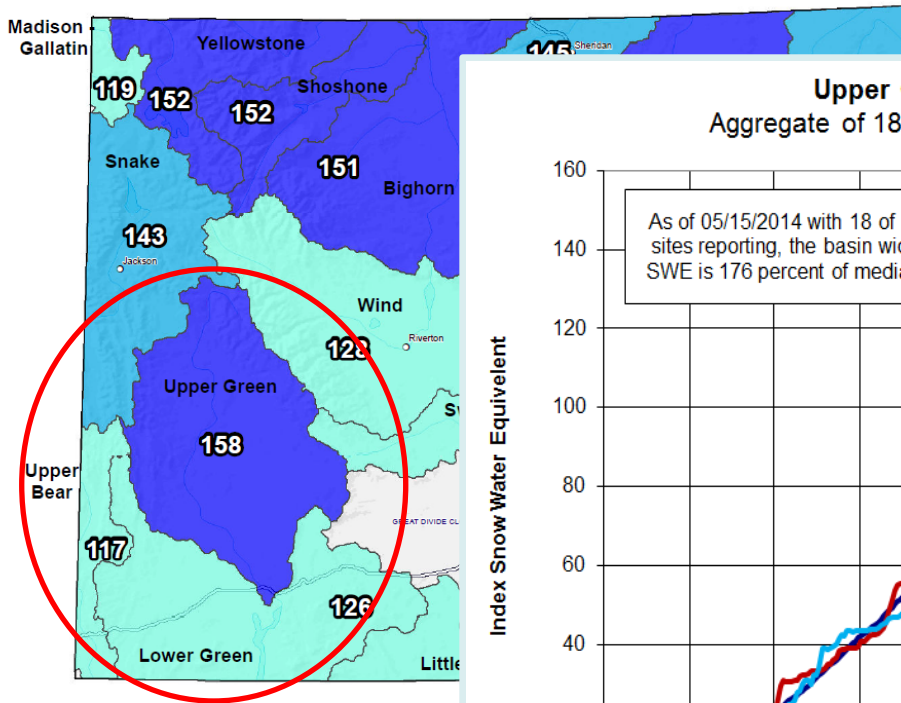
Upper Green Snow Conditions

Wyoming SNOTEL Current Snow Water Equivalent (SWE) % of Normal

Apr 01, 2014

Current Snow Water Equivalent (SWE) Basin-wide Percent of 1981-2010 Median

- unavailable *
- <50%
- 50 - 69%
- 70 - 89%
- 90 - 109%
- 110 - 129%
- 130 - 149%
- ≥150%

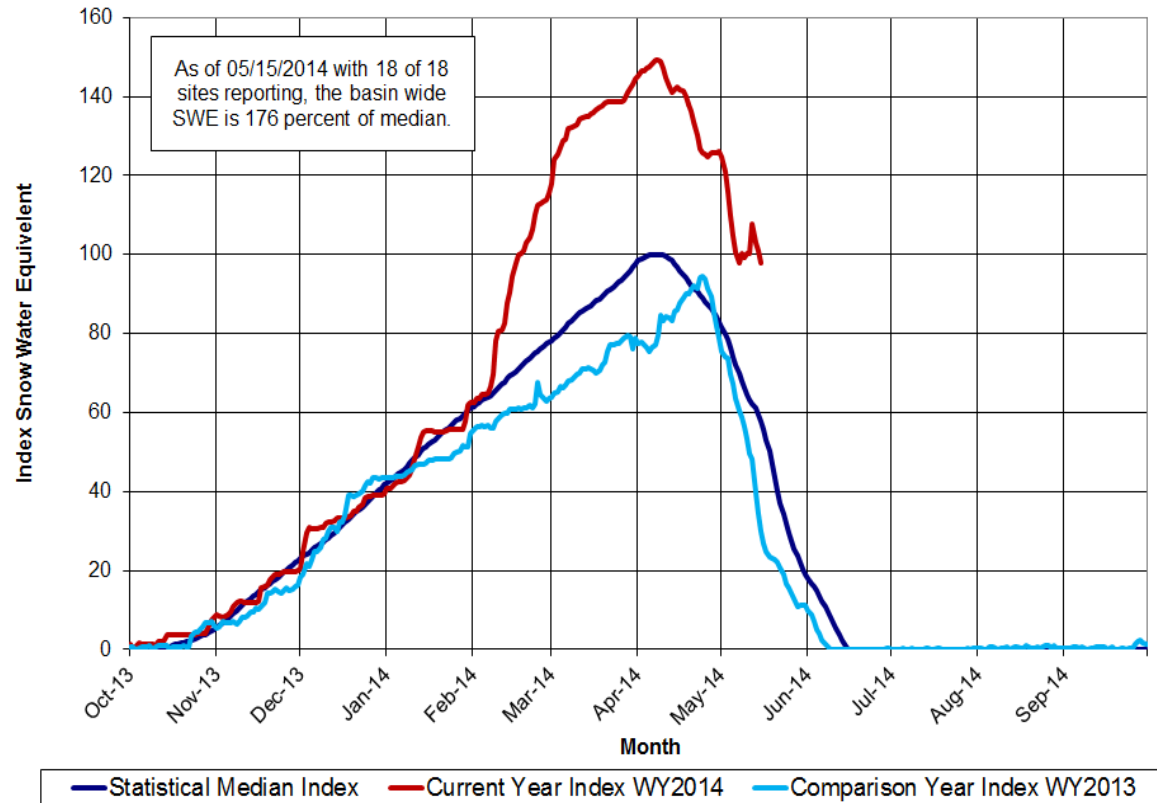


Provisional Data
Subject to Revision



The snow water equivalent percent of normal represents the current snow water equivalent found at selected SNOTEL sites in or near the basin compared to the average value for those sites on this day. Data based on the first reading of the day (typically 00:00).

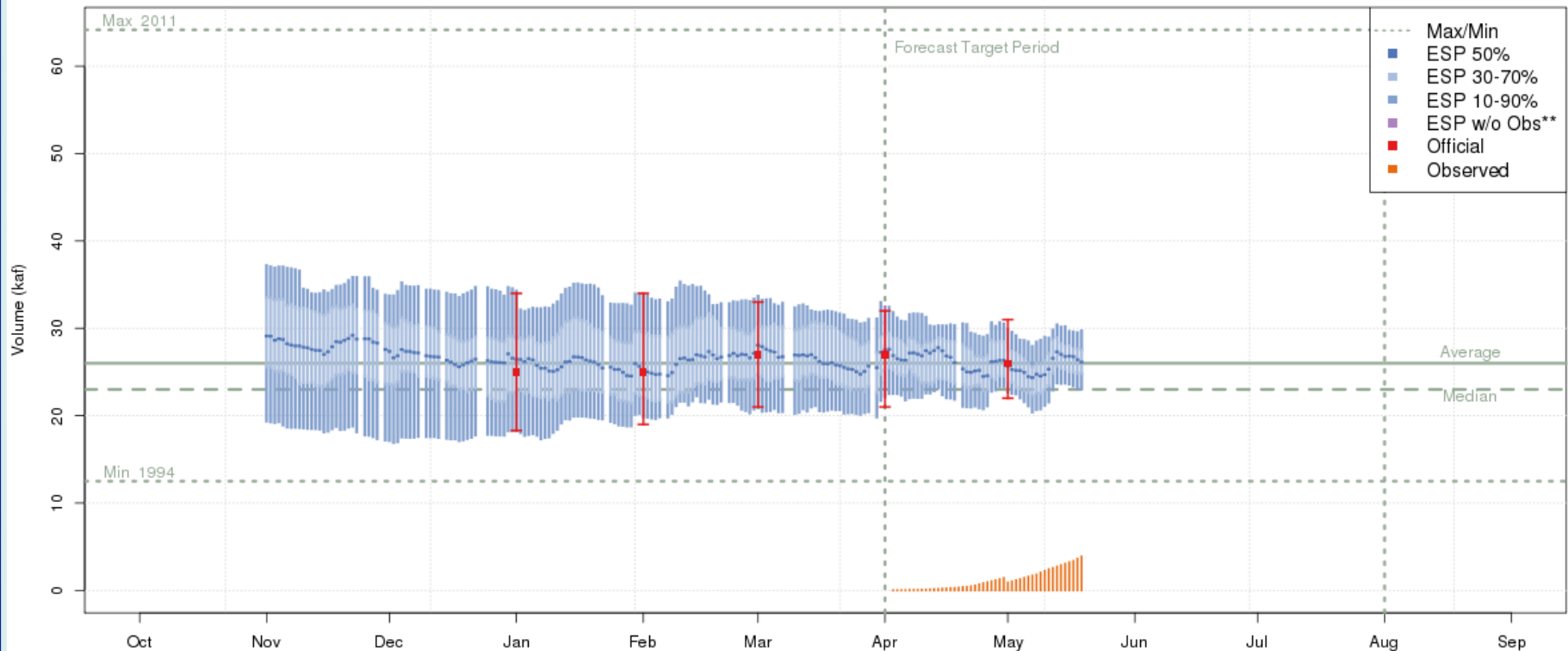
Upper Green River Basin Snotel Tracking
Aggregate of 18 Snotel Sites above Flaming Gorge Reservoir



Data Provided by the Natural Resource Conservation Service

Runoff Forecast

Ef Smiths Fork - Stateline Res- Robertson-nr (SLRW4) Apr-Jul 2014 Runoff Forecast (No Precip Forecast Included)
 2014-05-01 Official 50% Forecast: 26 kaf (100% of average)



Plot Created 2014-05-19 14:29:49, Lastest ESP Run from 2014-05-19, NOAA / NWS / CBRFC
 The latest (2014-05-19) 50% ESP forecast (26 kaf) changed -1 % from previous day and 2 % from May 1
 **These ESP forecasts do not include observed and are not total runoff.

Big Sandy Inflow Forecast =
 Median 100% avg

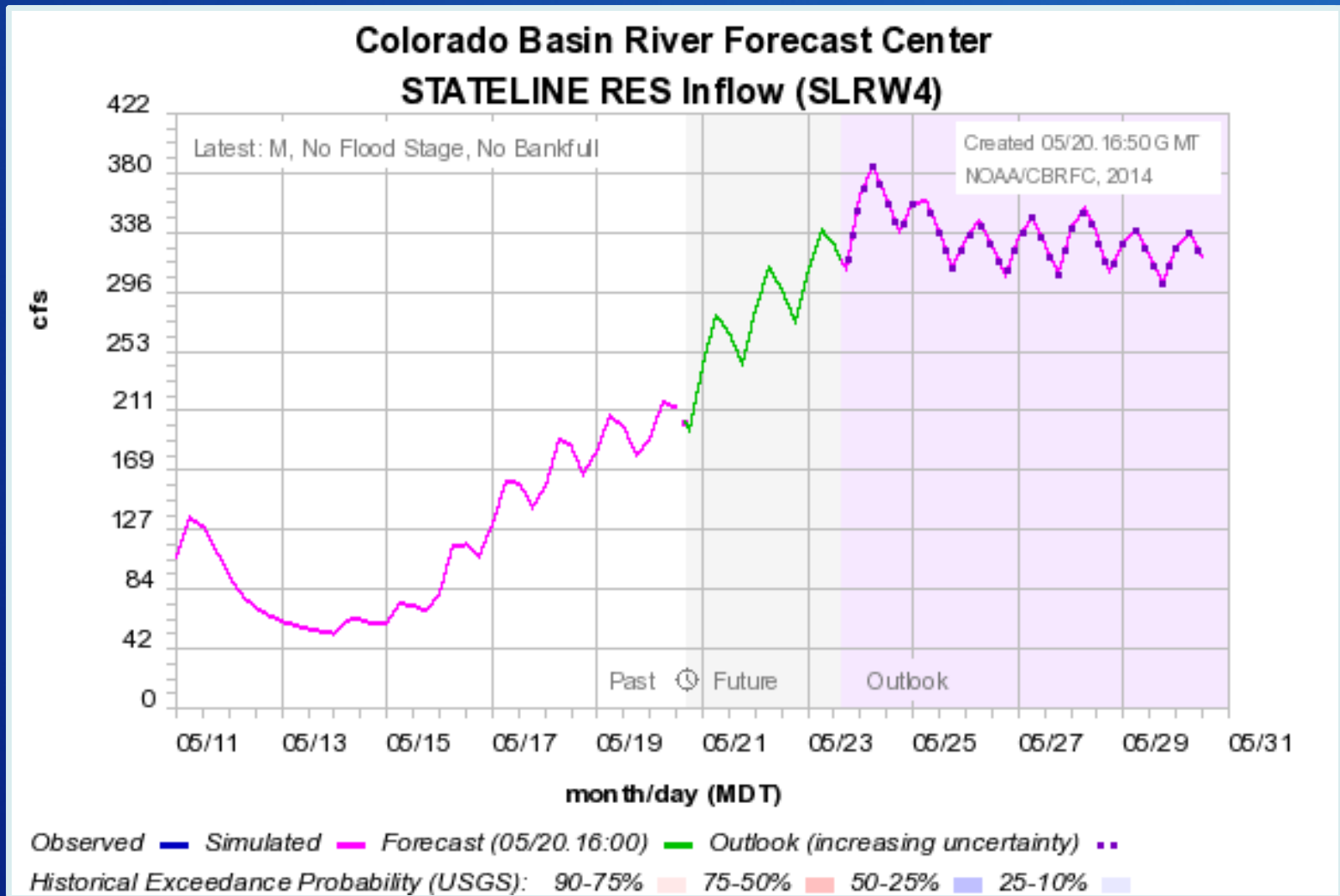
RECLAMATION

Reservoir Fill Status



	Reservoir	Volume Remaining (KAF)	May 1 st (Apr-July) Runoff Forecast (KAF)	Runoff Remaining (KAF)	Inflow / Vol Remaining (ratio)	Fill Yes/No/?
Upper Green	Big Sandy	19	55	49	2.6	?
	Meeks Cabin	2.3	90	69	30	yes
	Stateline	1.7	26	21	13	yes

Reservoir Inflows



Questions?



Lee Traynham

ltraynham@usbr.gov

(801) 379-1196

RECLAMATION