

RECLAMATION

Managing Water in the West

Green River Basin Advisory Group

Hydrology and Forecasted
Operations

May 20, 2014



U.S. Department of the Interior
Bureau of Reclamation

Fontenelle and FG Reservoir Status

as of May 19, 2014

Fontenelle

Elevation	6475.53 ft
Live Capacity	345,000 AF
<u>Capacity on 5/19/14</u>	<u>154,268 AF</u> (42% full)
Five Day Average Inflow	2,551 cfs
Current Release on 5/19/14	4,500 cfs

Flaming Gorge

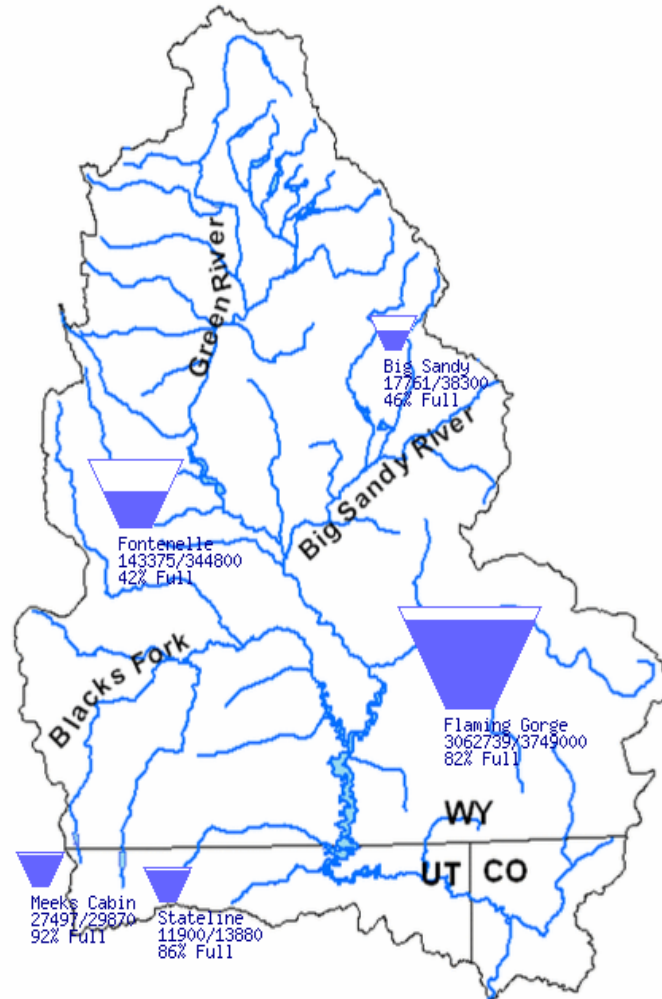
Elevation	6022.33 ft
Live Capacity	3.752 MAF
<u>Capacity on 5/19/14</u>	<u>3.039 MAF</u> (82% full)
Five Day Average Inflow	5,300 cfs
Current Release on 5/19/14	820 cfs

RECLAMATION

GRBAG

Data Current as of:
05/18/2014

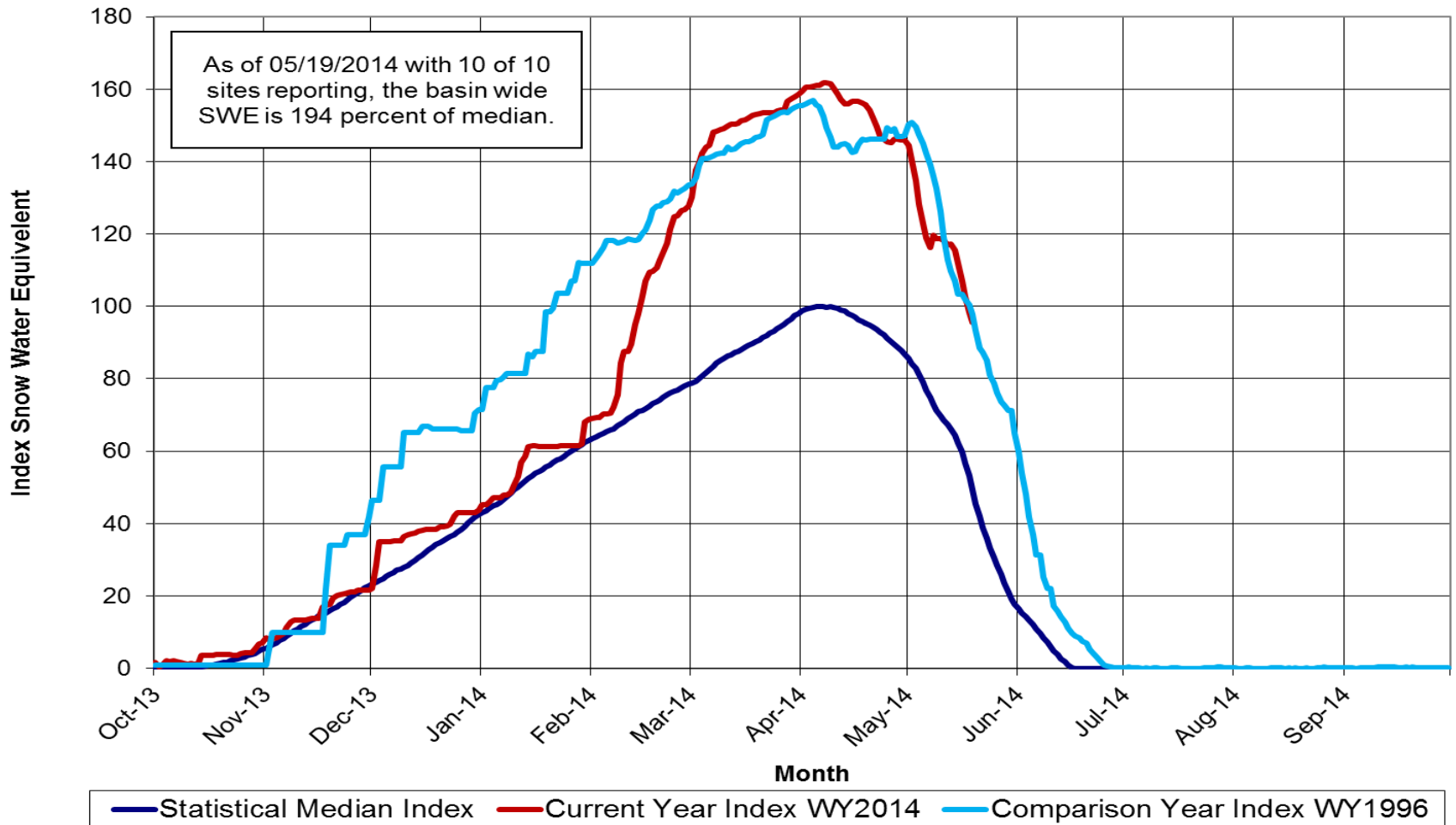
Upper Green River Basin



RECLAMATION

GRBAG

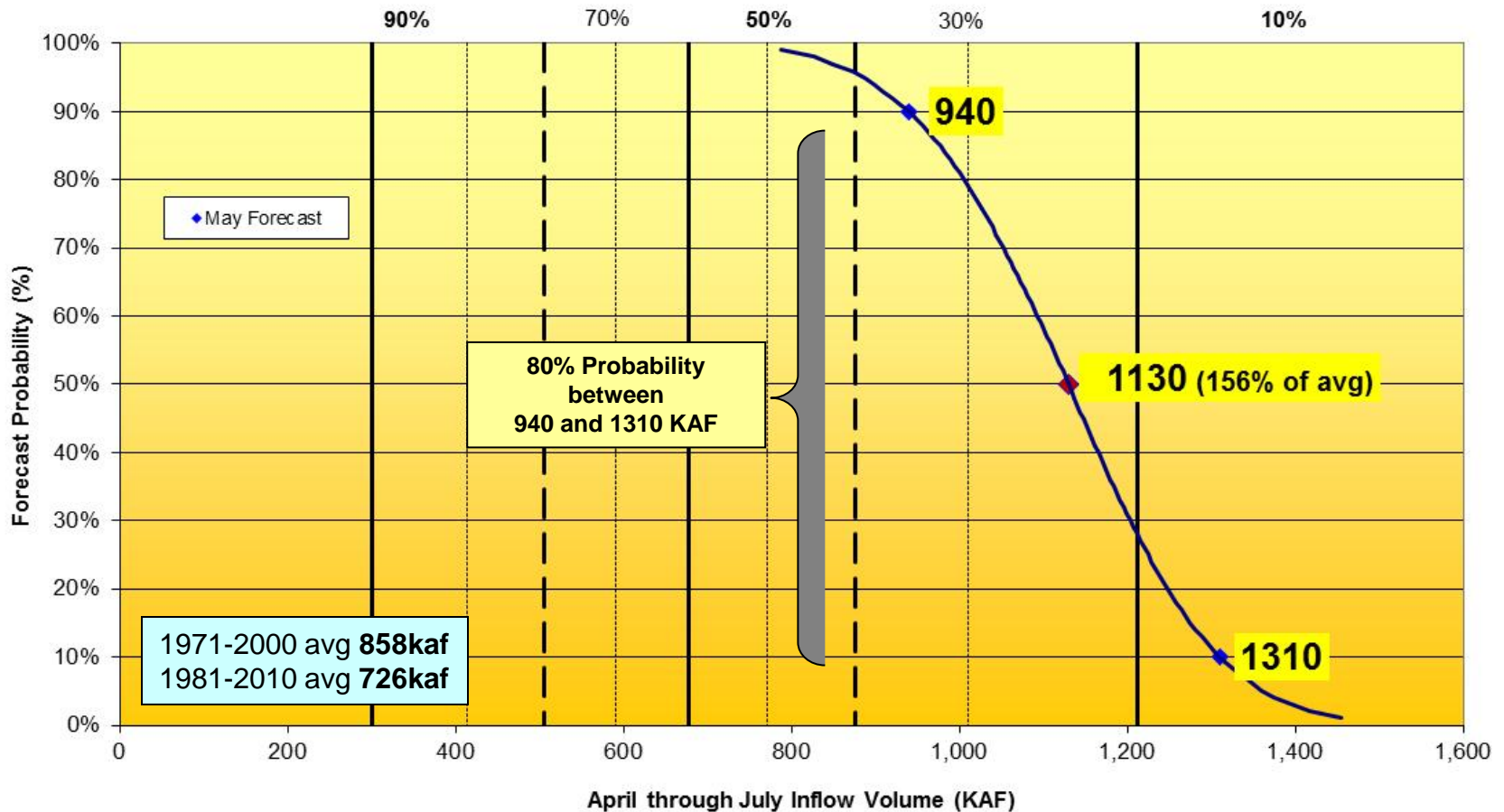
Upper Green River Basin Snotel Tracking Aggregate of 13 Snotel Sites above Fontenelle Reservoir



Data Provided by the Natural Resource Conservation Service

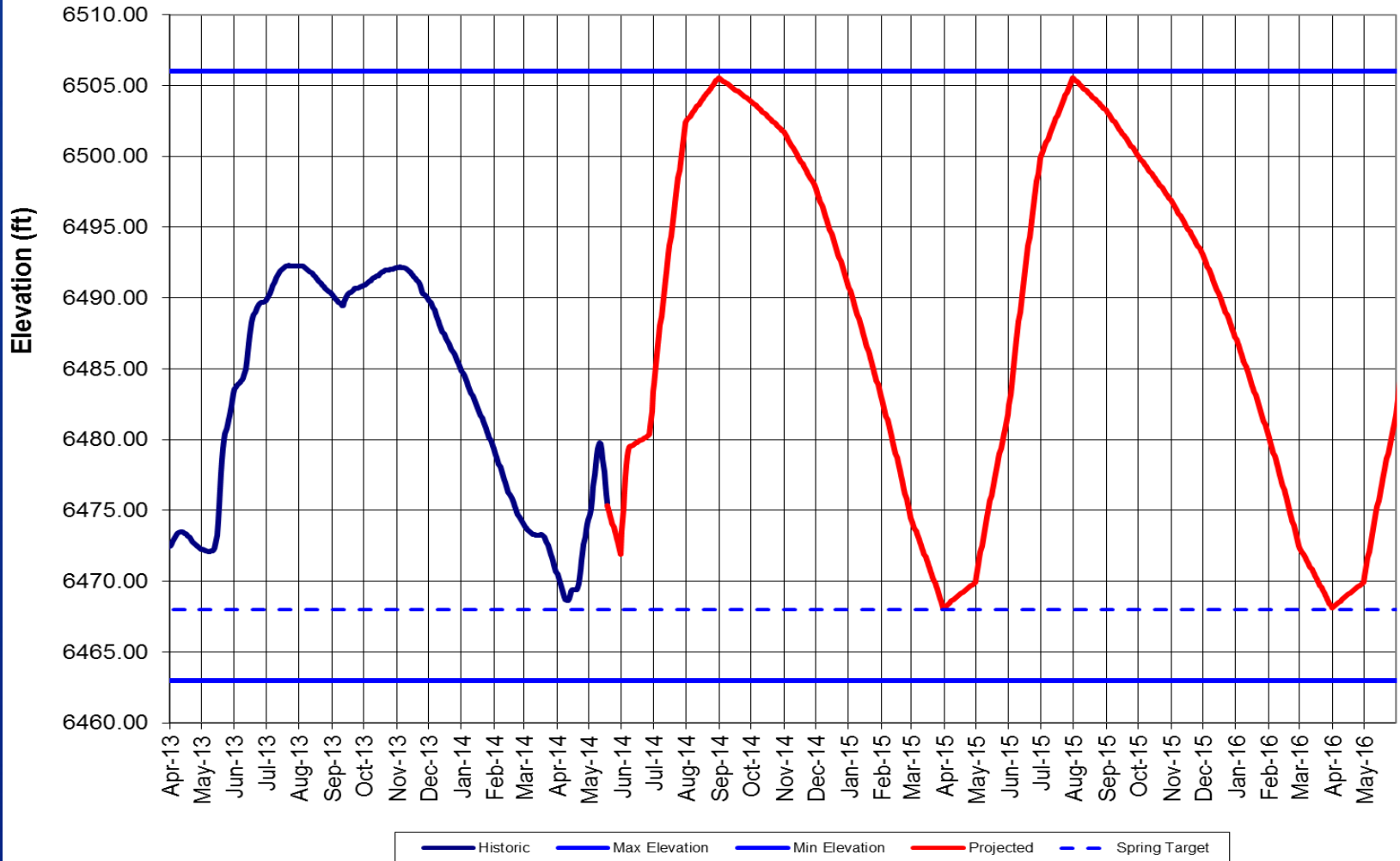
Fontenelle May Midmonth Forecast

Fontenelle Reservoir
April - July Forecasted Inflow
Related to Exceedance Percentages for Historic Period (1981-2010)



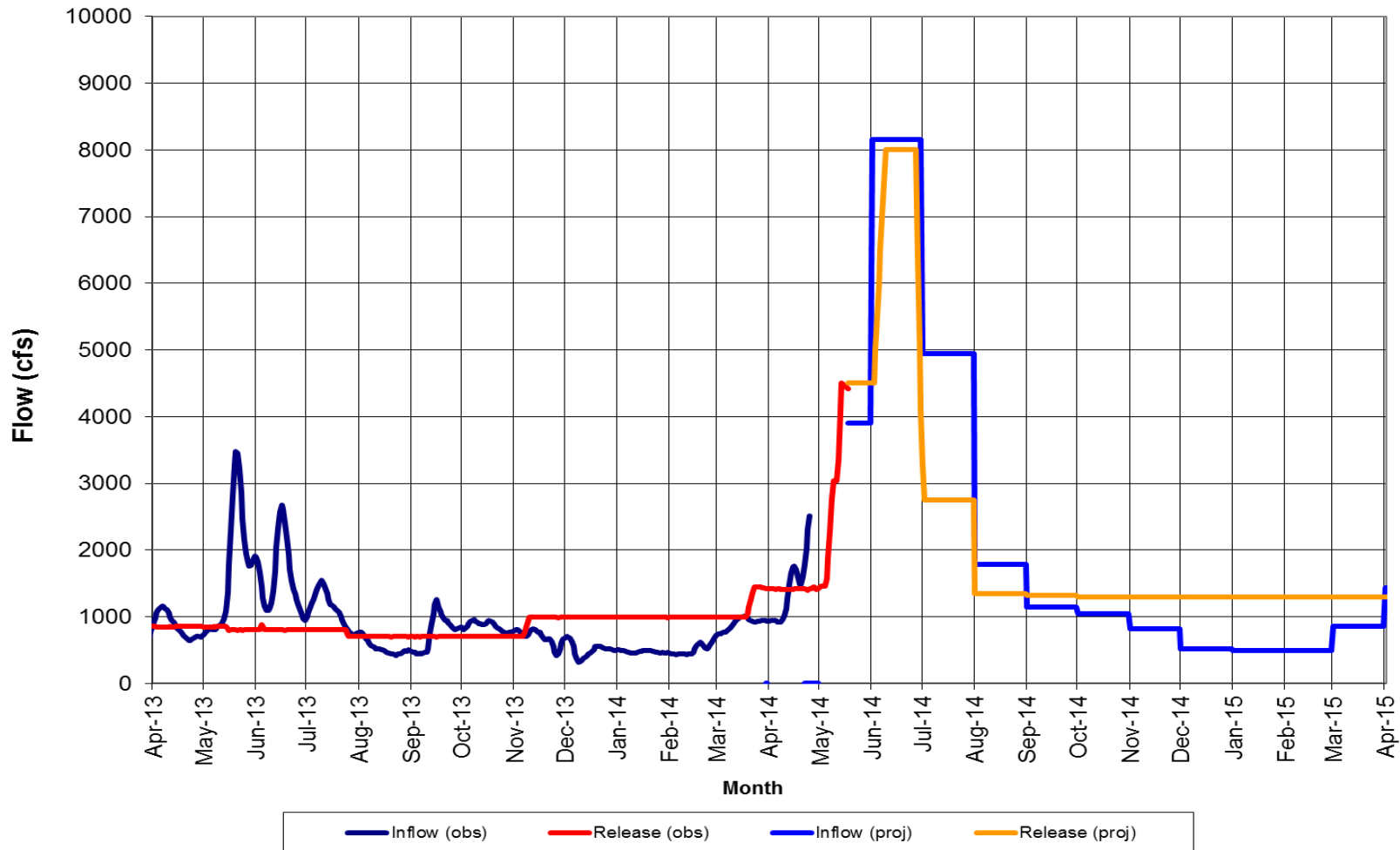
Fontenelle Forecasted Elevations

Fontenelle Elevations
2014 April Final Forecast Most Probable Operations



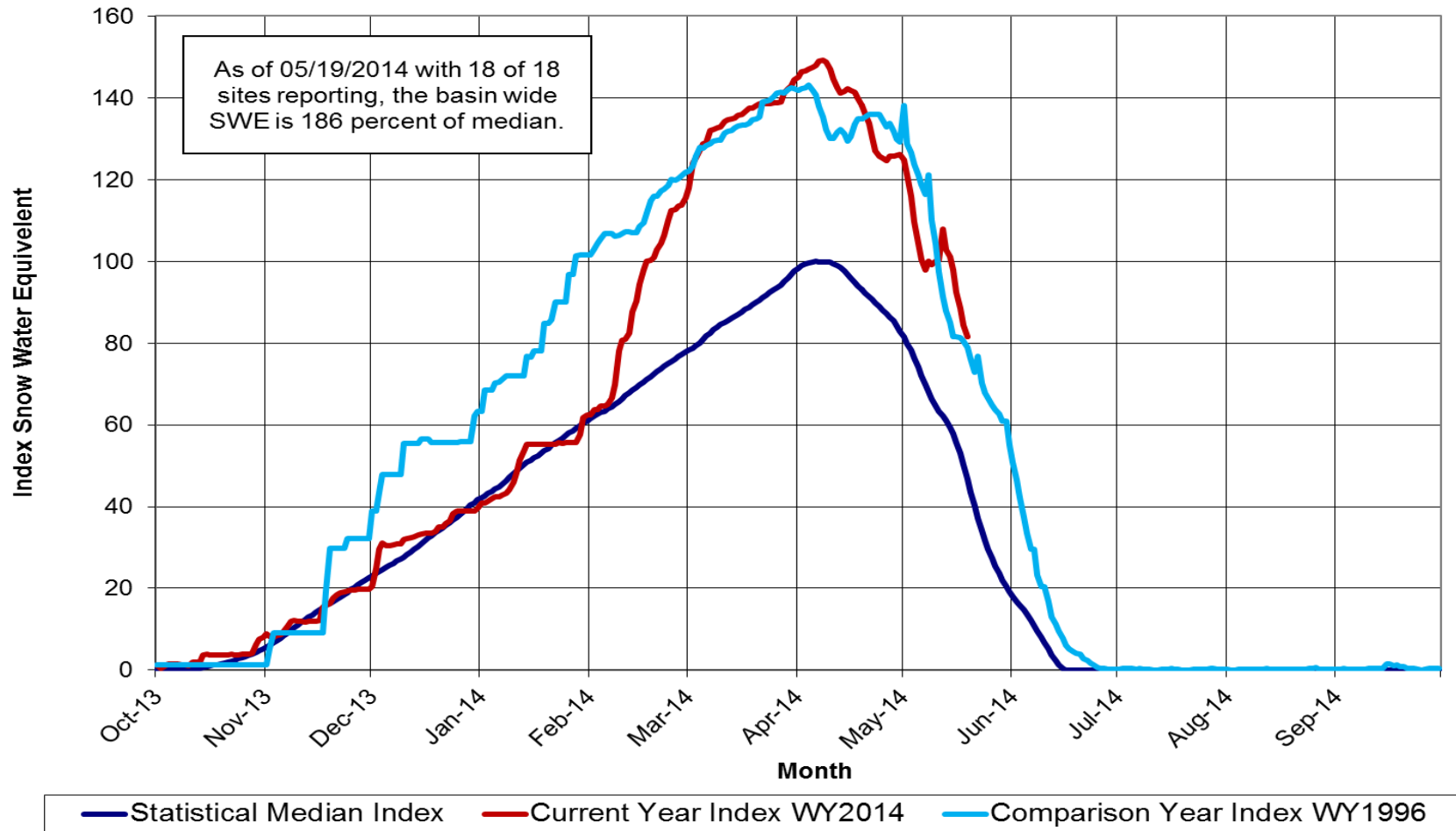
Fontenelle Forecasted Elevations

Fontenelle Inflow and Release
2014 Most Probable Operations (April Final Forecast)



Flaming Gorge Working Group

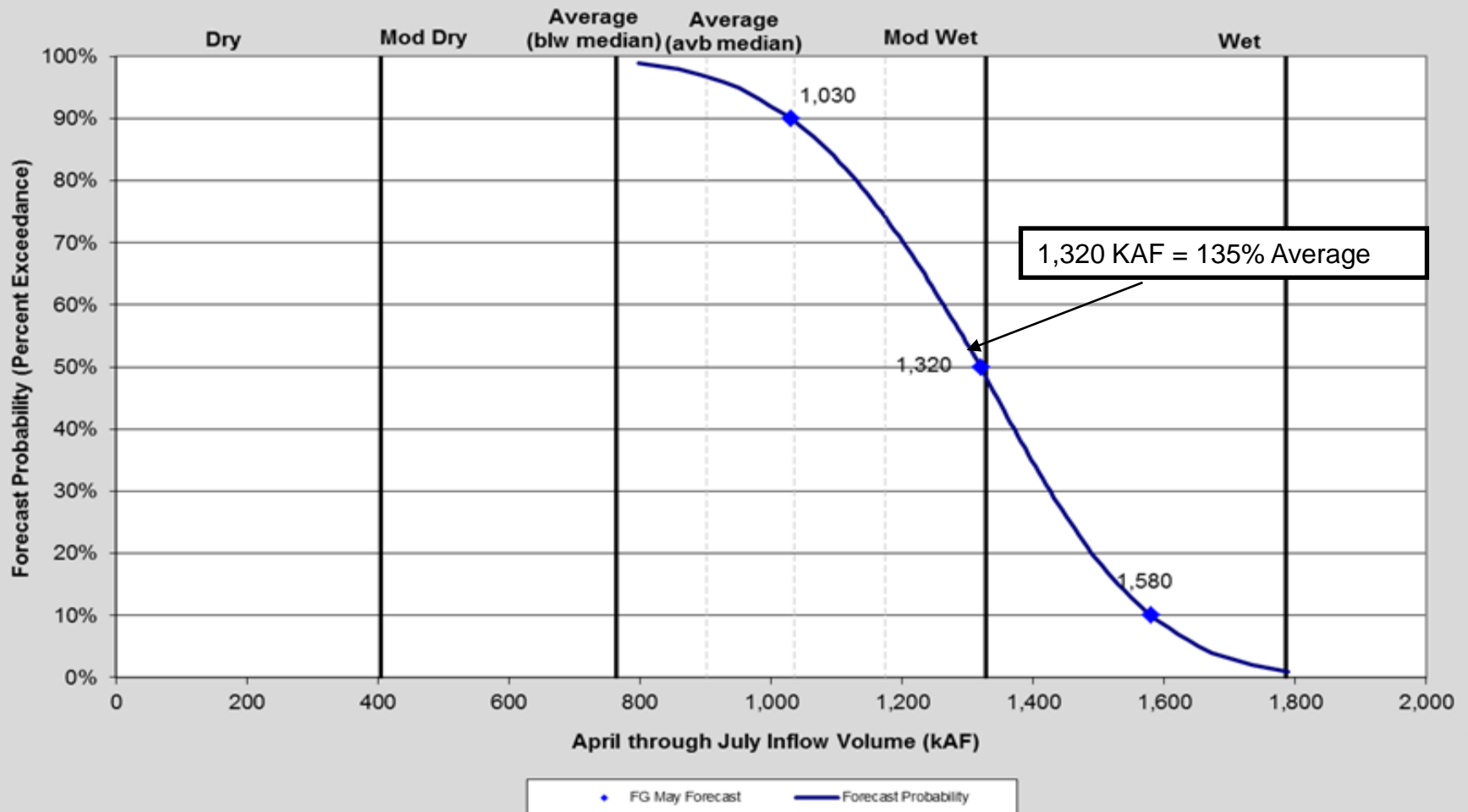
Upper Green River Basin Snotel Tracking
Aggregate of 18 Snotel Sites above Flaming Gorge Reservoir



Data Provided by the Natural Resource Conservation Service

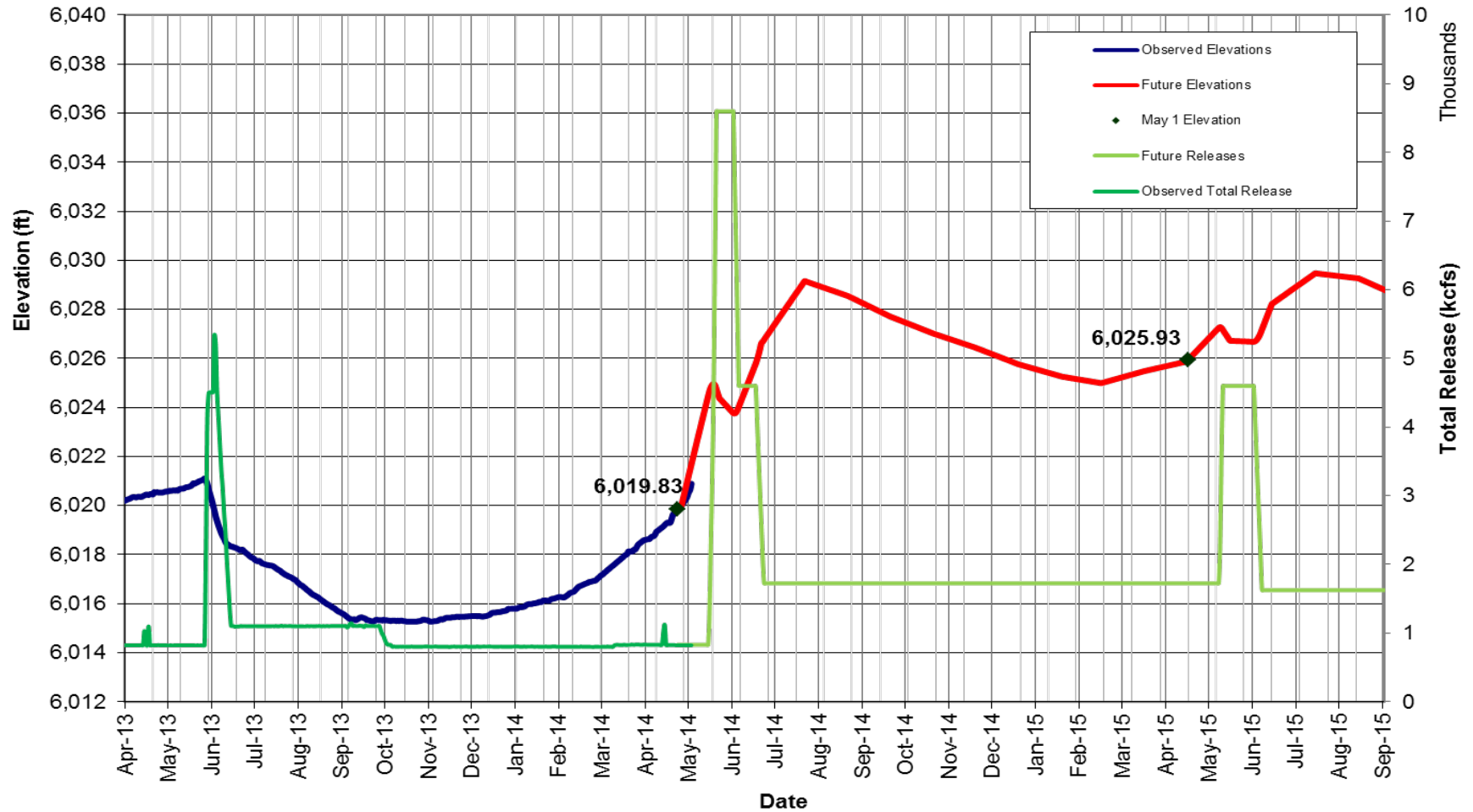
GRBAG

Flaming Gorge Reservoir
April through July Historic Inflow (1963-2013)
Related to Flow Recommendation Percent Exceedances



Flaming Gorge Working Group

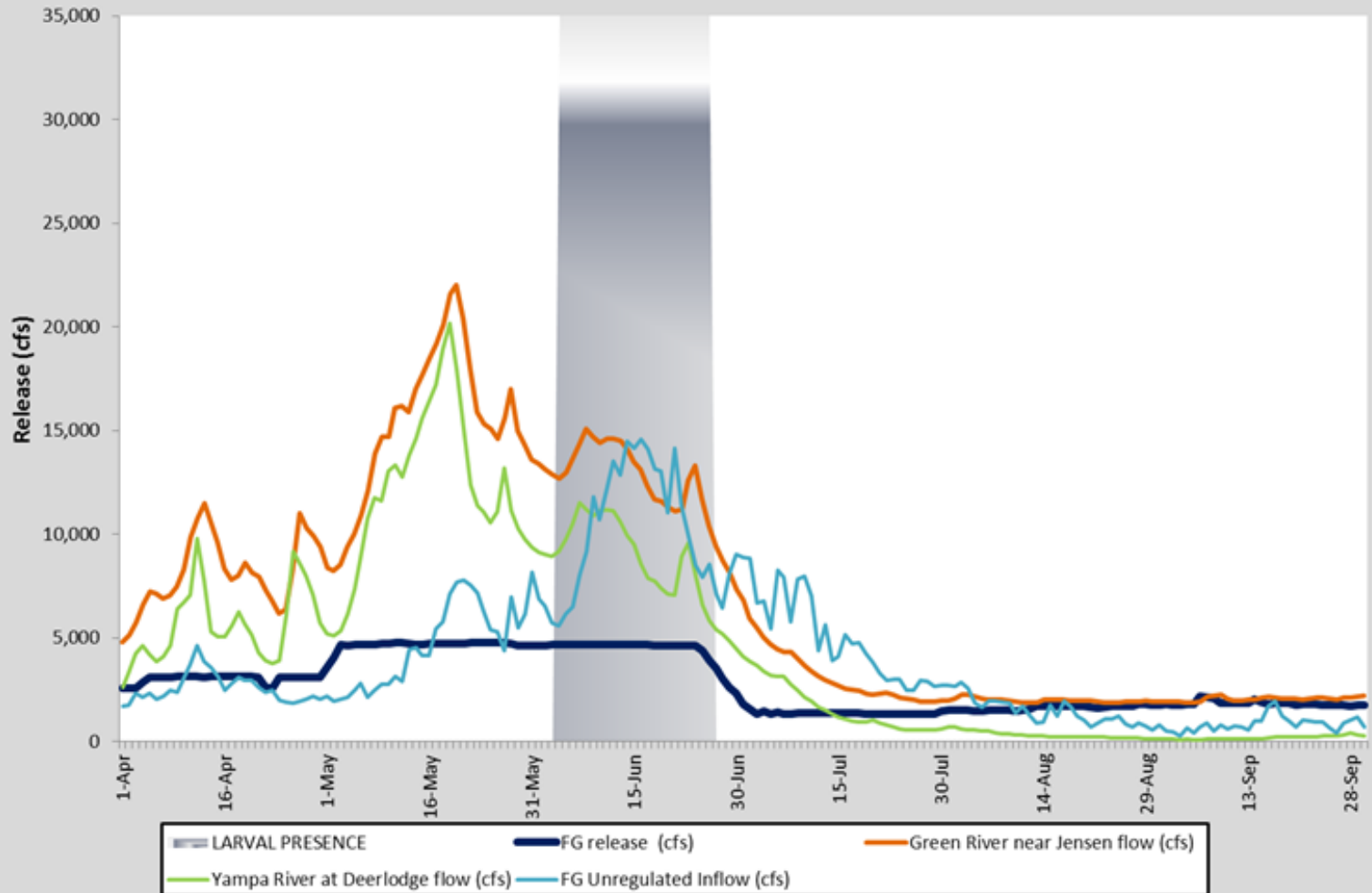
Flaming Gorge Operations WY2014-2015
Most Probable Operations May Final Forecast



*This is a projection based on historic hydrographs. Actual days of flows in 2014 are unknown.

GRBAG

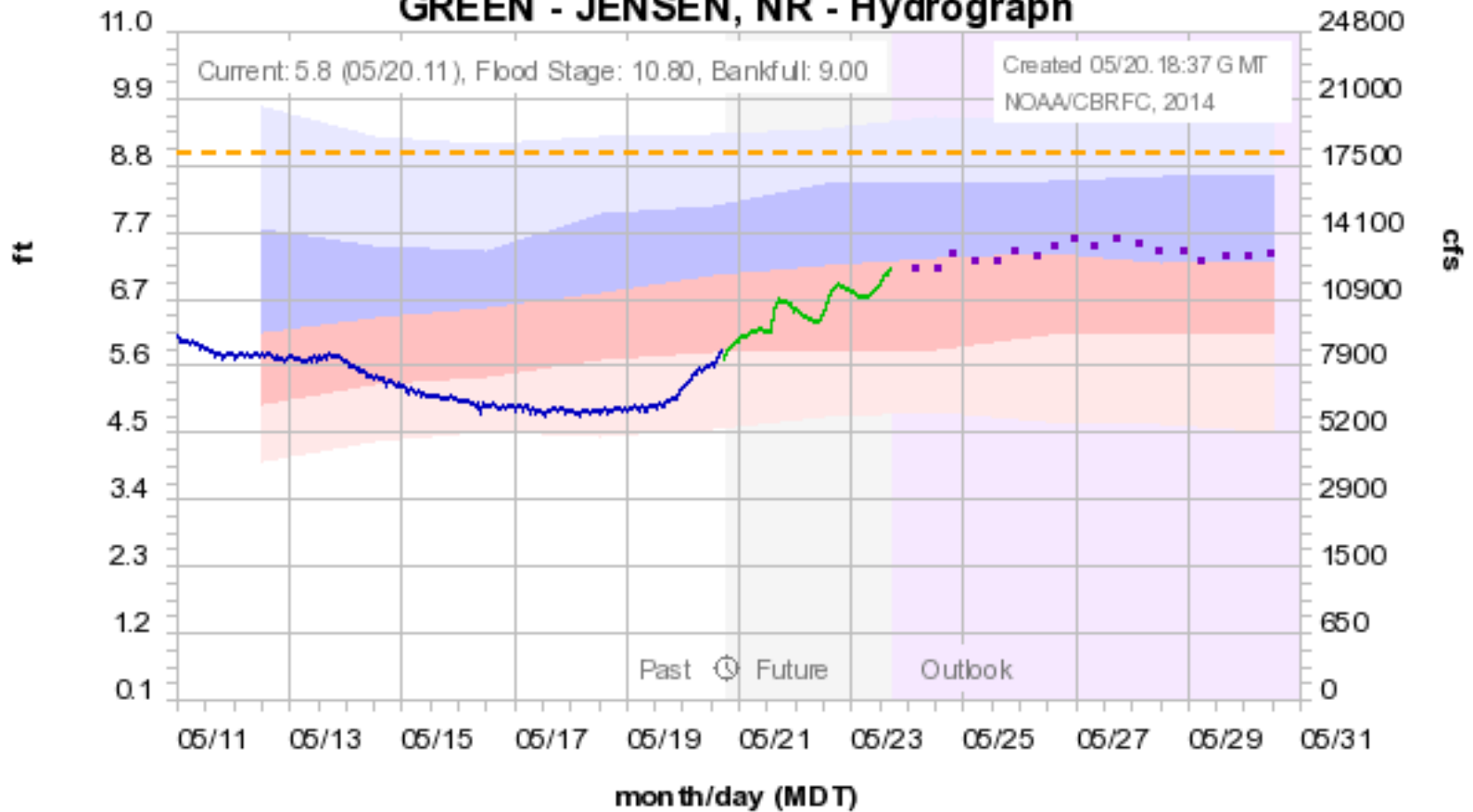
FG Release and Green River Flows
April-July 1996



RECLAMATION

GRBAG

Colorado Basin River Forecast Center GREEN - JENSEN, NR - Hydrograph



Observed — Forecast (05/20.16:00) — Outlook (increasing uncertainty) - - - Bankfull 9.00 —
Historical Exceedance Probability (USGS): 90-75% 75-50% 50-25% 25-10%

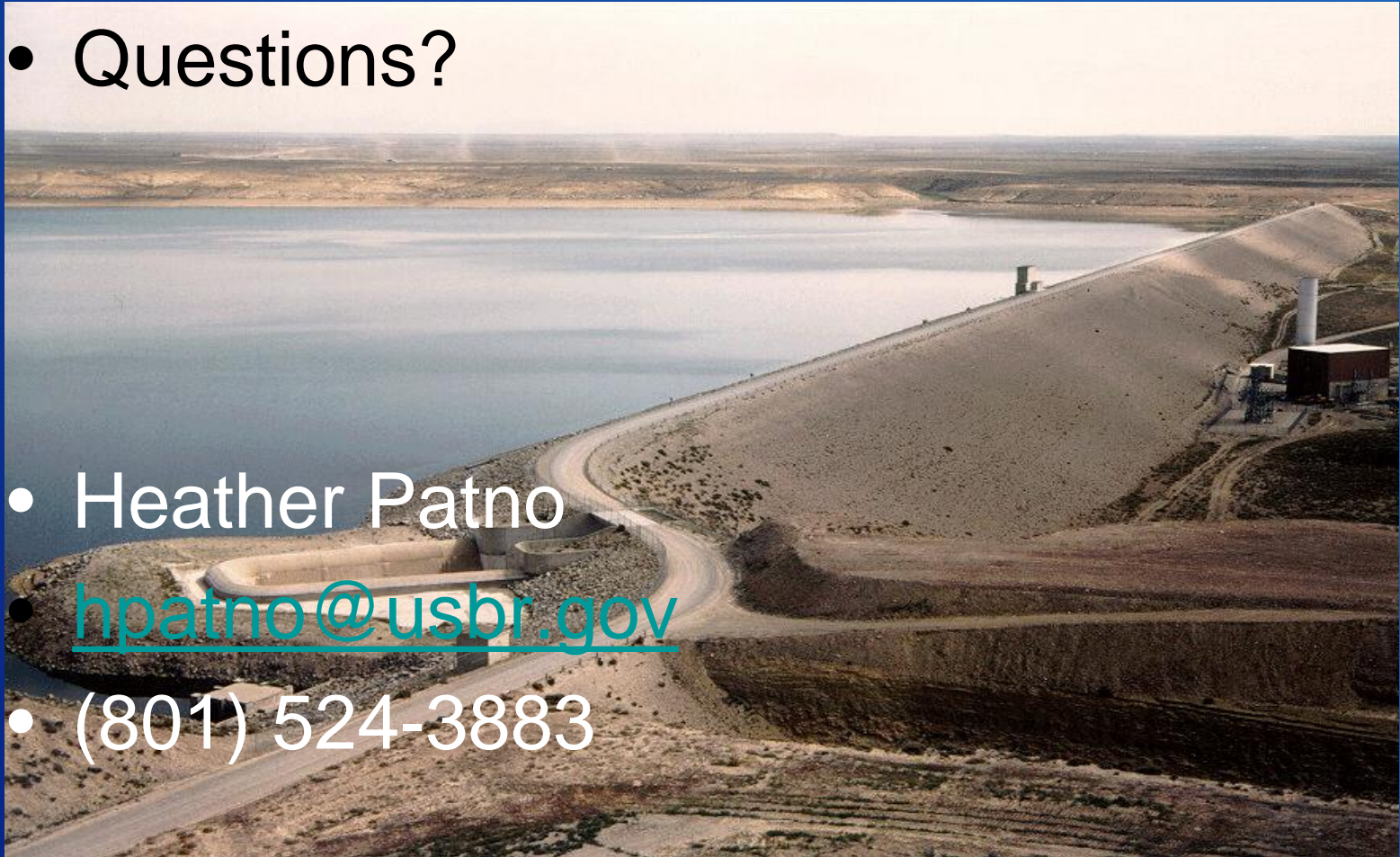
RECLAMATION

Green River Basin Advisory Group

May 20, 2014

- Questions?

- Heather Patno
- hpatno@usbr.gov
- (801) 524-3883



RECLAMATION