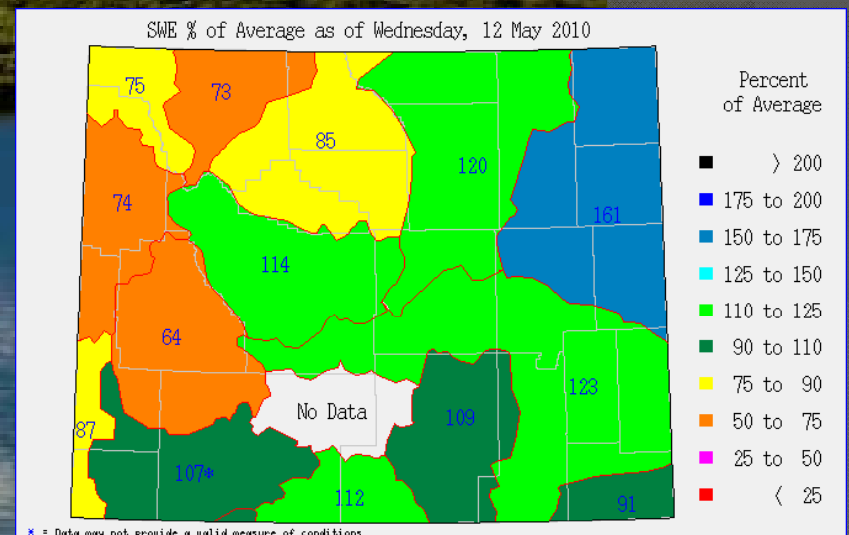
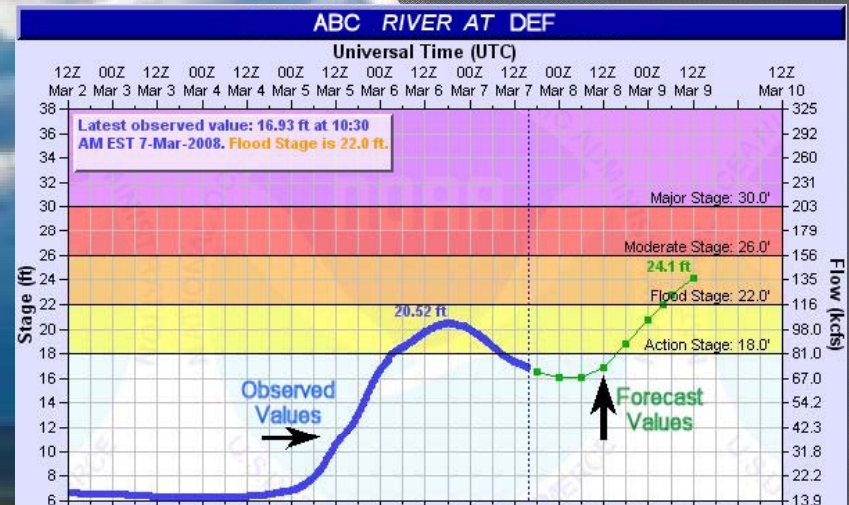
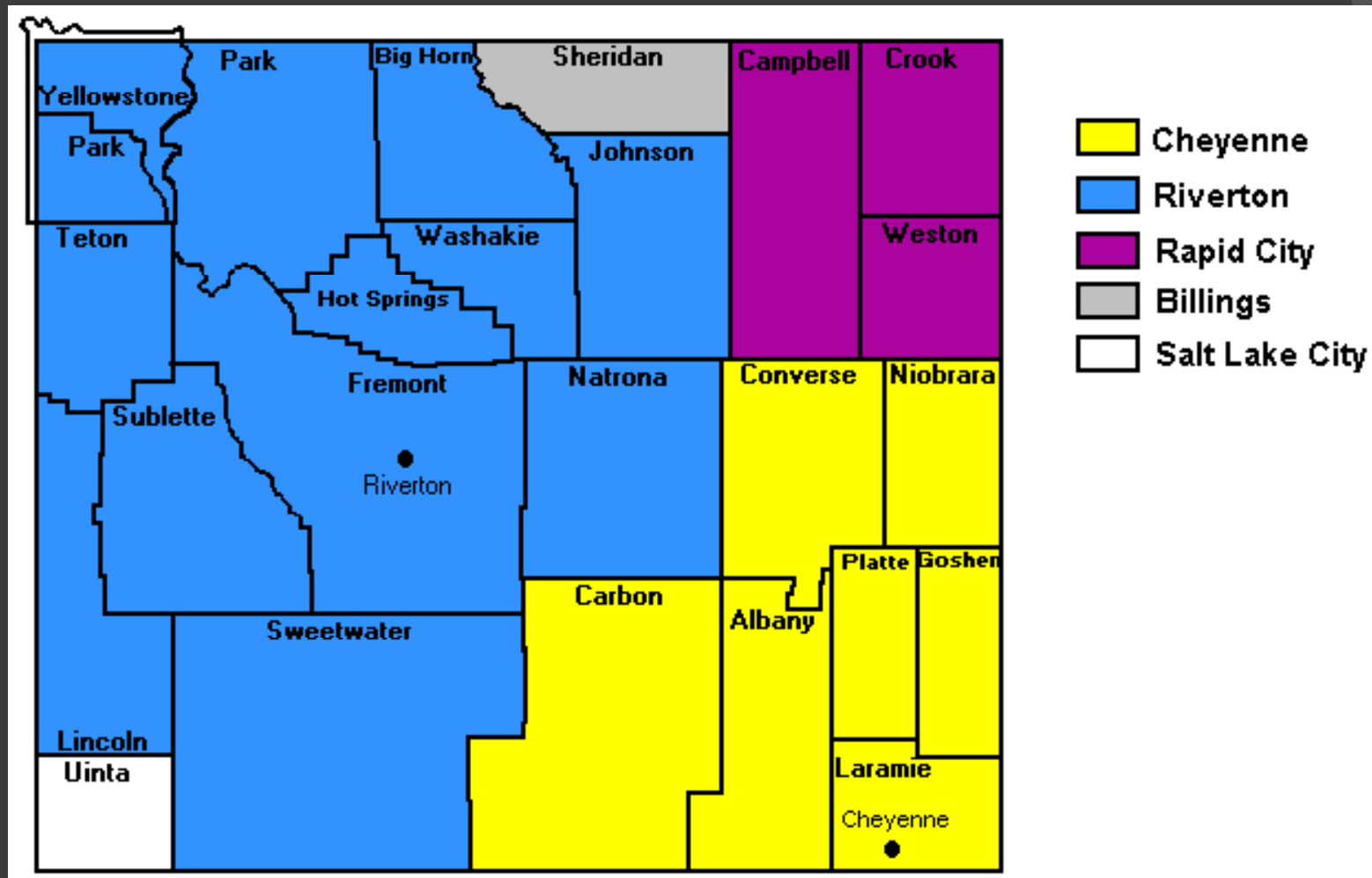


Wyoming NWS Weather Forecast Offices

WEATHER SERVICES FOR HYDROLOGIC OPERATORS



National Weather Service



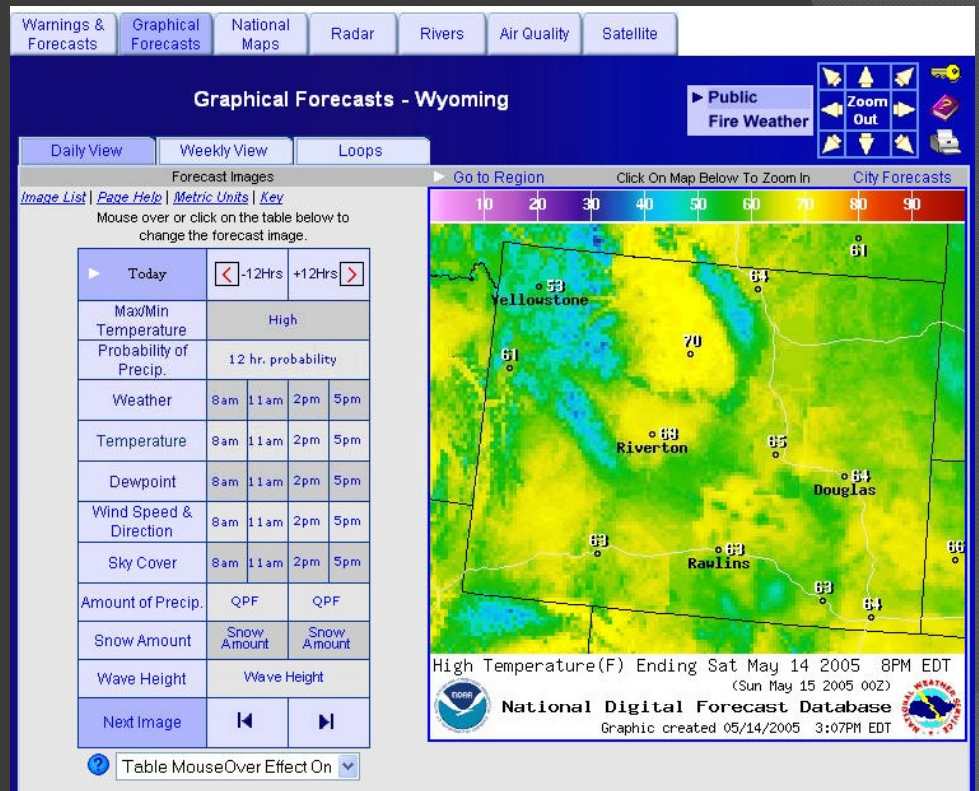
River Forecast Centers

- ◎ 13 Centers Nationwide
- ◎ 3 Serving Wyoming
 - Missouri Basin RFC
 - Colorado Basin RFC
 - Northwest RFC



High Resolution Digital Forecasts @ weather.gov

- The National Weather Service produces digital forecasts for all 50 states
- Information updated as often as hourly
- Forecast produced for-
 - Precipitation
 - Temperature
 - Dewpoint
 - Wind Speed & Direction
 - Snowfall



www.weather.gov/riverton

Your Forecast is Just a Click Away

- Local Forecasts
- Watches & Warnings
- Water and Drought
- Wyoming Webcams
- Road and Travel
- Climate Information

The screenshot shows the National Weather Service website for the Western and Central Wyoming office. The page features a navigation menu with links for Home, Site Map, News, Organization, and a search bar. A sidebar on the left lists various services such as Local Forecasts, Watches & Warnings, and Climate Information. The main content area displays the 'Top News of the Day' with headlines like '2010 Spotter Training Schedule' and 'Significant Snowfall Will Continue Wednesday / Snowfall Totals'. Below the news is a map of Wyoming with color-coded regions indicating weather conditions. A 'Latest Conditions in Riverton, WY' section shows the current temperature as 32°F (0°C) with snow fog, and a 'Choose Your Front Page City' dropdown menu. At the bottom, there are links for 'Weather Story', 'Radar', 'Satellite', and 'Weather Map', along with a 'Driving?' link for road conditions.

www.weather.gov/riverton

Forecasts


- 7-Day Forecasts
- Current Conditions
- Local Links
 - Webcams
 - Road Report
 - Forecast Discussion

Your National Weather Service forecast

Detailed Point Forecast [Move Up]

Click Map for Forecast [Disclaimer](#)

Map Satellite Terrain



Map data ©2010 Google - [Terms of Use](#)

Requested Location Forecast Area
Lat/Lon: 43.02°N 108.41°W Elevation: 5002 ft

[XML](#)

Saturday Night: A slight chance of rain showers before midnight, then a slight chance of snow showers. Mostly cloudy, with a low around 34. West southwest wind 13 to 16 mph decreasing to between 5 and 8 mph. Chance of precipitation is 20%.

Sunday: A slight chance of rain and snow showers before noon, then a slight chance of rain showers. Partly cloudy, with a high near 56. West northwest wind around 7 mph becoming east northeast. Chance of precipitation is 20%.

Sunday Night: A 40 percent chance of showers. Mostly cloudy, with a low around 41.

Monday: A 30 percent chance of showers and thunderstorms. Mostly cloudy, with a high near 58.

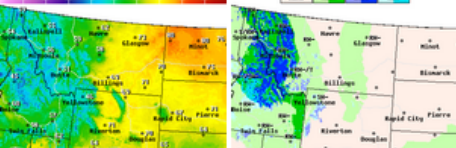
Monday Night: A slight chance of rain and snow showers. Some thunder is also possible. Partly cloudy, with a low around 35. Chance of precipitation is 20%.

Tuesday: Mostly sunny, with a high near 61.

Tuesday Night: Partly cloudy, with a low around 38.

Wednesday: A slight chance of showers and thunderstorms. Partly cloudy, with a high near 67.

National Digital Forecast Database

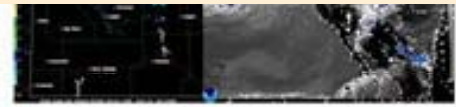


Tuesday: A slight chance of showers, with thunderstorms also possible after noon. Partly cloudy, with a high around 67. Chance of precipitation is 20%.

Tuesday Night: Partly cloudy, with a low around 38.

Additional Forecasts & Information

- Zone Area Forecast for Wind River Basin, WY
- Forecast Discussion
- Printable Forecast
- Text Only Forecast
- Hourly Weather Graph
- Tabular Forecast
- Quick Forecast
- International System of Units
- About Point Forecasts

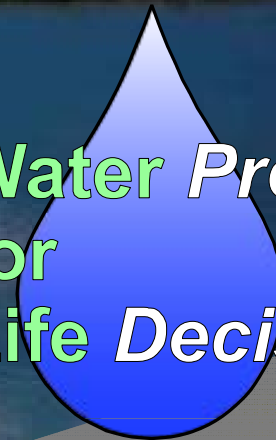


NWS Weather Forecast Office Riverton

ADVANCED
HYDROLOGIC
PREDICTION
SYSTEM

AHPS

*Water Predictions
for
Life Decisions*



AHPS

◎ *AHPS Better Answers the Following Questions:*

- How high will the river rise?
- When will the river reach its peak?
- Where will the flooding occur?
- How long will the flood last?
- How long will the drought continue?
- How certain is the forecast?

Observing Platforms



Geo-Stationary Satellite



Automated Rain Gages



Cooperative Observers



Automated Surface Observations



Stream Gages



SNOTEL

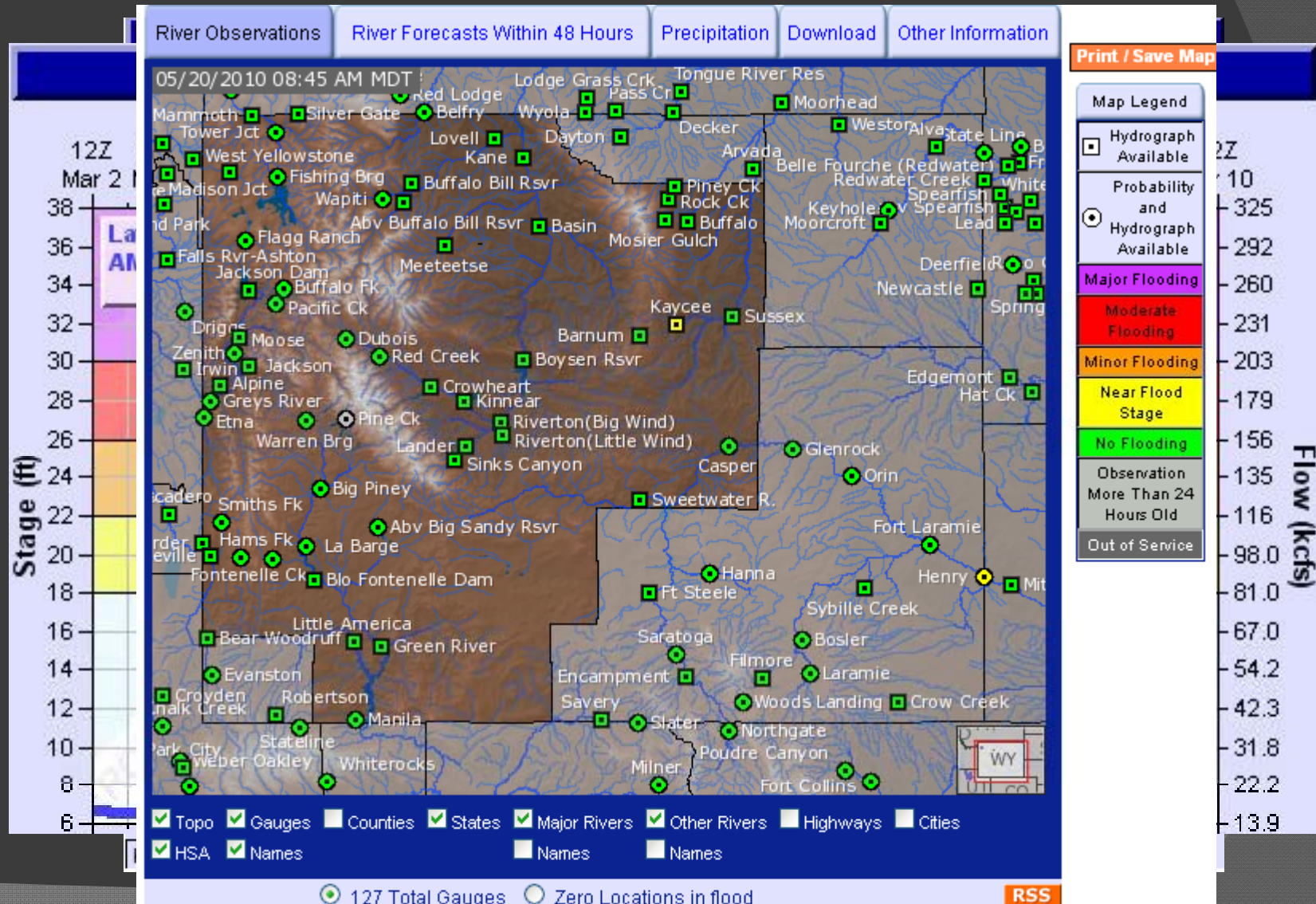


Remote Sensing



Doppler Radars

Choosing Your Forecast

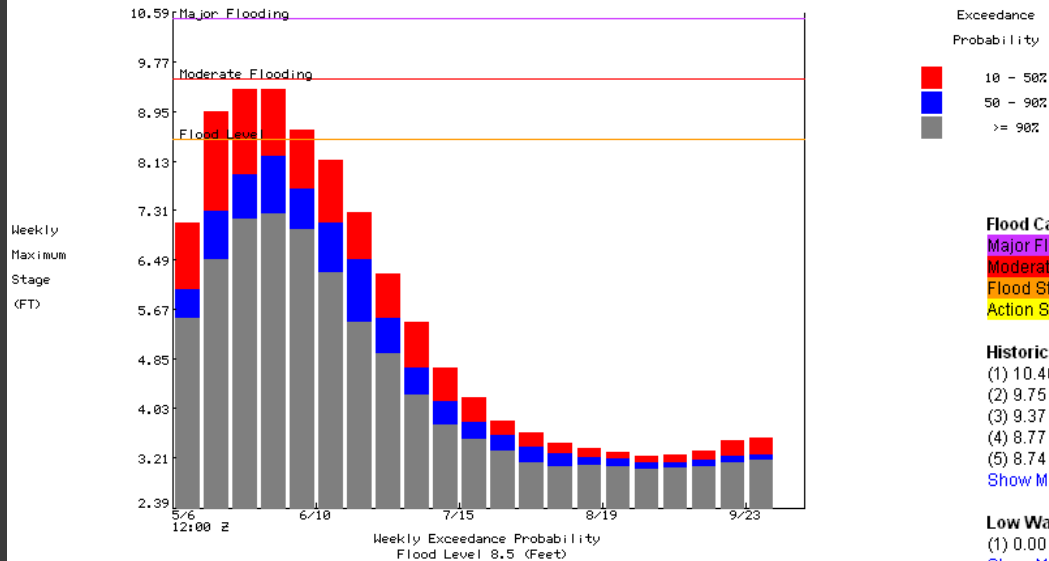


What information is on AHPS?

[Hydrograph](#)
[River at a Glance](#)
[Download](#)
[Weekly Chance of Exceeding Levels](#)
[Chance of Exceeding Levels During Entire Period](#)

NORTH PLATTE RIVER AT SARATOGA

1 Week Chances of Exceeding River Levels on the NORTH PLATTE R +338 at SARATOGA NY
 Latitude: 41.4 Longitude: 106.8
 Forecast for the period 5/6/2010 - 9/30/2010
 This is a conditional simulation based on the current conditions as of 5/1/2010



----- Graph Created (8:46AM May 20, 2010) -----
 ● Observed
 ■ Forecast (issued 8:54AM May 19)

SRAW4(plotting HGIRG) "Gage 0" Datum: 6772.69'

[← Upstream Gauge](#)
[Downstream Gauge →](#)

Flood Categories (in feet)

- Major Flood Stage: 10.5
- Moderate Flood Stage: 9.5
- Flood Stage: 8.5
- Action Stage: 7.5

Historical Crests

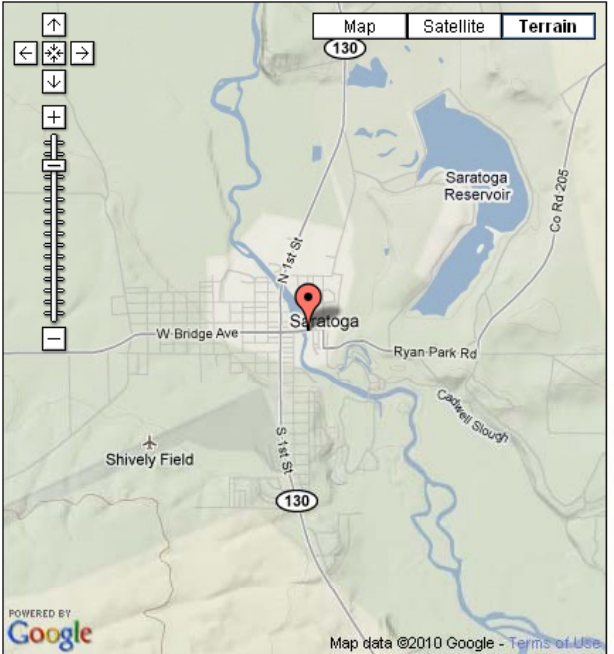
- 10.40 ft on 06/20/1917
- 9.75 ft on 06/14/1957
- 9.37 ft on 06/07/1952
- 8.77 ft on 06/05/1997
- 8.74 ft on 06/14/1965

[Show More Historical Crests](#)

Low Water Records

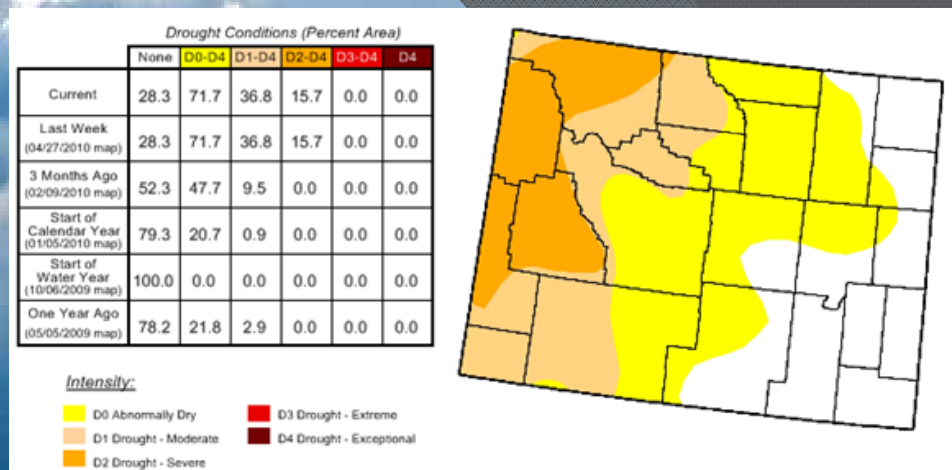
- 0.00 ft on 01/06/1970

[Show More Low Water Records](#)



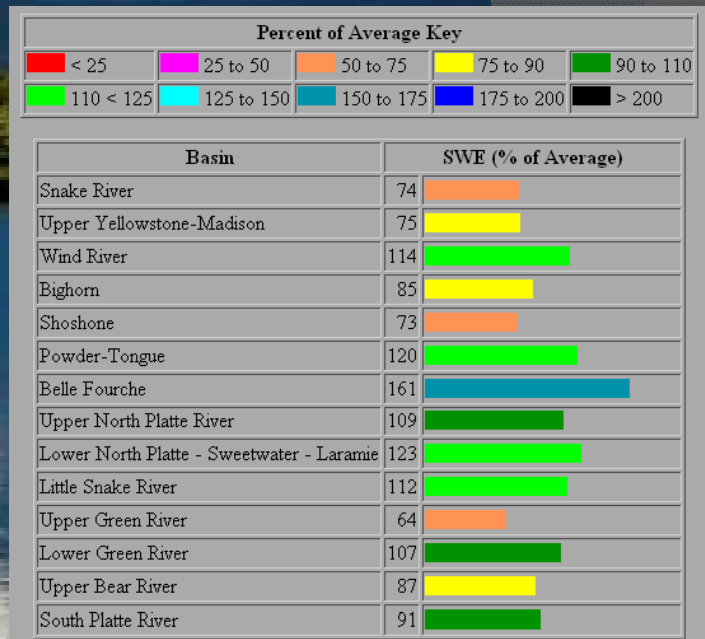
Legend
 Gauge Location

[Disclaimer](#)



Wyoming NWS Weather Forecast Offices

ONLINE SNOW, WATER, AND DROUGHT INFORMATION



One Stop Shopping

<http://www.crh.noaa.gov/riw/hydro/drought.php>

Drought Monitors and Assessments	
NOAA Wyoming Drought Monitor	NOAA Drought Assessment - US
State Climatologist's Wyoming Drought Page	State Climatologist's Wyoming Drought Status (by county)
Palmer Drought Severity Index (PDSI)	Wyoming Drought Watch - USGS
About the PDSI	National Drought Mitigation Center

Snowpack and Precipitation Data	
NRCS Snow Precipitation Update	Interactive Precipitation Summary Graphics
Percent of Average SWE by Basin (Graph)	Percent of Average SWE by Basin (Map)
Percent of Average SWE (By Individual Station)	Wyoming SNOTEL Data
SNOTEL Water Year Graph (By Individual Station)	Seasonal Precipitation Maps
NRCS Snow Survey	NOHRSC Regional Snow Analyses--Central Rockies

Streamflow and Reservoir Data	
NWS Riverton Hydrology Page	NWS Cheyenne Hydrology Page
USBR Lakes and Reservoirs--Central and Eastern WY	USBR Lakes and Reservoirs--Western WY
USGS Streamflow Conditions	NRCS Wyoming Basin Outlook Reports

Climate Outlooks	
Three Month Outlook	Climate Prediction Center

Snowpack – Snow Water

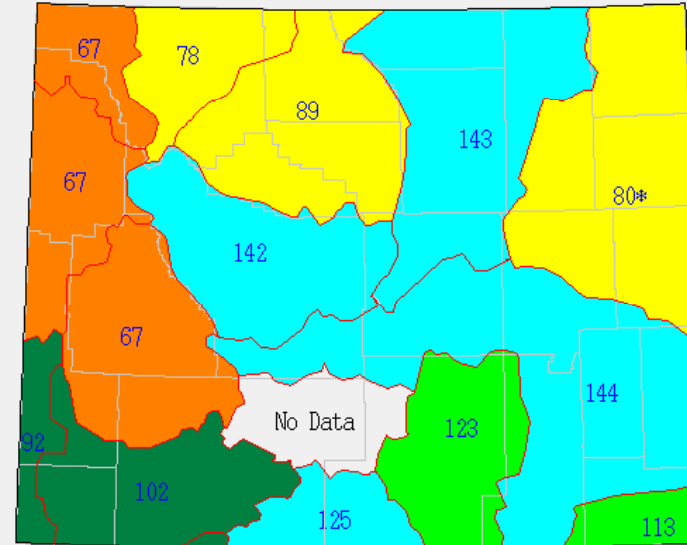
Updated Thursday, 20 May 2010

Percent of Average Key

< 25	25 to 50	50 to 75	75 to 90	90 to 110
110 < 125	125 to 150	150 to 175	175 to 200	> 200

Basin	SWE (% of Average)
Snake River	67
Upper Yellowstone-Madison	67
Wind River	142
Bighorn	89
Shoshone	78
Powder-Tongue	143
Belle Fourche	80
Upper North Platte River	123
Lower North Platte - Sweetwater - Laramie	144
Little Snake River	125
Upper Green River	67
Lower Green River	102
Upper Bear River	92
South Platte River	113

SWE % of Average as of Thursday, 20 May 2010



Percent of Average

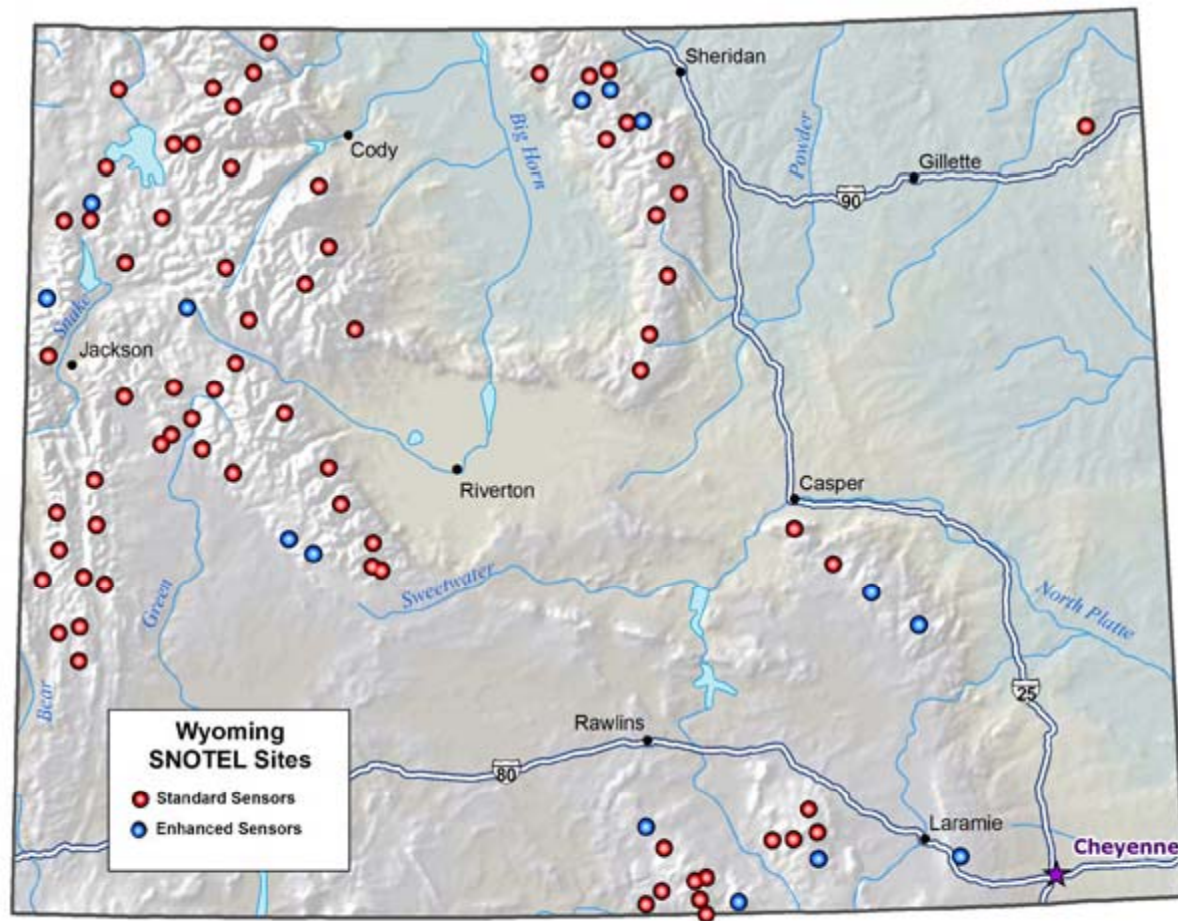
- > 200
- 175 to 200
- 150 to 175
- 125 to 150
- 110 to 125
- 90 to 110
- 75 to 90
- 50 to 75
- 25 to 50
- < 25

* = Data may not provide a valid measure of conditions

Statewide SNOTEL Measurements

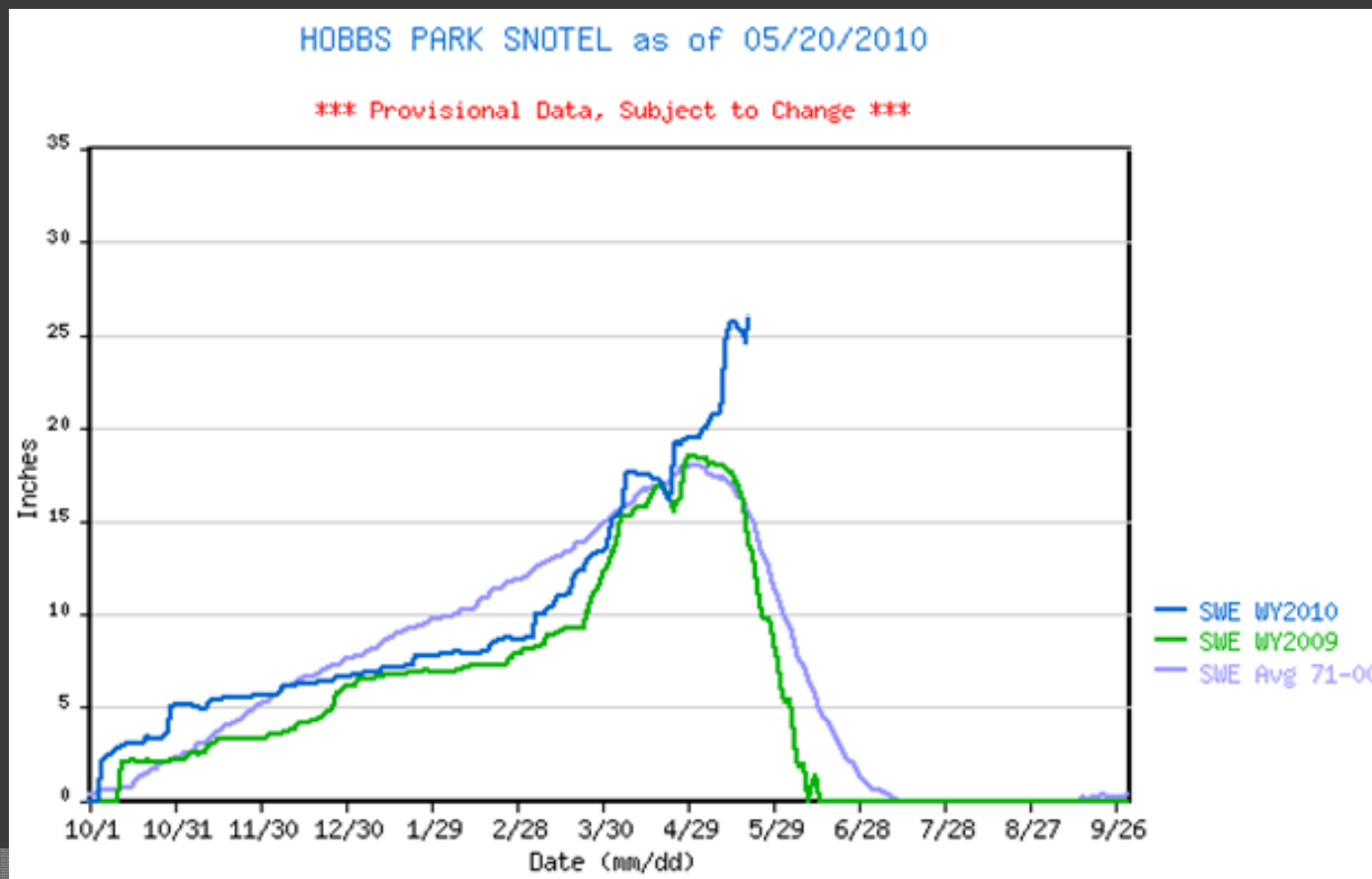
For individual sites, choose from the list, or select from the map below.

Choose a SNOTEL Site



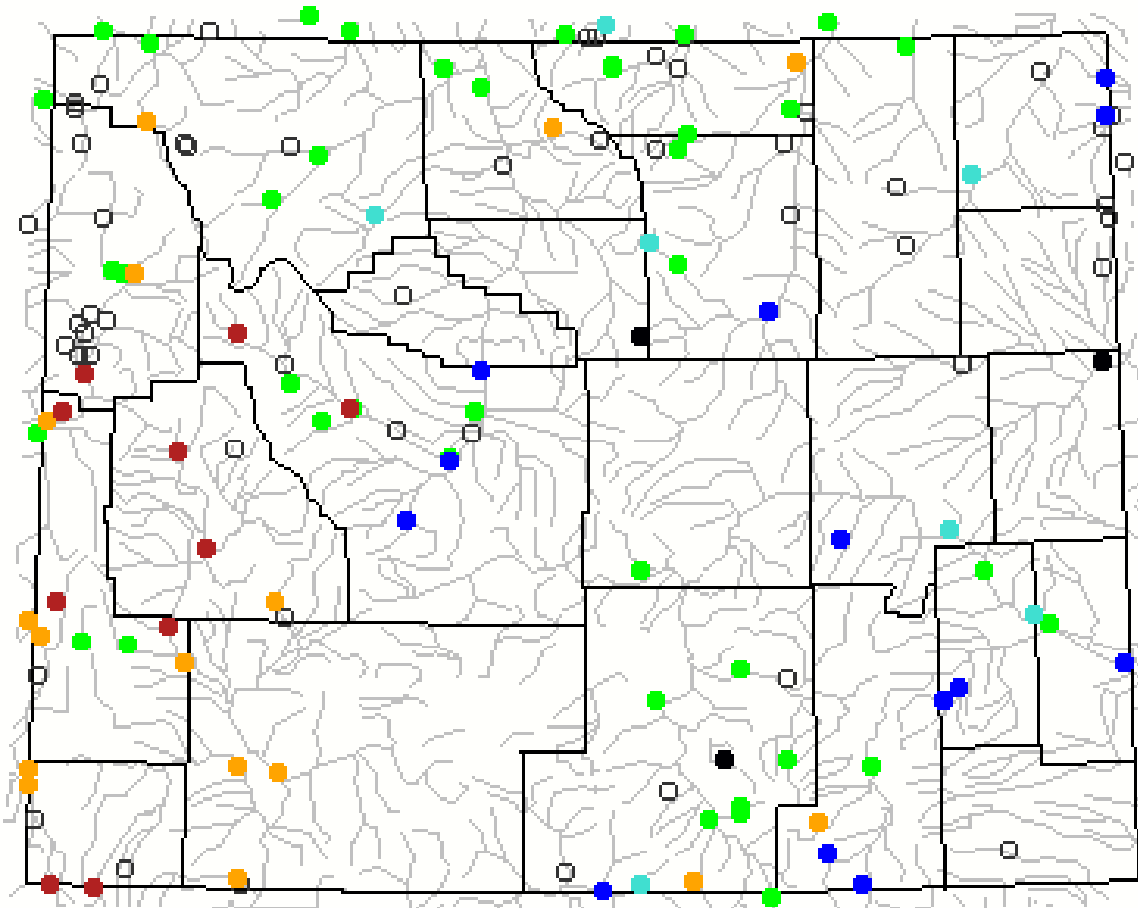
Individual SNOTEL Sites

- ⦿ Compared to 30-year average and previous water year totals



USGS Gaging Stations

Thursday, May 20, 2010 10:30ET



Drought Information Online

U.S. Drought Monitor Wyoming

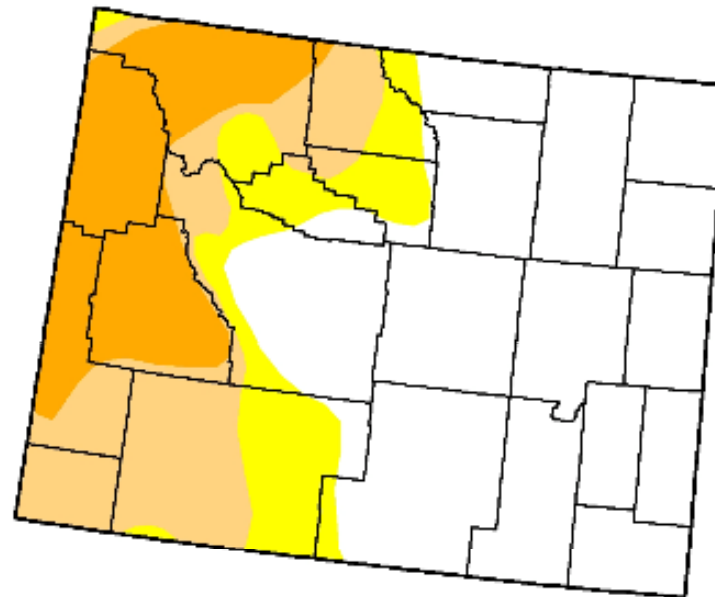
May 18, 2010
Valid 7 a.m. EST

Drought Conditions (Percent Area)

	None	D0-D4	D1-D4	D2-D4	D3-D4	D4
Current	56.6	43.4	31.7	15.5	0.0	0.0
Last Week (05/11/2010 map)	39.2	60.8	34.9	15.7	0.0	0.0
3 Months Ago (02/23/2010 map)	25.7	74.3	29.1	0.0	0.0	0.0
Start of Calendar Year (01/05/2010 map)	79.3	20.7	0.9	0.0	0.0	0.0
Start of Water Year (10/06/2009 map)	100.0	0.0	0.0	0.0	0.0	0.0
One Year Ago (05/19/2009 map)	86.0	14.0	3.1	0.0	0.0	0.0

Intensity:

- D0 Abnormally Dry
- D1 Drought - Moderate
- D2 Drought - Severe
- D3 Drought - Extreme
- D4 Drought - Exceptional



The Drought Monitor focuses on broad-scale conditions. Local conditions may vary. See accompanying text summary for forecast statements

<http://drought.unl.edu/dm>

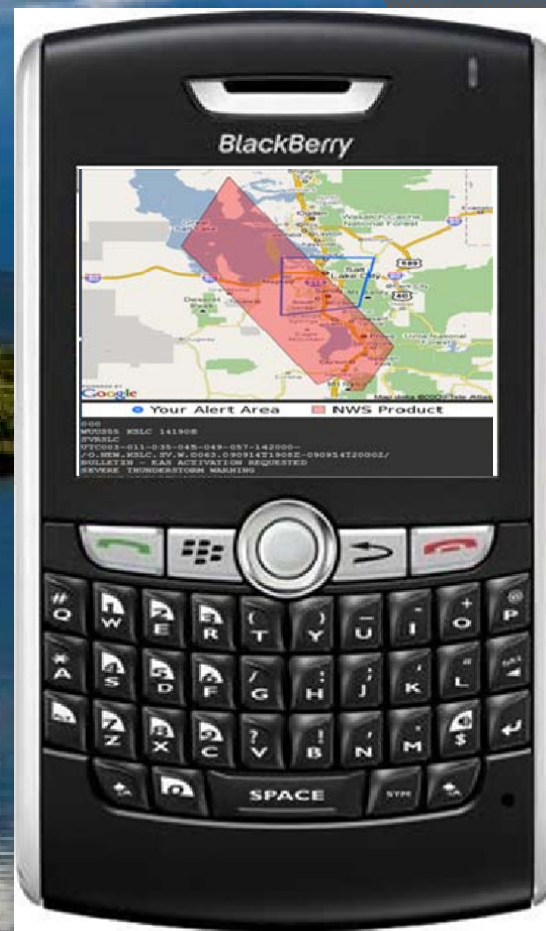


Released Thursday, May 20, 2010

Author: Eric Luebehusen, U.S. Department of Agriculture

Wyoming NWS Weather Forecast Offices

DIGITAL WEATHER SERVICES



Mobile Weather Links

- ⦿ HTTP enabled wireless device
mobile.weather.gov
- ⦿ WAP enabled wireless device
cell.weather.gov
- ⦿ Just enter city, state, or zip code for:
 - Forecast-at-a-glance
 - Detailed forecast
 - Doppler Radar Image

Weather Data In Google Earth

- Observations
- Real-time radar
- Forecasts
- Numerous other choices

Click placemark for link to NWS weather forecast

Image © 2008 DigitalGlobe
© 2008 Tele Atlas

Pointer 42°52'04.15" N 106°19'57.69" W Streaming 0% Eye alt 3281 ft

URL: <http://forecast.weather.gov/MapClick.php?&textField1=42.867820150267&textField2=-106.33269281078>

Your National Weather Service forecast
2 Miles N Casper WY

Enter Your "City, ST" or zip code Go

NWS Riverton, WY En Español
Point Forecast: 2 Miles N Casper WY
42.87N 106.34W (Elev. 5215 ft) Last Update: 7:53 am MDT Oct 30, 2008
Forecast Valid: 10am MDT Oct 30, 2008-6pm MST Nov 5, 2008

Forecast at a Glance

Today	Tonight	Friday	Friday Night	Saturday	Saturday Night	Sunday	Sunday Night	Monday
Hi 68°F	Lo 38°F	Hi 72°F	Lo 42°F	Hi 67°F	Lo 42°F	Hi 68°F	Lo 40°F	Hi 57°F

7-Day Forecast for Latitude 42.87N and Longitude 106.34W (Elev. 5215 ft)

Thank You!

www.weather.gov/billings

www.weather.gov/cheyenne

www.weather.gov/riverton

Billings – 406-652-0851

Cheyenne - 800-269-6220

Riverton - 800-211-1448



Contact me anytime:

Chris Jones

857-3898 ext. 726

chris.jones@noaa.gov