

# RECLAMATION

*Managing Water in the West*

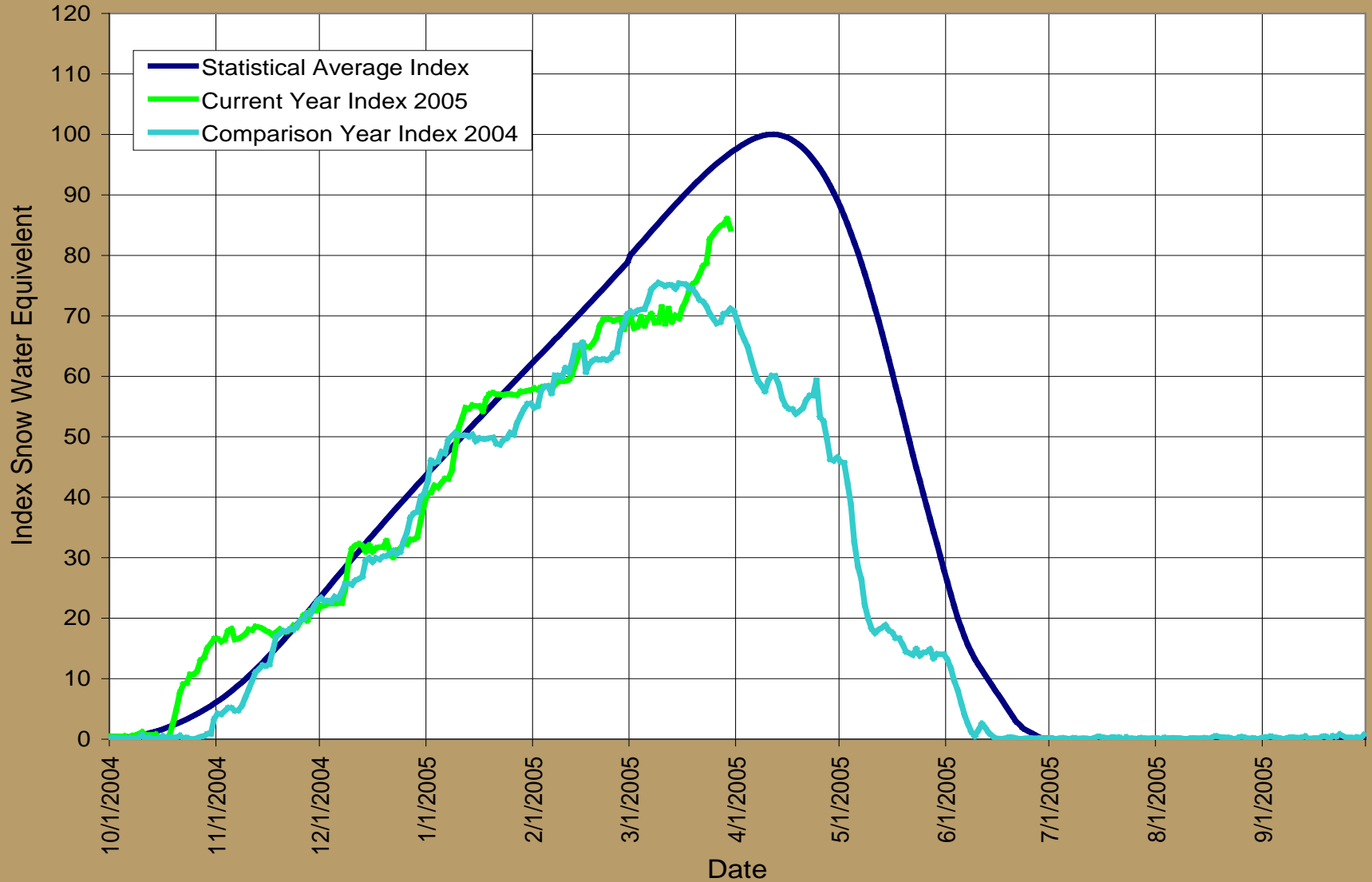
## Water Supply Outlook

**Fontenelle & Flaming Gorge Reservoirs**  
*Spring 2005*

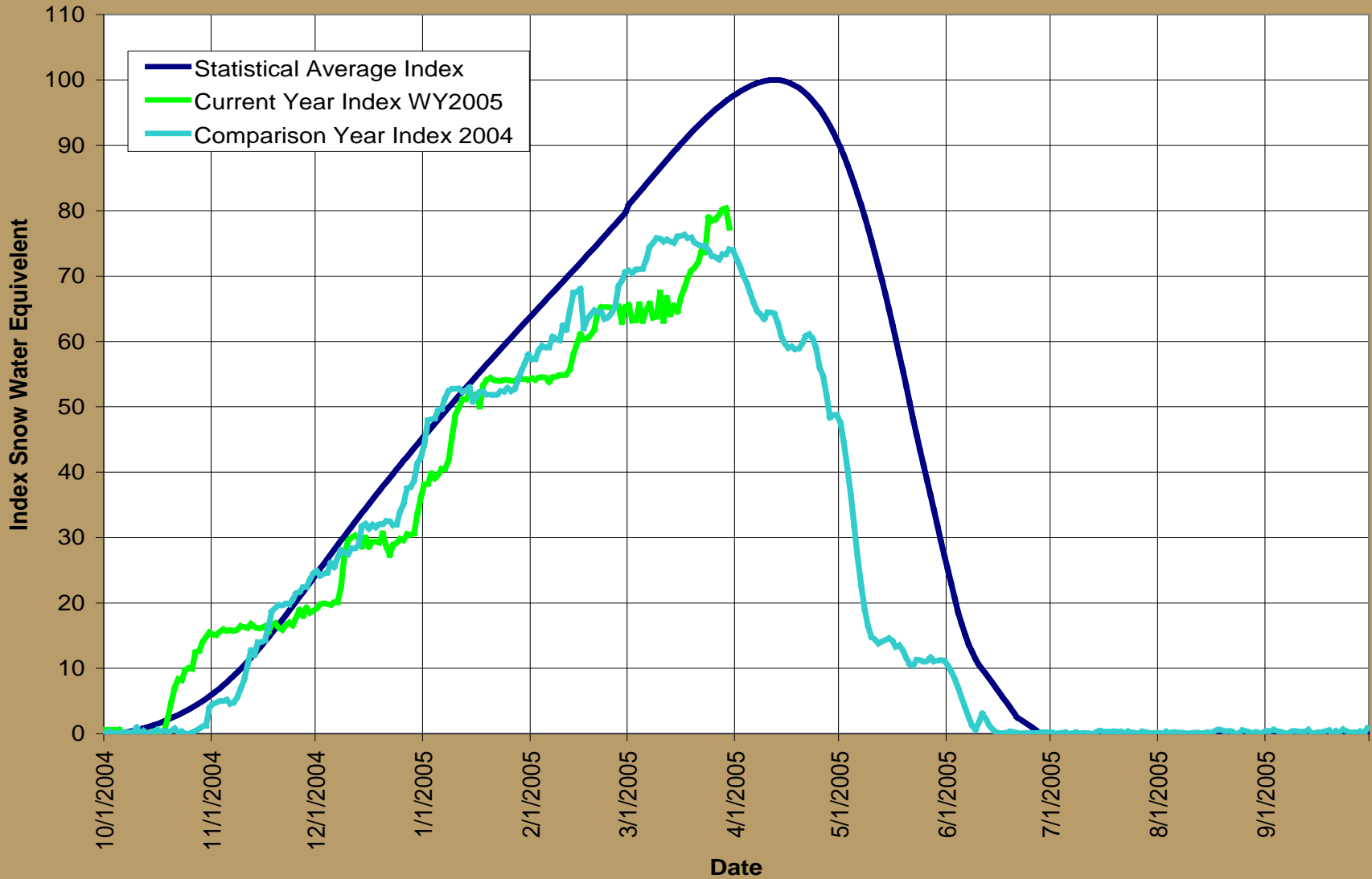


U.S. Department of the Interior  
Bureau of Reclamation

# Upper Green River Basin (above Flaming Gorge) Snowpack Tracking

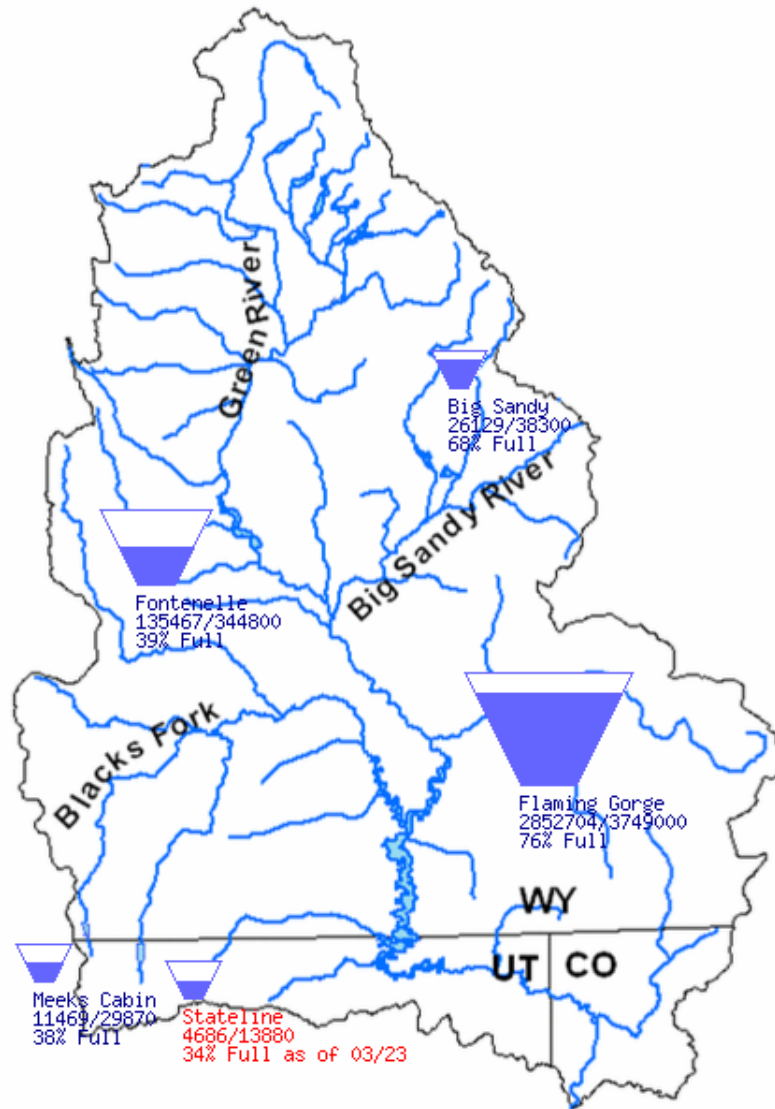


# Upper Green River Basin (above Fontenelle) Snowpack Tracking



Data Current as of:  
03/28/2005

# Upper Green River Basin



# CBRFC Forecasted Inflows for Spring 2005

## Issued March 15, 2005

**Apr-Jul Inflow  
Volume KAF**      **Percent of  
Ave.**

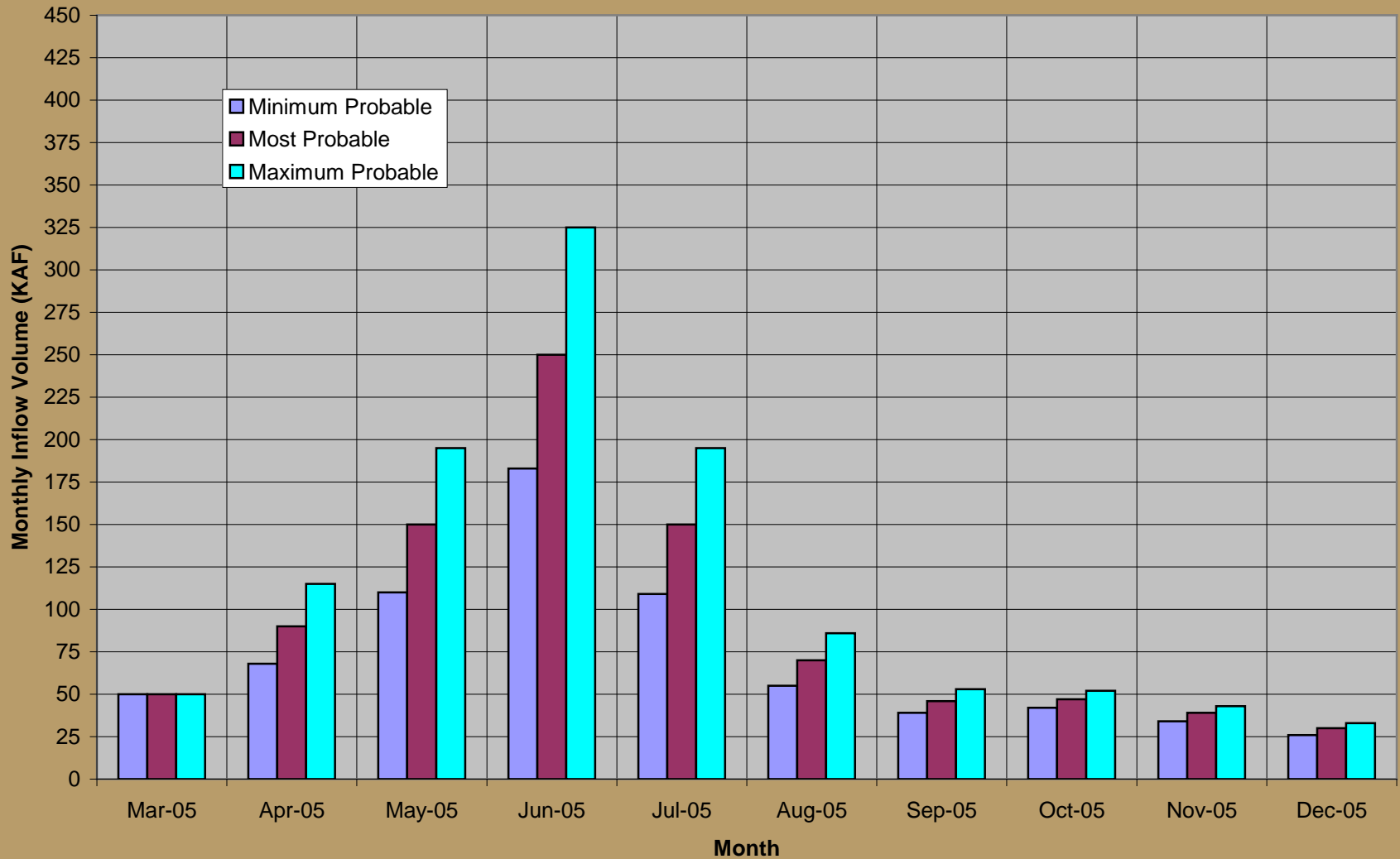
<b>Fontenelle</b>	<b>Min Probable</b>	<b>470</b>	<b>54.8%</b>
	<b>Most Probable</b>	<b>640</b>	<b>74.6%</b>
	<b>Max Probable</b>	<b>830</b>	<b>96.7%</b>

<b>Flaming Gorge</b>	<b>Min Probable</b>	<b>570</b>	<b>47.9%</b>
	<b>Most Probable</b>	<b>900</b>	<b>75.7%</b>
	<b>Max Probable</b>	<b>1230</b>	<b>103.5%</b>

**RECLAMATION**

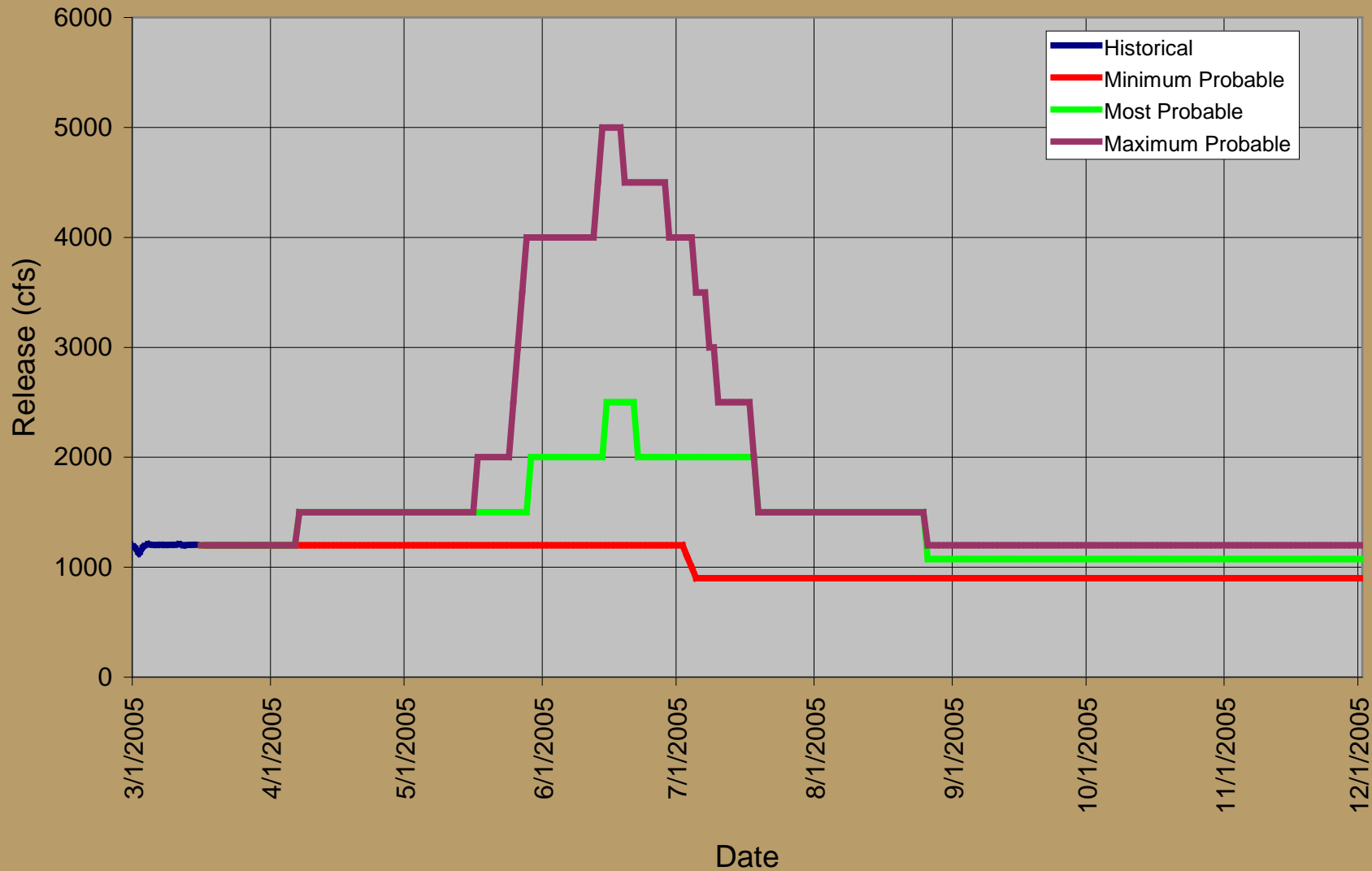
# Fontenelle Inflow Forecasts for WY2005

## March 2005



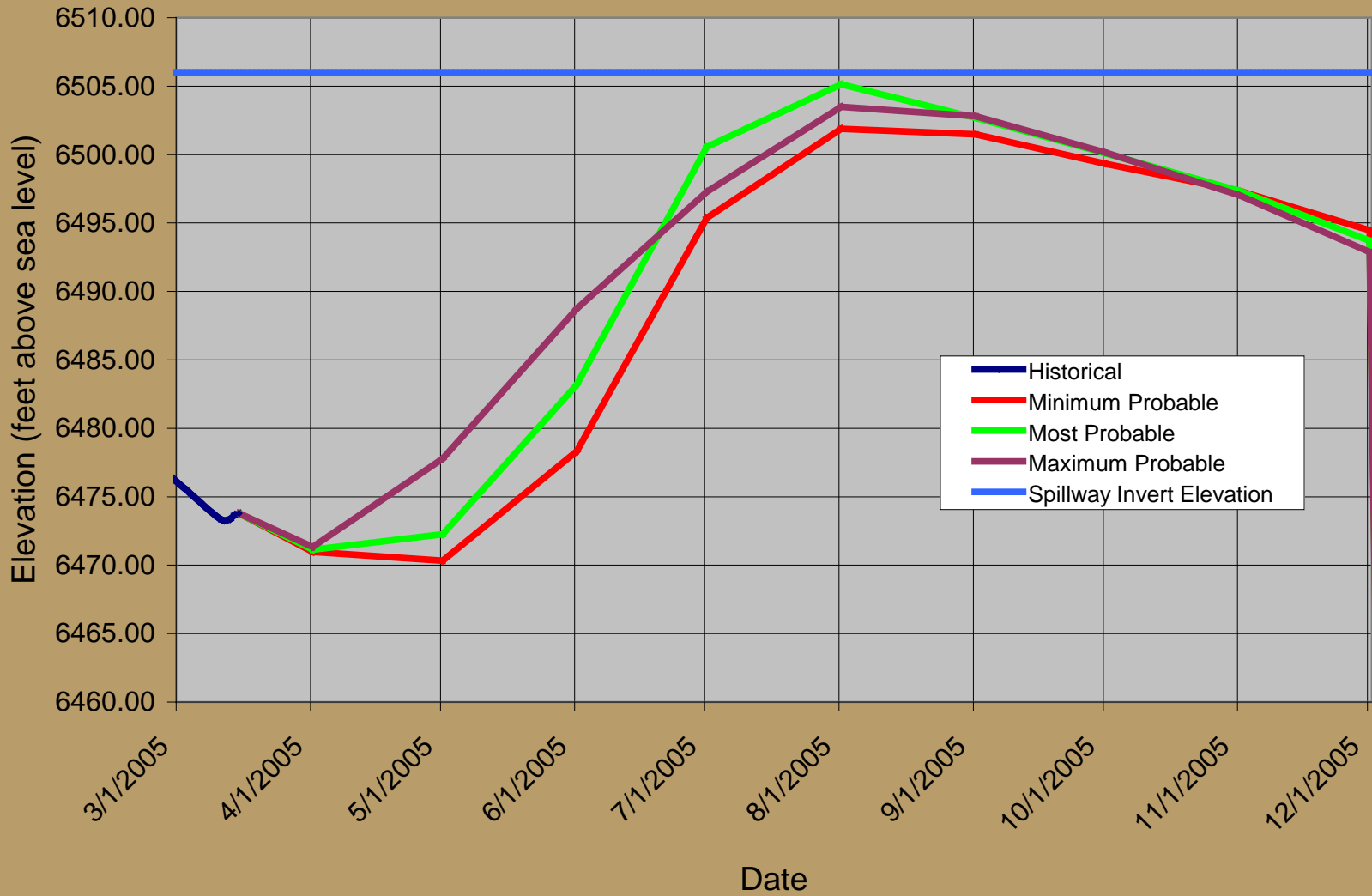
# Fontenelle Operations for WY2005

## Potential Release Schedules



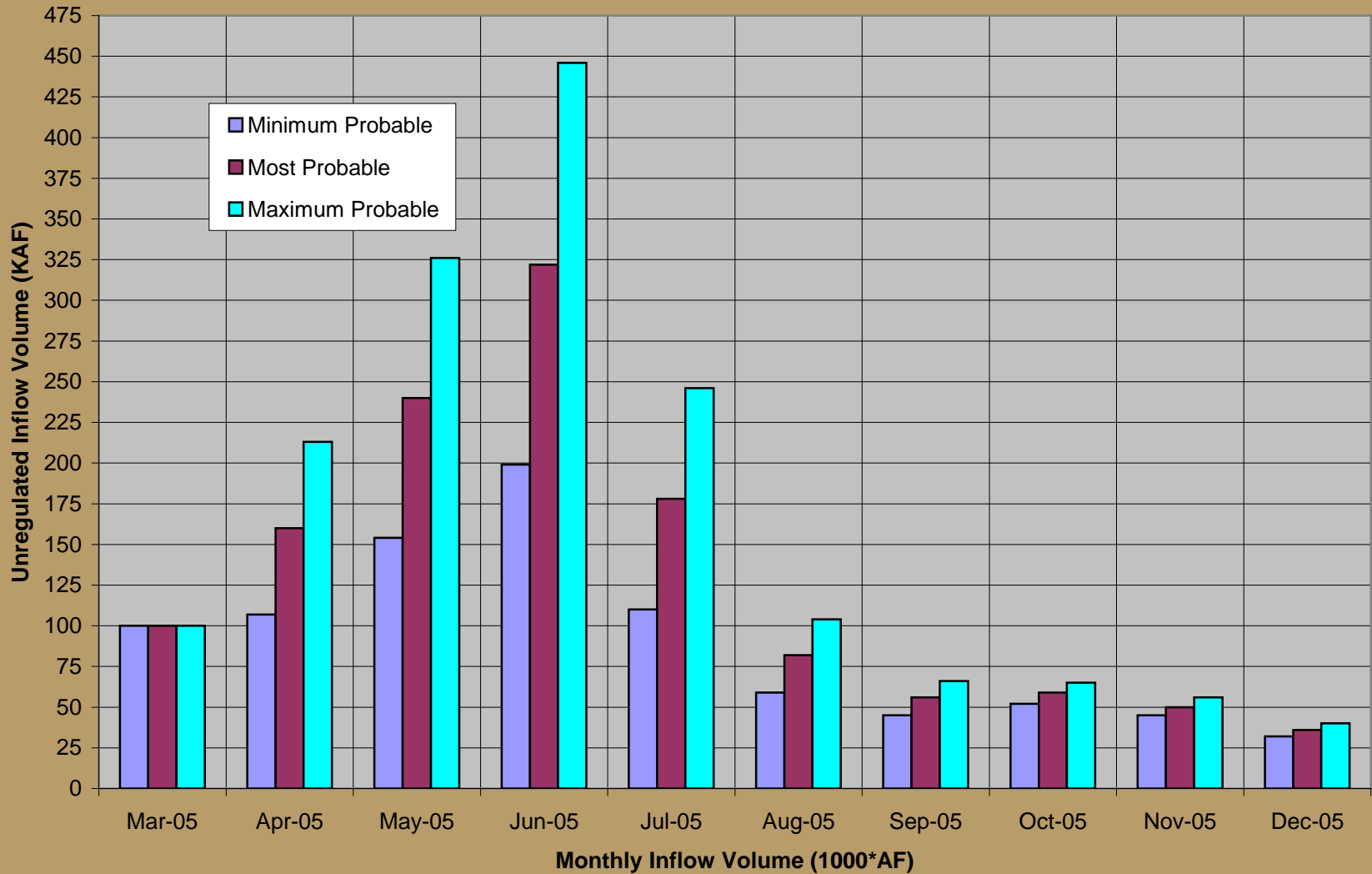
# Fontenelle Operations WY2005

## Potential Elevation Schedule

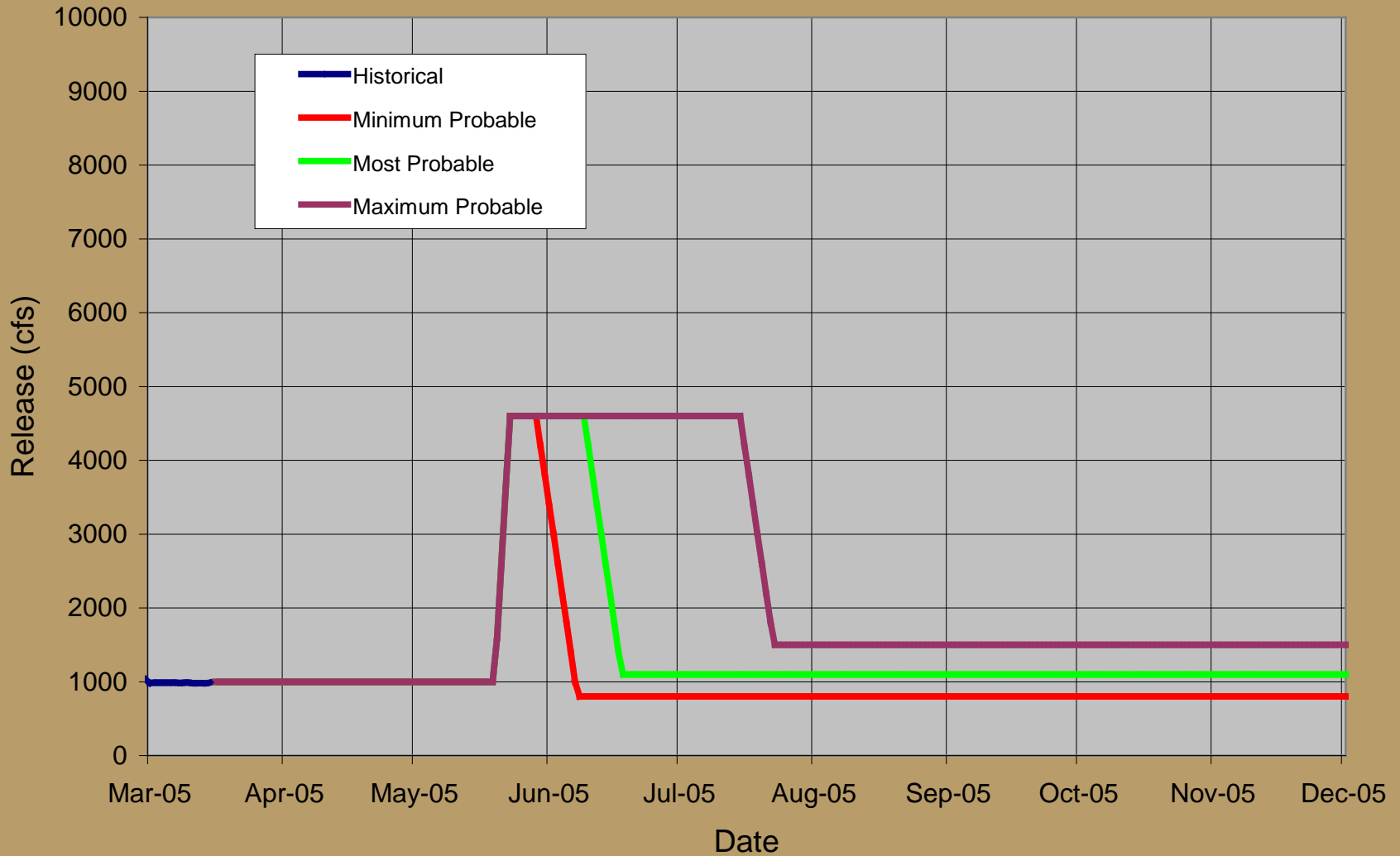




# Flaming Gorge Inflow Forecasts March 2005



# Flaming Gorge Operations WY2005 Release Schedule



# Flaming Gorge Operations WY2005

## Elevation Schedules

