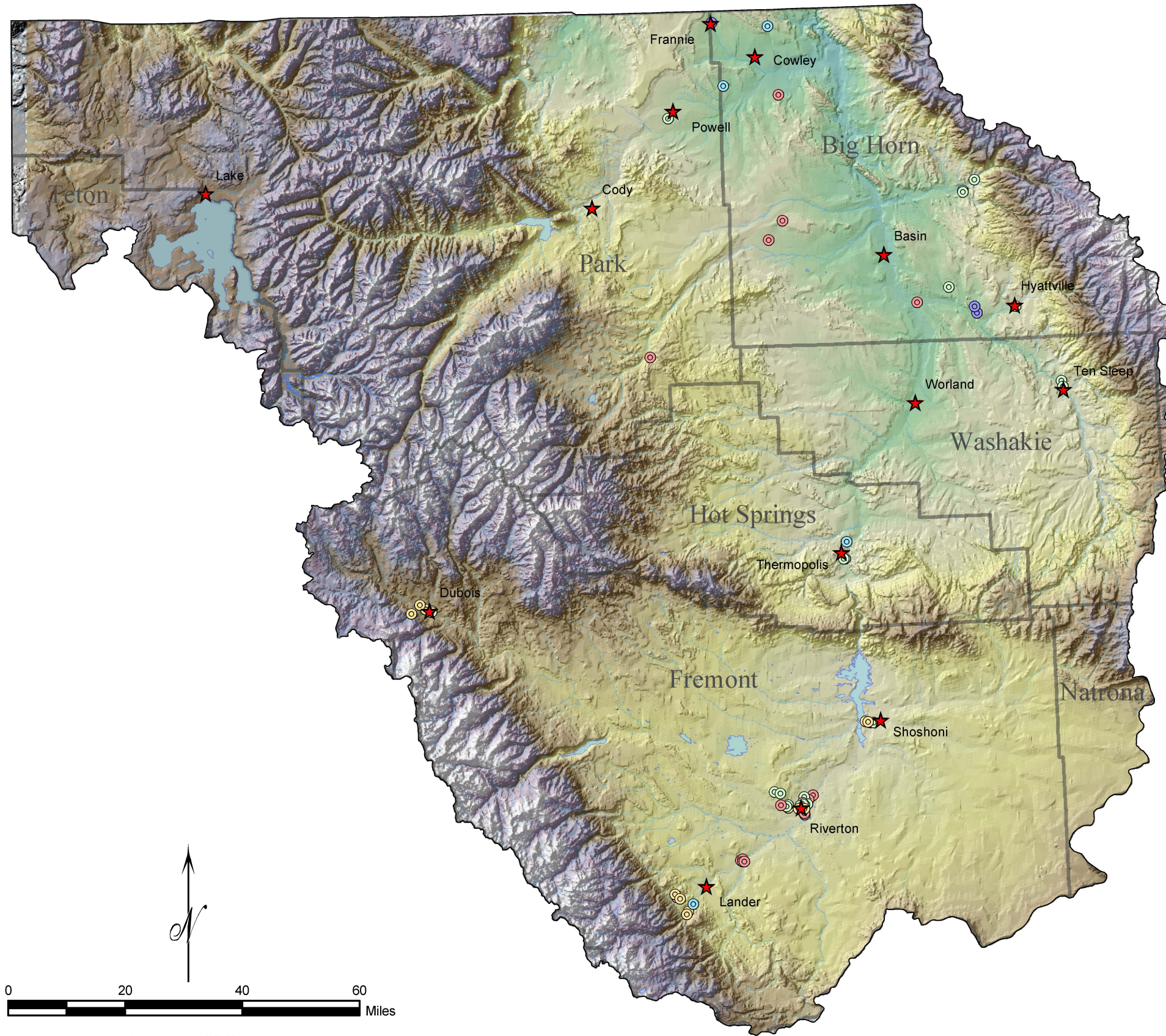


Figure 1

### Wind/Bighorn River Basin with Active Permitted Municipal Wells with Production Rates of 50 GPM or Greater



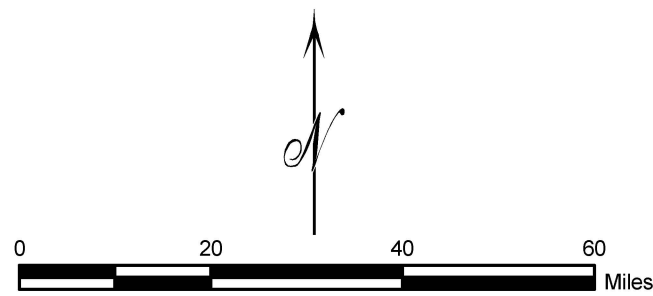
#### Explanation

##### Municipal Well Yields (gpm)

- 0 - 125
- >125 - 250
- >250 - 750
- >750 - 1500
- >1500

##### Elevation (feet)

- High : 13780
- Low : 3638



MAP PROJECTION:  
UTM Zone 13, North American Datum 27

**BRS** ENGINEERING  
BRS Engineering  
1225 Market Street  
Riverton, Wyoming 82501  
(307) 857-3079

