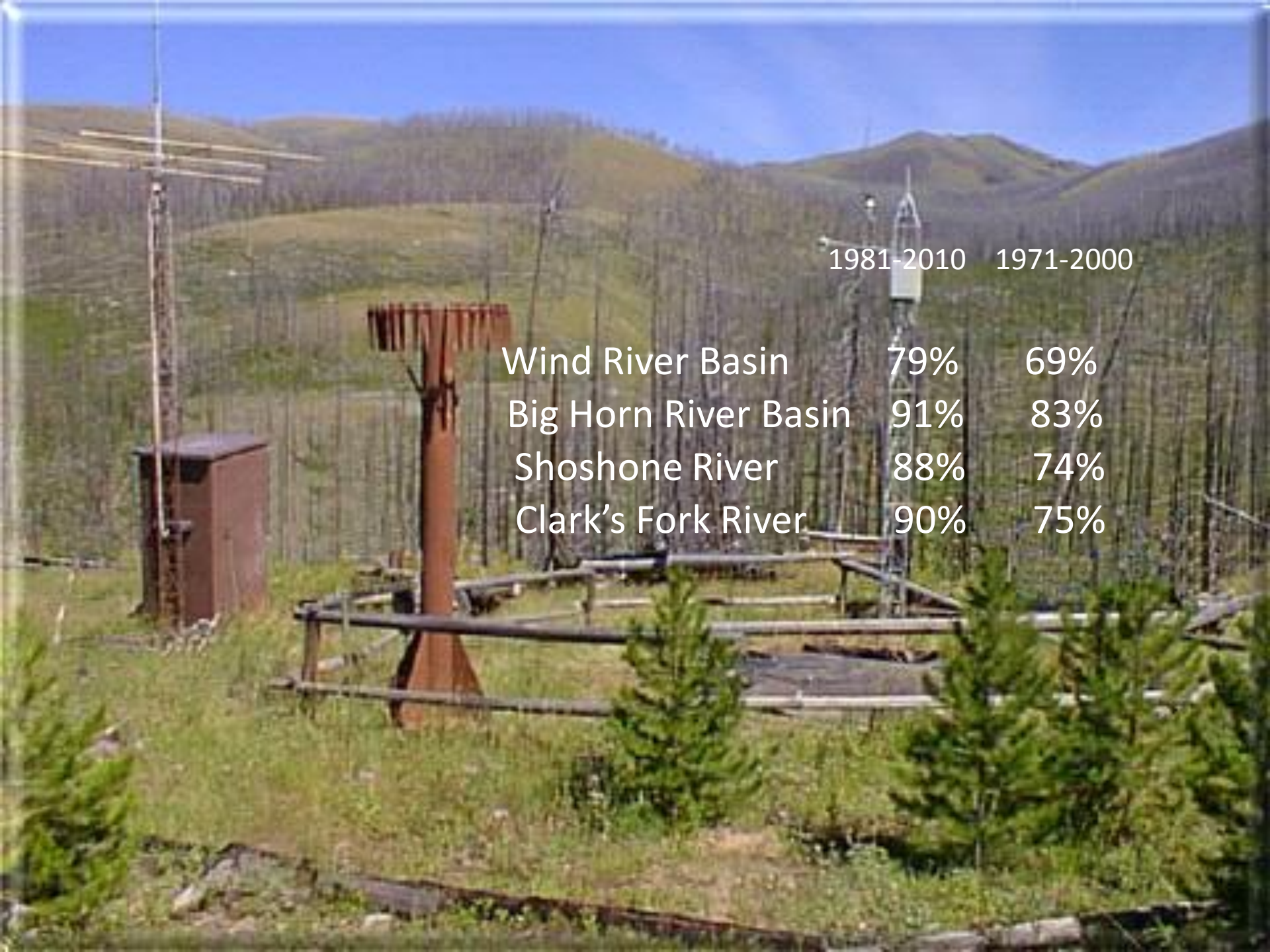


Wind/Bighorn River Basin Advisory Group

Wyoming State Engineer's Office

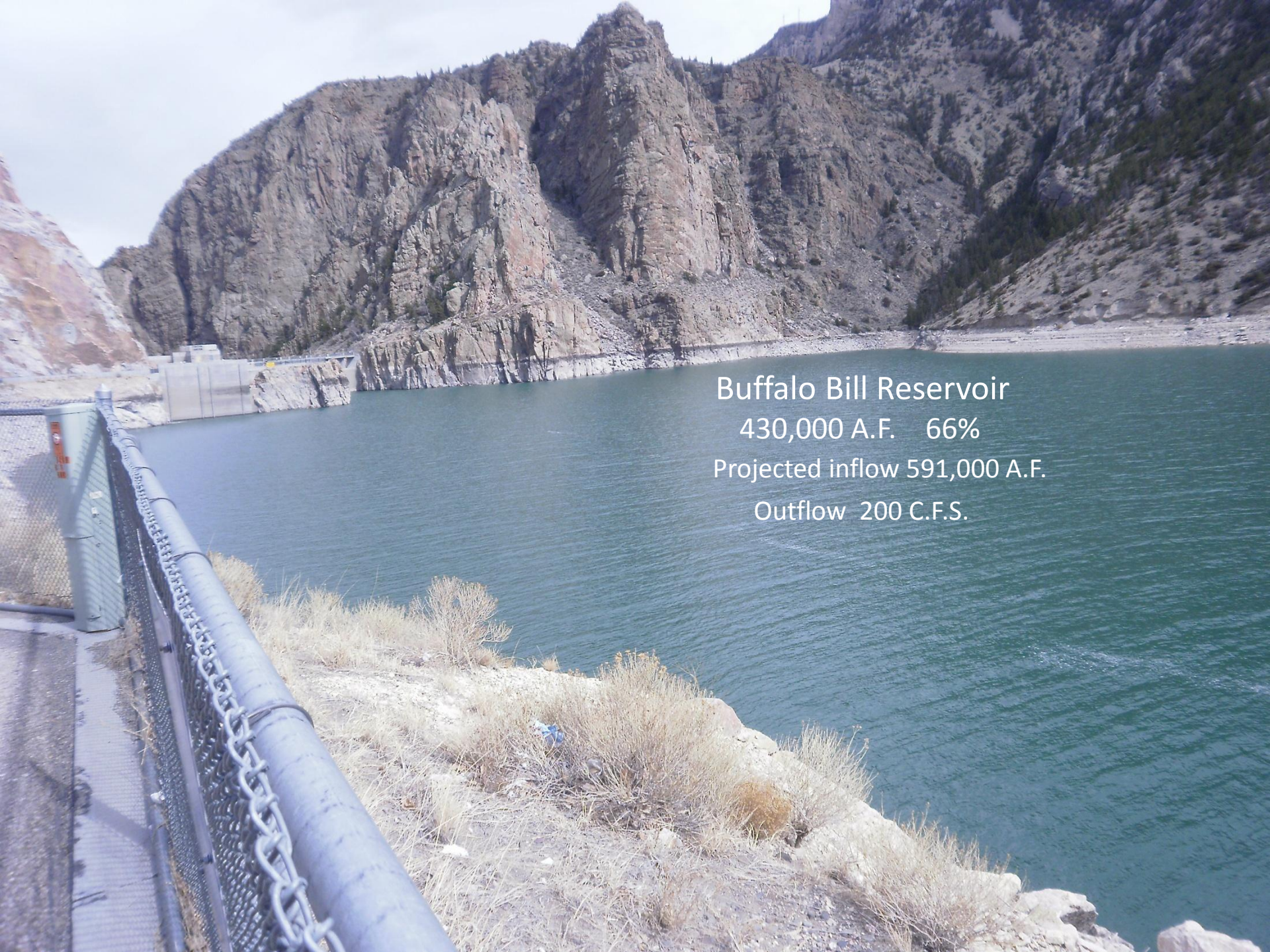
Landis Webber

April 3, 2013



1981-2010 1971-2000

Wind River Basin	79%	69%
Big Horn River Basin	91%	83%
Shoshone River	88%	74%
Clark's Fork River	90%	75%



Buffalo Bill Reservoir
430,000 A.F. 66%
Projected inflow 591,000 A.F.
Outflow 200 C.F.S.







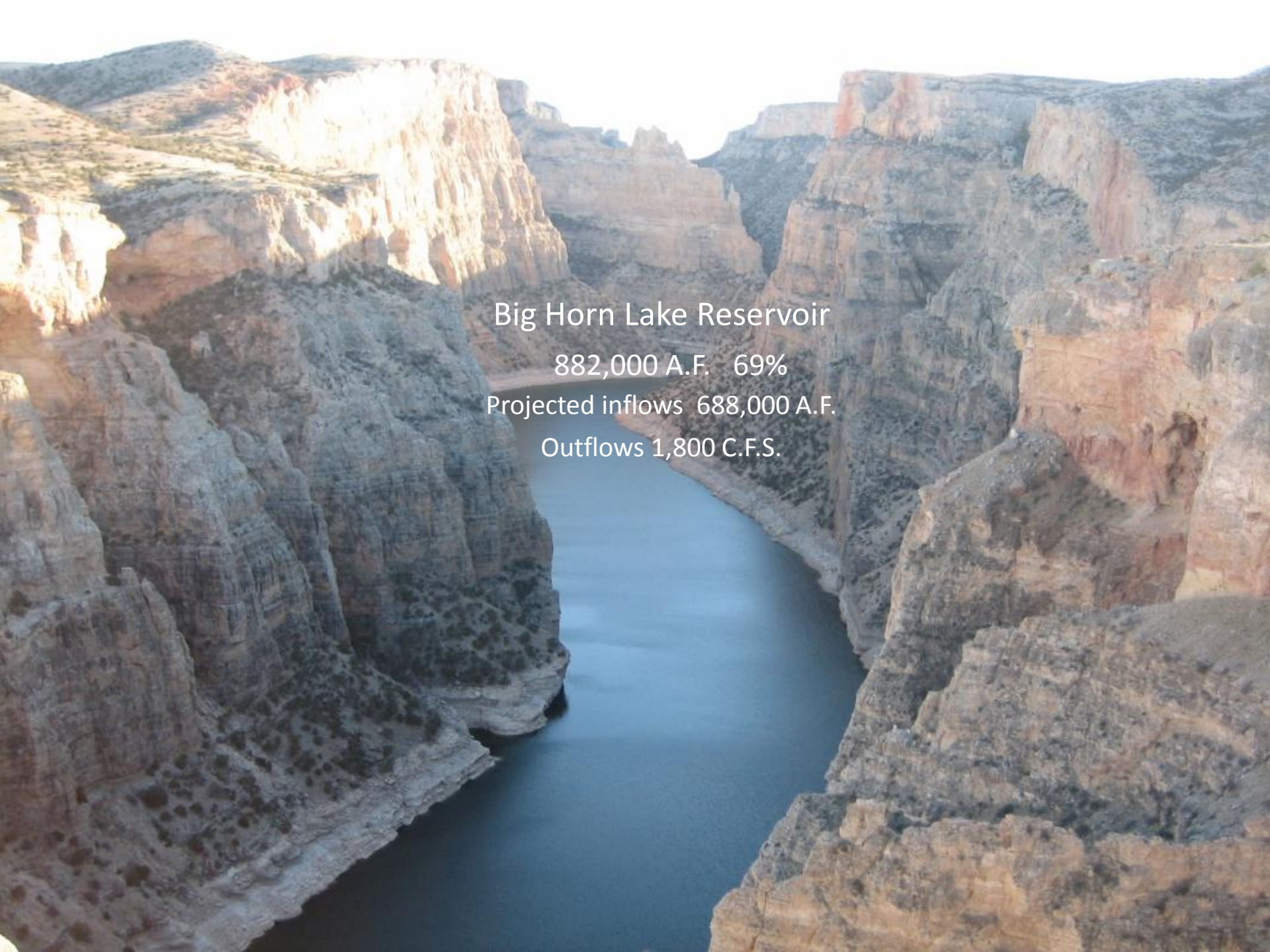


Boysen Reservoir

528,000 A.F. 59%

Projected inflow 400,000 A.F.

Out flow 500 C.F.S.

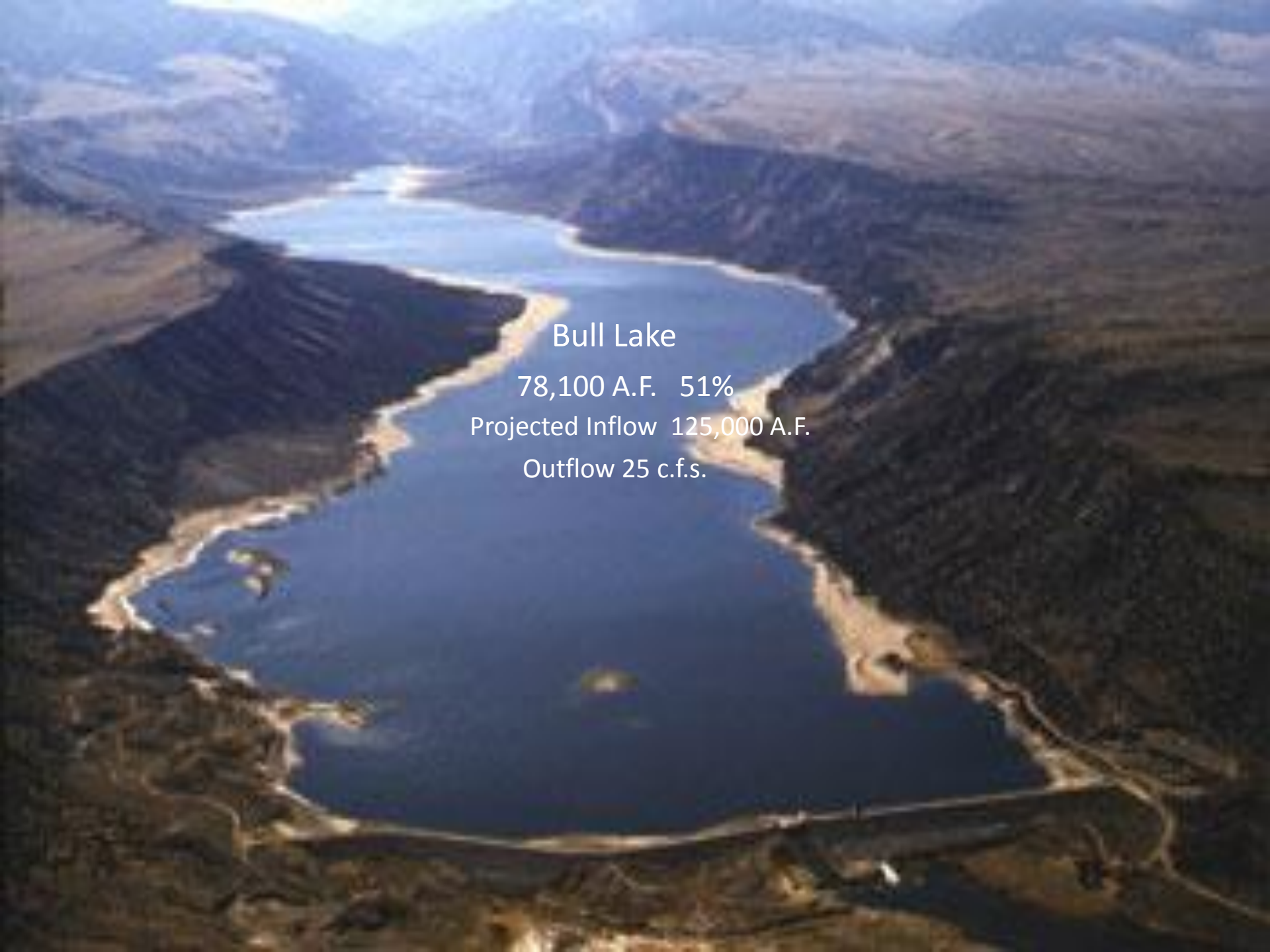


Big Horn Lake Reservoir

882,000 A.F. 69%

Projected inflows 688,000 A.F.

Outflows 1,800 C.F.S.



Bull Lake

78,100 A.F. 51%

Projected Inflow 125,000 A.F.

Outflow 25 c.f.s.



Pilot Butte

27,200 A.F. 81%
Off Channel Reservoir
Outflow 0 c.f.s.



Upper Sunshine Reservoir

21,422 A.F. 40%

Off Channel Reservoir

Outflow 0 c.f.s.








Lower Sunshine Reservoir

16,750 A.F. 30%

Off Channel

Outflow 0 c.f.s.





Roach Gulch Reservoir

4,900 A.F. 15%

Off Channel

Outflow 0 c.f.s.



Adelaide Reservoir

703 A.F. 15%

Off Channel

Outflow 0 c.f.s.

Adelaide Res.

Shell Lake Reservoir

245 A.F. 13%

Off channel

Outflow 0 c.f.s.

Shell Lake Res.

Canals 32
Streams 18
Reservoirs 5



