

# WIND/BIG HORN BASIN ADVISORY GROUP PRESENTATION

**September 17, 2009**

**Lee Craig, County Executive Director  
United States Department of Agriculture  
Park County Farm Service Agency  
Powell, Wyoming**



United States  
Department of  
Agriculture

Farm  
Service  
Agency

Park County FSA Office  
1017 Highway 14A  
Powell, WY 82435  
Ph: 307-754-9411 Fax: 307-754-2761

**Irrigated cropland use in Park County Wyoming in 2008**

Total Irrigated Cropland acres according to USDA/Farm Service Agency records: 111,225 acres

**Crop                      Reported to Farm Service Agency (acres)**

Barley	19691
Alfalfa	
Hay	1 0714
Seed	3923
Sugar Beets	10474
Beans (Dry Edible and Seed)	8320
Corn	4535
Mixed forages (Alfalfa/Grass mix, etc...)	3092
Grass	
Seed	2567
Hay	452
Fallow	913
Oats	805
Red Clover (Seed)	796
Wheat	595
Sunflowers	121
Total reported irrigated acres	<b>66,998</b> acres

Unreported acres \***44,227** acres

The unreported acres are predominately irrigated hay and irrigated pastures in the Cody and Meeteetse areas. They are mostly large ranches.

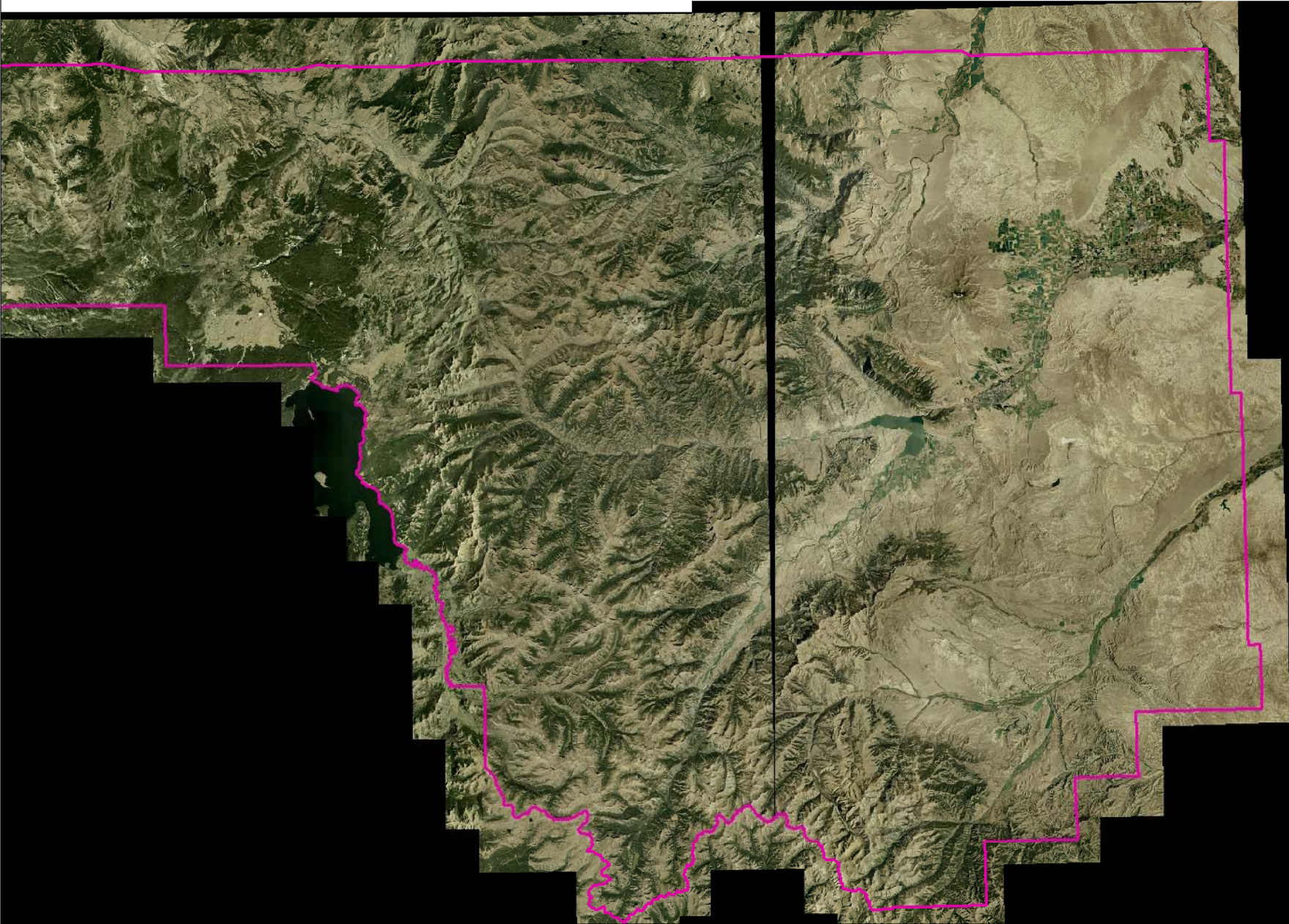
There are also several hundred acres on "ranchettes" that are not counted in the total irrigated cropland figure. These acres do not appear in USDA information because they have been determined to be ineligible to participate in USDA farm programs and therefore are not carried on the Farm Service Agency computer database. However, these small plots of hay and pasture are still being irrigated. It would be difficult to determine an exact number of acres that fall in this area.

Park County, WY

FN-  
T-

- CLU/Field Boundary
- Farm Boundary

1:546,008



**Map for FSA Program  
Purposes Only**

Disclaimer: Wetland identifiers do not represent the size, shape or specific determination of the area. Refer to your original determination (CPA-026 and attached maps) for exact wetland boundaries and determinations, or contact NRCS.

# What crops are being grown?

- **Barley**
- **Hay**
- **Sugar Beets**
- **Dry edible beans**
- **Corn**
- **Seed crops**
- **Other small grains**
- **Other forages**



# Trends in local agriculture

- Improvements in irrigation systems; sprinklers, surge irrigation, gated pipe, etc
- GMO's
- Changes in tillage practices
- Crops requiring less tillage (perennials, etc)
- Farmers are getting older
- Acres farmed/farmer is increasing
- Very few young farmers entering agriculture

# Changes/trends in water demands

- As of today, water demand in Park County remains largely agricultural use.
- Other uses:
  - Municipal
  - Industrial
  - Recreational
  - Wildlife

# What will ag look like in the future in Park County?

- **Farmer's decisions will be economically based!!**
  - Agriculture is a business. The successful farmers know that and treat it as a such.**
- **More reliance on GMO crops due to:**
  - Easier and cheaper weed control**
  - Insect and disease resistance, therefore reducing chemical use**
  - Less compaction, due to less trips over the land and higher yields**
- **Less tillage when possible**
- **Continuing changes and updates to irrigation systems**
  - More sprinklers**
  - Potential for drip irrigation systems**
  - Irrigation improvements must pay for themselves or they won't be installed**
- **What crops will be grown here?**
  - Anything that will legally grow to maturity in our climate and show a reasonable profit**
  - I don't have the answer to what it will be.**

# Ideas for future use of water

- Develop a biomass facility to convert crop residue to biofuels.
- Utilize crop residue as a power source for steam powered electrical generation.
- Team crop residue with natural gas for steam powered electrical generation.
- I know these are just pipe-dreams, but, food for thought.



# The Entrepreneur

