

FREMONT COUNTY DROUGHT TASK FORCE

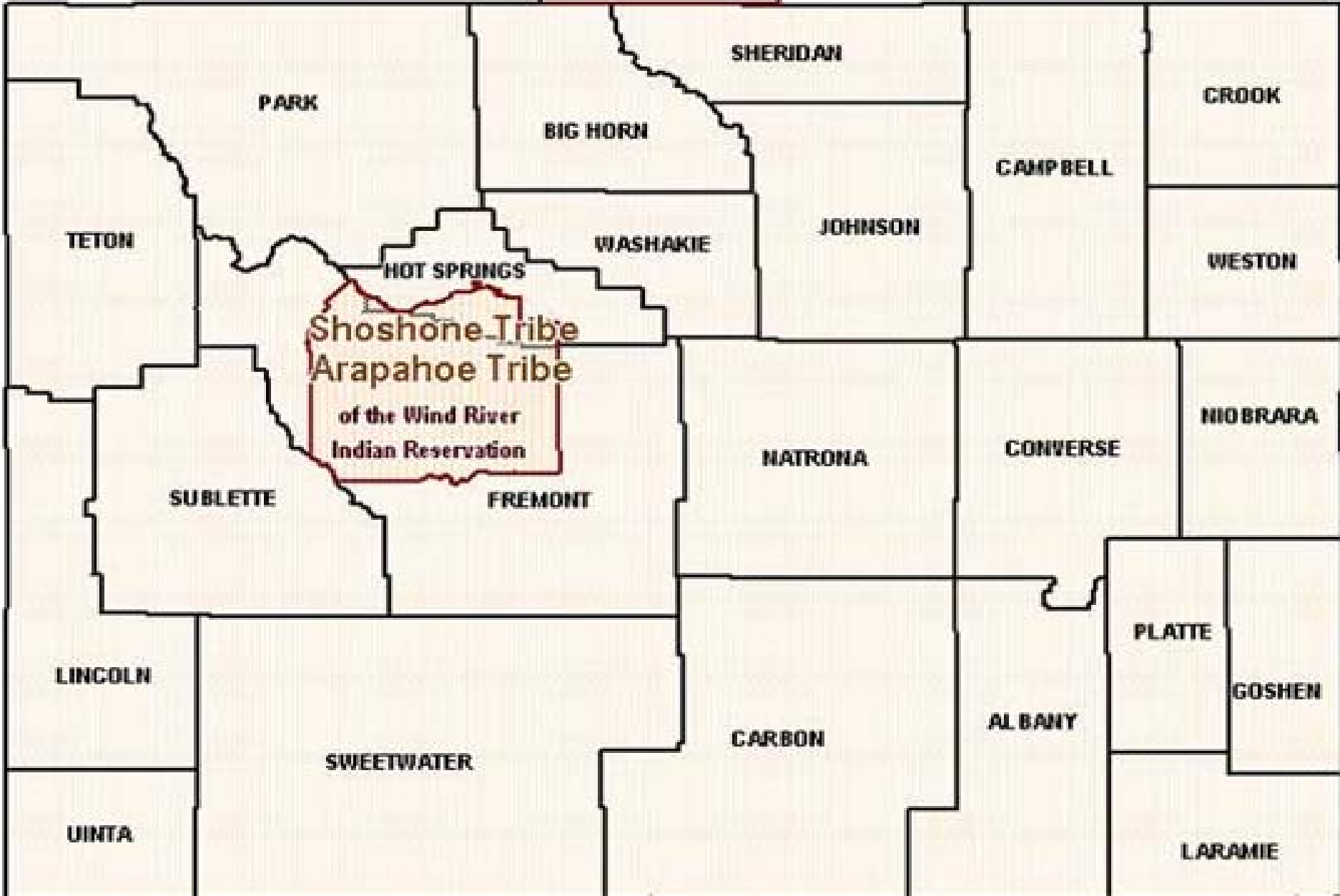
11/17/2003

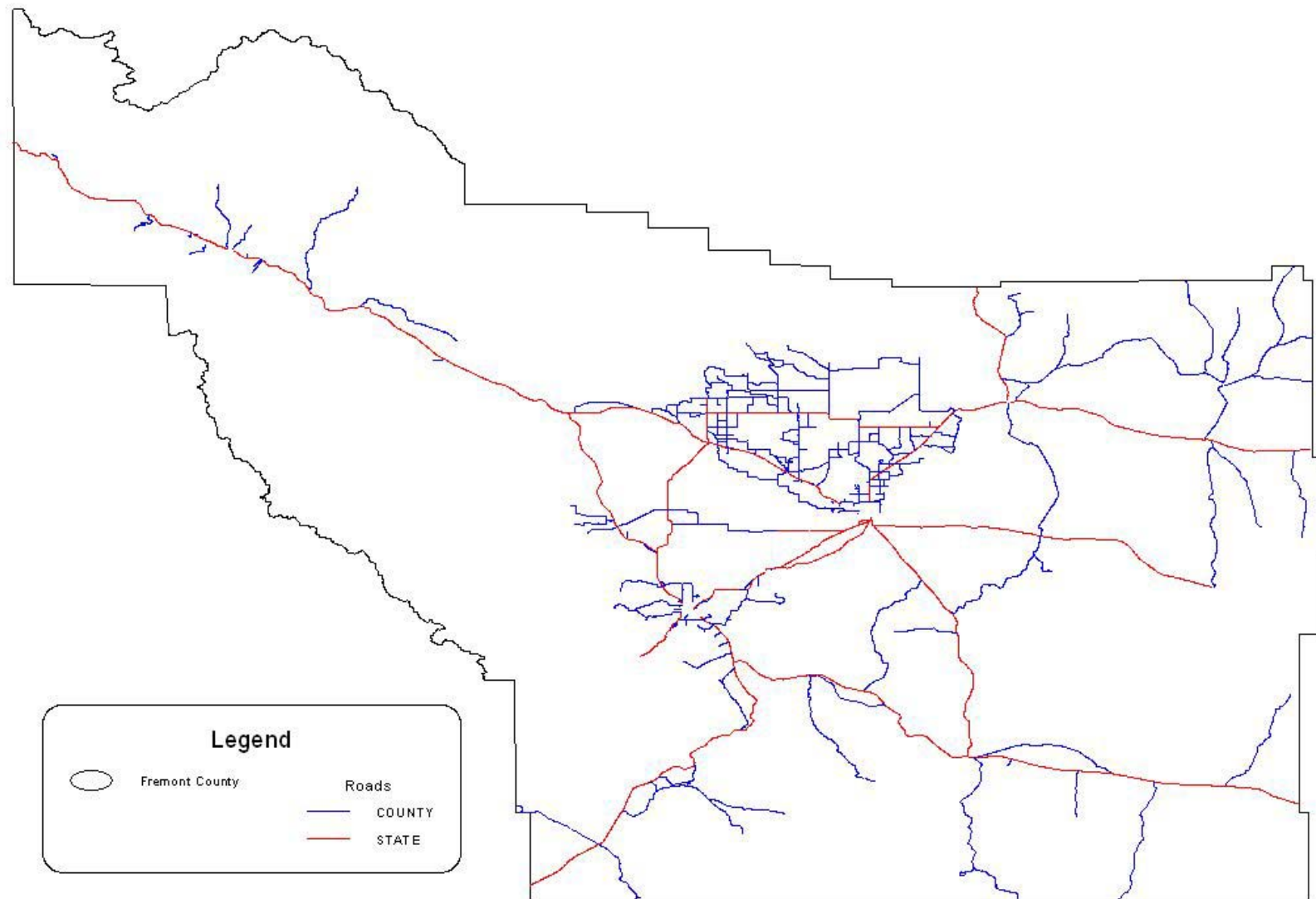
FREMONT COUNTY
EMERGENCY MANAGEMENT
AGENCY

Developing an Effective Task Force to Mitigate The Long Term Effects of Drought

11/17/2003

FREMONT COUNTY
EMERGENCY MANAGEMENT
AGENCY







11/17/2003

FREMONT COUNTY
EMERGENCY MANAGEMENT
AGENCY

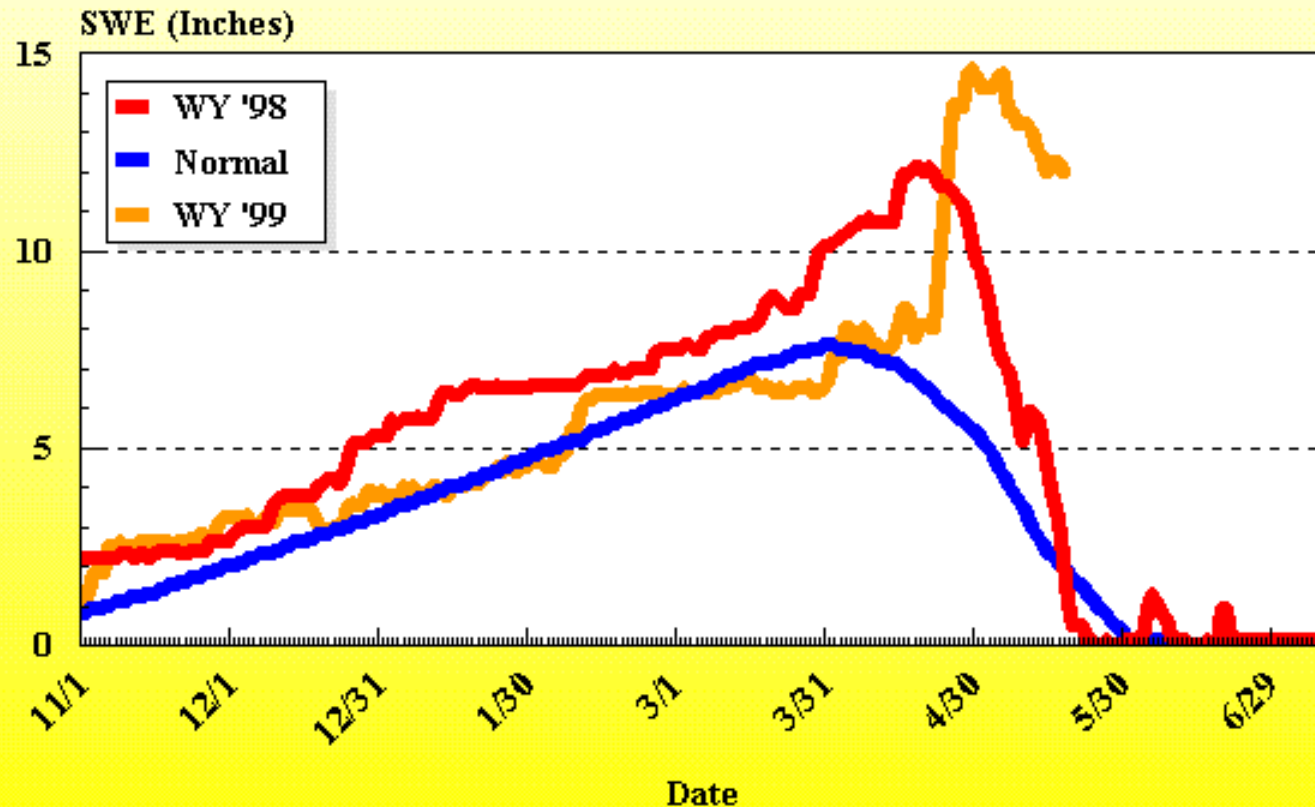


11/17/2003

FREMONT COUNTY
EMERGENCY MANAGEMENT
AGENCY

St Lawrence Alt.

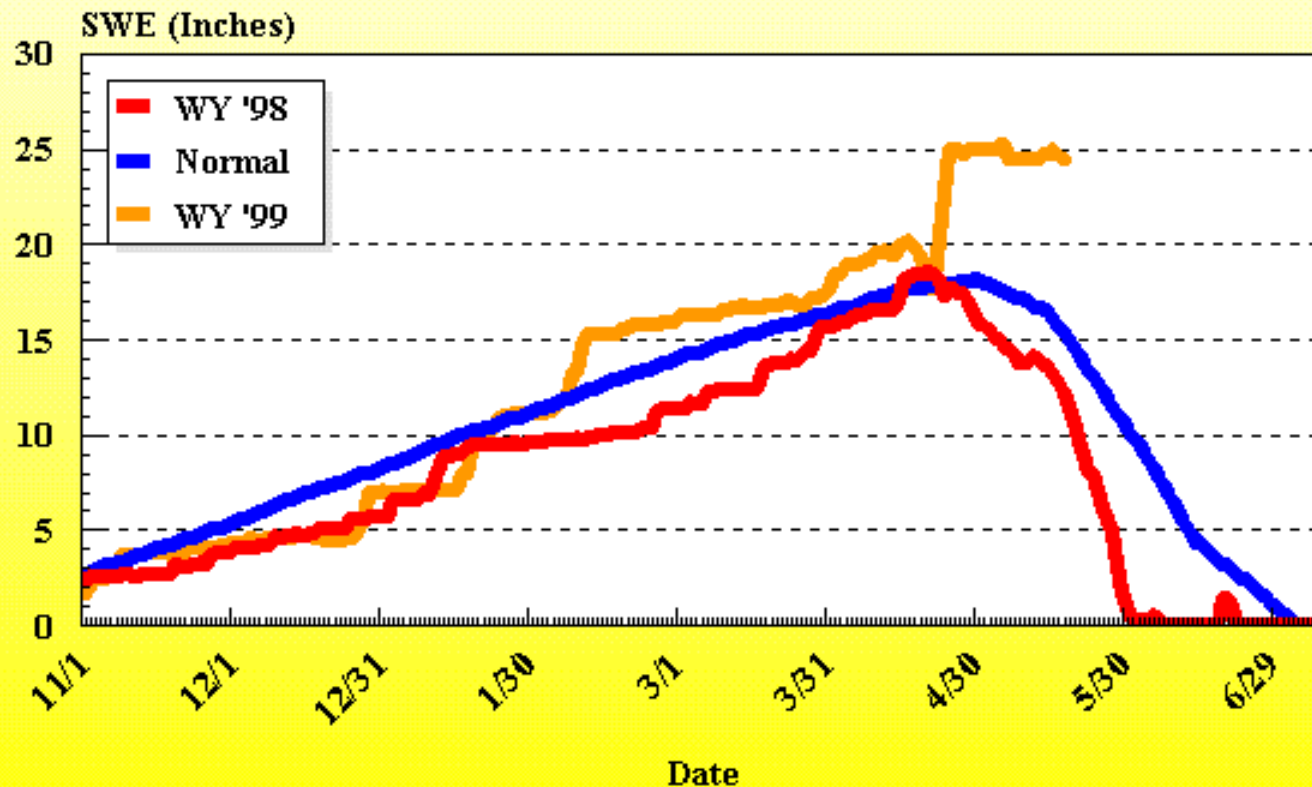
Snow Water Equivalent



Wind River drainage/Wind River Range (Elev. 8620 Ft)

South Pass

Snow Water Equivalent



Sweetwater River drainage/Wind River Range (Elev. 9040 Ft)



Friday, April 23, 1999 Lander Wyoming



11/17/2003

FREMONT COUNTY
EMERGENCY MANAGEMENT
AGENCY

10



11/17/2003

FREMONT COUNTY
EMERGENCY MANAGEMENT
AGENCY

11



11/17/2003

FREMONT COUNTY
EMERGENCY MANAGEMENT
AGENCY

12



11/17/2003

FREMONT COUNTY
EMERGENCY MANAGEMENT
AGENCY

13



11/17/2003

FREMONT COUNTY
EMERGENCY MANAGEMENT
AGENCY

14

RIVERTON

MONDAY, APRIL 15, 2002

4:30 PM



County declared disaster

County Commission hoists
white flag with no end in
sight of current drought

BY ERNIE OVER
Staff Writer

Fremont County was declared a drought disaster area Tuesday morning by the county commissioners after hearing a recommendation from their drought task force. The



11/17/2003

FREMONT COUNTY
EMERGENCY MANAGEMENT
AGENCY

17



BEAVER RIM

11/17/2003

FREMONT COUNTY
EMERGENCY MANAGEMENT
AGENCY

18



11/17/2003

FREMONT COUNTY
EMERGENCY MANAGEMENT
AGENCY

19



11/17/2003

FREMONT COUNTY
EMERGENCY MANAGEMENT
AGENCY

20

LANDER JOURNAL

Sunday, August 13, 2000 Volume 116, Number 58

Published twice weekly in Lander, Wyo. 75 cents (less by subscription)

Blaze kills firefighter, spreading

Oklahoma man burned as fire in Owl Creeks reaches 80,000 acres

By JENNIFER HAFNER
staff writer

Six days after two fires erupted on the Wind River Indian Reservation, they continued to rage out of control, and on Friday killed the first voluntary firefighter in Wyoming this summer.

The victim, Isaac Oklahoma, was with firefighter Timmy Byington when the Kater Eakin Complex Fire engulfed their truck.

"Just as we were turning around to get away from it, the wind picked up," Byington, of

Idabel, Okla., said in a copy note from Riverton Memorial Hospital.

His companion, whose identity is not being released at the request of the family, stepped from the truck to spray water on the fire, "but it was too late," Byington said.

The victim died at the scene Friday afternoon, about 15 miles southwest of Thermopole.

Byington deployed his fire team inside the truck and started for help.

Firefighters arrived to find the truck swallowed by flames, said Assistant Thermopole Fire

Department Chief Jerry Williams. They put the fire out and pulled Byington from the truck, then found the victim's body nearby.

It appeared the victim tried to flee after leaving the truck, he said, and his fire team was found partially deployed.

Byington was burned on his hand and ear and had a foot thrust back when he was released from the hospital at 1 p.m. Saturday.

In all, six firefighters from the Oklahoma

□ Please see 'Fire,' page A-11

Weapons against a wildfire

Firefighters working to contain a forest or brush fire often have only the basic gear, but here's what a fully-equipped firefighter carries.

FIREFIGHTING TOOLS



PROTECTION AND SURVIVAL

Shovel: Protects head and neck.

Helmet:

Goggles:

Respirator: Filters out smoke and toxic gases.

Emergency shelter: Small, lightweight tent used if firefighter can't escape.



Jeffery Stancovic, a member of the Massachusetts Engine Strike Team, slept in the lobby of the Riverton Regional Airport terminal Saturday afternoon, waiting for the arrival of the rest of his team to fly into Riverton. Photo by Wayne Nichols

Crews from across country descending

By ERIN O'NEILL
staff writer

The Wyoming Fire Academy in Riverton is serving as the incident command for the Kater Eakin Complex fire now raging on a nearly 20,000-acre forest along the Owl Creek and Kater Eakin rivers.

At midday Saturday, the academy was teeming with telephone technicians, supply trucks and firefighters coming to help contain the region.

The massive forest had been threatened from a growing number of fires in recent years, including one in 1997 that burned 1,000 acres of land.

Adjacent to the fire academy and the Pioneer County Fire District headquarters along Snake River, several softball fields are being prepared for a 1,000-man fire camp. The camp will be used to feed and rest firefighters coming off the line and to train and equip

□ Please see 'Crews,' page A-11

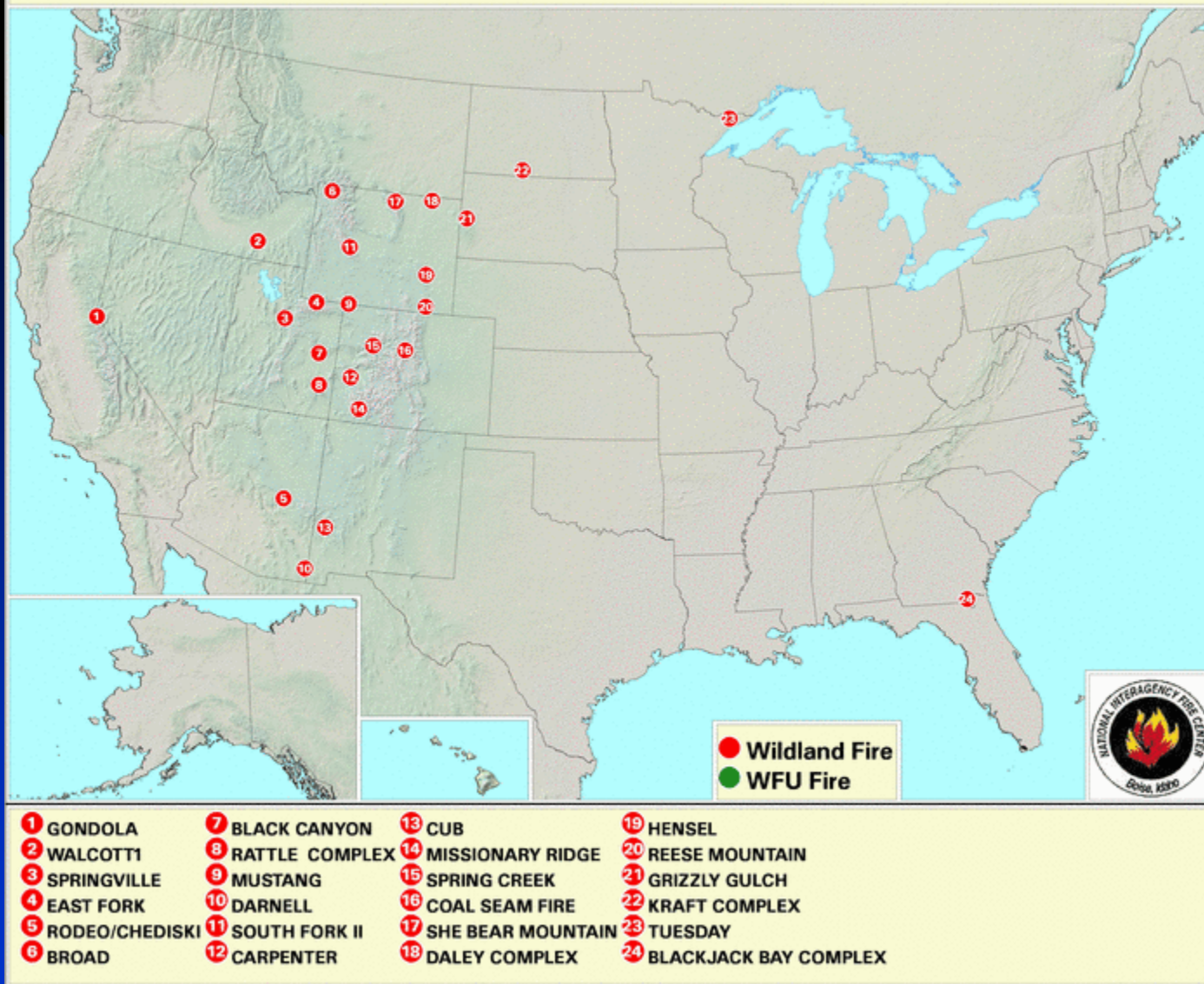
Teen is

Tractor pull

Judge tosses LPD officers' lawsuit over pay increases

FREMONT COUNTY
EMERGENCY MANAGEMENT
AGENCY

Large Incidents - July 07, 2002





11/17/2003

FREMONT COUNTY
EMERGENCY MANAGEMENT
AGENCY

23





11/17/2003

FREMONT COUNTY
EMERGENCY MANAGEMENT
AGENCY

25



SOUTH FORK 2 FIRE FT. WASHAKIE 7/12/02

11/17/2003

FREMONT COUNTY
EMERGENCY MANAGEMENT
AGENCY

26

LANDER

Informing the Lander Valley for 117 years Vol. 117, No. 90



JOURNAL

Published twice weekly in Lander, Wyoming (75 cents)

Published twice weekly in Lander, Wyoming (75 cents)

Dubois mayor worries about Togwotee rebuild

BY ERNIE OVER
staff writer

The mayor of Duluth doesn't want his town to suffer an economic depression of the likes where the timber industry left town about 15 years ago.

Duluth has 70 families there — 135 total residents — and the most familiar site in this small mountain town were vacant apartments.

The women haven't totally recovered from that loss, but now

is facing another event, six years of road construction along Tignessee Pass, U.S. Highway 26-287, the only route leading into and out of this village in the mountain foothills.

"We are just beginning to move from the kiss of those rubber jello, and now the government comes along and slaps us again. That is the problem," Bob Baker, a former state legislator, said.

There's no question that the tourism industry will be impacted negatively, especially if they don't pick up those sound sewage signs in Grand Teton National Park. They're doing a significant job of diverting traffic away from the shore area," Baker said.

They're in a road reconstruction project within the next week, meaning closure of lanes and delays for drivers there and those between the point where the warnings cause traffic to build. Motorists are not advised to avoid the road through Moose, because it's the only way to get through. Moose is a small town, but it's a major junction for traffic going north and south through Idaho, where there's a lot of traffic.

We are just beginning to recover from the loss of those timber jobs, and now the government comes along and slaps us again."

© 2001 Blackwell Science Ltd, *Journal of Internal Medicine* 250: 399–406

Drought hits fish where they live

BY CODY BEERS

If drought conditions worsen, Lauderdale fisheries biologist Kevin M. Johnson believes trout populations will suffer.

When two years of drought finally hangs on, water levels drop, and fish feel the effects.

His life and death.

Minus good snow levels and water flows next summer, continuing drought would be devastating for Fresno County fisheries.

"Fish were definitely stressed quite a bit this summer," said Johnson, Wyoming Game and Fish fisheries biologist in Lander, "because of (warmer) temperatures in the 80s."

If water is there next summer,
Game and Fish will stock more fish.

"We have stocking plans in place. In some years like this, we've had to cut back and change those stocking plans because the water hasn't been available."

"Water is the key," Johnson said. "Another year of less water, and we have the potential to see significant fish losses," he said.

We're hoping for a good snow
in this winter. It will take an
average winter for us to catch
fishermen's attention. Meanwhile,

can recharge aquifers. It may control parts of these types of aquifers, but the question is...

the normal level of 11.9 inches. In Riverton, normal precipitation levels are 8.14 inches; this year, Riverton has received just 3.28 inches.

Anglers have noticed. "Definitely in some areas, there are few people out there fishing. People are realizing that fishing can be real successful to fish, especially catch-and-release fishing, with real low water," Johnson said.

Kevin Johnson is a Lauder angler who worries about the drought. He has no connection to the Game and Fish fisheries biologist, Kevin M. Johnson, despite sharing the same name.

"Fishing is going to be different, especially if we stay dry like we are right now," Kevin Johnson said. "Without [moisture], it won't be a pretty one. There's only one solution to it: If we don't have a winter, it [the fishing] is just going to be more."

Biologist Kevin M. Johnson said many smaller streams can dry this past summer all over Fremont County. A prime example is Strawberry Creek in the Sweetwater river drainage, which has "completely dried up" the last two years.

Another example is Carmody served on Beaver River. Carmody wrote on abundant rainfall and art springs for his water.

"It is probably true, the fish population went," the fisheries biologist said. "It is more or less like that. But the number is."



Our kids are at risk: How taxes are helping

FREMONT COUNTY
EMERGENCY MANAGEMENT
AGENCY

GOVERNOR'S DROUGHT TASK FORCE

- CLIMATIC MONITORING
WORKING GROUP
 - ◆ TECHNICAL EXPERTS
 - ★ Water Supply Forecast
 - ★ Basin Outlook Report
 - ★ Reservoir Storage Report
 - ★ Weekly Crop Weather Report
 - ★ Drought Forecast Information

GOVERNOR'S DROUGHT TASK FORCE

■ SUB WORKING GROUPS

- ◆ Ag & Natural Resource
- ◆ Drinking Water, Health & Energy
- ◆ Wildfire Protection
- ◆ Tourism & Economic
- ◆ Communication

GOVERNOR'S DROUGHT TASK FORCE

- WYOMING DROUGHT PLAN
 - ◆ Identifies drought management entities
 - ◆ Provides timely drought impact info
 - ◆ Defines processes for drought monitoring impact assessment
 - ◆ Identifies long/short time goals to mitigate drought
 - ◆ Acts as catalyst for local planning

Drought Planning 10 Steps

- Step 1
 - ◆ Appoint a Drought Task Force
- Step 2
 - ◆ State the purpose and Objectives of the Drought Plan
- Step 3
 - ◆ Seek stakeholder participation and resolve conflict

Drought Planning 10 Steps

- Step 4
 - ◆ Inventory Resources and identify groups at risk
- Step 5
 - ◆ Develop organizational structure and prepare drought plan
- Step 6
 - ◆ Integrate Science and Policy, close institutional gaps

Drought Planning 10 Steps

- Step 7
 - ◆ Publicize the proposed plan, solicit reaction
- Step 8
 - ◆ Implement the plan
- Step 9
 - ◆ Develop educational programs
- Step 10
 - ◆ Post-Drought Evaluation

Board of Fremont County Commissioners Drought Task Force

- SUB WORKING GROUP
 - ◆ Agriculture
 - ◆ Health & Safety (Drinking Water)
 - ◆ Wildland Fire
 - ◆ Economic
 - ◆ Public Relations

Vision Statement

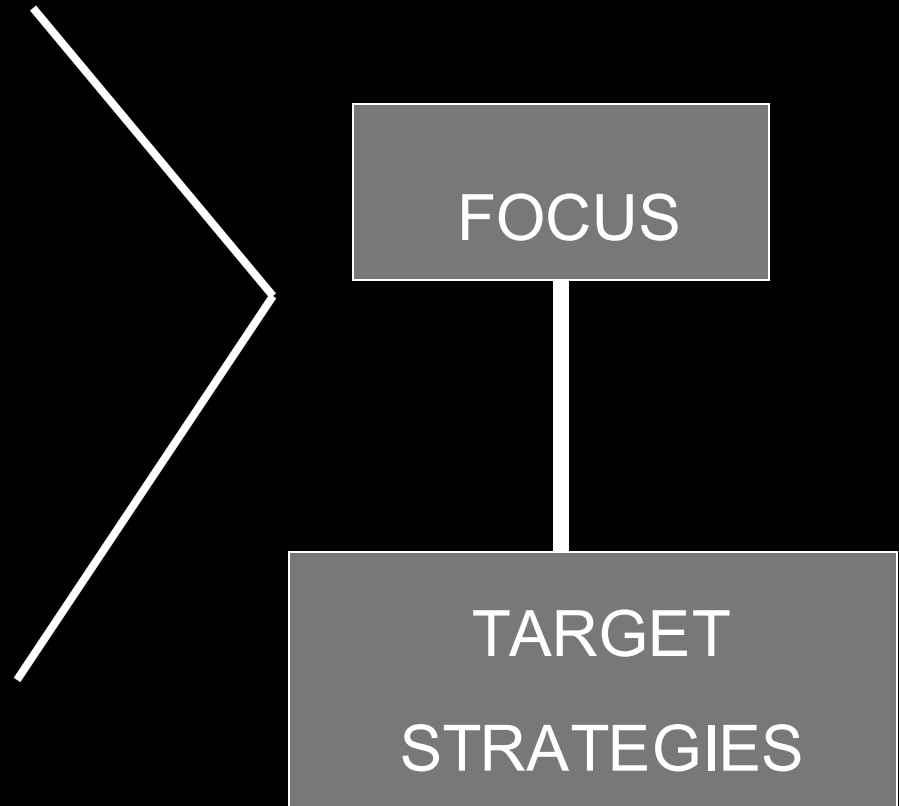
- Create a “*Drought Proof*” county by focusing on citizen stakeholders who possess the energy to work together to identify solid solutions. The end result is the creation of a ***Community Action Plan*** that will solve drought problems in Fremont County Wyoming

Goal and Objective

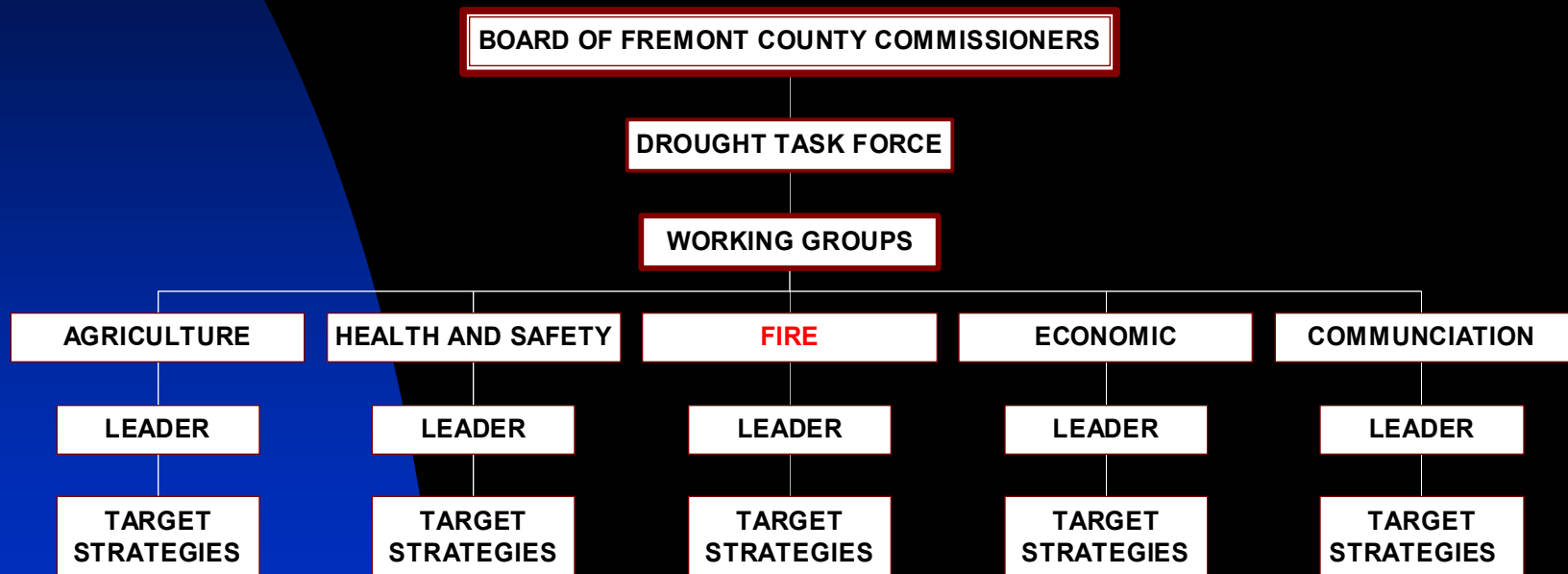
- *Drought Proof* Fremont County
- Create a Task Force
 - ◆ Sub-Working Groups
 - ◆ Specific Strategies and Targets
 - ◆ Community Action Plan to Execute
 - ◆ Follow-up and Revise

SUB-WORKING GROUPS

- AGRICULTURE
- PUBLIC HEALTH AND SAFETY
- WILDLAND FIRE
- ECONOMIC DEVELOPMENT
- COMMUNICATION



DROUGHT TASK FORCE ORGANIZATIONAL CHART



TARGET STRATEGY

FREMONT COUNTY COMMISSIONERS

DROUGHT TASK FORCE

WORKING GROUPS

AGRICULTURE

RANGELAND MANAGEMENT

WATER CONSERVATION

SOIL CONSERVATION

UP-STREAM STORAGE

TIMBERING/GRAZING

HEALTH AND SAFETY

DRINKING WATER

WATER QUALITY

ENVIRONMENTAL HEALTH

MENTAL HEALTH

PEACE KEEPING

FIRE

FIRE PREVENTION

WILDLAND/URBAN INTERFACE

PRE-SCRIBED BURNING

DEFENSIBLE SPACE

WATER MANAGEMENT

ECONOMIC

ECONOMIC DEVELOPMENT

RETAIL TRADE

SMALL BUSINESS

TOURISM

CONTINUITY OF GOVERNMENT

COMMUNICATION

PUBLIC HEARINGS

PUBLIC WORKSHOPS

MEDIA RELATIONS

PUBLIC SERVICE
ANNOUNCEMENTS

EMERGENCY PUBLIC INFORMATION

FREMONT COUNTY
EMERGENCY MANAGEMENT
AGENCY