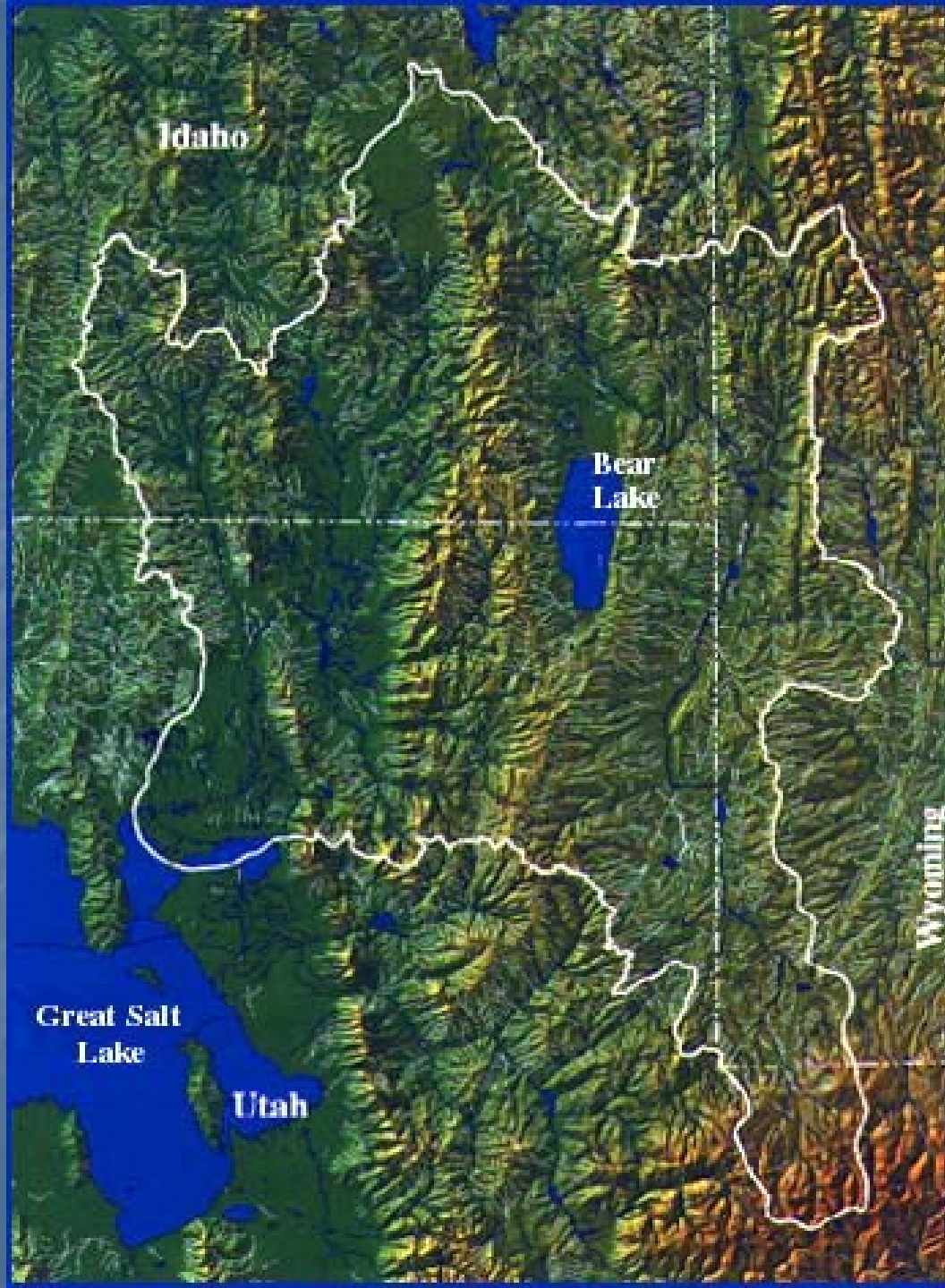


# Bear River

Dee C. Hansen, P.E.

Chairman

Bear River Commission



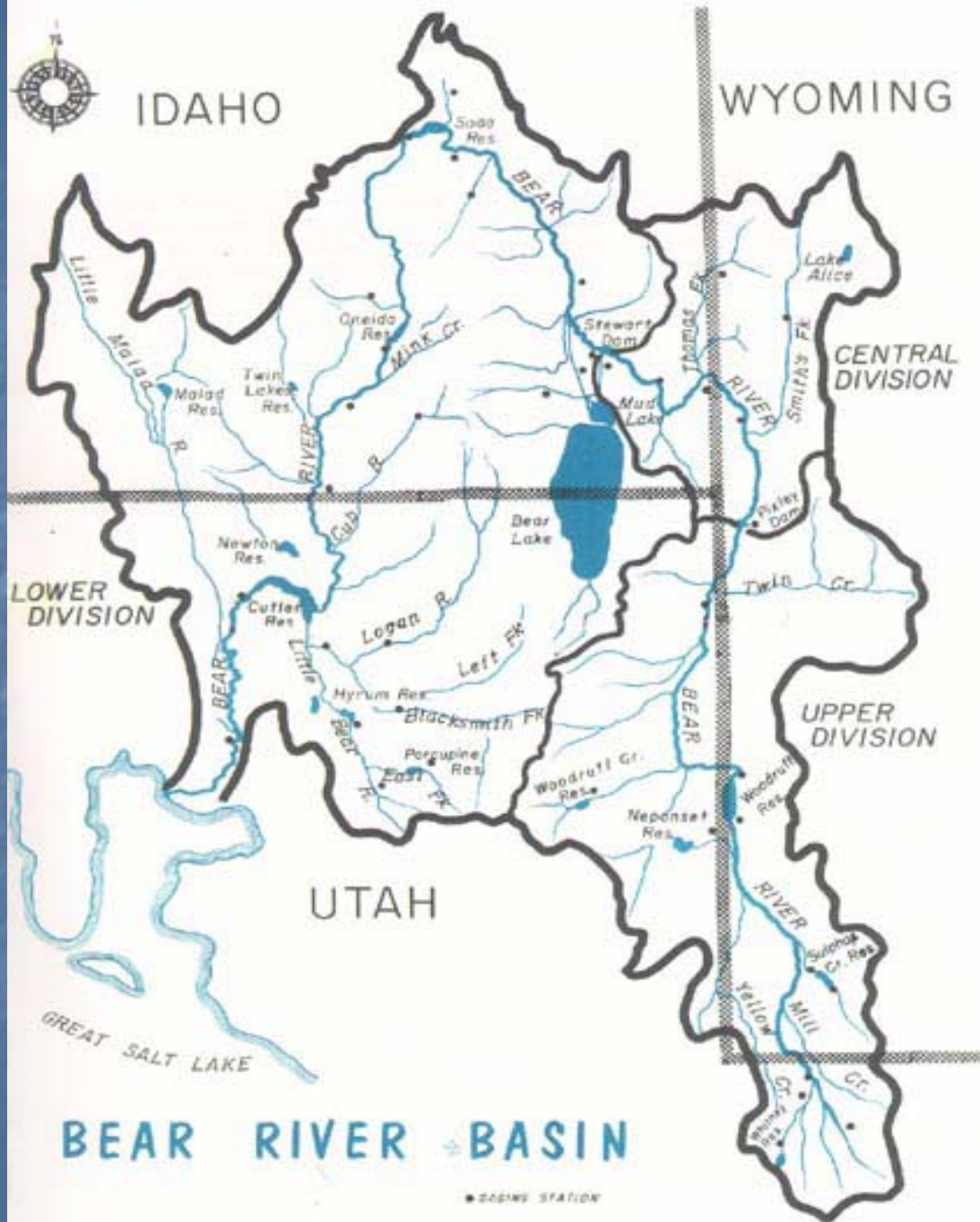
# BEAR RIVER STORAGE RES.

- WHITNEY RESERVOIR
- SULPHUR CREEK RESERVOIR
- WOODRUFF NARROWS RESERVOIR
- BEAR LAKE (Diversion from Bear River)
- SODA RESERVOIR (Power storage only)
- ONIEDA NARROWS (Power storage only)
- CUTLER DAM & RESERVOIR
  - Contract with Utah-Idaho Sugar Co. for water delivery



IDAHO

WYOMING



LOWER DIVISION

CENTRAL DIVISION

UPPER DIVISION

UTAH

GREAT SALT LAKE

# BEAR RIVER BASIN

● GAGING STATION



BEAR RIVER HIGH FLOWS



WHITNEY RESERVOIR



WOODRUFF NARROWS RESERVOIR



BEAR LAKE (useable storage capacity 1,421,000 Acre Feet)





LIFTON PUMPING PLANT



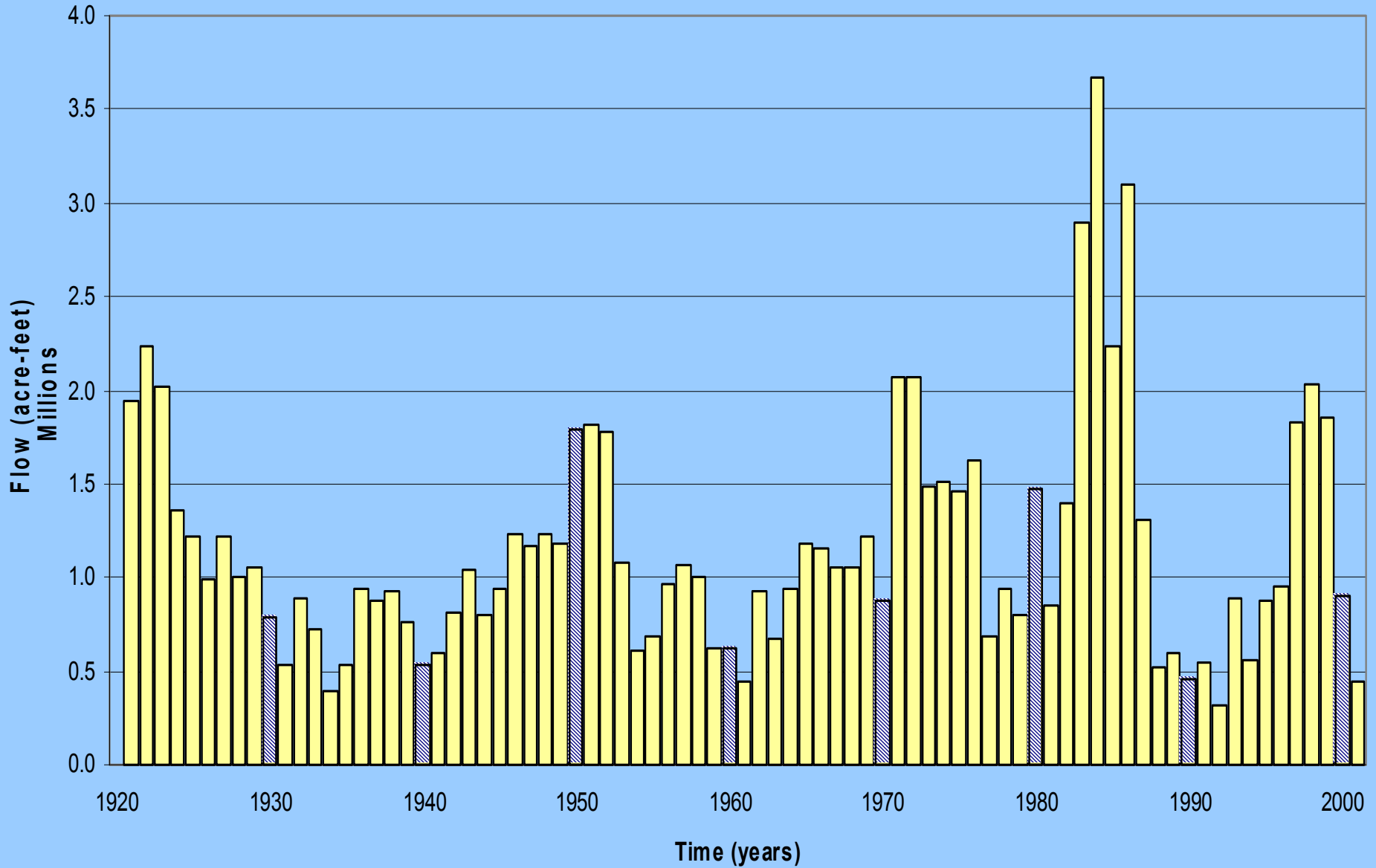
CUTLER DAM & RESERVOIR



BEAR RIVER VALLEY-UTAH

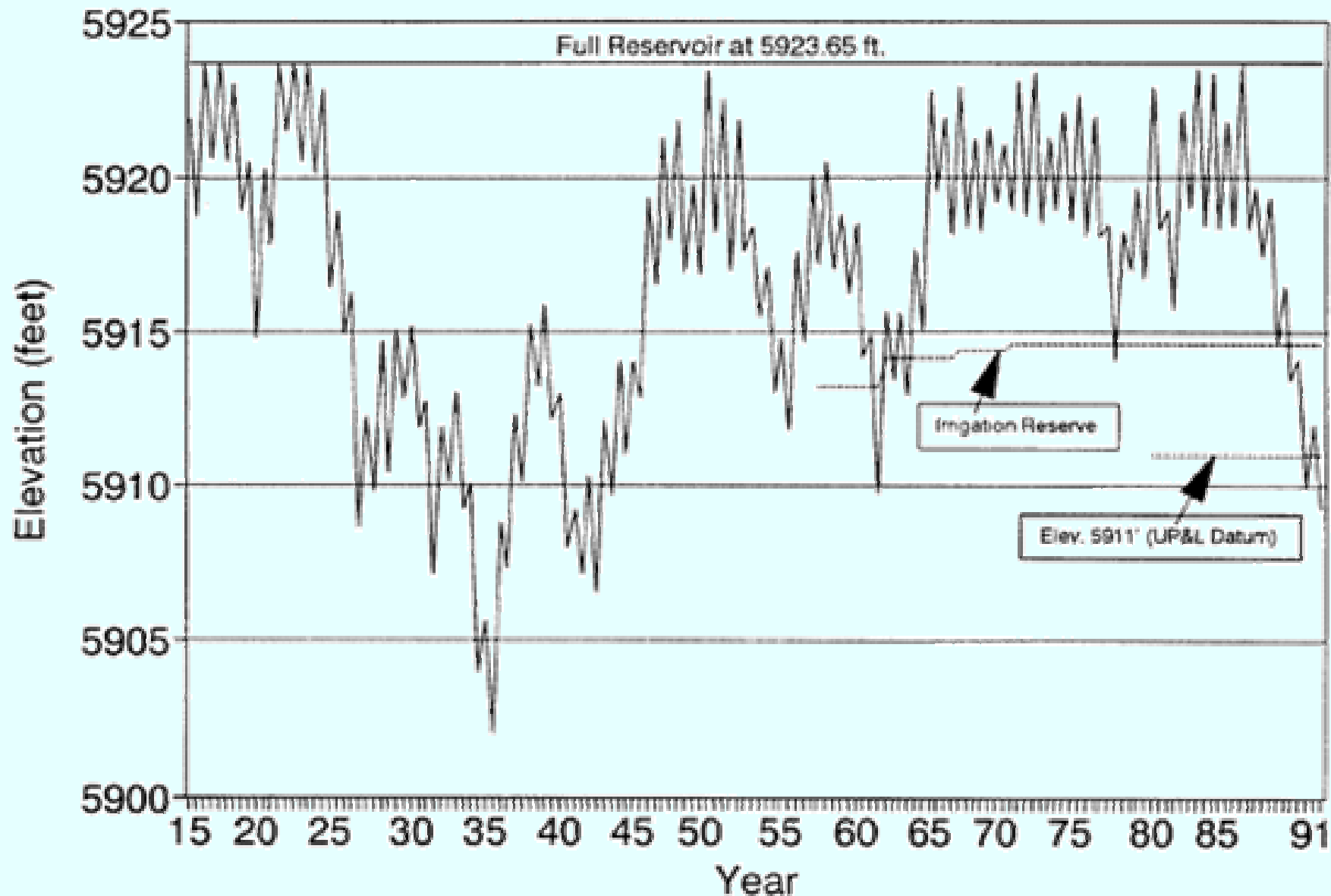
# Annual Flows

## Bear River near Corrine



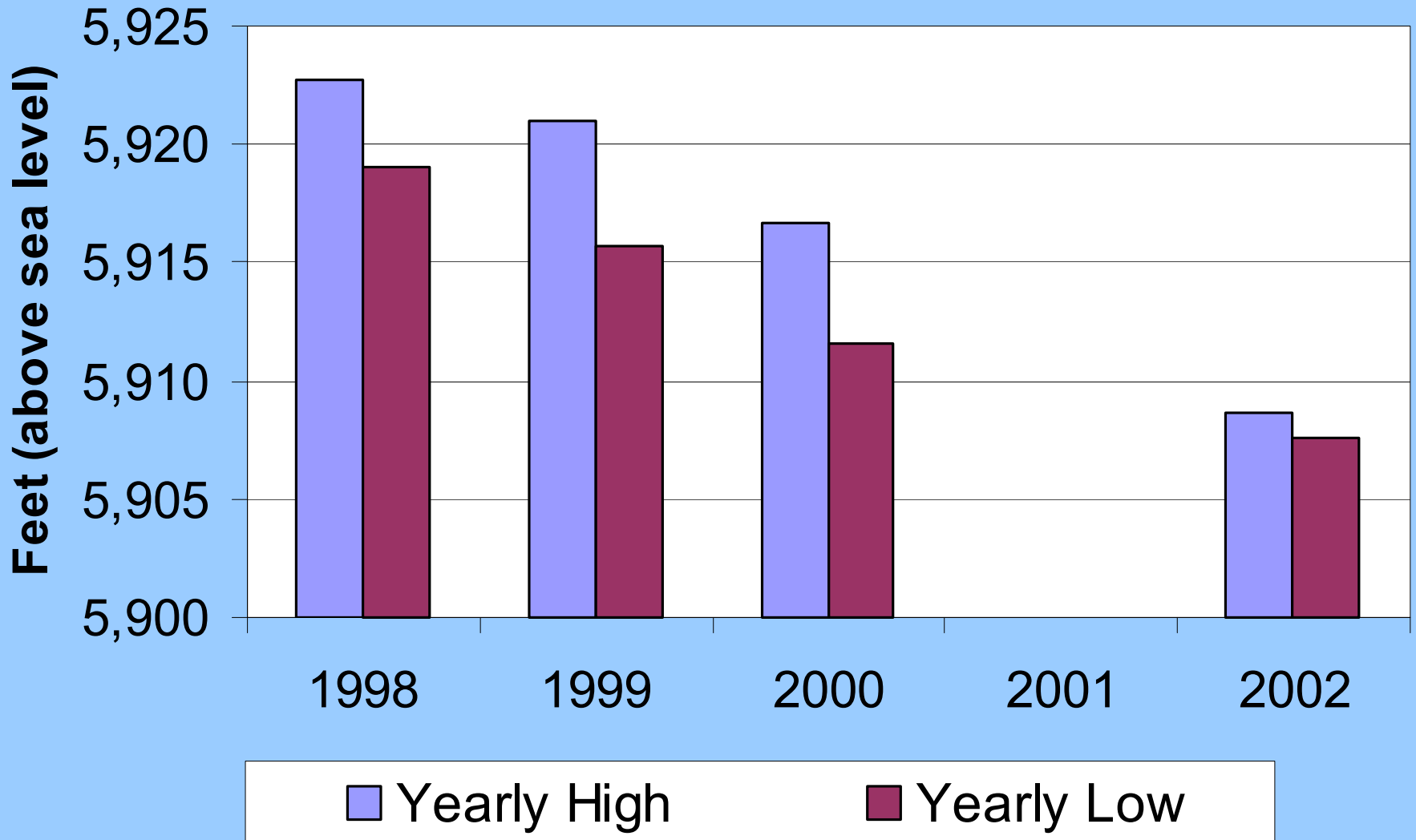
# BEAR LAKE ELEVATION

## ANNUAL MAXIMUM & MINIMUM ELEVATIONS



# Bear Lake Elevation

## Annual Maximum & Minimum Elevations



# Bear River History

## A. Upper Division Compact 1958

1. Provided for 36,500 Acre Feet of storage

## B. Lower Division Compact 1980

1. Provided for 70,000 Ac. Ft. ½ to Utah ½ to Wyoming, also provided for 4500 Ac. Ft. to Idaho.
2. Depletion allowance of 28,000 Ac. Ft. (13,000 each to Utah & Wyoming & 2,000 Ac. Ft. to Idaho).
3. Below Bear Lake, Idaho shall have the first right to 125,000 Ac.Ft., Utah shall have the next right to 275,000 Ac.Ft., Utah & Idaho shall have the right to deplete 75,000 Ac.Ft. each annually, any remaining water shall be divided on a percentage of 30% to Idaho and 70% to Utah.

# SUMMARY & CONCLUSIONS

QUESTIONS ???