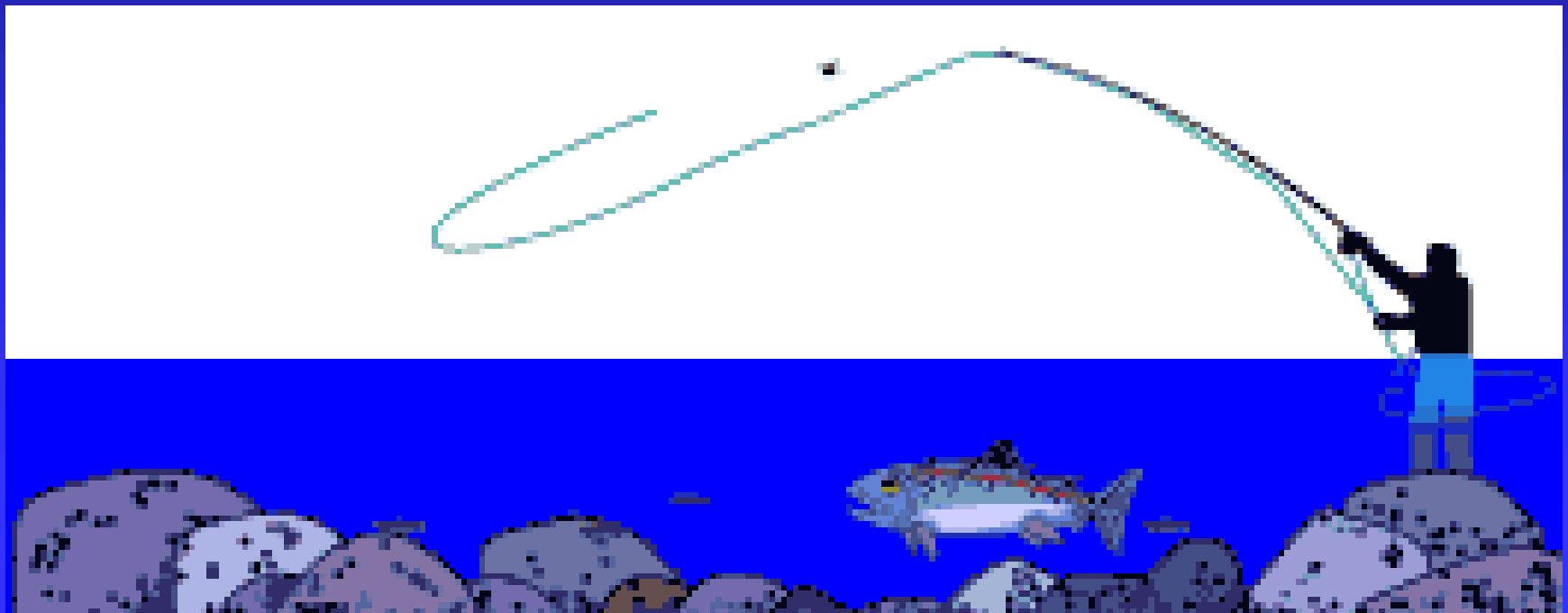


Instream Flows in the Bear River Basin

Paul Dey, Wyoming Game and Fish Department

Bear River Basin Instream Flows

- Basis
- Review the segments
- Questions



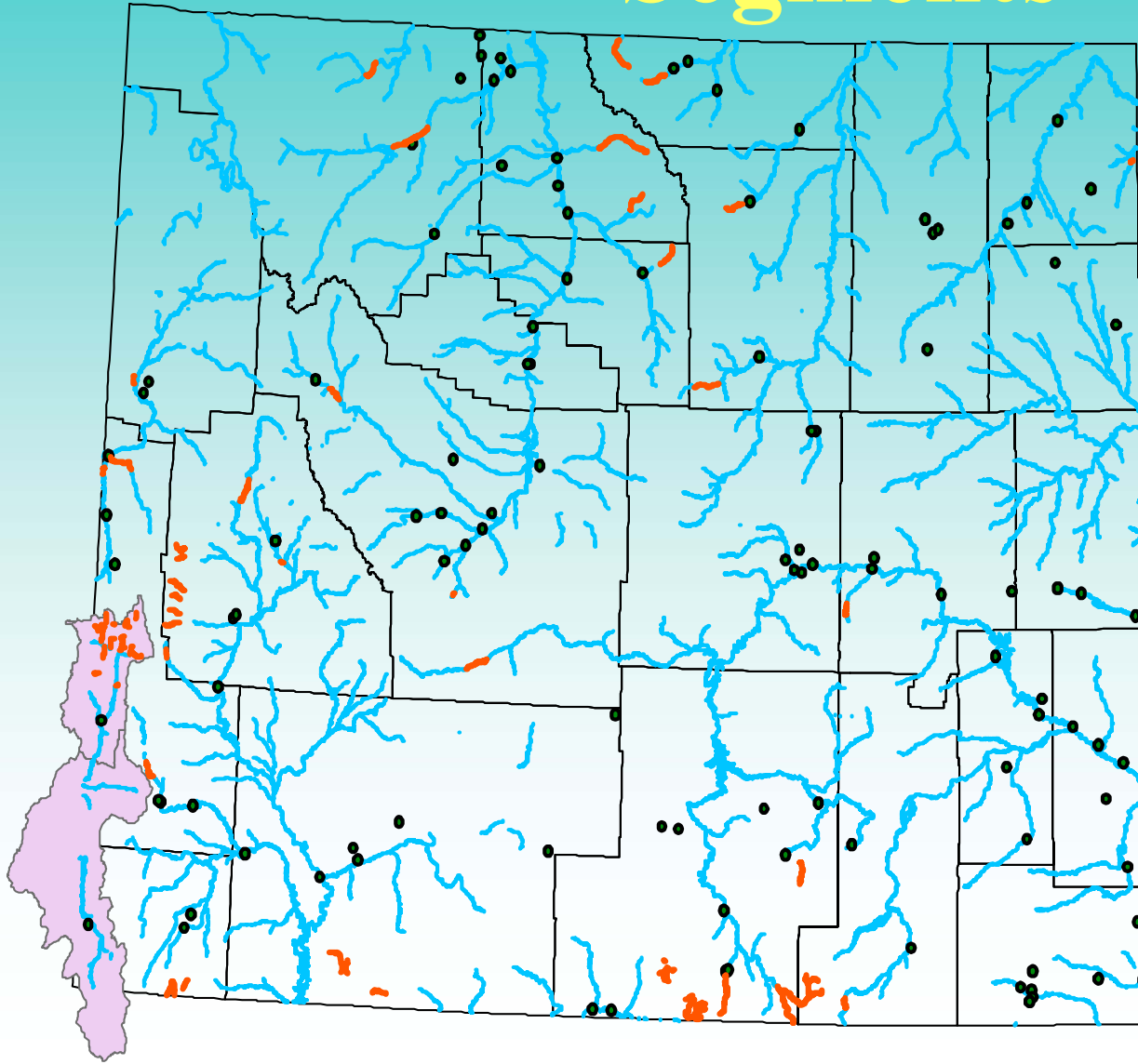
Fish Division Mission

"As stewards of Wyoming's aquatic resources, we are committed to **conservation** and enhancement of all aquatic wildlife and their habitats **for future generations** through **scientific** resource management and informed public participation. We will use an integrated program of **protection**, regulation, propagation, restoration, and control **to provide diverse, quality fisheries resources** and angling opportunities. Our efforts will balance the productive capacity of habitats with public desires "

Our Charge...

- “...report...those segments of stream which ...have the most critical need for instream flows” (from 41-3-1003(b))
- We have interpreted this to mean “important” sport fisheries like the Green River and Hams Fork
- More recently, native trout fisheries – Yellowstone, Bonneville and Colorado River Cutthroat trout.

Statewide Instream Flow Segments



— 83 segments
covering 390 miles

— Segments range
from 0.1 to 22.3
miles in length

— Priority dates
range from 1986 to
June 2002

Instream Flow Segments

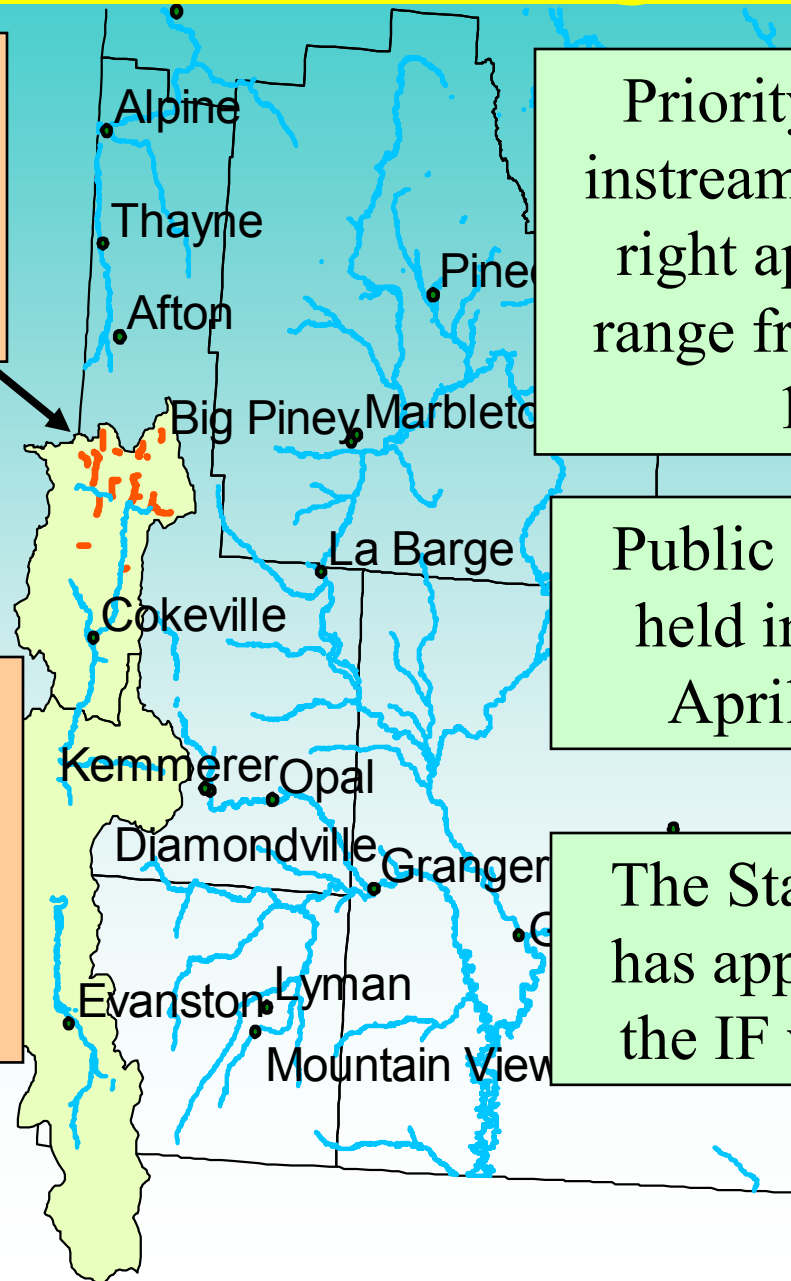
17 segments in the upper Thomas Fork and Smiths Fork drainages

Priority dates for instream flow water right applications range from 1995 to 1997

Public hearing was held in Cokeville April 27, 1999

The State Engineer has approved 12 of the IF water rights

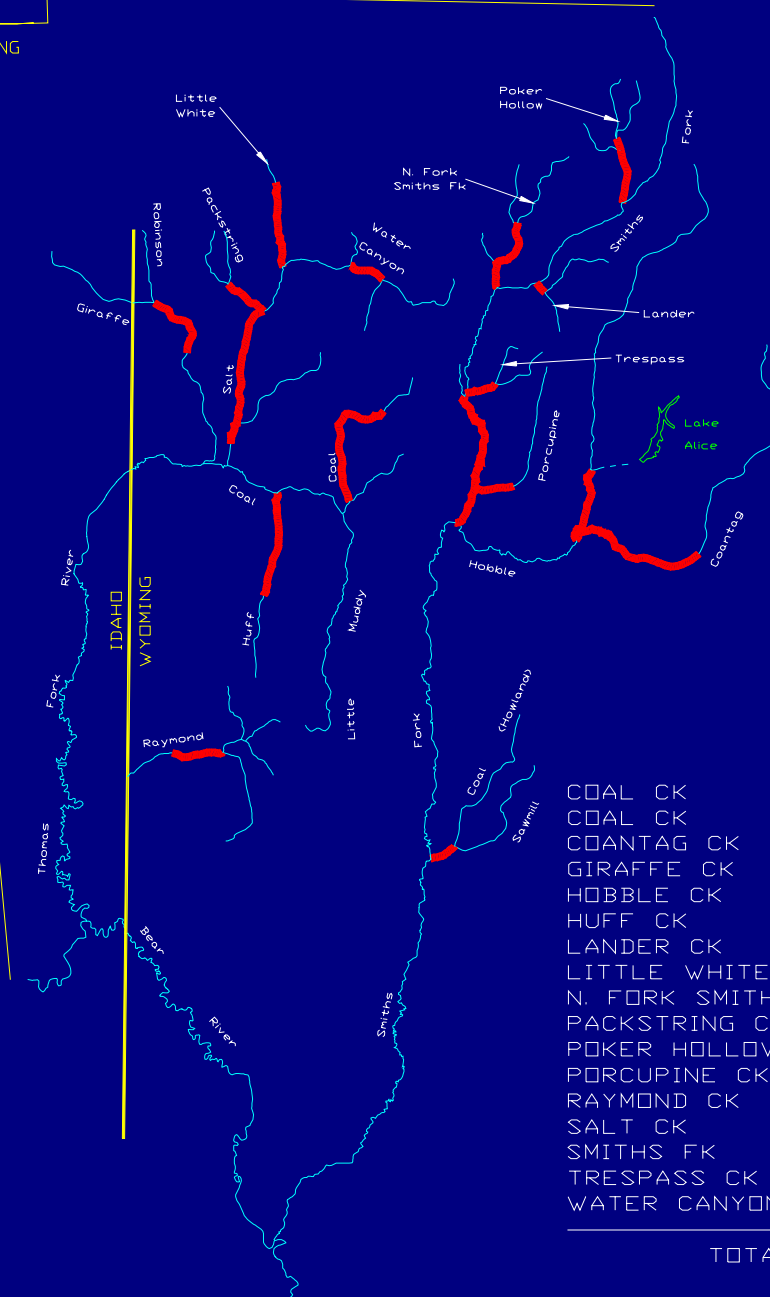
Studies to define instream flow quantities were conducted in the years 1993 - 1996



Bonneville cutthroat trout IF stream reaches:
with instream flow water right applications.



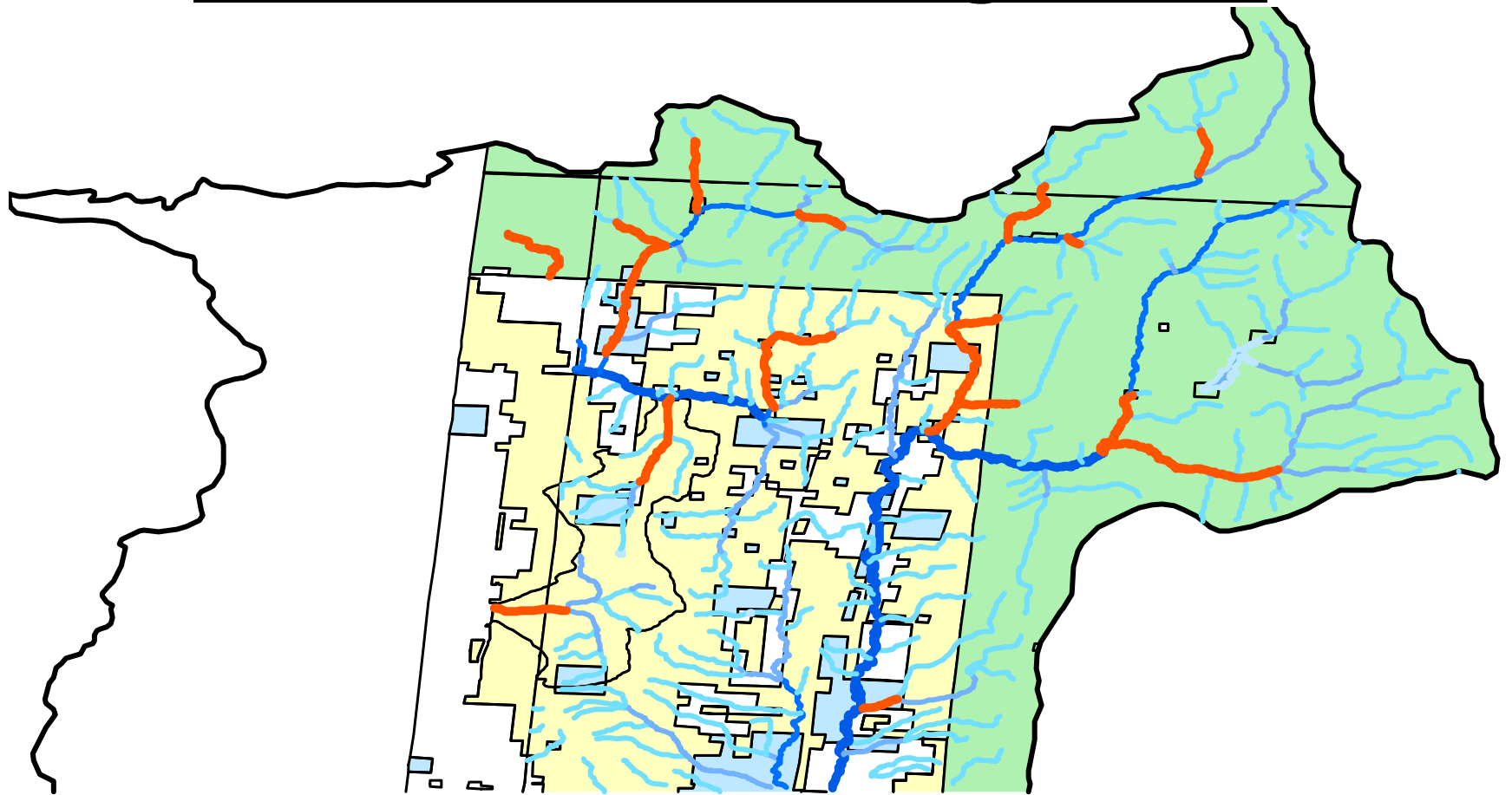
WYOMING



COAL CK	0.8
COAL CK	4.2
COANTAG CK	4.9
GIRAFFE CK	2.4
HOBBLE CK	2.7
HUFF CK	3.0
LANDER CK	0.5
LITTLE WHITE CK	2.2
N. FORK SMITHS FK	2.5
PACKSTRING CK	1.0
POKER HOLLOW CK	2.5
PORCUPINE CK	1.3
RAYMOND CK	1.7
SALT CK	4.5
SMITHS FK	5.0
TRESPASS CK	0.9
WATER CANYON CK	1.2

TOTAL = 41.3 MI

Instream Flow Segments







December 2000 - Conservation Agreement

- Agencies involved - Idaho, Nevada, Utah, Wyoming, USFWS, National Park Service, USFS, Tribal agencies and the Utah Reclamation Mitigation and Conservation commission

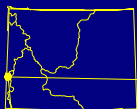


Activities Past and Present - BRC

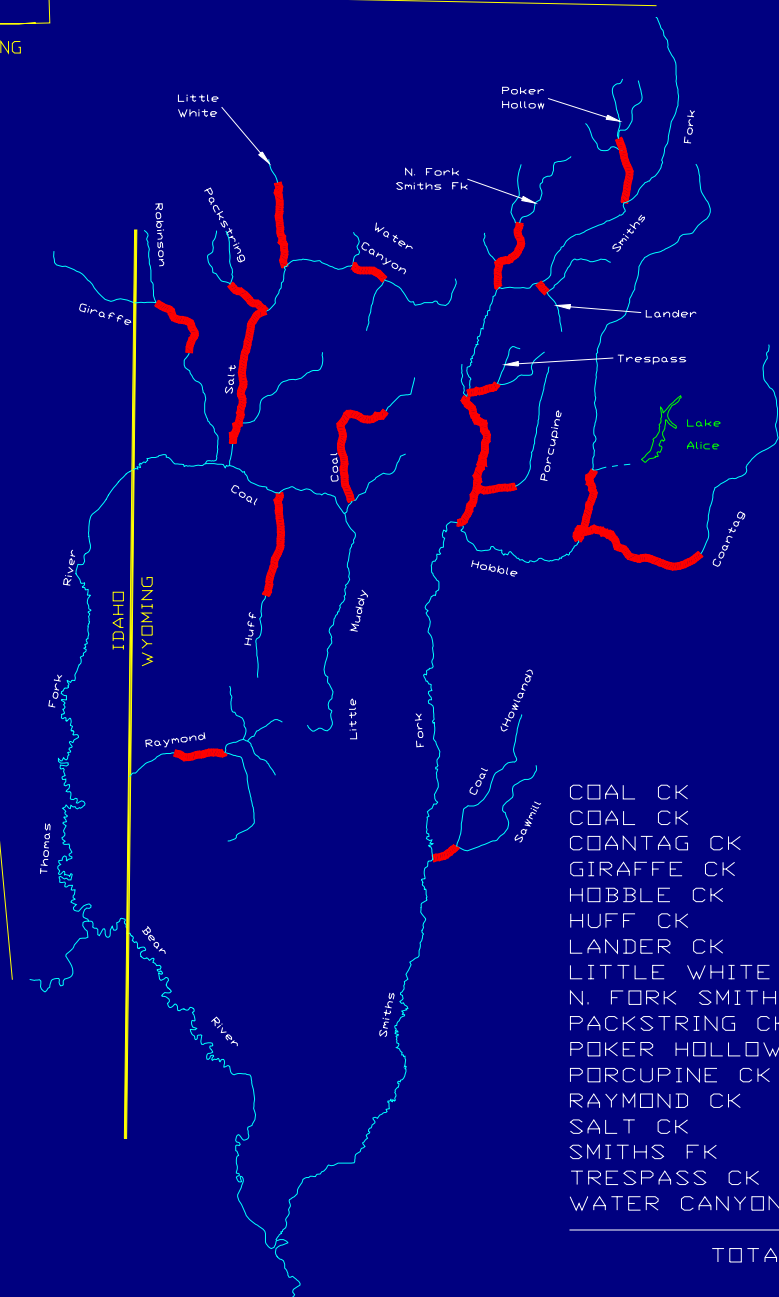
- Routine population surveys and life history research
- Habitat surveys and improvements
- Instream flow filings
- BRC brood and stocking
- Nonnative trout removal
- Fishing regulations
- Information and education



Bonneville cutthroat trout IF stream reaches:
with instream flow water right applications.



WYOMING



COAL CK	0.8
COAL CK	4.2
COANTAG CK	4.9
GIRAFFE CK	2.4
HOBBLE CK	2.7
HUFF CK	3.0
LANDER CK	0.5
LITTLE WHITE CK	2.2
N. FORK SMITHS FK	2.5
PACKSTRING CK	1.0
POKER HOLLOW CK	2.5
PORCUPINE CK	1.3
RAYMOND CK	1.7
SALT CK	4.5
SMITHS FK	5.0
TRESPASS CK	0.9
WATER CANYON CK	1.2

TOTAL = 41.3 MI

















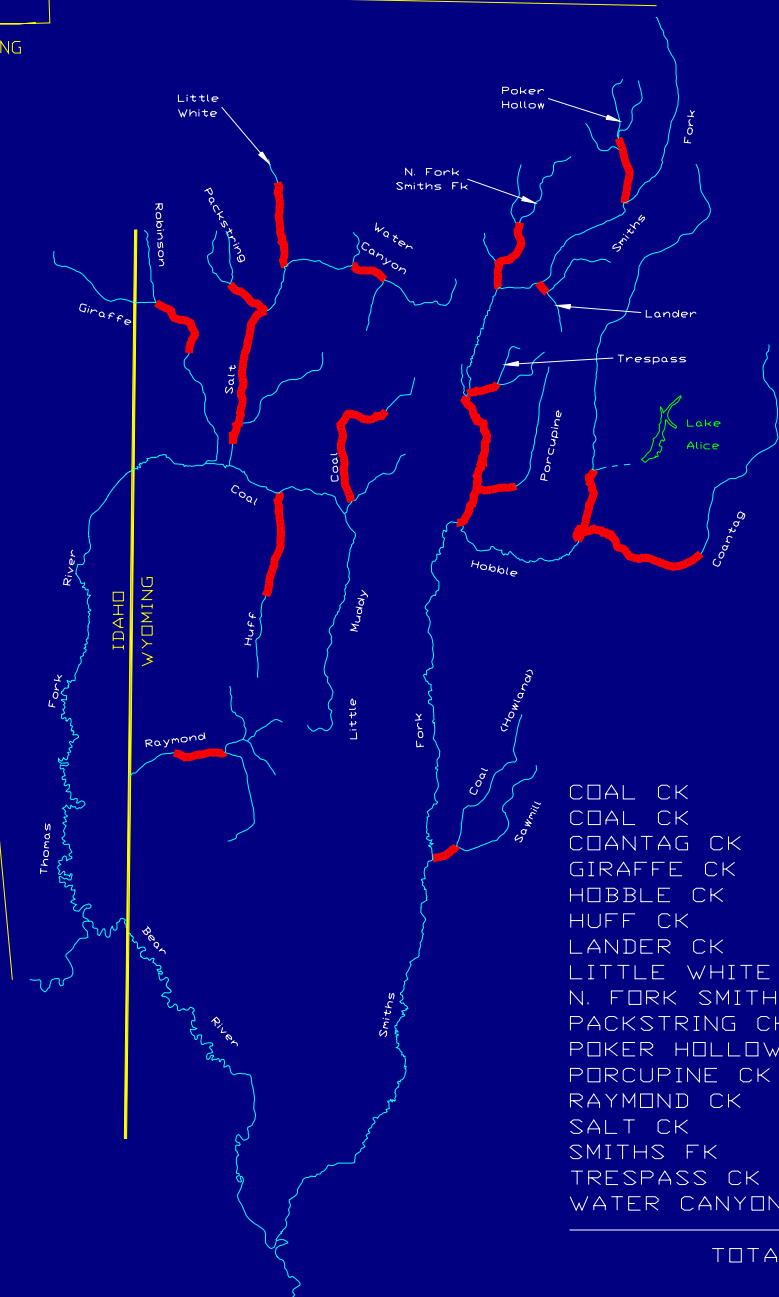




Bonneville cutthroat trout IF stream reaches:
with instream flow water right applications.



WYOMING



COAL CK	0.8
COAL CK	4.2
COANTAG CK	4.9
GIRAFFE CK	2.4
HOBBLE CK	2.7
HUFF CK	3.0
LANDER CK	0.5
LITTLE WHITE CK	2.2
N. FORK SMITHS FK	2.5
PACKSTRING CK	1.0
POKER HOLLOW CK	2.5
PORCUPINE CK	1.3
RAYMOND CK	1.7
SALT CK	4.5
SMITHS FK	5.0
TRESPASS CK	0.9
WATER CANYON CK	1.2

TOTAL = 41.3 MI





Lander Creek



