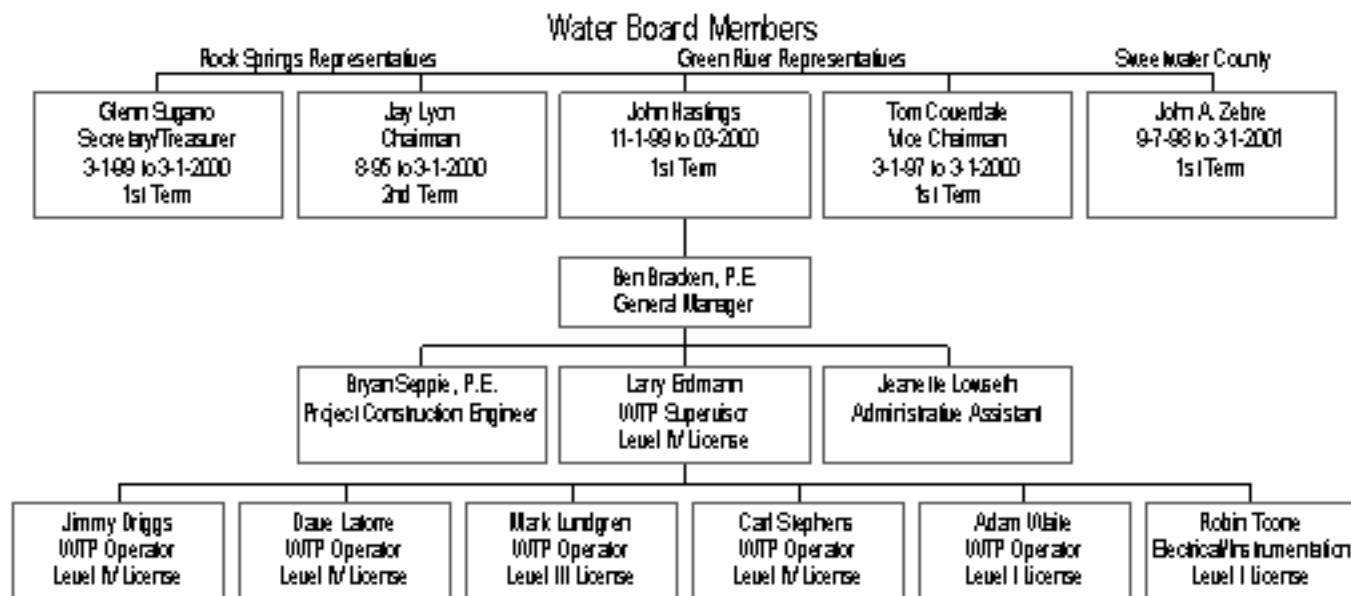


Joint Powers Water Board



**GREEN RIVER - ROCK SPRINGS - SWEETWATER COUNTY
JOINT POWERS WATER BOARD**

| | | |
|-------------|---|---------------|
| 1986 | Joint Powers Agreement..... | Feb. 6, 1986 |
| 1987 | Amended and Restated Joint Powers Agreement of the Board..... | Aug. 4, 1987 |
| | Purchase and Sale Contract between PP&L and Board..... | Nov. 3, 1987 |
| 1988 | Indenture of Trust from Board to Trustee..... | Feb. 15, 1988 |
| | Water Purchase Agreements between..... | Feb. 15, 1988 |
| | Board and City of Green River Board and City of Rock Springs | |
| | Lease, Operation, Maintenance, Service and Management Agreement between Board and Cities..... | Feb. 15, 1988 |
| | Closing Documents delivered by Board..... | Feb. 29, 1988 |
| 1995 | Water Purchase Agreements between Board and..... | Aug. 15, 1995 |
| | a) Clearview Improvement and Service District, b) White Mountain Water and Sewer District, c) Ten Mile Water and Sewer District | |
| 1996 | Water Purchase Agreement between Board and SF Phosphate..... | Jul. 16, 1996 |
| | Rules, Regulations and Standards for System Operations..... | Jul. 29, 1996 |

**GREEN RIVER - ROCK SPRINGS- SWEETWATER COUNTY
JOINT POWERS WATER BOARD**

| | | |
|--------------|---------------------------|---------------|
| 1987 | State Grant..... | 11,000,000.00 |
| 1988 | Series 1988 Bonds..... | 12,615,000.00 |
| 1991 | WWDC Loan/Grant..... | 23,000,000.00 |
| 1994 | WWDC Loan/Grant..... | 4,000,000.00 |
| 1995 | State Loan..... | 24,000,000.00 |
| 1995 | AML..... | 18,880,000.00 |
| 1996* | Series 1996 Bonds..... | 9,580,000.00 |
| 1999 | State Revolving Fund..... | 4,000,000.00 |
| 1999* | Series 1999 Bonds..... | 26,165,000.00 |
| 1999 | WWDC Loan/Grant..... | 1,075,000.00 |

* Refunding Revenue bonds to repay Series 1988 Bonds

** Refunding Revenue bonds to repay 1995 State Loan

**GREEN RIVER - ROCK SPRINGS - SWEETWATER COUNTY
JOINT POWERS WATER BOARD**

Green River Distribution System

- 4,499 Customers (meters)
- 340,000 + feet of water mains (4" to 18")
- 4 Booster Pump Stations
- Reservoirs (5mg)

Rock Springs Distribution System

- 6,569 Customers (meters)
- 550,000 ± feet of water mains (4" to 18")
- 5 Booster pump stations
- 10 Reservoirs (1.2 MGD)

Rock Springs Transmission Lines

- 68,000 feet 20 inch asbestos cement pipe line
- 65,000 feet 30 inch steel pipe line (15.8 MGD)

Water Treatment Plant

- 32 MGD Capacity
- Intake Facility (8- 60 hp pumps)
- Ozonation
- Chemical feed - ferric sulfate and non-ionic polymer
- 3 Up flow clarifiers (IDI Superpulstar)
- 12 Filters (granular activated carbon)
- 2 One million gallon clearwells
- Chlorination
- Finished water pump station (7- 400 hp pumps and 5- 200hp pumps)
- Solids handling facility

WATER USAGE FOR ROCKSPRINGS, GREEN RIVER, DISTRICTS, SF PHOSPHATES

(in Million Gallons) multiply by 1,000,000

| RATES : | | | | | | |
|--------------------------------|--------------|-------------|-----------|------------|---|----------|
| FY 98-99 0.9236/ccf 0.7957/ccf | | | | | | |
| FY 99-00 0.9790/ccf 0.8434/ccf | | | | | | |
| RS Rates Apply | | | | | | |
| 1999 | | | Ortlyng | SF | | |
| Mb. Consumed | Rock Springs | Green River | Districts | Phosphates | = | TOTAL |
| January | 119.142 | 52.1953 | 6.823 | 0.000 | | 178.121 |
| February | 107.074 | 40.542 | 5.966 | 0.000 | | 153.182 |
| March | 118.042 | 46.032 | 6.935 | 0.000 | | 171.009 |
| April | 116.900 | 45.268 | 6.446 | 0.000 | | 168.614 |
| May | 167.300 | 72.082 | 7.533 | 2.720 | | 249.635 |
| June | 253.396 | 128.682 | 9.573 | 0.000 | | 391.5978 |
| July | 295.112 | 157.201 | 12.653 | 7.688 | | 472.654 |
| August | 223.744 | 138.052 | 9.465 | 24.337 | | 395.598 |
| September | 145.041 | 85.863 | 6.305 | 19.105 | | 256.314 |
| October | 97.581 | 55.868 | 6.019 | 55.369 | | 215.837 |
| November | 143.607 | 43.565 | 5.669 | 97.523 | | 290.364 |
| December | 138.582 | 46.360 | 6.273 | 37.182 | | 228.417 |
| Year Total | 1925.465 | 911.694 | 89.260 | 244.924 | | 3171.343 |

| RATES: | | | | | | |
|--------------------------------|--------------|-------------|-----------|------------|---|-------|
| FY 99-00 0.9790/ccf 0.8434/ccf | | | | | | |
| FY 00-01 | | | | | | |
| RS Rates Apply | | | | | | |
| 2000 | | | Ortlyng | SF | | |
| Mb. Consumed | Rock Springs | Green River | Districts | Phosphates | = | TOTAL |
| January | 0.000 | 0.0000 | 0.000 | 0.000 | | 0.000 |
| February | 0.000 | 0.000 | 0.000 | 0.000 | | 0.000 |
| March | 0.000 | 0.000 | 0.000 | 0.000 | | 0.000 |
| April | 0.000 | 0.000 | 0.000 | 0.000 | | 0.000 |
| May | | | | | | 0.000 |
| June | | | | | | 0.000 |
| July | | | | | | 0.000 |
| August | | | | | | 0.000 |
| September | | | | | | 0.000 |
| October | | | | | | 0.000 |
| November | | | | | | 0.000 |
| December | | | | | | 0.000 |
| Year Total | 0.000 | 0.000 | 0.000 | 0.000 | | 0.000 |

| RATES : | | | | | | |
|----------------|--------------|-------------|-----------|------------|---|-------|
| FY 00-01 | | | | | | |
| FY 01-02 | | | | | | |
| RS Rates Apply | | | | | | |
| 2001 | | | Ortlyng | SF | | |
| Mb. Consumed | Rock Springs | Green River | Districts | Phosphates | = | TOTAL |
| January | | | | | | 0.000 |
| February | | | | | | 0.000 |
| March | | | | | | 0.000 |
| April | | | | | | 0.000 |
| May | | | | | | 0.000 |
| June | | | | | | 0.000 |
| July | | | | | | 0.000 |
| August | | | | | | 0.000 |
| September | | | | | | 0.000 |
| October | | | | | | 0.000 |
| November | | | | | | 0.000 |
| December | | | | | | 0.000 |
| Year Total | 0.000 | 0.000 | 0.000 | 0.000 | | 0.000 |

MONTHLY AVERAGES FOR:

1999 453.04896

2000 0.000

2001 0.000

