

# RECLAMATION

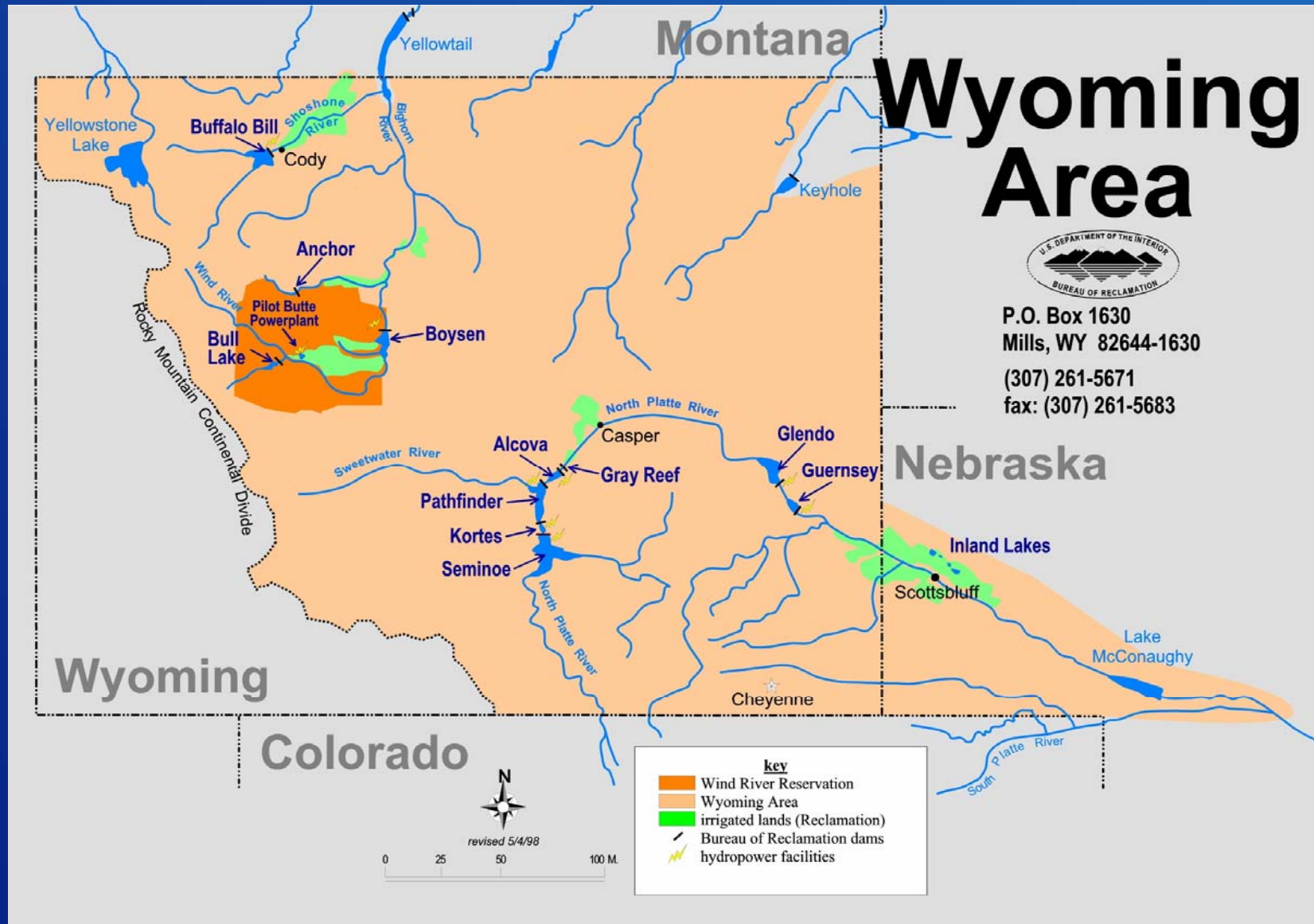
## WY Water Update – Wind/Bighorn River Basin

Wyoming  
Area  
Office



# RECLAMATION

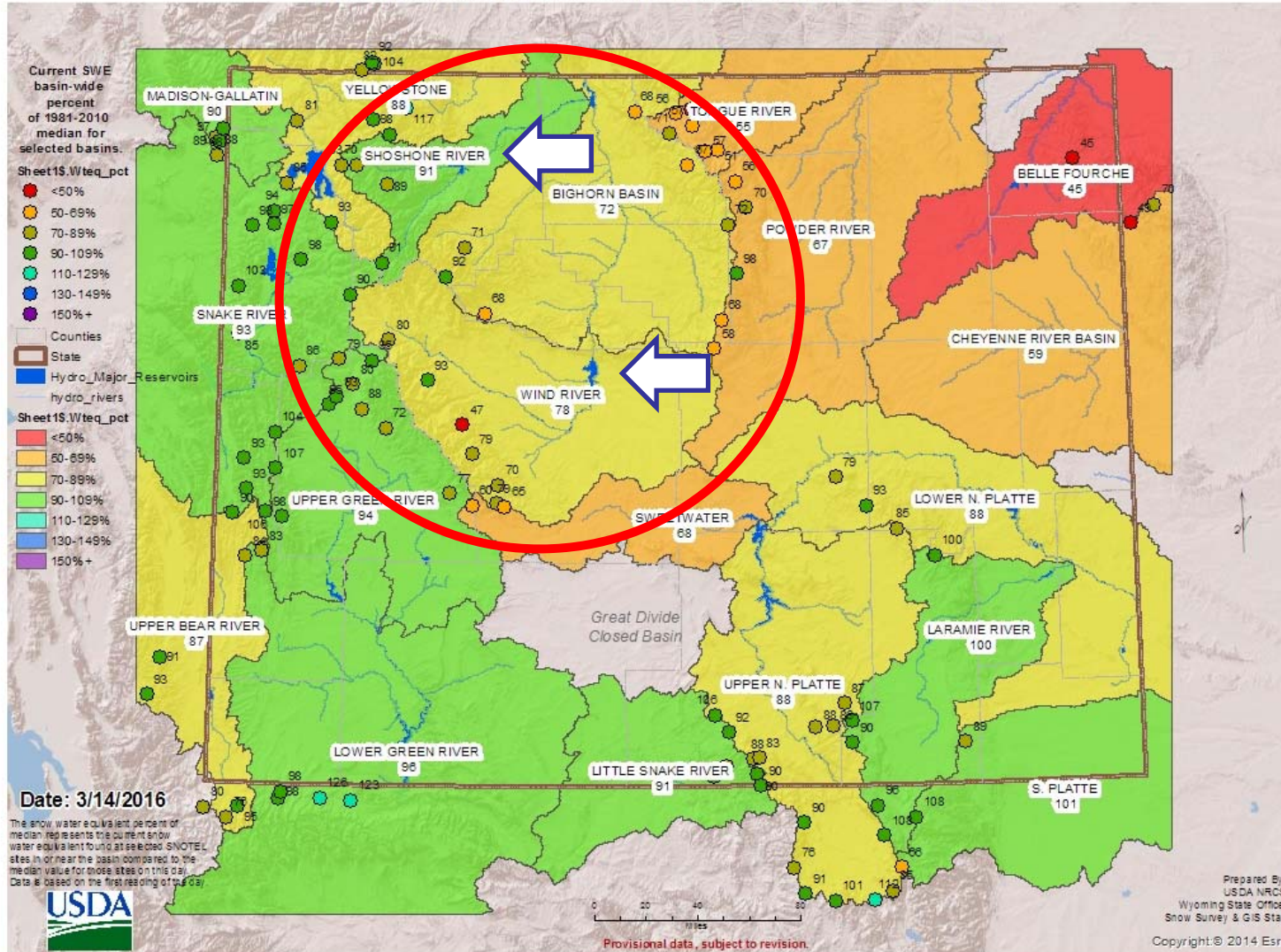
# Wyoming Area Office



# RECLAMATION

# Current State River Basin Report

Wyoming SNOTEL Current Snow Water Equivalent (SWE) % of Median



# RECLAMATION

## NRCS Monday Snow Report (March 14, 2016)

DRAINAGE BASIN	3/14/2016	3/7/2016	2/29/2016	3/14/2015	3/14/2014	3/14/2013
SNAKE RIVER	93	93	94	95	144	89
MADISON	90	87	87	73	114	93
YELLOWSTONE	88	87	89	99	147	92
WIND RIVER	78	79	82	90	135	84
BIGHORN BASIN	72	72	74	105	148	91
SHOSHONE RIVER	91	93	93	99	153	91
POWDER	67	69	72	114	150	96
TONGUE	55	59	62	100	133	88
BELLE FOURCHE	45	80	82	66	125	85
CHEYENNE	59	80	80	77	127	86
UPPER N. PLATTE	88	88	89	81	122	79
SWEETWATER	68	69	75	73	120	71
LOWER N. PLATTE	88	88	96	81	116	66
LARAMIE	100	101	102	87	140	81
S. PLATTE	101	99	99	91	139	81
LITTLE SNAKE RIVER	91	90	92	76	118	78
UPPER GREEN	94	95	97	107	168	82
LOWER GREEN	96	95	98	86	131	83
UPPER BEAR	87	90	92	72	118	74
Weighted State Average	81	84	87	91	136	84

red = down

blue = up

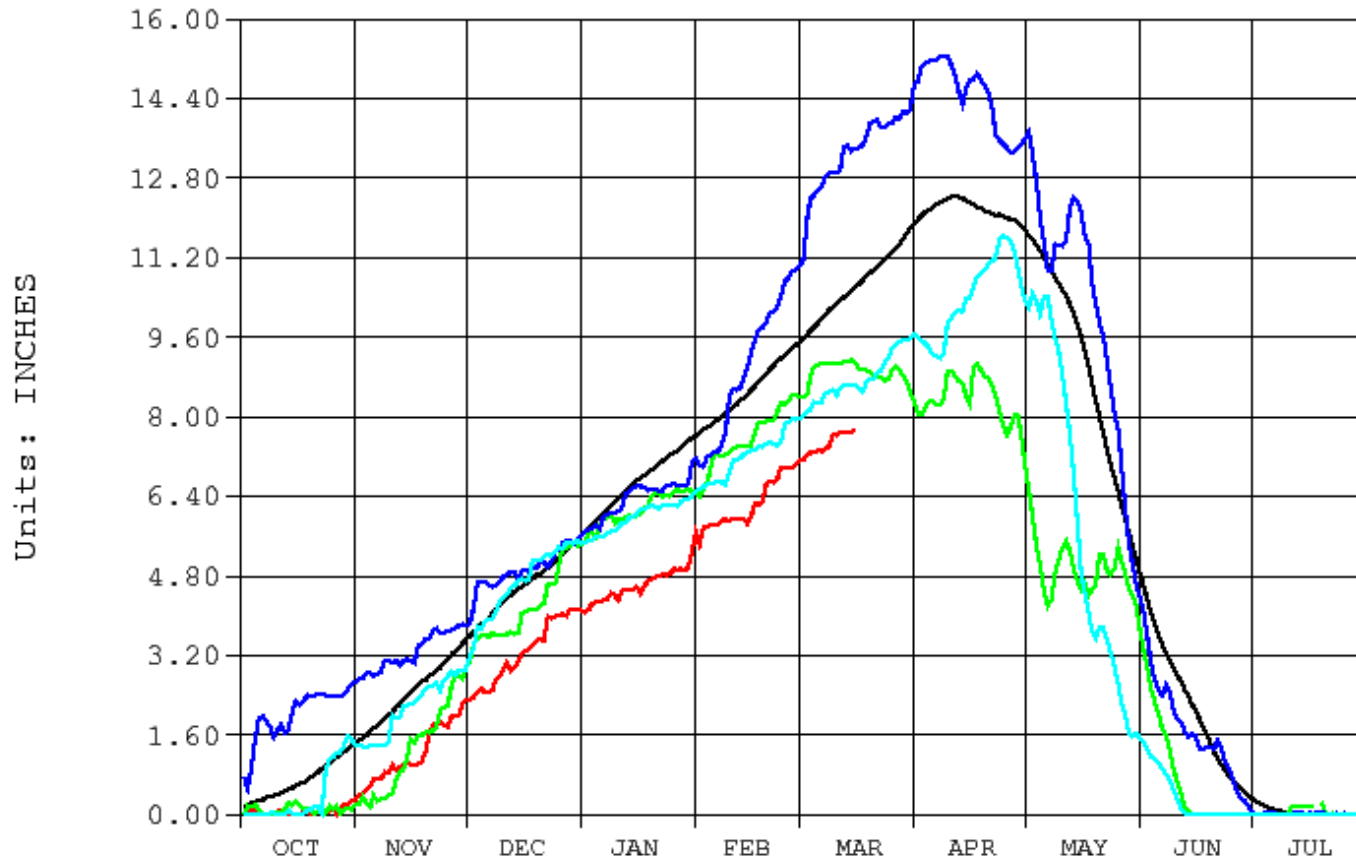
green = same

\* data is suspect

# RECLAMATION

# Current Snow Report – Basin Above Boysen Reservoir

Archive Data From 1-OCT Through 31-JUL  
 Plotted 03/14/2016 11:08 (Provisional Data Subject to Revision)



BOYR Boysen Reservoir, Wind River near Thermopolis, WY  
 SE\_AVG Snow Water Equivalent Average (inches)  
 SE Snow Water Equivalent (inches)

2015  
 2016 2015 2014  
 2013

Water Year	April-July Inflow (acre-feet)
2013	216,300
2014	694,500
2015	749,700
2016	350,000 (64% of ave)
<b>Average = 548,300 (1986-2015)</b>	

# RECLAMATION

# Boysen Reservoir Inflow Forecast

(1000 acre-feet)

Forecast Points	March 1, 2016 Forecast of April-July Runoff			30 Yr. April-July	Expected	Comparative Actual April - July Runoff			
	Reasonable Minimum <sup>1</sup>	Expected	Reasonable Maximum <sup>1</sup>	Runoff Avg. <sup>2</sup>	% of Avg.	W. Yr. 2015	W. Yr. 2014	W. Yr. 2013	W. Yr. 2012
	<b>Boysen Reservoir</b>	200	350	600	548.3	64	750	695	216

<sup>1</sup> The probability is estimated to be 9 chances in 10 that the actual volume will fall between the reasonable minimum and reasonable maximum.

<sup>2</sup> Average is based on the 1986-2015 period.

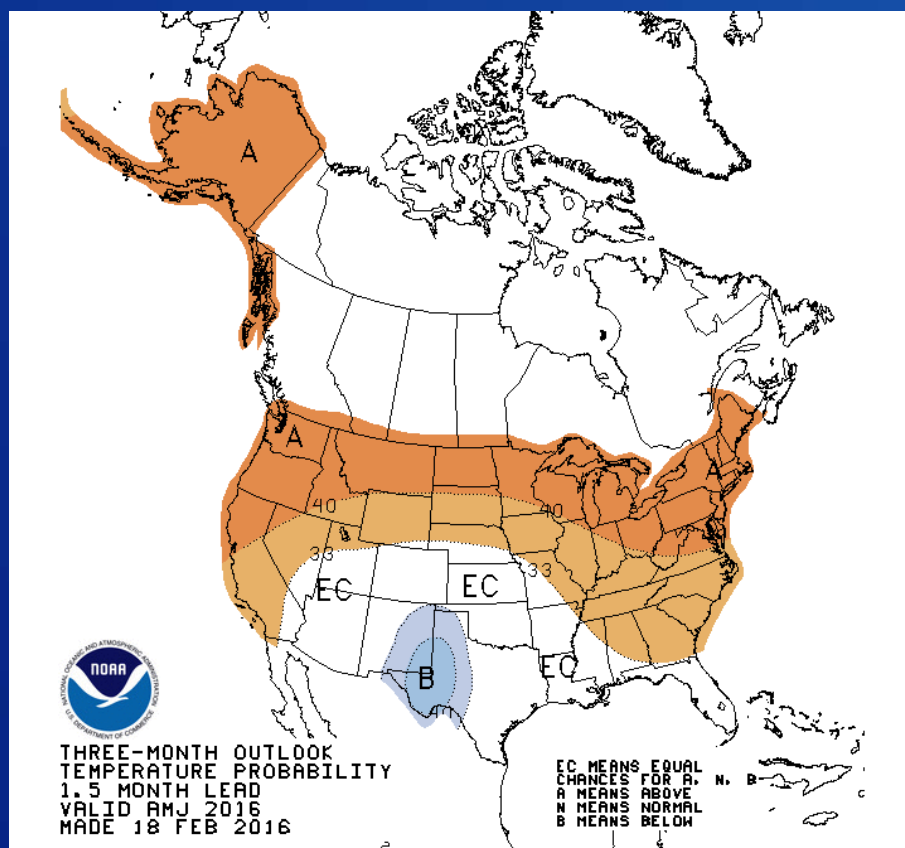
RECLAMATION

### Years with accounting for Boysen water *(since 2000)*

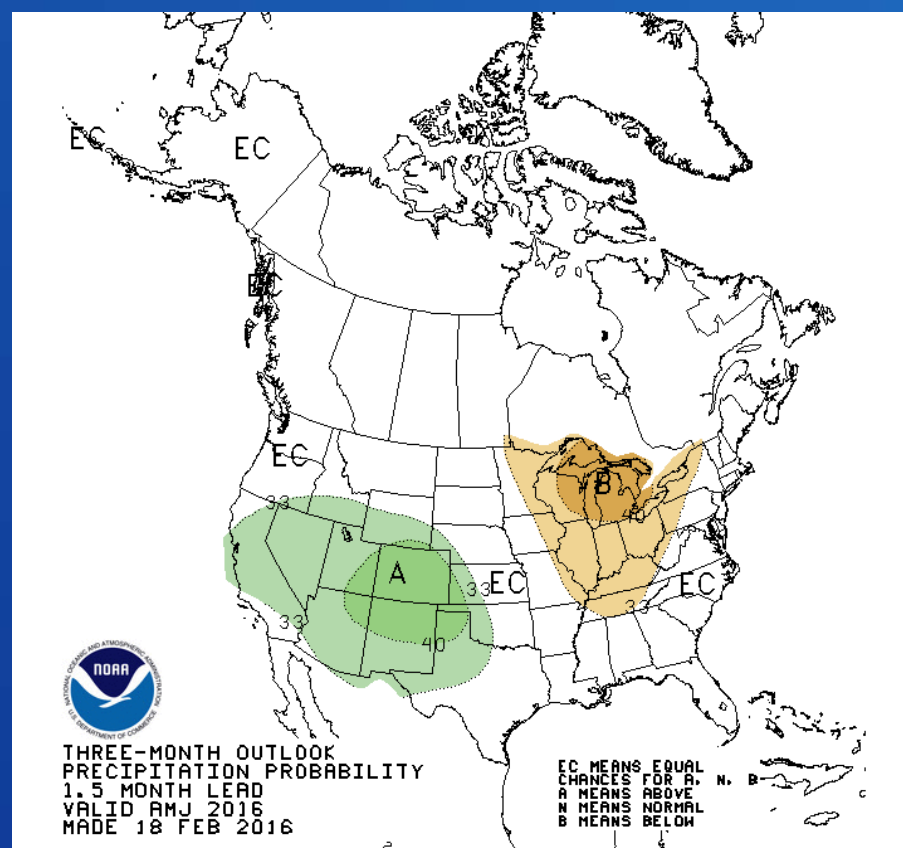
- 2000
- 2001
- 2002
- 2003
- 2004
- 2006
- 2007
- 2012
- 2013

# NWS Outlook Apr-May-June

## Temperature



## Precipitation



# RECLAMATION



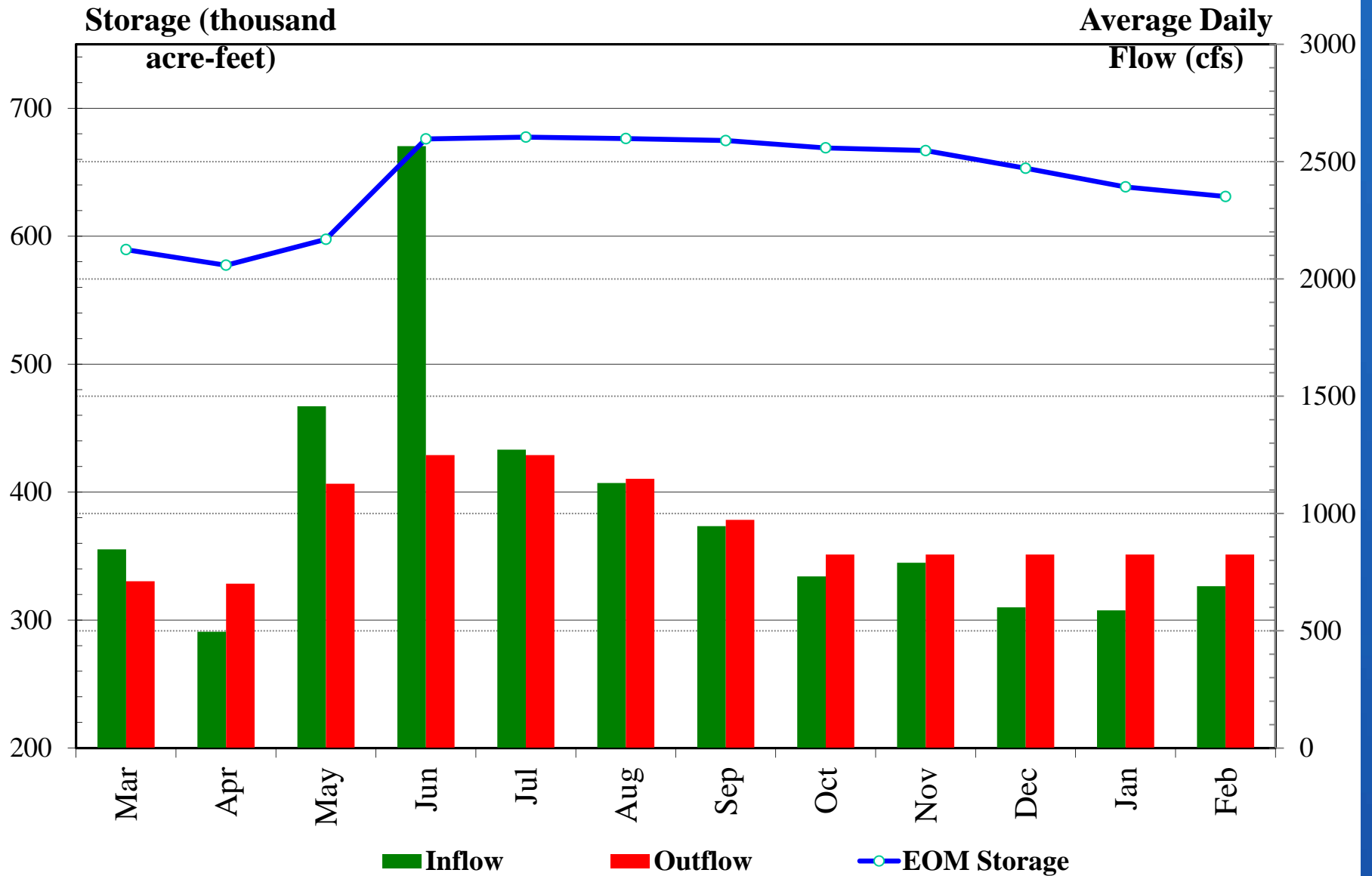
## Current Conditions at Boysen Reservoir, as of March 13, 2016

---

Elevation	4716.40 ft
Storage	587,665 AF
% Full	79 %
% of Daily Ave.	111 %

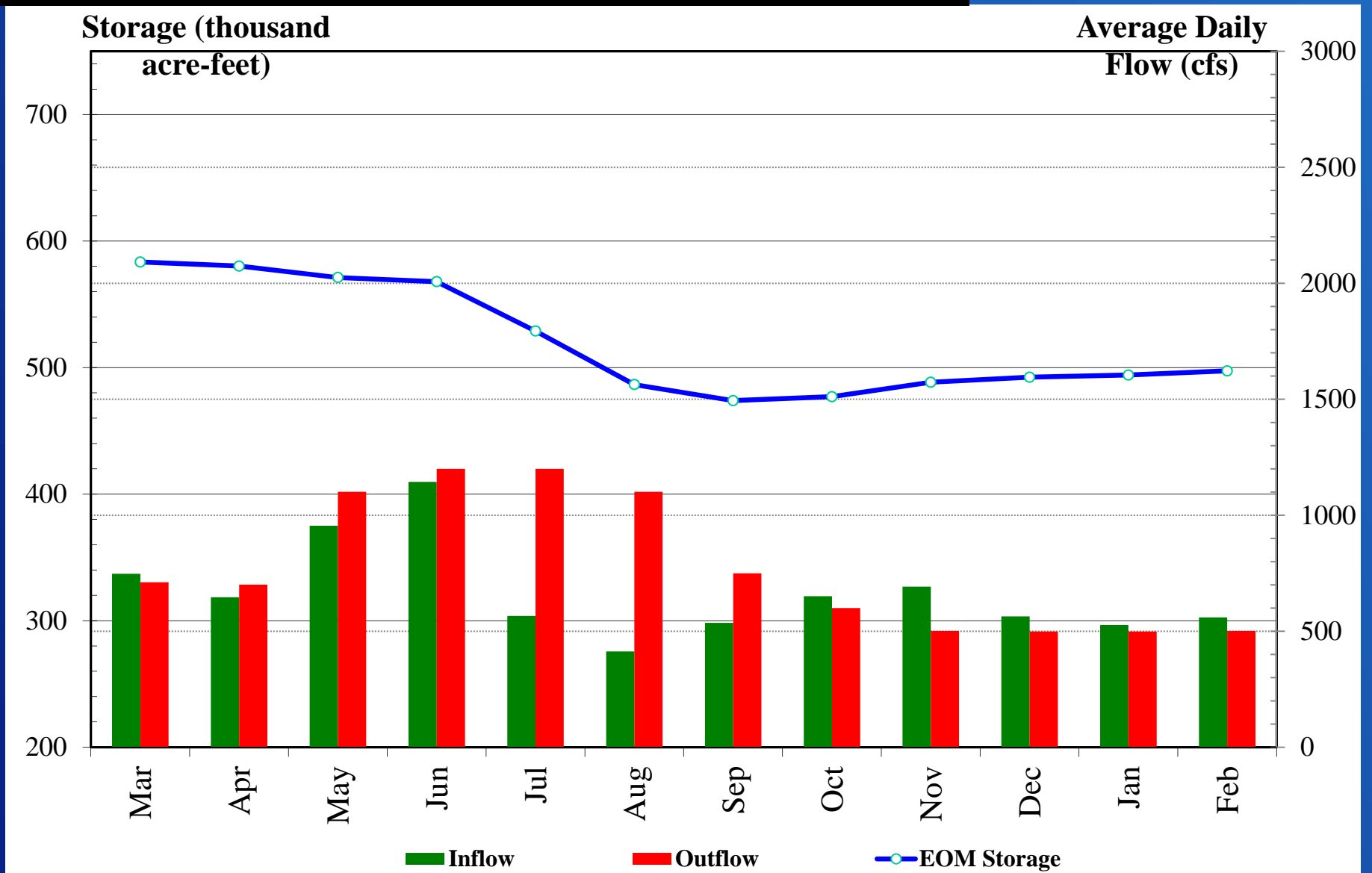
RECLAMATION

# Boysen Reservoir March 1, 2016 Expected Plan Projections



RECLAMATION

# Boysen Reservoir March 1, 2016 Minimum Plan Projections



RECLAMATION

# Boysen Reservoir Storage

**Top of Conservation 741,600 acre-feet**

4725.0 ft

**Expected EOM Sep 2016 674,700 acre-feet**

4721.5 ft

**EOM Sep 2015 631,100 acre-feet (109% of ave)**

4719.0 ft

**30 yr Avg EOM Sep 578,700 acre-feet**

4713.7 ft

**Minimum Expected EOM Sep 2016 473,900 acre-feet**

4708.6 ft

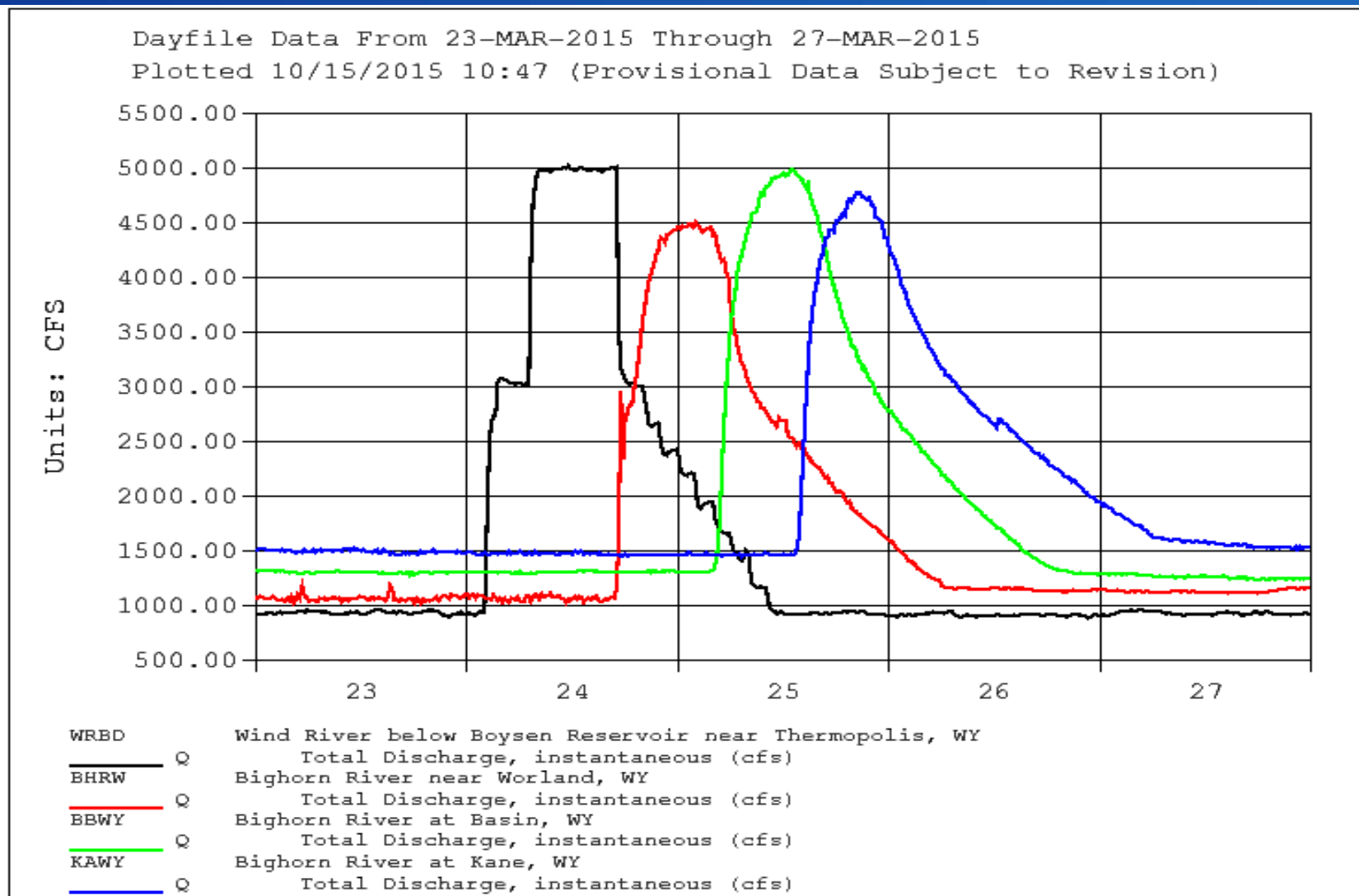
## 2016 Estimated Annual Inflow

- **Minimum 500,700 acre-feet\***
- **Probable 725,200 acre-feet\***
- **30 Year Average 908,900 acre-feet**

*\*Includes Actual Oct-Feb Inflows*

# RECLAMATION

# March 2015 Flushing Flow Below Boysen



# RECLAMATION

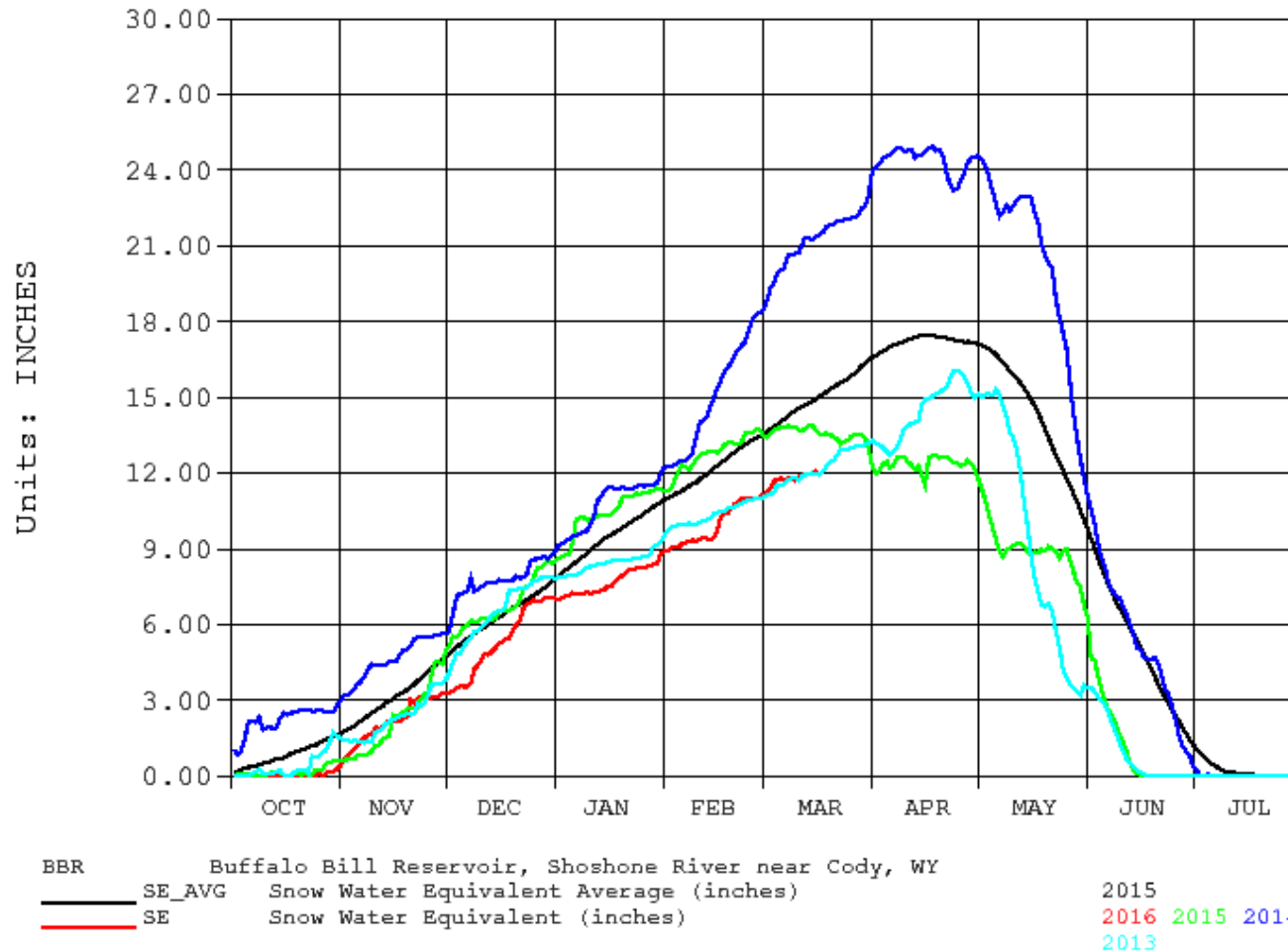
# Buffalo Bill Dam



RECLAMATION

# Current Snow Report – Basin Above Buffalo Bill Reservoir

Archive Data From 1-OCT Through 31-JUL  
 Plotted 03/14/2016 09:59 (Provisional Data Subject to Revision)



Water Year	April-July Inflow (acre-feet)
2013	576,500
2014	1,062,400
2015	696,400
2016	Forecasted 600,000 (87% of avg)
Average = 686,300 1986-2015	

# RECLAMATION

# Buffalo Bill Reservoir March 1<sup>st</sup> Runoff Forecast

(1000 acre-feet)

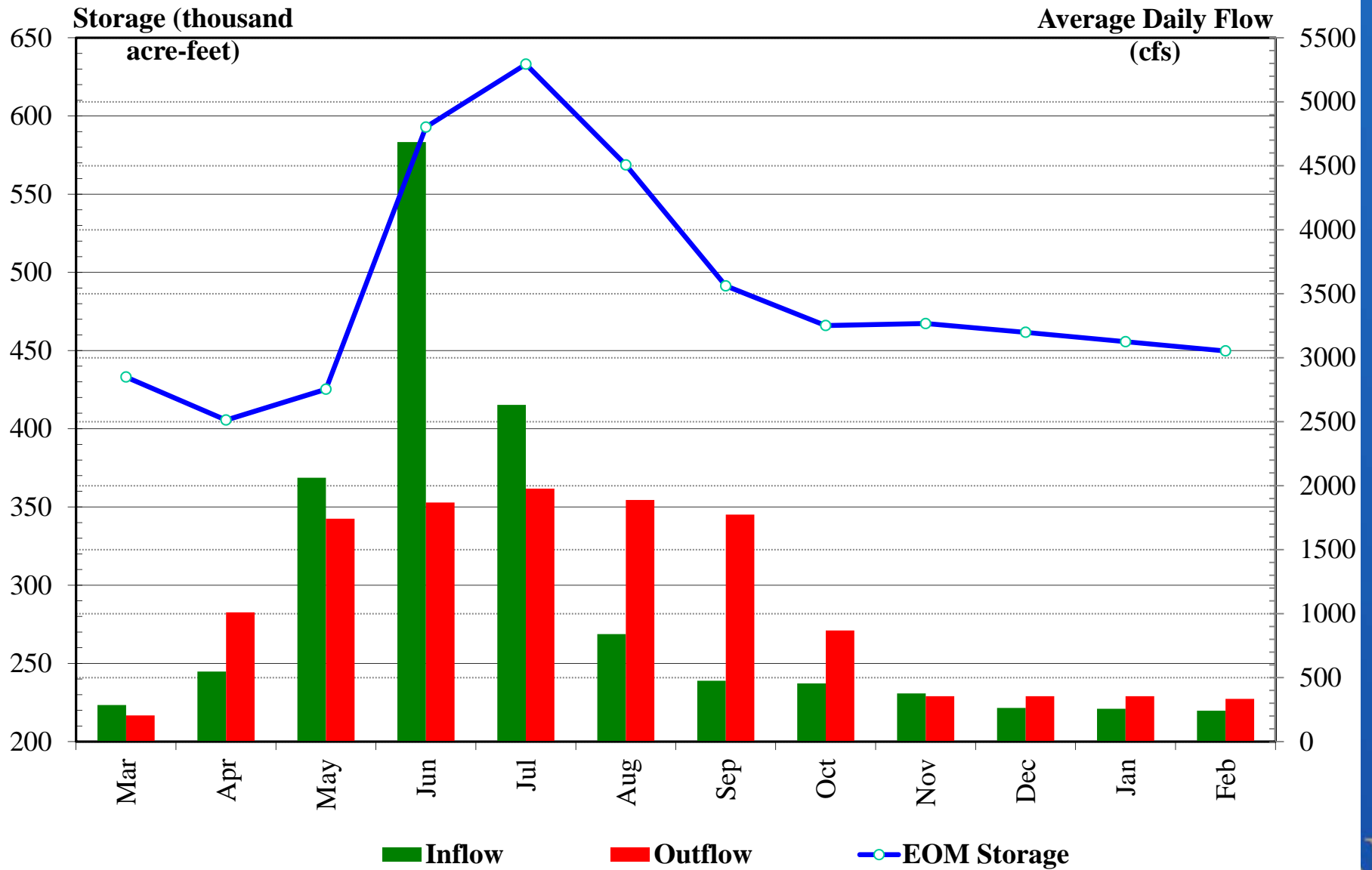
Forecast Points	March 1, 2016 Forecast of April-July Runoff			30 Yr. April-July Runoff Avg. <sup>2</sup>	Expected % of Avg.	Comparative Actual April - July Runoff			
	Reasonable Minimum <sup>1</sup>	Expected	Reasonable Maximum <sup>1</sup>			W. Yr. 2015	W. Yr. 2014	W. Yr. 2013	W. Yr. 2012
	Buffalo Bill Reservoir	450	600			800	686	87	696

<sup>1</sup> The probability is estimated to be 9 chances in 10 that the actual volume will fall between the reasonable minimum and reasonable maximum.

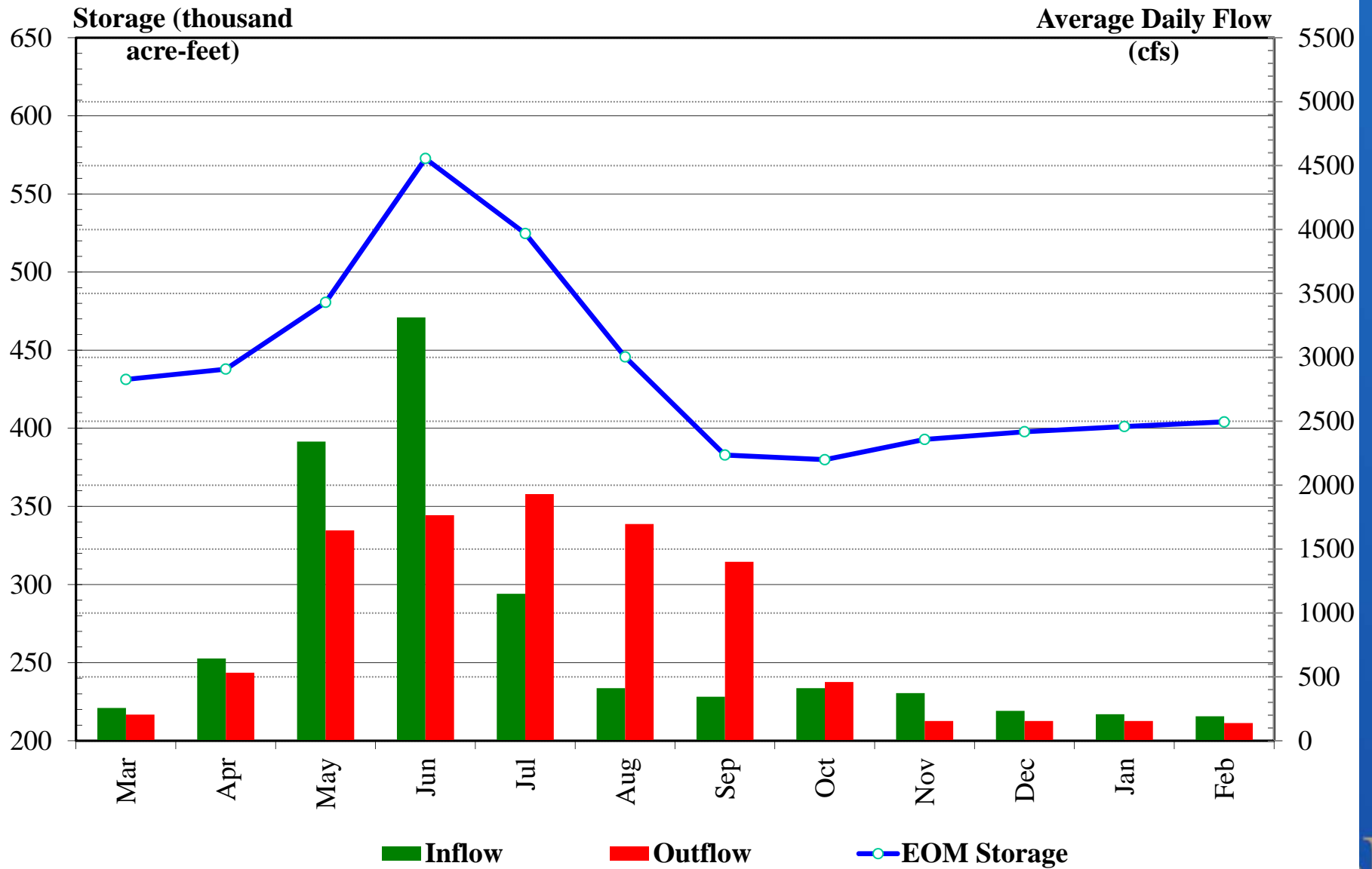
<sup>2</sup> Average is based on the 1986-2015 period.



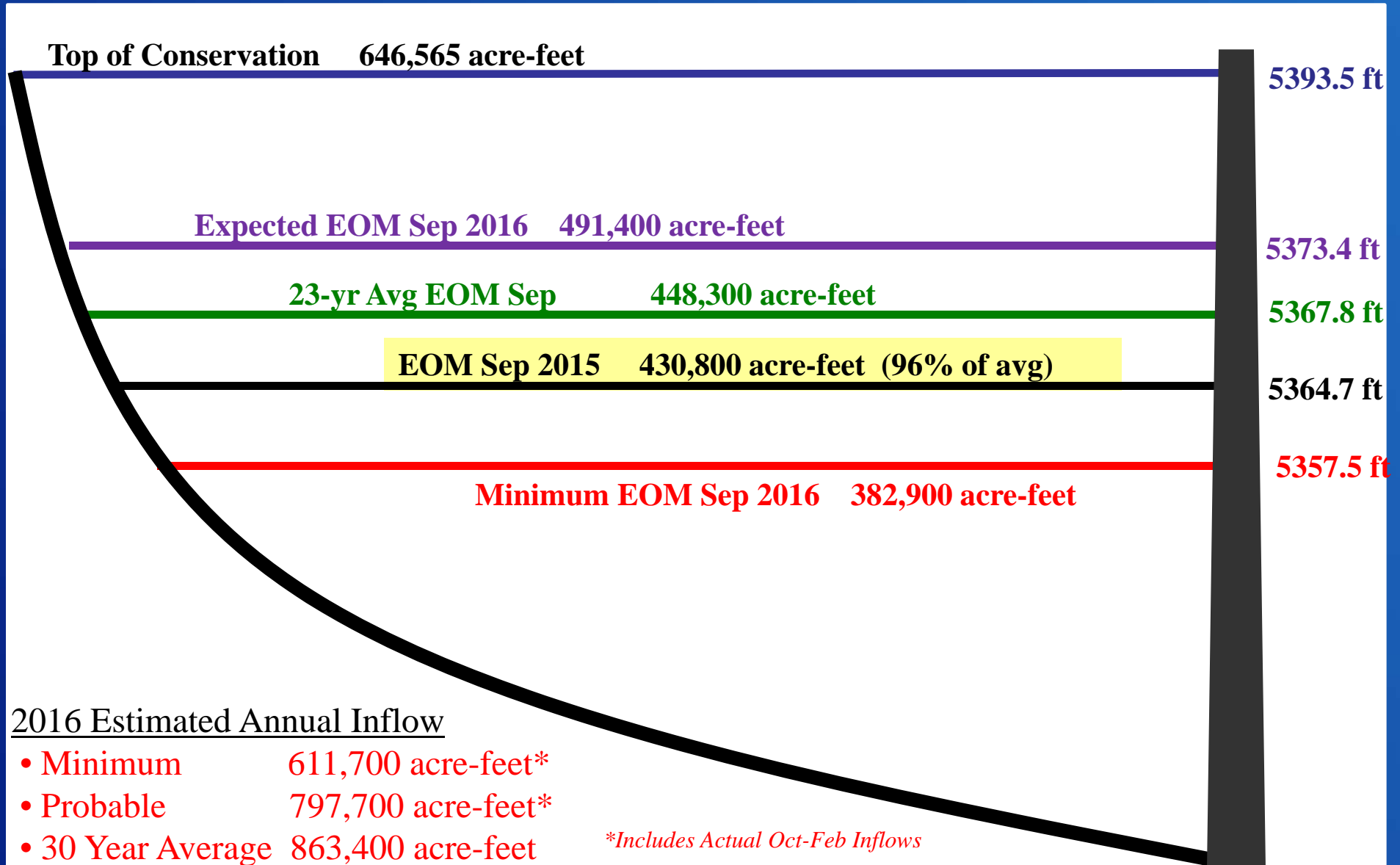
# Buffalo Bill Reservoir March 1, 2016 Expected Plan Projections



# Buffalo Bill Reservoir March 1, 2016 Minimum Plan Projections



# Buffalo Bill Reservoir Storage



## 2016 Estimated Annual Inflow

- Minimum 611,700 acre-feet\*
- Probable 797,700 acre-feet\*
- 30 Year Average 863,400 acre-feet

*\*Includes Actual Oct-Feb Inflows*

# RECLAMATION

# Questions ?



Boysen Dam and Powerplant

# RECLAMATION