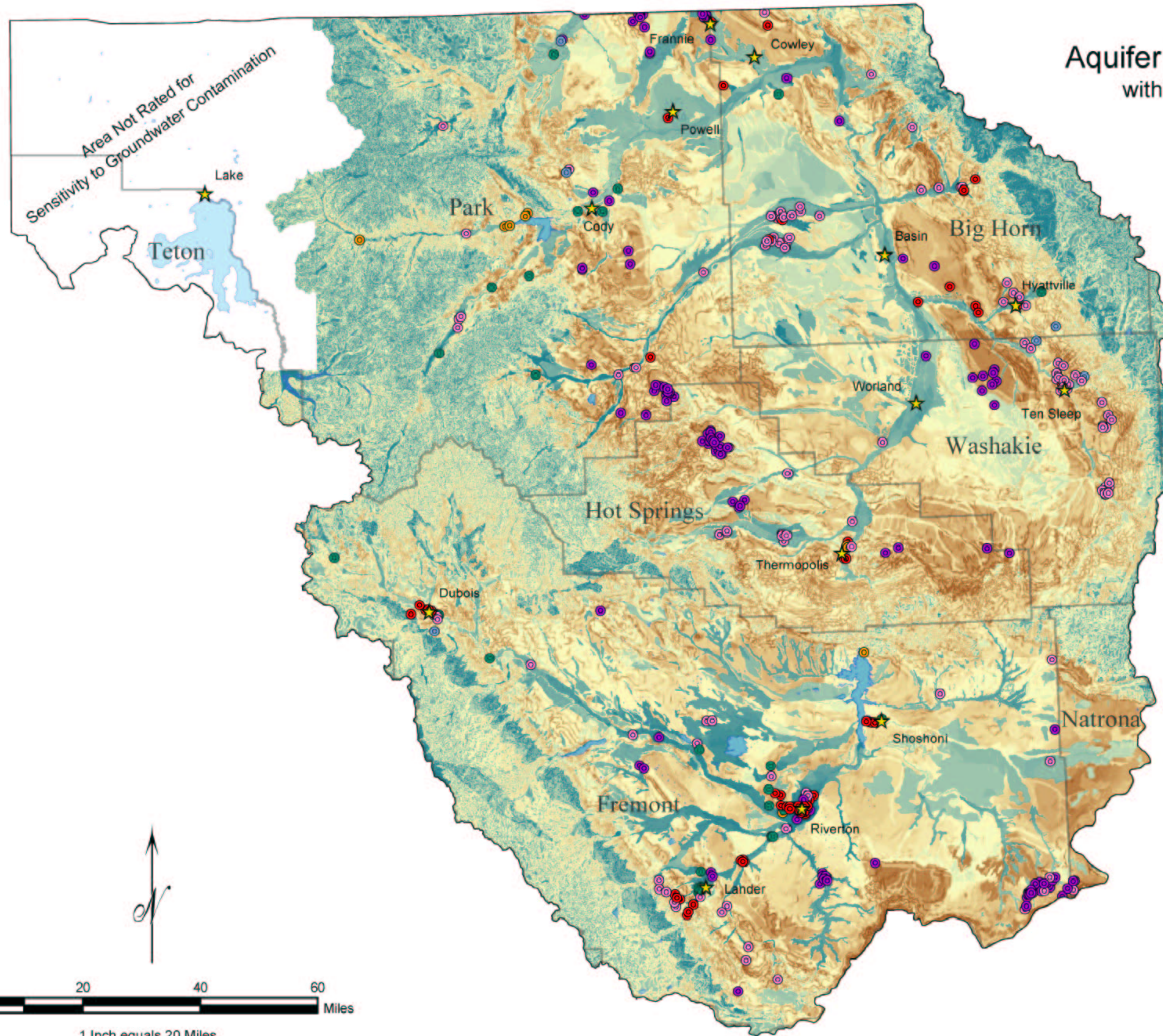




Aquifer Sensitivity and Vulnerability Maps

Appendix D

Aquifer Sensitivity to Surface Contamination with Active Permitted Wells with Production Rates of 50 GPM or Greater

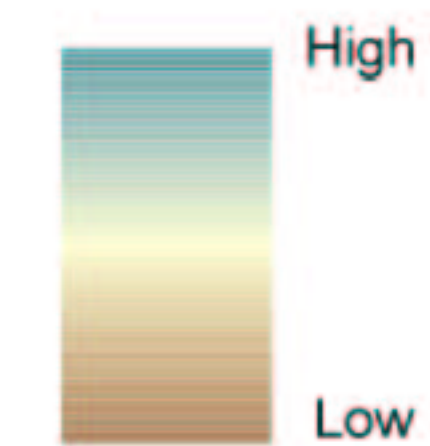


Explanation

Wells

- Domestic Wells
- Agricultural Wells
- Municipal Wells
- Industrial Wells
- Recreational Wells
- Environmental Wells

Rating of Aquifer Sensitivity to Surface Contamination



Data Source:
Hamerlinck and Ameson, 1998



1 Inch equals 20 Miles

MAP PROJECTION:
UTM Zone 13, North American Datum 27

BRS ENGINEERING
BRS Engineering
1225 Market Street
Riverton, Wyoming 82501
(307) 857-3079



2000 Stonehenge Way, Ste. 100
El Cajon, CA 92021

1011 Somerset Ave.
Riverton, WY 82501

920 Sheridan Street
Laramie, Wyoming
307-745-7474


Aquifer Vulnerability to Pesticides with Active Permitted Wells with Production Rates of 50 GPM or Greater

Explanation

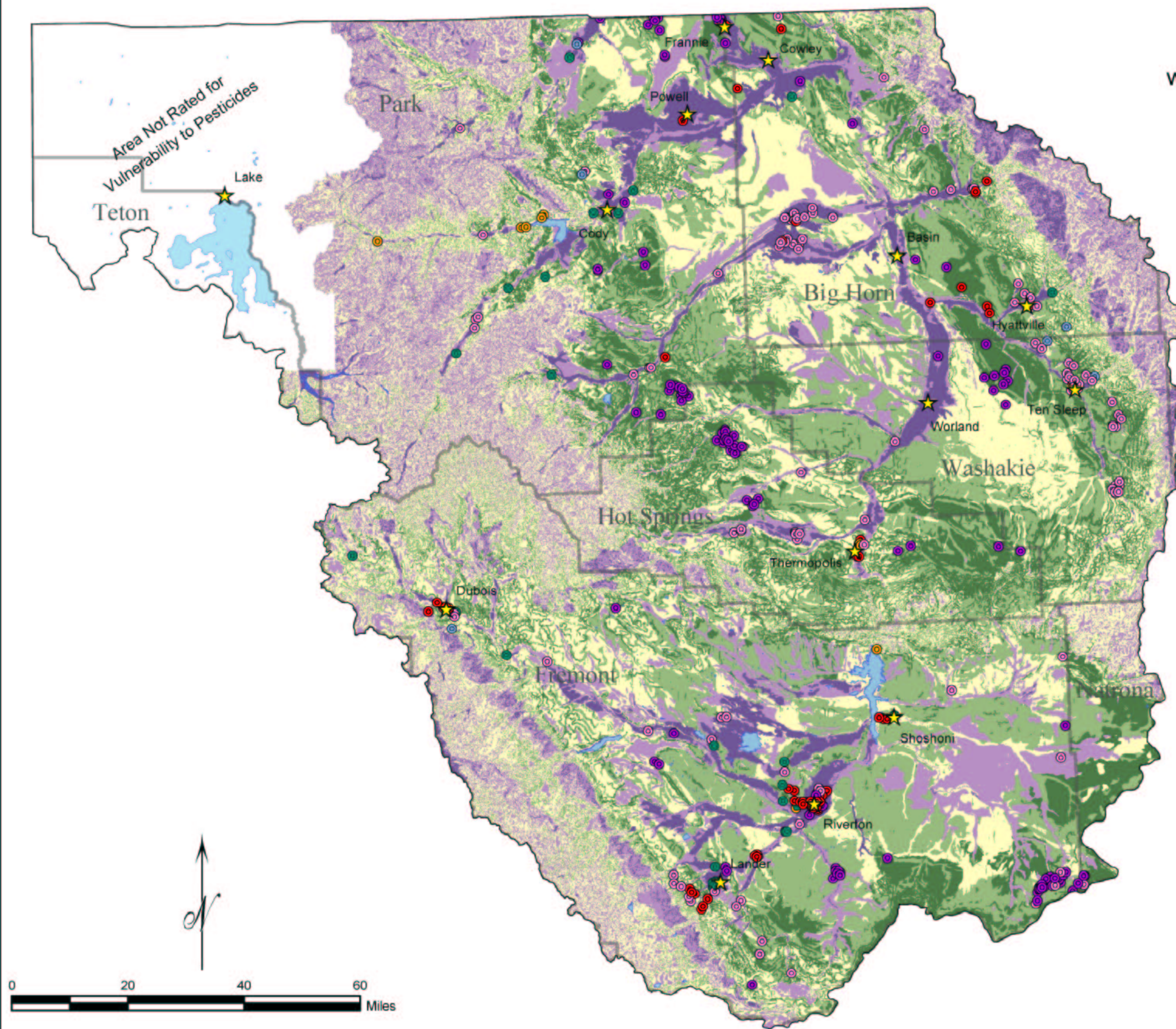
Wells

-  Domestic Wells
-  Agricultural Wells
-  Municipal Wells
-  Industrial Wells
-  Recreational Wells
-  Environmental Wells

Rating of Vulnerability to Pesticides

-  Low
-  Low-Medium
-  Medium
-  High-Medium
-  High

Data Source:
Hamerlinck and Ameson, 1998



MAP PROJECTION:
UTM Zone 13, North American Datum 27

BRS ENGINEERING
BRS Engineering
1225 Market Street
Riverton, Wyoming 82501
(307) 857-3079

Libstone and Associates, Inc.
Engineering, Consulting & Construction
2000 Lawrence Way, Ste. 1
A, Cheyenne, WY 82001

TRIHYDRO
CORPORATION
920 Sheridan Street
Laramie, Wyoming
307-745-7474