

# SUBLETTE CREEK RESERVOIR



GEOTECHNICAL AND  
WATER RESOURCES ENGINEERING



## PRELIMINARY DESIGN REPORT

### SUBLETTE CREEK RESERVOIR MAU/COVEY CANAL REHABILITATION LEVEL II PROJECT LINCOLN COUNTY, WYOMING

Submitted to

#### Wyoming Water Development Commission

6920 Yellowtail Road  
Cheyenne, Wyoming 82002

Cokeville Development Company

Submitted by

#### RJH Consultants, Inc.

9800 Mt. Pyramid Court, Suite 330  
Englewood, Colorado 80112  
303-225-4611

[www.rjh-consultants.com](http://www.rjh-consultants.com)

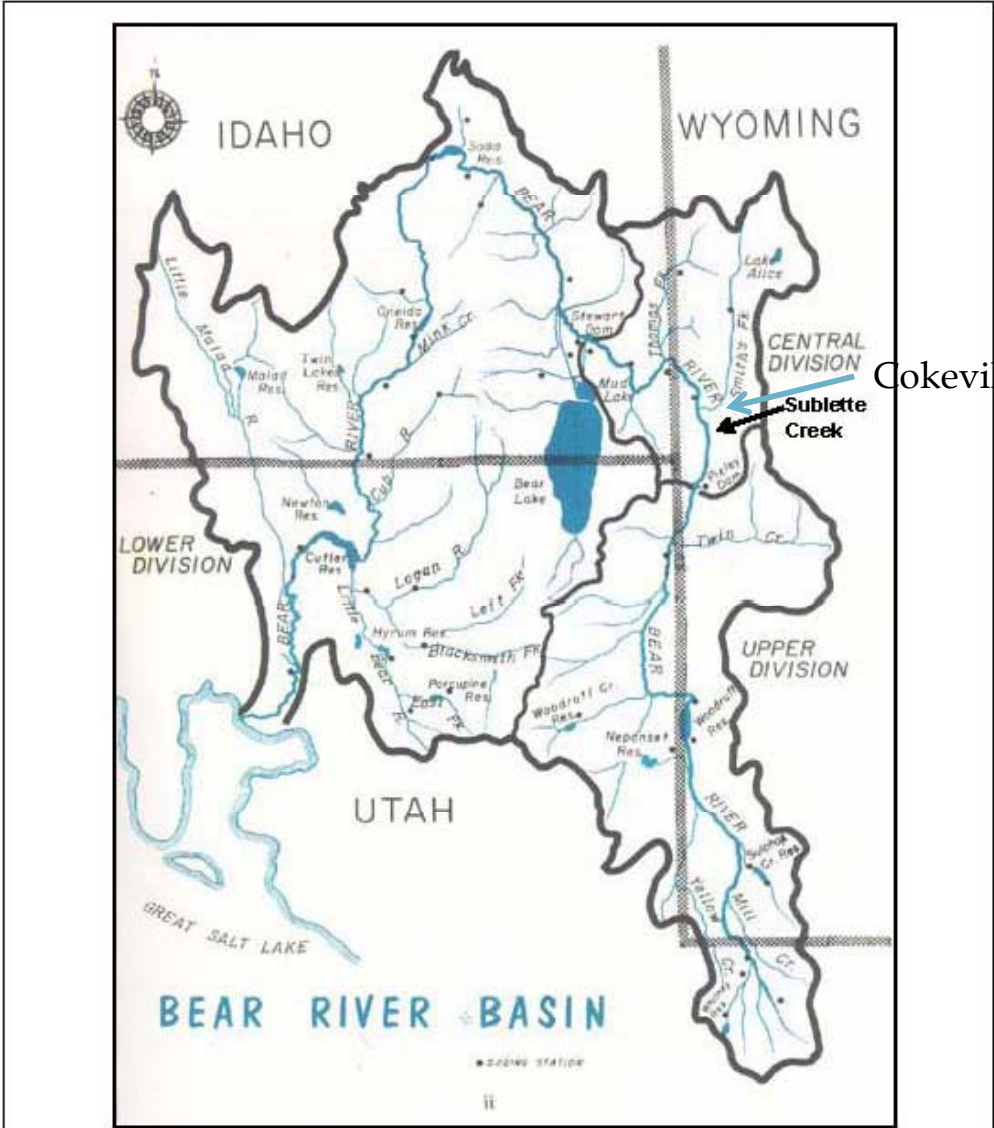
in association with  
Sunrise Engineering, Inc.  
States West Water Resources Corporation  
Western Ecosystems Technology  
Watts and Associates  
Wyoming State Archeologists

November 2010  
Project 09114

Contract Amt. \$361,000

12/31/12

# Sublette Creek Reservoir

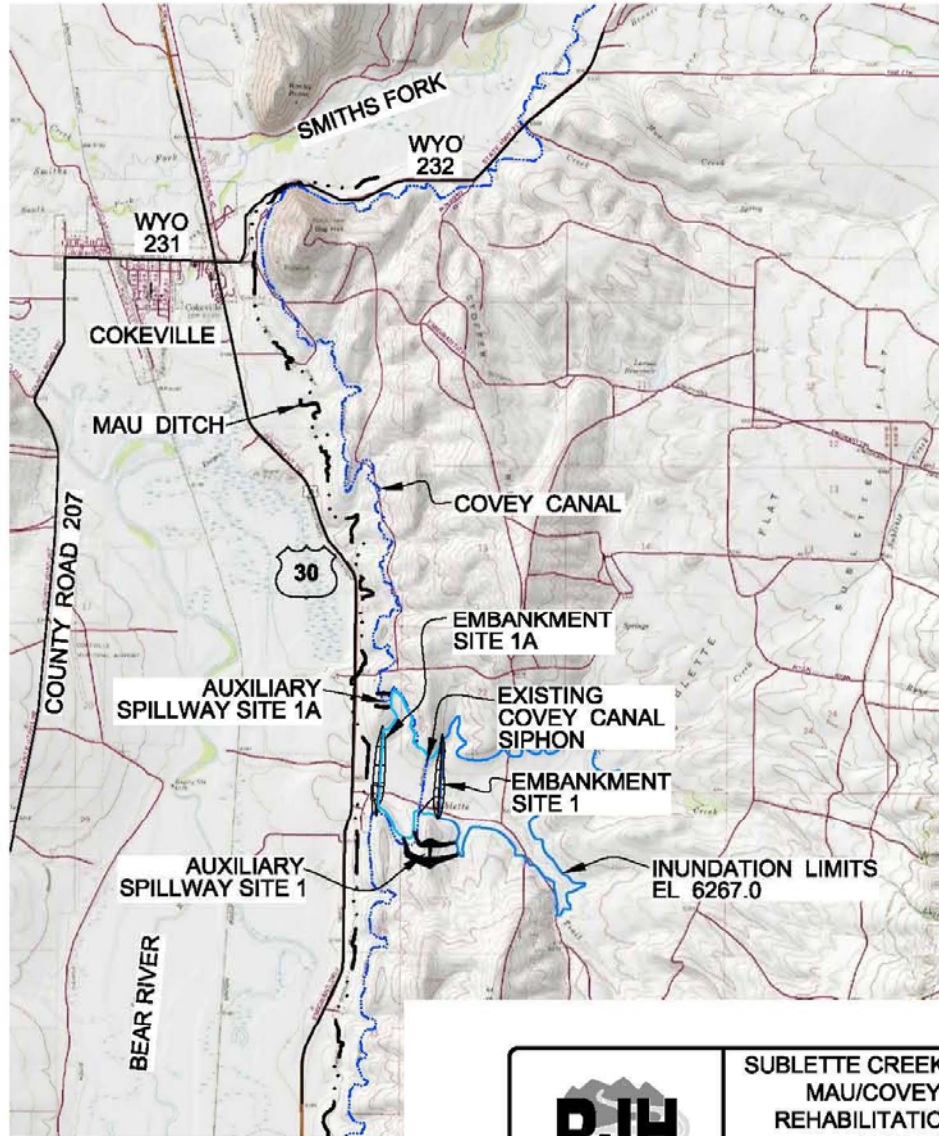


Cokeville

Sublette Creek


# Sublette Creek Reservoir

P:\09114 - SUBLETTE CREEK\CAD\TASK 16-DRAFT, FINAL, AND EXECUTIVE SUMMARY REPORTS\16.3 DESIGN REPORT\16.3.1 DRAFT\09114 LOCALITY MAP.DWG 11/15/2010

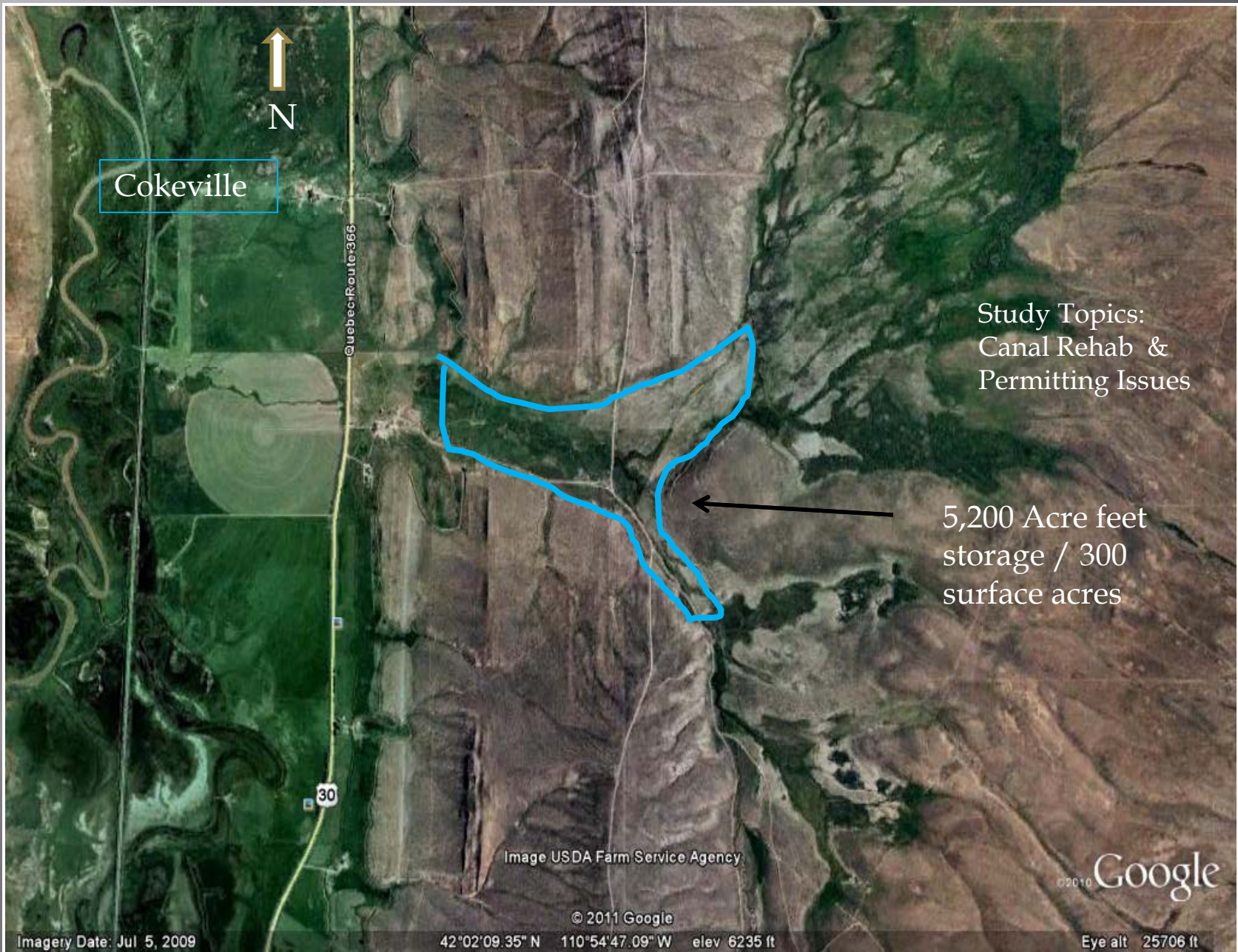


NOTE:

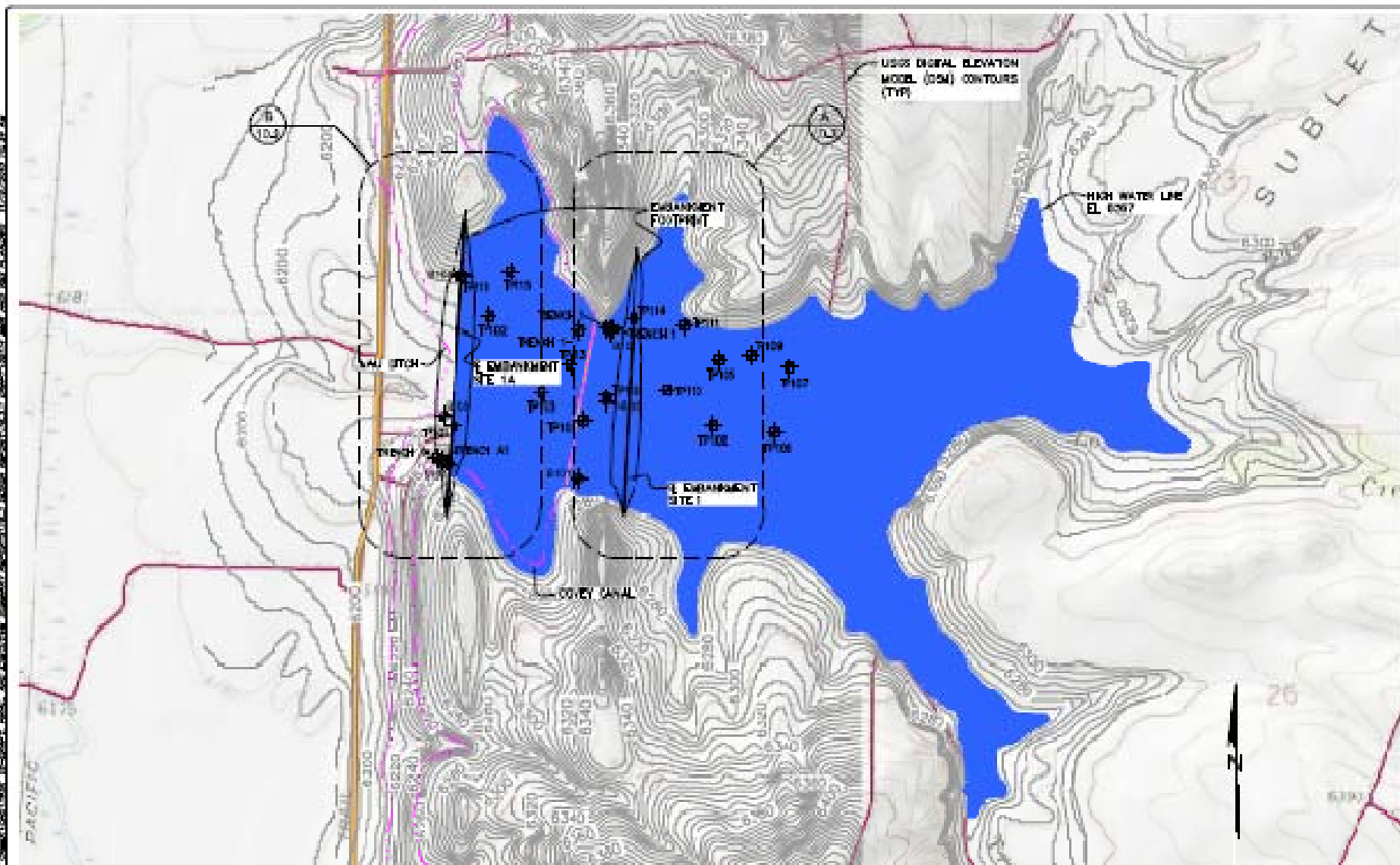
1. BASE MAP IS FROM USGS TOPOGRAPHY

	SUBLETTE CREEK RESERVOIR MAU/COVEY CANAL REHABILITATION LEVEL II PROJECT	VICINITY MAP	
	PROJECT NO. 09114	November 2010	Figure 1.1

# Sublette Creek Reservoir



# Sublette Creek Reservoir



**NOTE**

1. BASE TOPOGRAPHY FROM USGS TOPOGRAPHIC QUADRANGLE MAPS AND DIGITAL ELEVATION MODELS.



WYOMING WATER DEVELOPMENT COMMISSION



SUBLETTE CREEK  
PROJECT NO. 09111

EMBANKMENT AND RESERVOIR PLAN  
November 2010

# Sublette Creek Reservoir

▣ Base construction cost (BCC)	10,729,445.00
▣ Mob/demob (5% of BCC)	536,472.25
▣ Bonds/insurance (4% of BCC)	429,177.80
▣ Direct construction cost (DCC)	11,695,095.05
▣ Construction contingencies (20% of DCC)	2,339,019.01
▣ Final Design (8% of DCC)	935,607.60
▣ Owner administration (5% of DCC)	584,754.75
▣ Construction engineering (8% of DCC)	935,607.60
▣ Legal Fees (5% of DCC)	584,754.75
▣ Permitting and wetland mitigation (17% of DCC)	1,988,166.15
▣ <b>Opinion of probable construction cost</b>	<b>19,063,004.92</b>

# SUBLETTE CREEK RESERVOIR

QUESTIONS & ANSWERS - (maybe)