

What to expect....

Water quality slant

Mostly water quality implementation with
some coordination and planning

What role does the BLRC maintain for the future

Bear Lake Regional Commission



- Planning and Zoning
- Thomas Fork Project
- Multi-State Water Quality Coordination

Planning & Zoning

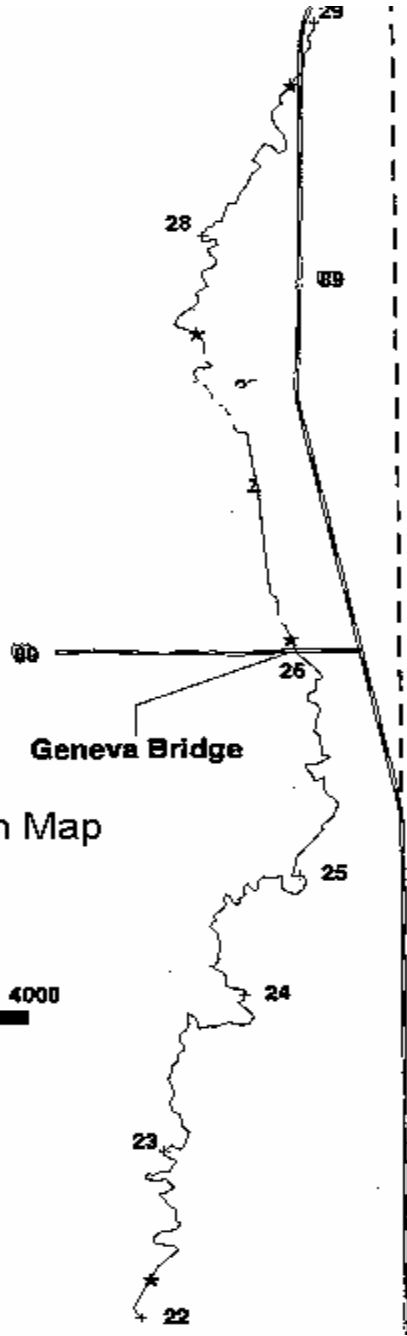
- Adoption of new Land Use Ordinances
 - Performance std's.
 - Strict beach development requirements
 - Scenic Highway Overlay Zone

Thomas Fork Project

- Assistance from NPS 319 funds (60/40 match)
- BMP's applied to over 10,000 linear feet
- Over 350,000 Ft³ of soil retained in place



Idaho



Wyoming

General Location Map

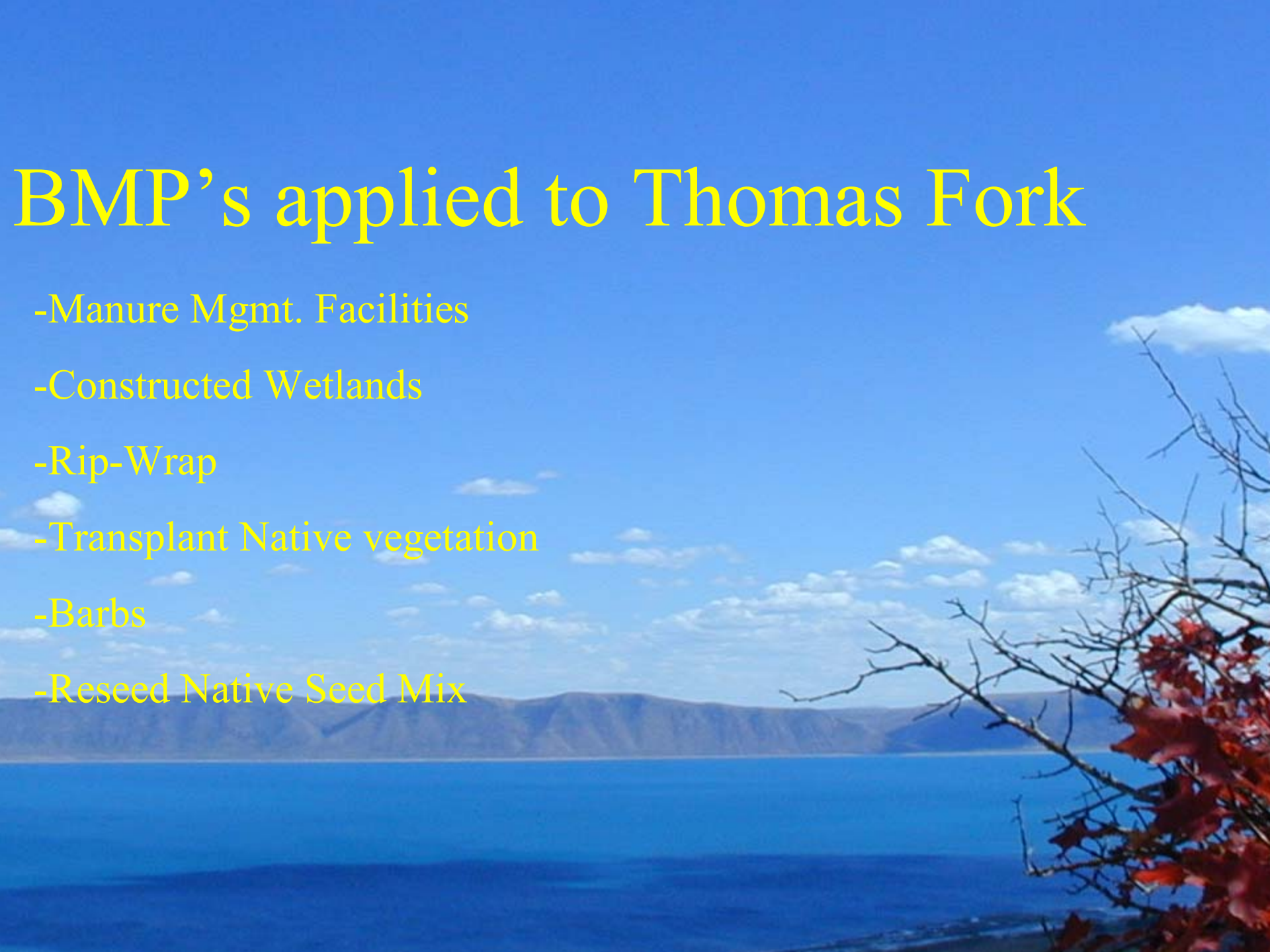
Figure 1



23 - River Miles

BMP's applied to Thomas Fork

- Manure Mgmt. Facilities
- Constructed Wetlands
- Rip-Wrap
- Transplant Native vegetation
- Barbs
- Reseed Native Seed Mix

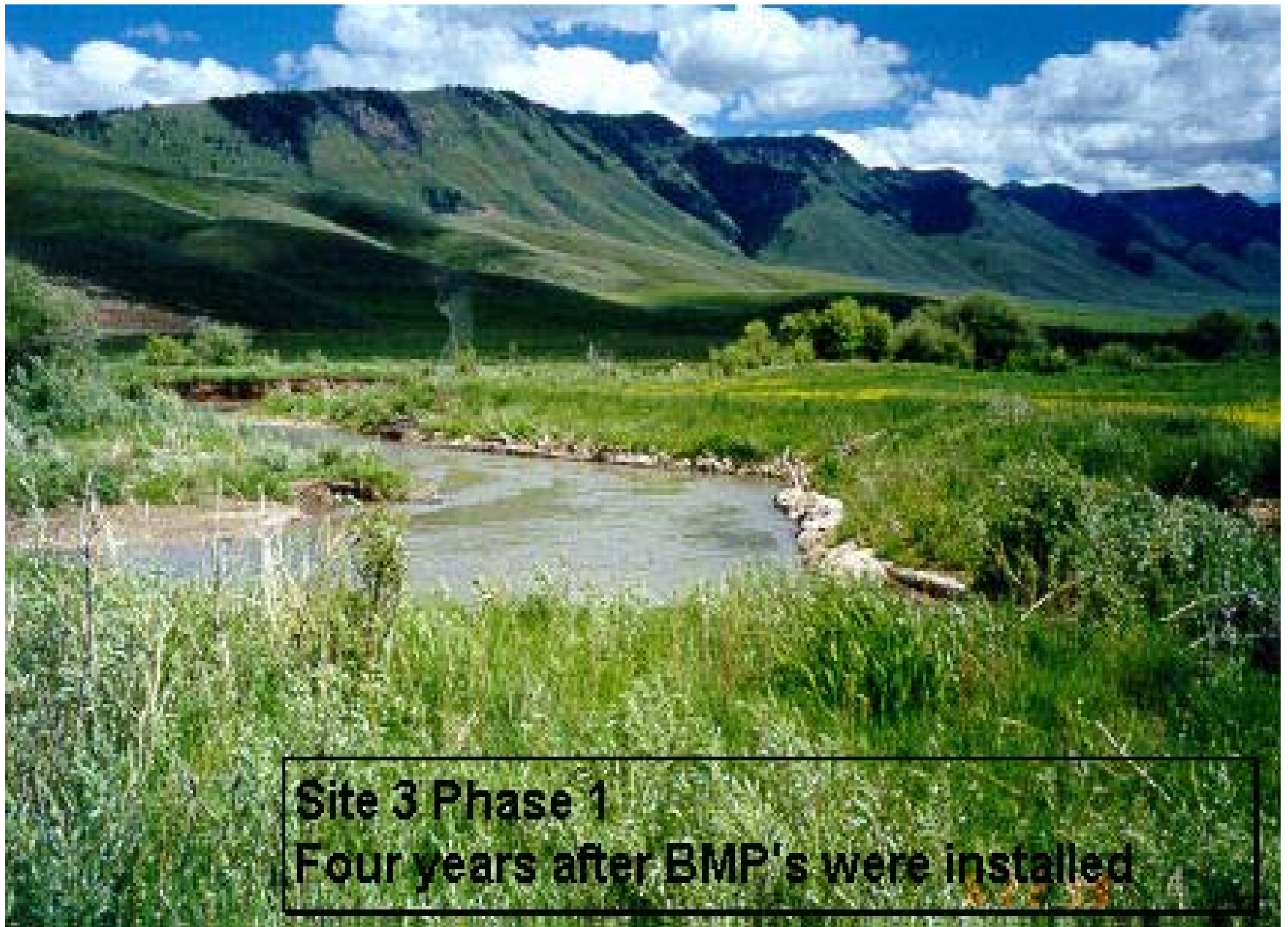


Manure Mgt. Facility



Robert and Rodney Boehme- Landowners





**Site 3 Phase 1
Four years after BMP's were installed**

Garth Boehme-Landowner





Before



After



Physical



Biological





Before



After



Fall 2002



Spring 2003



Bear River Water Quality Task Force

“Measurably improve the overall water quality and stream integrity of Bear River and its’ tributaries, including lakes and reservoirs, to support beneficial uses and development.”

-Multi-State, Interagency Coordination

-Special Interest Groups

-Members of the public interested in the water quality of the Bear River

Bear River Water Quality Task Force (cont.)

7 smaller meetings planned for the future that address more local water quality issues around Utah, Idaho and Wyoming

Quarterly meetings to address water quality issues

Website development

Collaborative effort with the INEEL to develop model for water quality management and quantity

Future Projects....

Continuation of Thomas Fork Efforts

Big Spring Creek

Roadside information display

Thomas Fork Efforts

- Expected start fall 2003
- Strong emphasis on fencing out livestock
- Straddles border of Idaho and Wyoming
- Continuation of current BMP's applied to other segments of Thomas Fork



Big Spring Creek

- South end of Bear Lake
- Collaboration between several state agencies and landowner
- Will address strong nutrient loading and sediment problem
- Relocation of stream and design to restore historical Bonneville Cutthroat Trout habitat



Roadside Information Display

Strong push by Idaho to elevate the public understanding of land use practices and Idaho's role in the TMDL process

Collaborative effort between the BLRC and Idaho Transportation Dept. and local landowners

Opportunity to inform and educate public to the improvements of water quality using cost-sharing programs