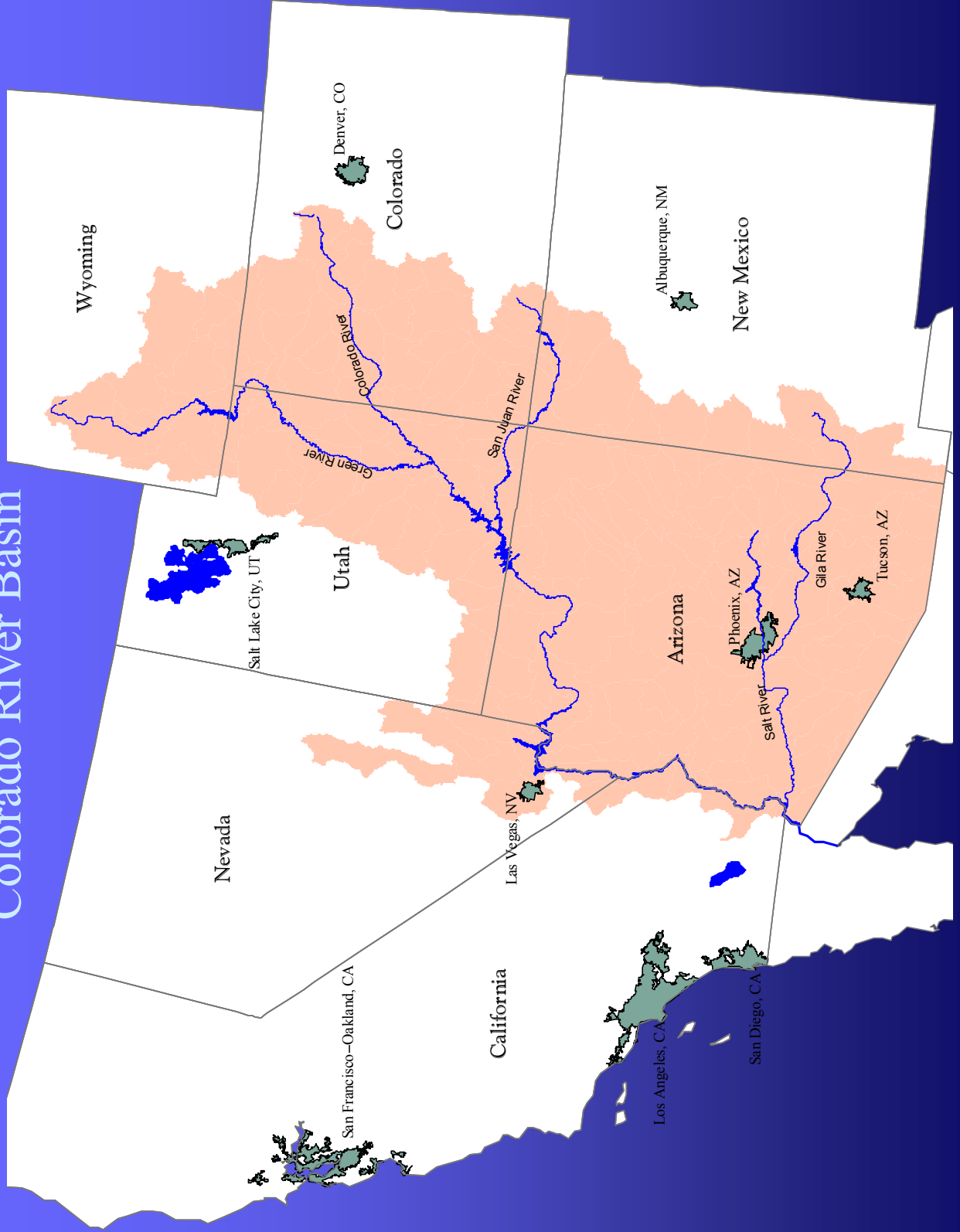


# Colorado River Basin



## Salinity Control Program

- Basin wide Salinity Standards
- Plan of Implementation

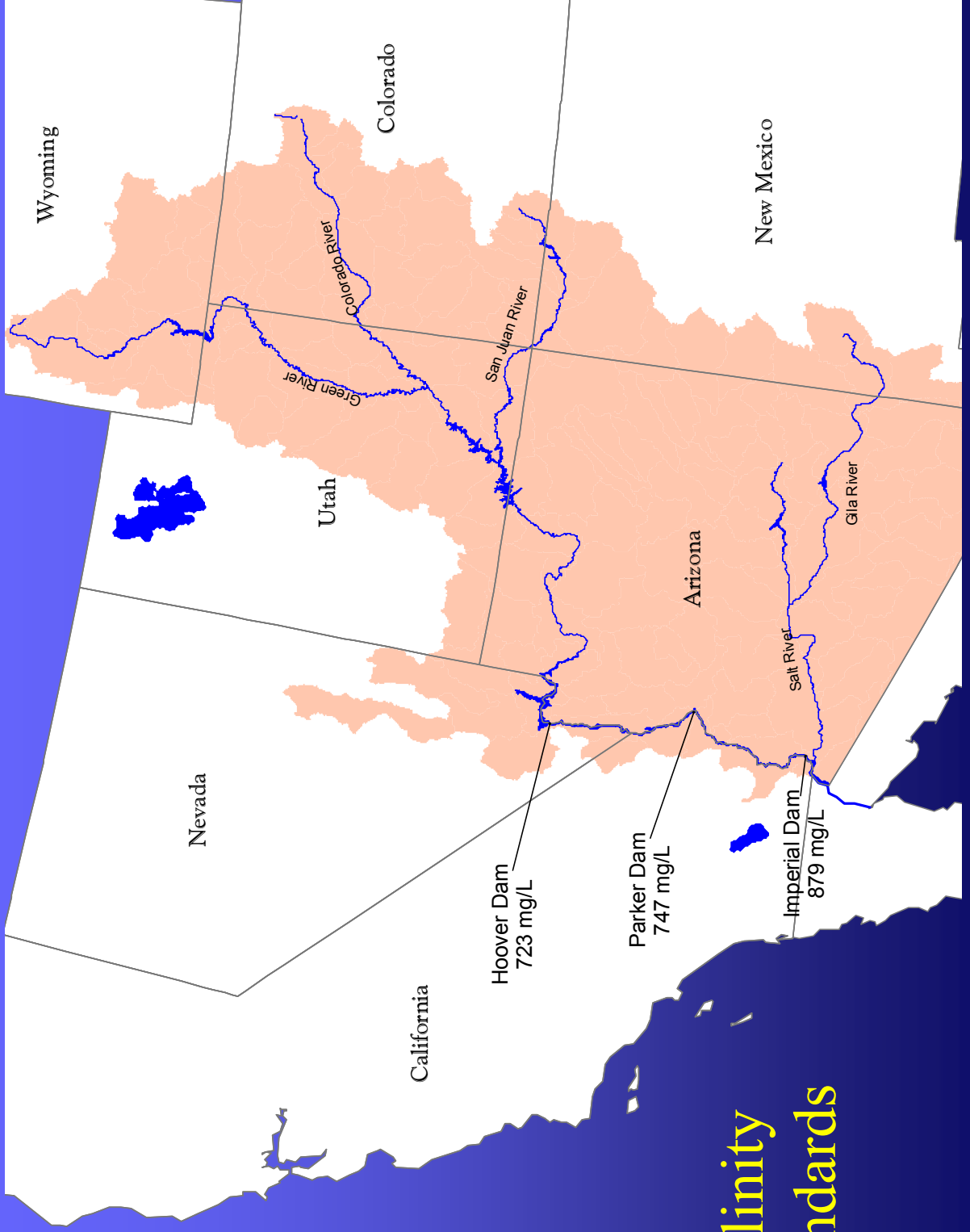
# Salinity Standards

- Recommended by the Salinity Forum
- Adopted individually by the States
- Approved by EPA
- Reviewed & revised where appropriate every 3 years (Triennial Review)

# Numeric Standards

- Established by the Salinity Forum in 1974 at three locations in the Lower Basin.
  - 723 mg/L Below Hoover Dam
  - 747 mg/L Below Parker Dam
  - 879 mg/L At Imperial Dam
- Concentrations reflect 1972 Salinity Levels

# Colorado River Basin



## Salinity Standards

# Plan of Implementation

- Salinity control project areas (*nonpoint source salinity control*)
- NPDES Permitting Policies (*point source salinity control*)

# Implementation Policies

- **General NPDES Permitting Policy (1977)**
- Use of Brackish water for Industrial Purposes (1980)
- Intercepted Groundwater (1982)
- Fish Hatcheries (1988)

# NPDES Policy (current)

- Goal - no salt return whenever “practicable”
- Different approaches for:
  - Industrial Discharges
  - Municipal Discharges (*wastewater treatment*)



# Waivers

- Industrial Discharges
  - Salt load is less than:
    - 1 ton/day; or
    - 350 tons/year
  - Not practicable to prevent the discharge of all salt. (*Feasibility study required*)
    - Technology (*alternative treatment or disposal options*)
    - Economics (*cost of alternatives*)

# Waivers

- Municipal
  - Increase in salt concentration is less than 400 mg/L;
  - Not practicable to achieve less than a 400 mg/L increase in salinity. (Requires feasibility study)

# Proposed Policy Revisions

- Waiver may be granted if:
  - Salt load is less than 1 ton/day or 366 tons/year\*.

\* *Considered a "de minimus" amount and is the first decision point.*

# Proposed Policy Revisions

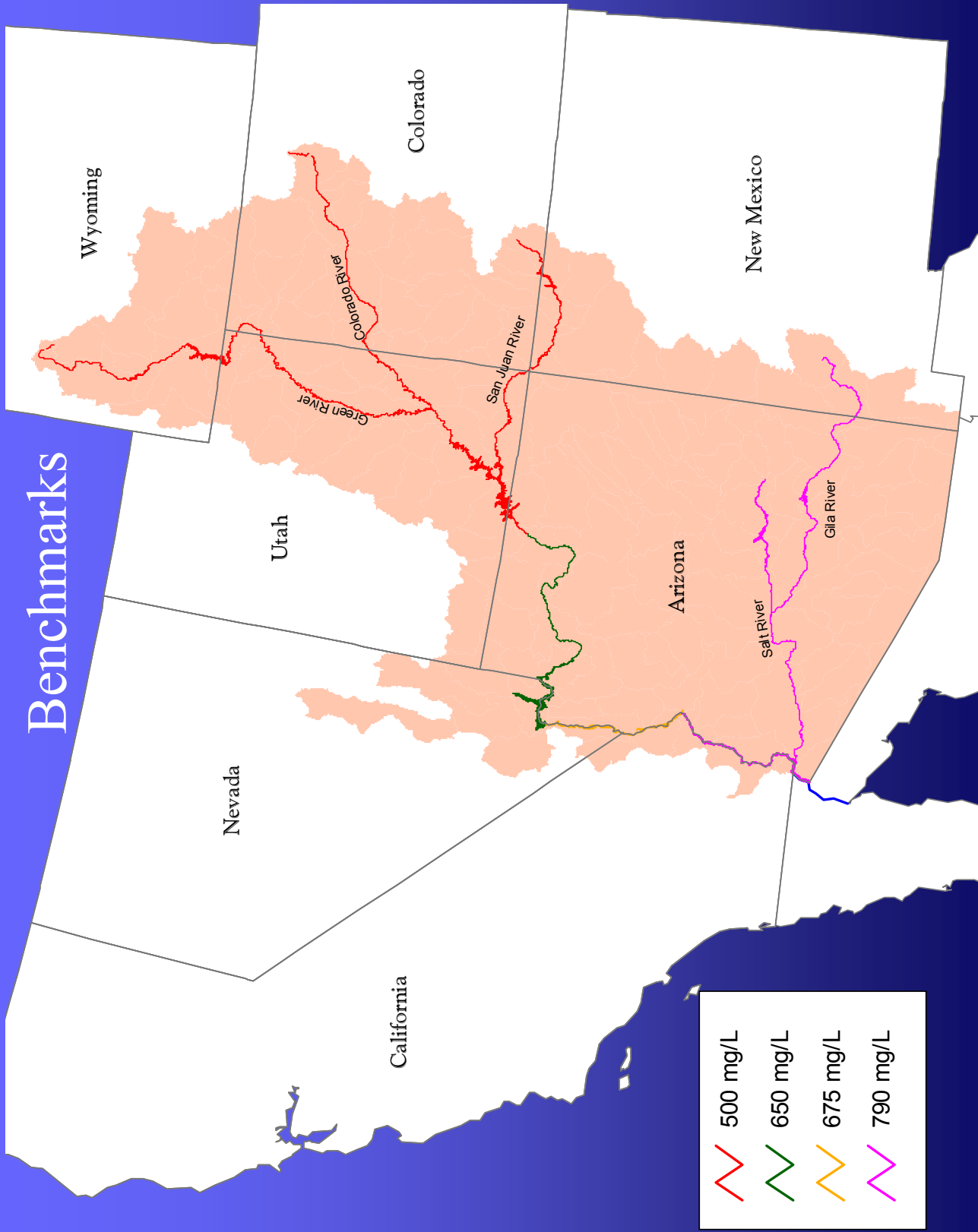
- Waiver may be granted for **"Fresh Water Discharges"\*** regardless of total salt load.
  - *Defined as a concentration that does not cause or contribute to exceedances of the numeric standards*
  - *Benchmark values established for implementation of the freshwater waiver.*

# Proposed Policy Revisions

- Fresh water discharge benchmark values\* and locations:
  - 500 mg/L above Lees Ferry, AZ
  - 650 mg/L below Hoover Dam
  - 675 mg/L below Parker Dam
  - 790 mg/L at Imperial Dam

\* *benchmark values are NOT new standards but are used to set effluent limits on NPDES permits to achieve the standards*

# Fresh Water Benchmarks



# Proposed Policy Revisions

- Multiple Discharges
  - For purposes of NPDES permit implementation for dischargers with multiple outfalls or multiple permits, the waiver for total salt loading (*1 ton/day - 366 tons/yr*) represents the cumulative salt load from all outfalls.

# Proposed Policy Revisions

- Multiple Discharges (*cont.*)
  - Facilities with multiple discharges are those where:
    - Facilities are integrated or interrelated in any way including the production of a principle product
    - located on contiguous or adjacent property or within a single production (*e.g. coal or oil field, watershed etc.*); and are
    - Owned or operated by the same person or company.



# Proposed Policy Revisions

- Offsets (*salt banking*)
  - New requirement for an applicant to consider the feasibility of offsetting salt loading to the Colorado River as an alternative in an application for a waiver.
  - Allows the NPDES authority to accept offsets in the decision to grant a waiver.

# Proposed Policy Revisions

- Once-through cooling water
  - New provisions allowing a waiver for de minimus increases in salt concentrations in non-contact cooling water.
    - 25 mg/L = de minimus increase in concentration;
    - Discharge must be to the same stream from which the cooling water was diverted.

# Revision Process

- The revised NPDES policy is included as Appendix D in the 2002 Colorado River Basin Salinity Control Forum Triennial Review Report.
- The Forum is currently accepting Public comments on the policy revisions.
- After consideration of comments, the Forum may adopt the revised policies in Sept. 2002.
- Each member state must then adopt the revised policies according to their own administrative procedures.

# Documents / Comments

- The 2002 Triennial Review Report can be obtained from the Wyoming DEQ/WQD or the WY State Engineer's Office in Cheyenne.
- Written comments should be directed to the Salinity Forum main office:

Colorado River Basin Salinity Forum  
106 West 500 South, Suite 101  
Bountiful, Utah 84010