

**Wyoming Water Development  
Commission**

**COKEVILLE  
RESERVOIR  
LEVEL I STUDY  
PROJECT MEETING**

**March 22, 2004**

**Sunrise Engineering, Inc.**

# **PREVIOUS TOPICS OF DISCUSSION:**

- **Reasons For Reservoir**
- **Potential Locations**
- **Site Selection Criteria**
- **Reservoir Model & Results**
- **Potentially Interested Parties**



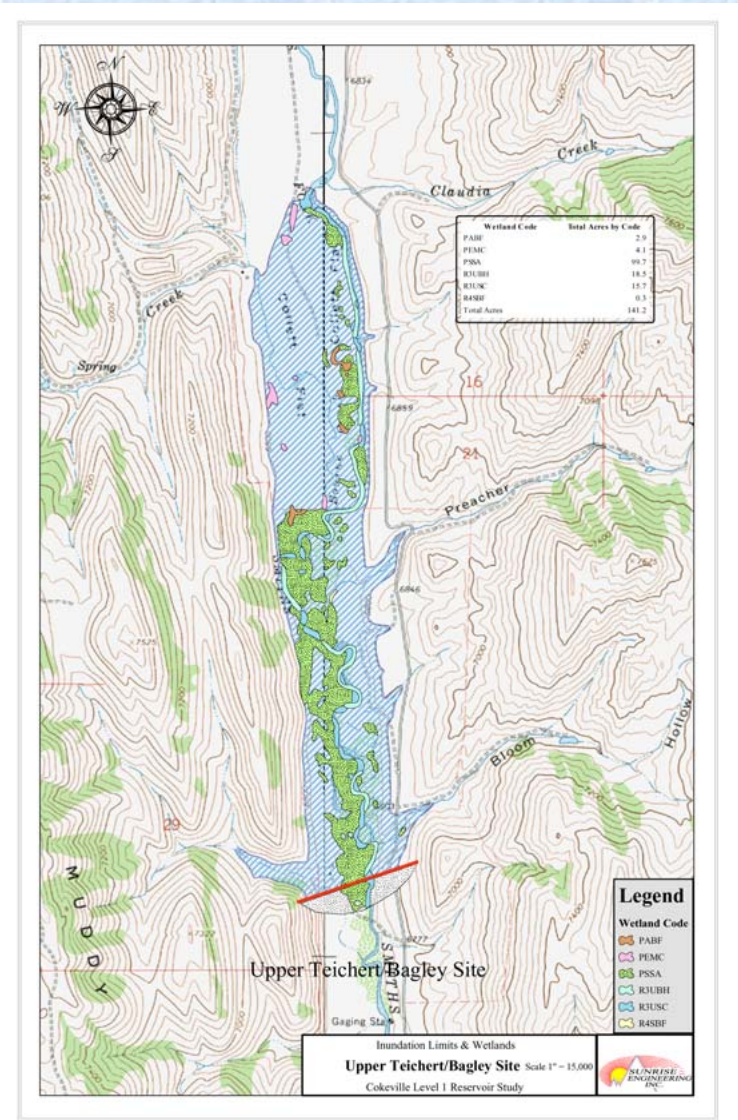
# **TODAY'S TOPICS OF DISCUSSION:**

- **Environmental and Wetlands**
- **Recommended Sites**
- **Conceptual Designs**
- **Estimated Costs**
- **Upcoming Work**



# WETLANDS INVENTORY

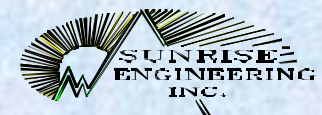
- National Wetlands Inventory Map
- Overlay on Inundation Limits





# RESULTS OF WETLANDS INVENTORY

SITE	RESERVOIR SIZE (ACRE FEET)	WETLAND TYPE											
		PABF	PABGb	PEMB	PEMA	PEMC	PEMF	PSSA	PSSC	R3UBH	R3USC	R4SBF	TOTAL INUNDATED WETLANDS
Lower Teichert/Bagley	14,000	2.9	0	0	0	2.1	1.2	122.7	0	22.3	19.3	0.3	170.8
Upper Teichert/Bagley	14,000	2.9	0	0	0	4.1	0	99.7	0	18.3	15.7	0.3	141
Smiths Fork	17,000	1.9	0.4	0.2	0	1.6	0	94.9	0.1	8.7	17	0	124.8
Ashby	18,000	1.2	0.1	0	0	1.7	0	85.6	0.6	1.2	8.3	0	98.7
Ferney Glade	25,000	0	2.5	0	0.1	1	0	188.4	0.4	2.7	9	0	204.1
Trespass	19,900	0.1	0.4	0	0	0.1	0	94	7.7	2.8	0	0	105.1



# **SITE SELECTION CRITERIA**

- **IRRIGATION RELIABILITY**
- **WETLANDS IMPACTS**
- **INUNDATED ACREAGE**
- **EMBANKMENT VOLUME**
- **CONSTRUCTION COSTS**
- **ACCESS**
- **MITIGATION POSSIBILITIES**
- **RECREATION OPPORTUNITIES**
- **FLOOD CONTROL**
- **MATERIAL SOURCES**



# **SITE SELECTION GENERAL OBSERVATIONS**

- **The Smiths Fork and Ashby Sites Have Very Similar Characteristics**
- **The Upper and Lower Teichert/Bagley Sites Are Very Similar**

# **SITES RECOMMENDED FOR CONCEPTUAL DESIGN**

## **Smiths Fork Site**

- **Smallest Embankment Volume**
- **Relatively Lower Cost**
- **Room For Mitigation of Wetlands**
- **Attractive Recreational Features**
- **Achieves Irrigation Reliability**



# **SITES RECOMMENDED FOR CONCEPTUAL DESIGN**

## **Upper Teichert/ Bagley Site**

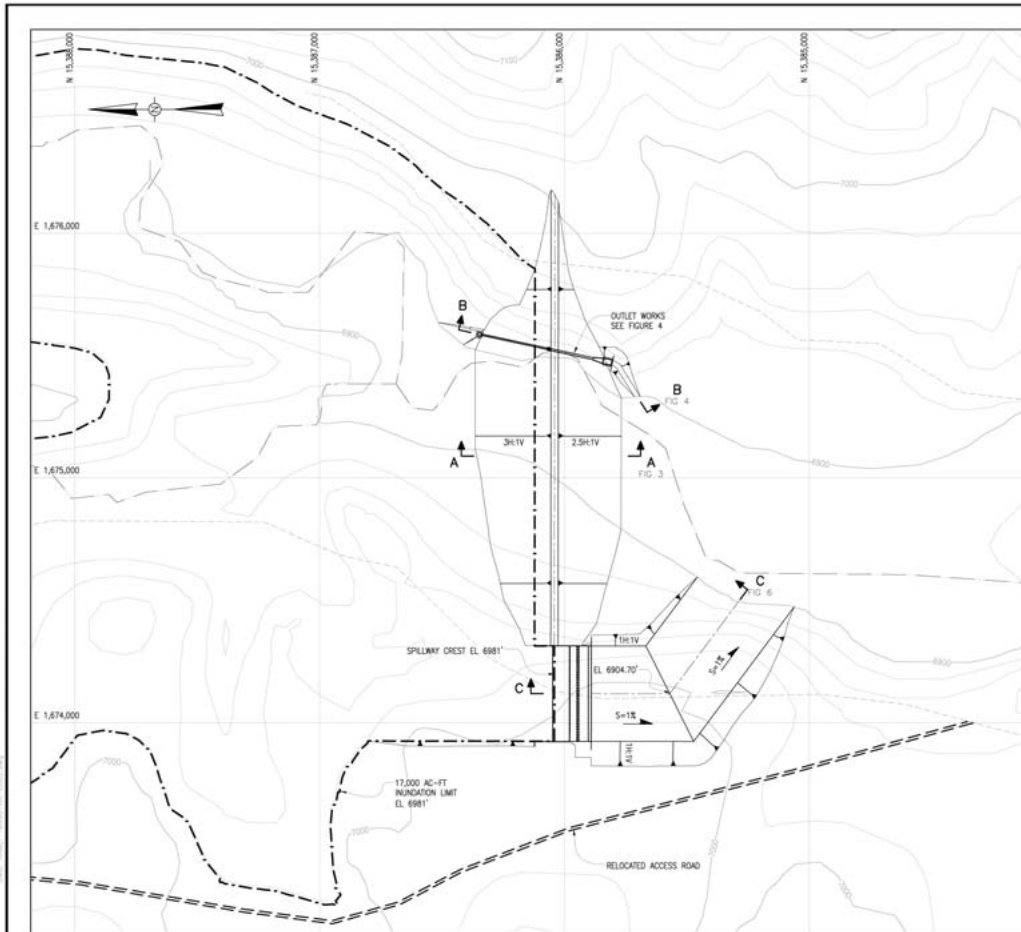
- **Smallest Pool Volume**
- **Between Upper and Lower,  
The Upper Has Least  
Impact To Irrigable Land**
- **Between Upper and Lower,  
The Lower Has Smallest  
Embankment Volume**
- **Low Impact To Public  
Access and Existing Roads**
- **Mitigation Areas Below Site**

# CONCEPTUAL DESIGN CONSIDERATIONS

- MATERIAL SOURCES
- SPILLWAY LAYOUT
- SPILLWAY SIZING
- FOUNDATION  
CONDITIONS
- CREST ELEVATION
- OUTLET WORKS  
LAYOUT
- EROSION  
PROTECTION

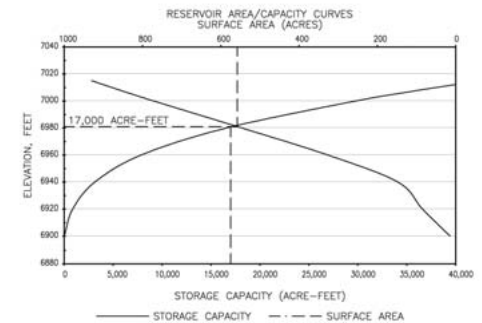


# SMITHS FORK CONCEPTUAL LAYOUT



### LEGEND:

- EXISTING GROUND SURFACE CONTOURS AND EL. FEET
- WATER RESERVOIR INUNDATION LIMIT
- EXISTING ROAD/TRAIL
- EXISTING CREEK/RIVER



200 0 200 400 600  
SCALE  
1"=200' AT FULL SIZE

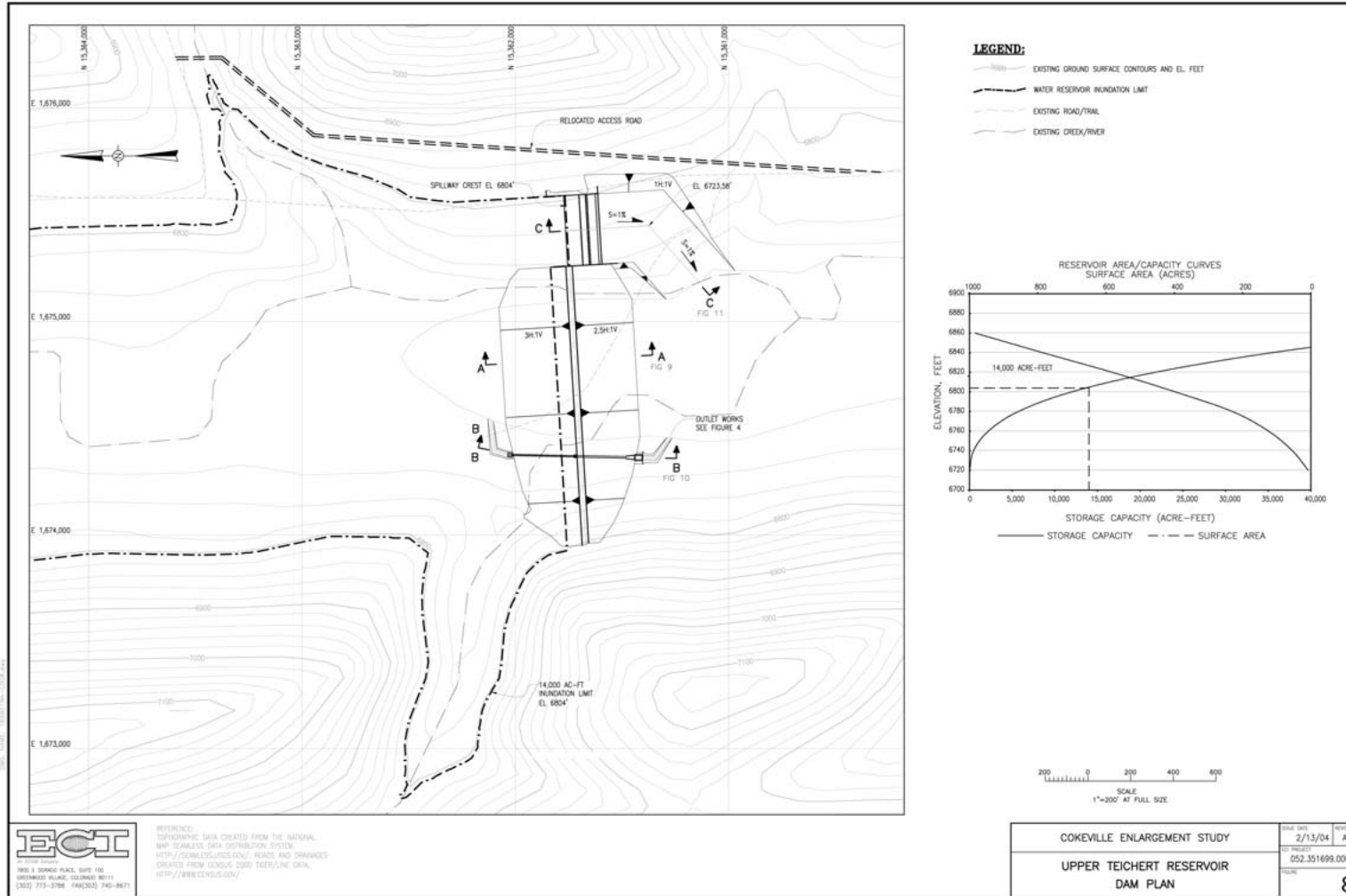


1800 E GRAND PLAINS, SUITE 100  
BETHUNEVILLE, COLORADO 80811  
(303) 773-3788 FAX (303) 740-8871

REFERENCE:  
TOPOGRAPHIC DATA CREATED FROM THE NATIONAL  
MAP FRAMEWORK DATA DISTRIBUTION SYSTEM  
[HTTP://WWW.NMFS.USGS.GOV/](http://www.nmfs.usgs.gov/), ROADS AND DRAINAGE'S  
CREATED FROM CENSUS 2000 TIGER/LINE DATA  
[HTTP://WWW.CENSUS.GOV/](http://www.census.gov/)

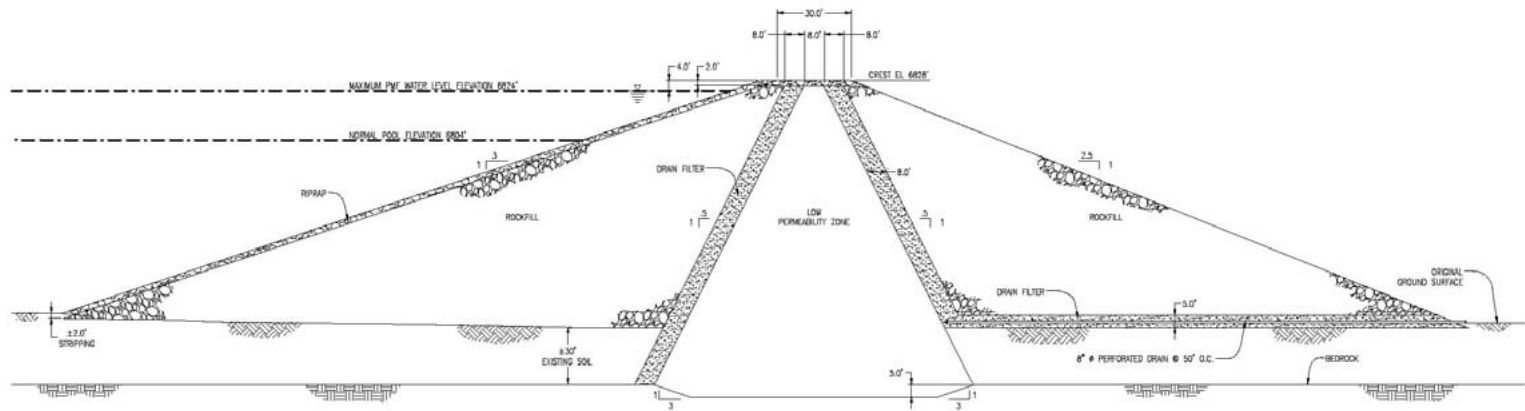
COKEVILLE ENLARGEMENT STUDY	DATE	2/13/04	REVISION	A
SMITHS FORK RESERVOIR DAM PLAN	PROJECT NO.	052.351699.0001	FIGURE	2

# UPPER TEICHERT/BAGLEY CONCEPTUAL LAYOUT





# TYPICAL DESIGN DETAILS EMBANKMENT CROSS SECTION



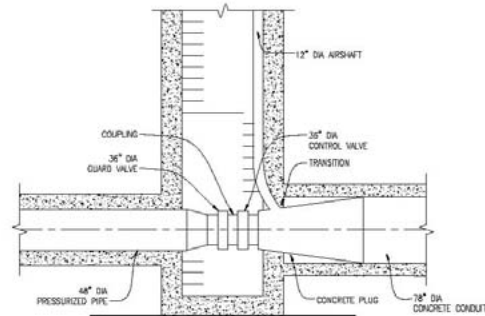
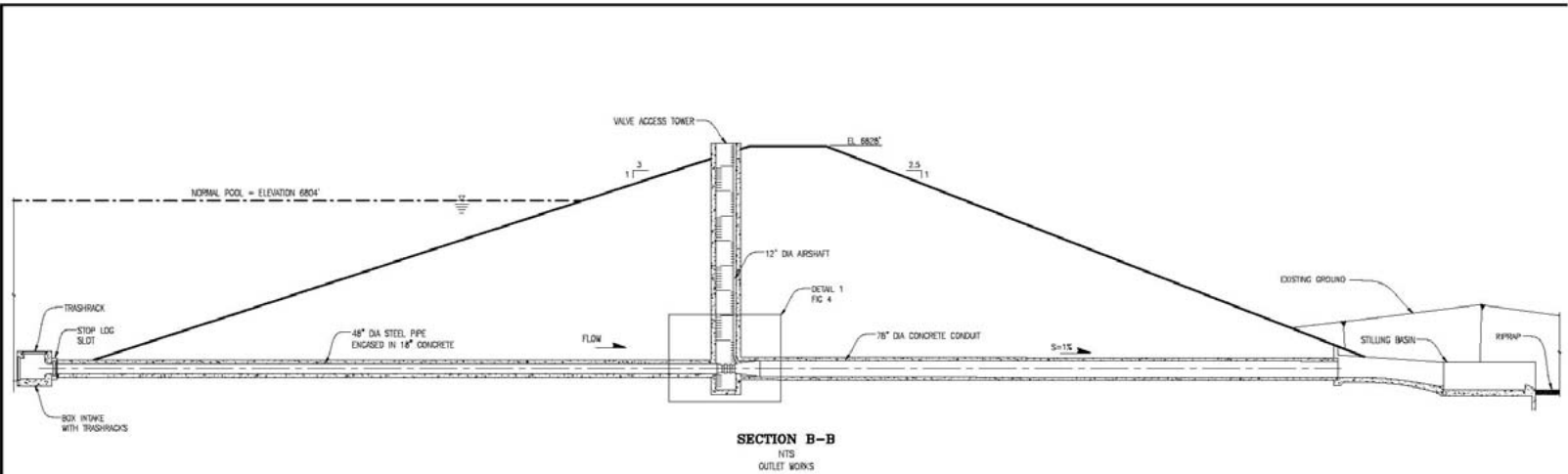
UPPER TEICHERT RESERVOIR  
NTS  
EMBANKMENT SECTION A-A

LAST MODIFIED: Feb 16, 2004 - 7:38am BY: USER, Seaboard  
 FILED: 20040216 11:51 AM  
 DATE: 2004 FEB 16 11:51 AM  
 CADD: 1181841700-00000000



COKEVILLE ENLARGEMENT STUDY	DATE: 2/13/04	REVISION: A
UPPER TEICHERT RESERVOIR	PROJECT: 052.351699.0001	
TYPICAL DAM CROSS SECTION	SHEET: 9	

# TYPICAL DESIGN DETAILS OUTLET WORKS



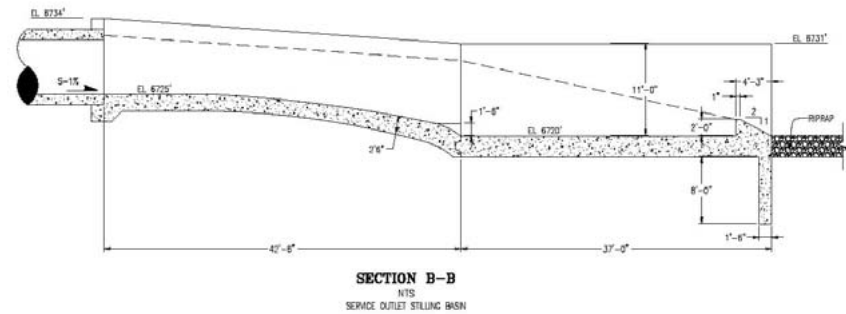
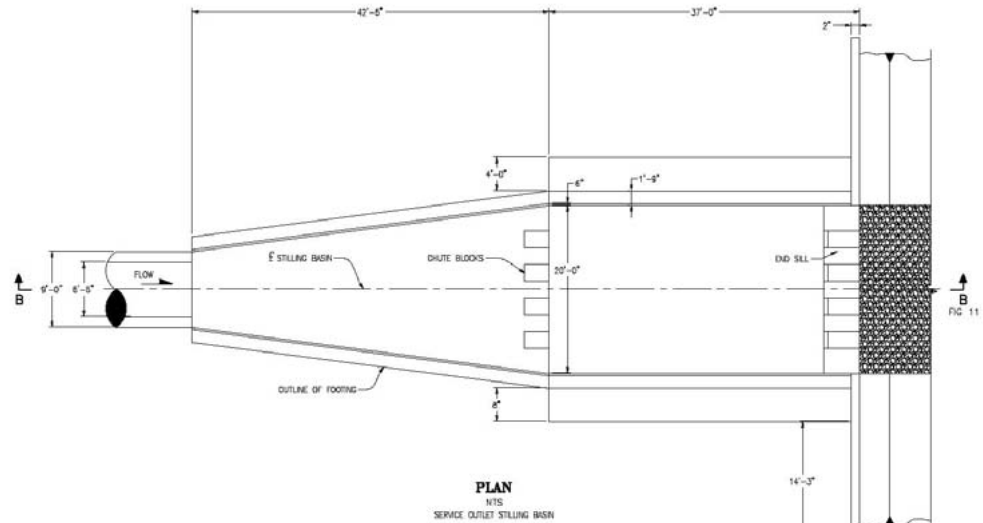
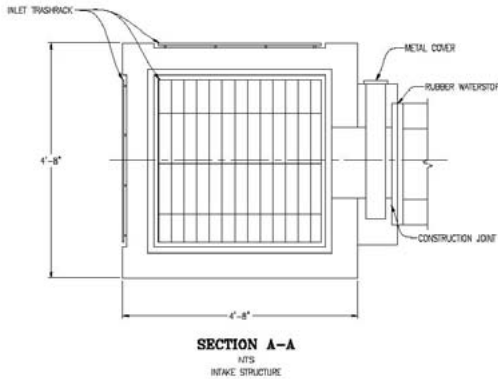
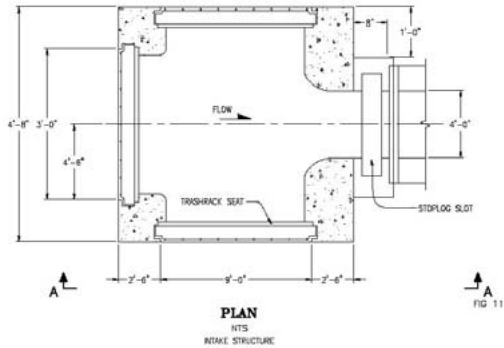
LAST MODIFIED: Feb. 16, 2004 - 7:38am By: USDB, Salsbad  
DWG. LOCATION: P:\PROJECTS\1899-Cokeville-2003\DWG\vent\outlet.dwg  
DWG. NAME: 1899-Cokeville-2003.dwg



COKEVILLE ENLARGEMENT STUDY		DATE: 2/13/04	REVISION: A
UPPER TEICHERT RESERVOIR OUTLET WORKS SECTION AND DETAIL		PROJECT: 052.351699.0001	
		FIGURE:	10



# TYPICAL DESIGN DETAILS OUTLET WORKS



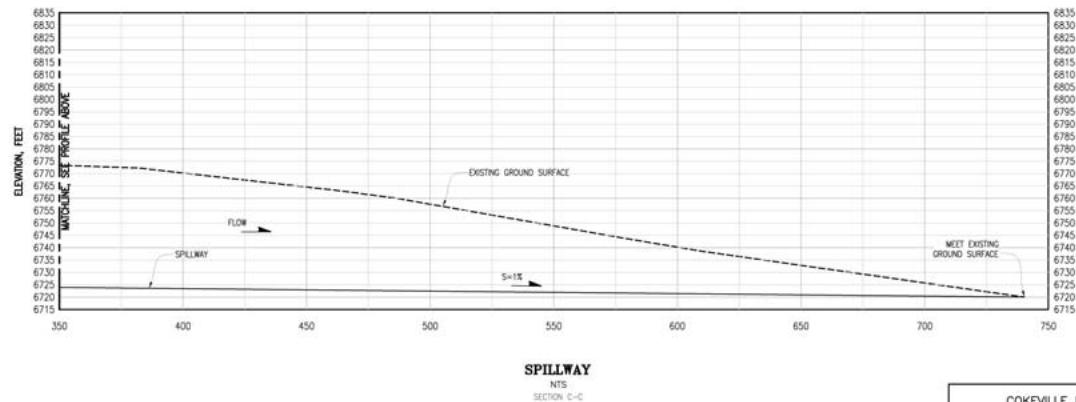
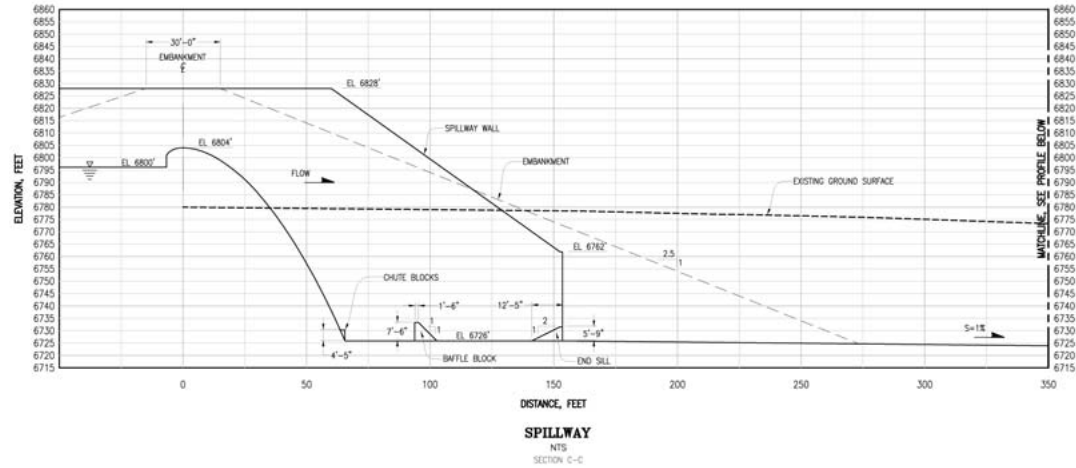
LAST MODIFIED: Feb 16, 2004 - 7:38am BY: USER: SrinivasD  
 DWG: UPPER TEICHERT RESERVOIR 2003 COU (with/without)  
 DWG: UPPER TEICHERT RESERVOIR 2003 COU (with/without)



COKEVILLE ENLARGEMENT STUDY	ISSUE DATE	2/13/04	REVISION
UPPER TEICHERT RESERVOIR	BY PROJECT	002_351999_0001	A
PLAN AND SECTIONS	FIGURE		11

# TYPICAL DESIGN DETAILS

## SPILLWAY



DATE: 02/13/04  
 DRAWN BY: J. L. BROWN  
 CHECKED BY: J. L. BROWN  
 PROJECT: COKEVILLE ENLARGEMENT STUDY  
 SHEET: 052.351699.0001



COKEVILLE ENLARGEMENT STUDY	DATE: 2/13/04	REVISION: A
UPPER TEICHERT RESERVOIR SPILLWAY SECTION	PROJECT: 052.351699.0001	



# ESTIMATED COSTS

## SMITHS FORK

<b>Embankment Cost</b>	<b>\$ 10,817,000</b>
<b>Spillway Cost</b>	<b>\$ 9,803,000</b>
<b>Outlet Works</b>	<b>\$ 1,192,000</b>
<b>Other Contractor Costs</b>	<b><u>\$ 6,908,000</u></b>
<b>SUBTOTAL</b>	<b>\$ 28,720,000</b>

<b>Construction Engineering</b>	<b>\$ 2,872,000</b>
<b>Construction Contingency</b>	<b>\$ 4,739,000</b>
<b>Plans and Specifications</b>	<b>\$ 2,906,000</b>
<b>Permitting &amp; Legal</b>	<b>\$ 2,542,000</b>
<b>Land Purchase/Easements</b>	<b>\$ 600,000</b>
<b>Environmental Mitigation</b>	<b>\$ 2,480,000</b>

**TOTAL PROJECT COST \$ 44,859,000**

# ESTIMATED COSTS

## UPPER TEICHERT/BAGLEY

Embankment Cost	\$ 11,110,000
Spillway Cost	\$ 6,562,000
Outlet Works	\$ 1,200,000
Other Contractor Costs	<u>\$ 6,078,000</u>
SUBTOTAL	\$ 24,950,000

Construction Engineering	\$ 2,495,000
Construction Contingency	\$ 4,117,000
Plans and Specifications	\$ 2,525,000
Permitting & Legal	\$ 2,210,000
Land Purchase/Easements	\$ 400,000
Environmental Mitigation	\$ 2,820,000

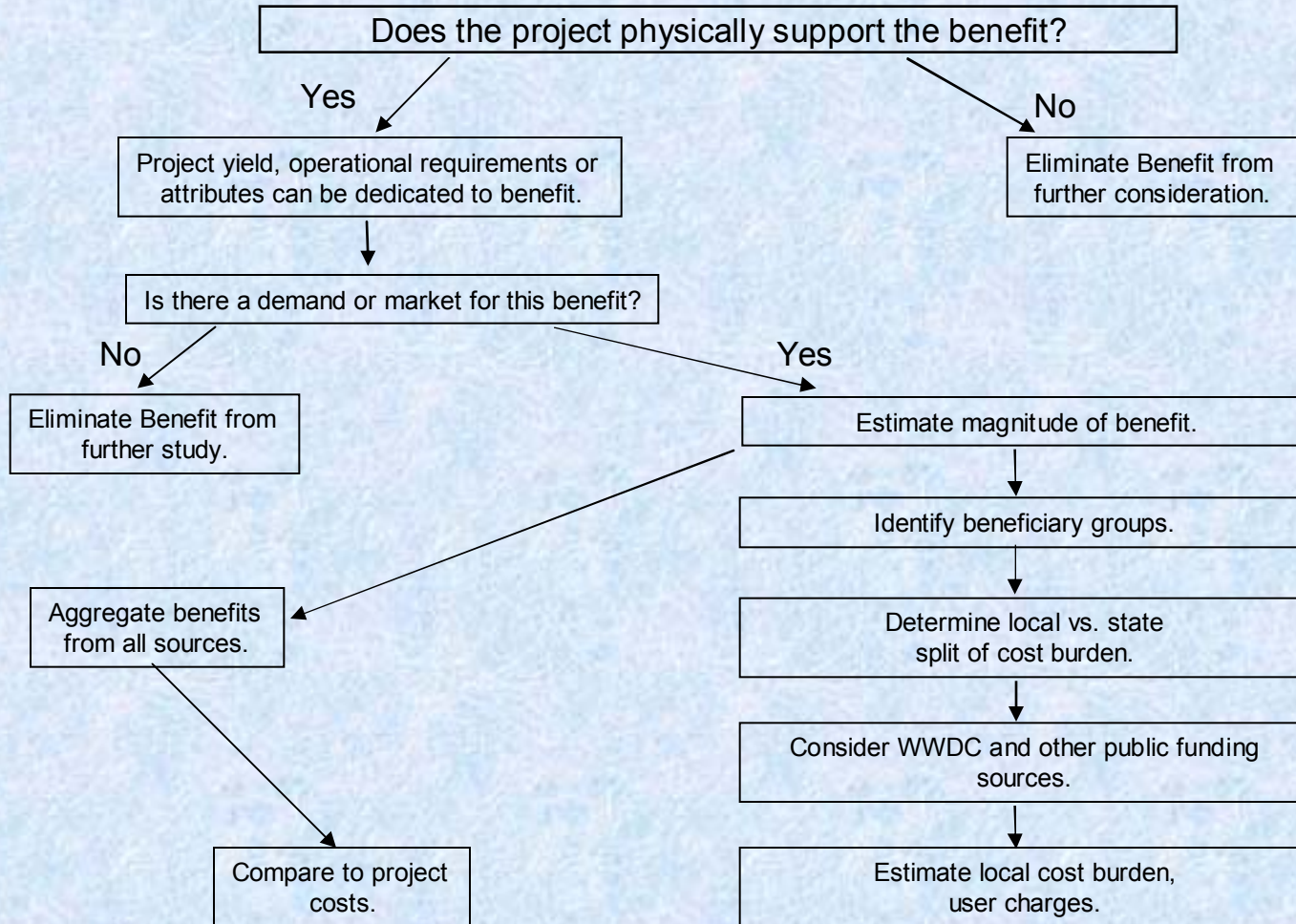
**TOTAL PROJECT COST \$ 39,517,000**



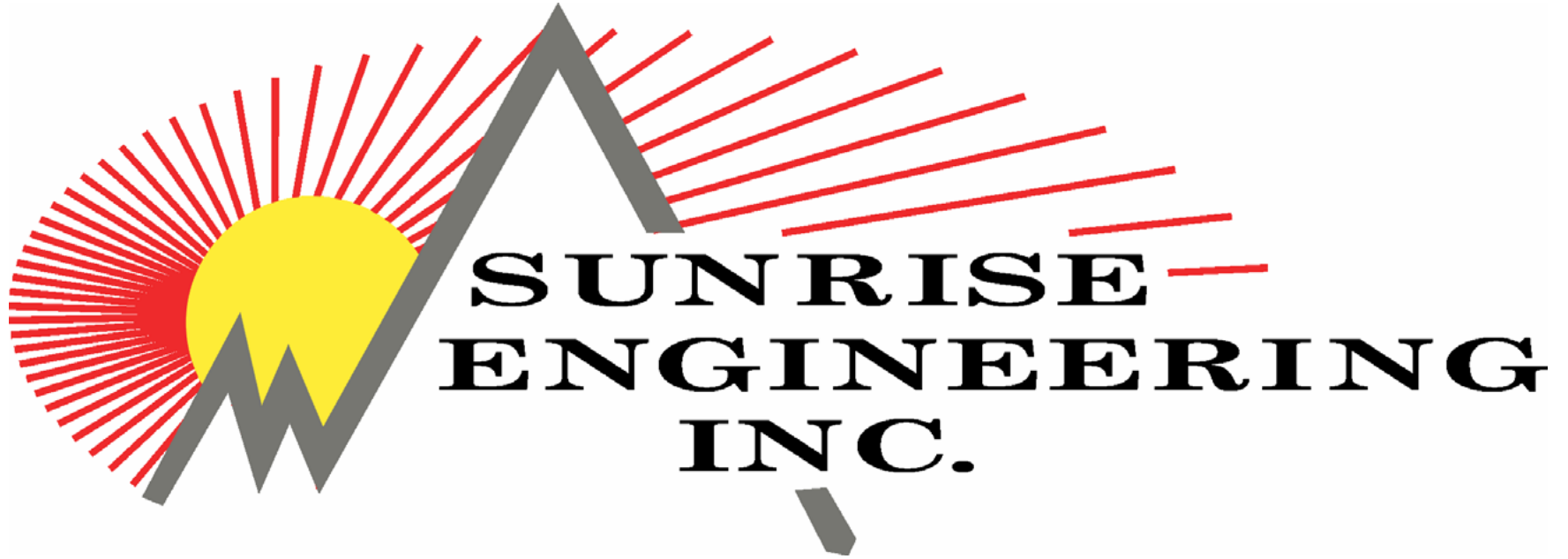
# **UPCOMING WORK**

- **Detailed Economic Analysis  
and Financing Plan**

# Cokeville Reservoir Economic Benefit Evaluation Model







**SUNRISE  
ENGINEERING  
INC.**